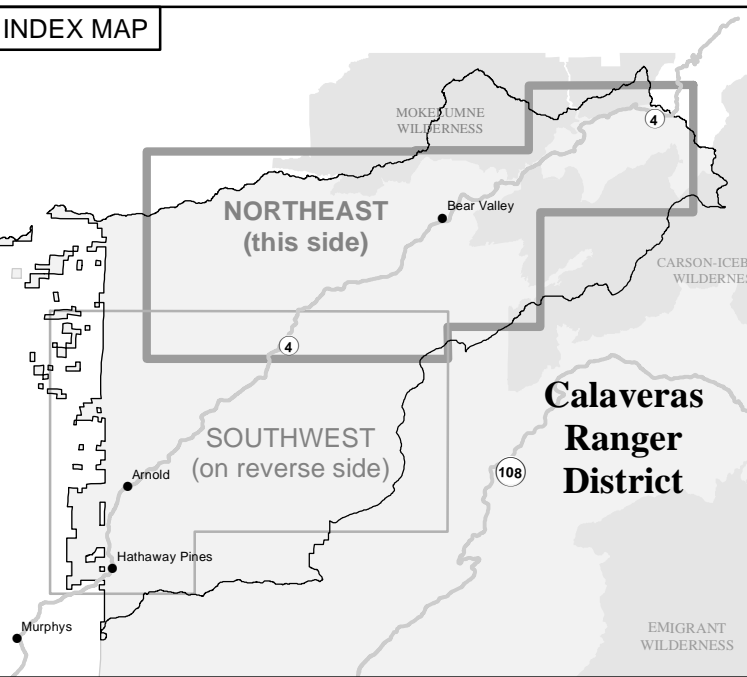


Motor Vehicle Use Map

Stanislaus National Forest

Calaveras Ranger District

California 2017
 Forest Service
 United States Department of Agriculture



INFORMATION SOURCES

Stanislaus National Forest Supervisor's Office
 19777 Greenley Road
 Sonoma, CA 95370
 Telephone (209) 532-3671

Summit Ranger District
 #1 Pincrest Lake Road
 Pincrest, CA 95364
 Telephone (209) 965-3434
 TDD: (209) 965-0488

Mi-Wuk Ranger District
 PO Box 100
 Mi-Wuk Village, CA 95346
 Telephone (209) 586-3234
 TDD: (209) 586-0262

Calaveras Ranger District
 PO Box 500
 Hathaway Pines, CA 95233
 Telephone (209) 795-1381
 TDD: (209) 795-2854

Groveland Ranger District
 24545 Highway 120
 Groveland, CA 95321
 Telephone (209) 962-7825
 TDD: (209) 962-6406

EXPLANATION OF LEGEND ITEMS

Roads Open to Highway Legal Vehicles Only:

These roads are open only to motor vehicles licensed under State law for general operation on all public roads within the State.

Roads Open to All Vehicles:

These roads are open to all motor vehicles, including smaller off-highway vehicles that may not be licensed for highway use (but not to oversize or overweight vehicles under State traffic law).

Trails Open to All Vehicles:

These trails are open to all motor vehicles, including both highway legal and nonhighway legal vehicles.

Trails Open to Vehicles 50" or Less in Width:

These trails are open only to motor vehicles less than 50 inches in width at the widest point on the vehicle.

Trails Open to Motorcycles Only:

These trails are open only to motorcycles. Sidecars are not permitted.

Special Vehicle Designation:

This symbol indicated the road or trail is open to classes of vehicles other than those listed above. (See Special Vehicle Designation Statement)

Seasonal Designation:

This symbol, used in conjunction with one of the other road or trail symbols, indicates that the road or trail is open only during April 15 through December 15.

Other Public Roads and Trails:

Highways, U.S., State
 Other Public Roads
 Other Public Trails

These symbols are used to show routes the Forest Service does not have jurisdiction over and has not designated for motorized use. These symbols are part of the reference layers showing connections to towns and cities outside the forest boundary.

Short Route Identifier:

This symbol is used for routes that are too short to show an actual symbol type on the map. The symbol contains the number of the road or trail. Users should refer to the corresponding number in the Short Route Table for designation information.

Motorized Trail Access:

This symbol indicates a trailhead for access to a motorized route. Not all motorized routes have trailheads and those that do may range from primitive to developed.

Special Vehicle Designation Statement

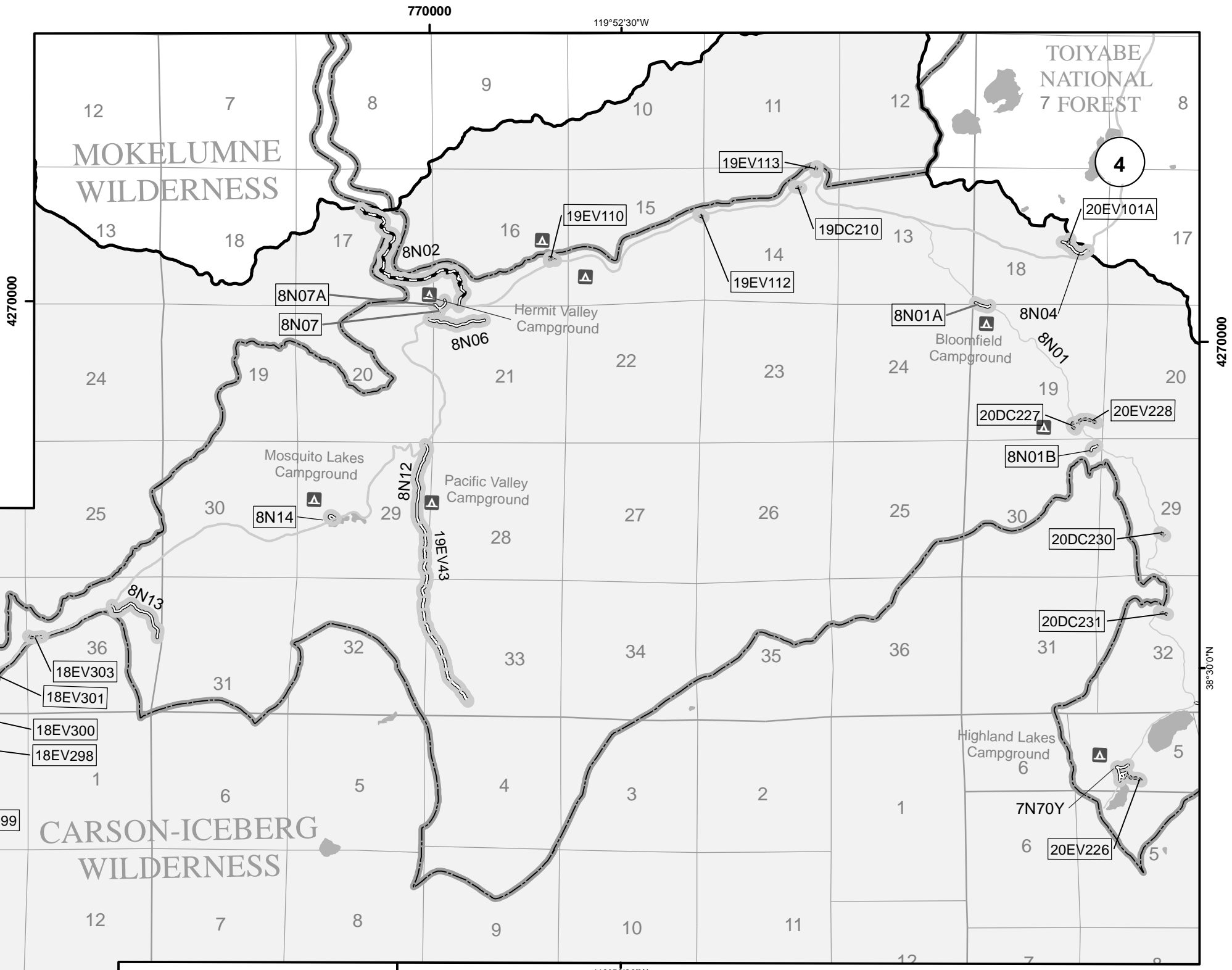
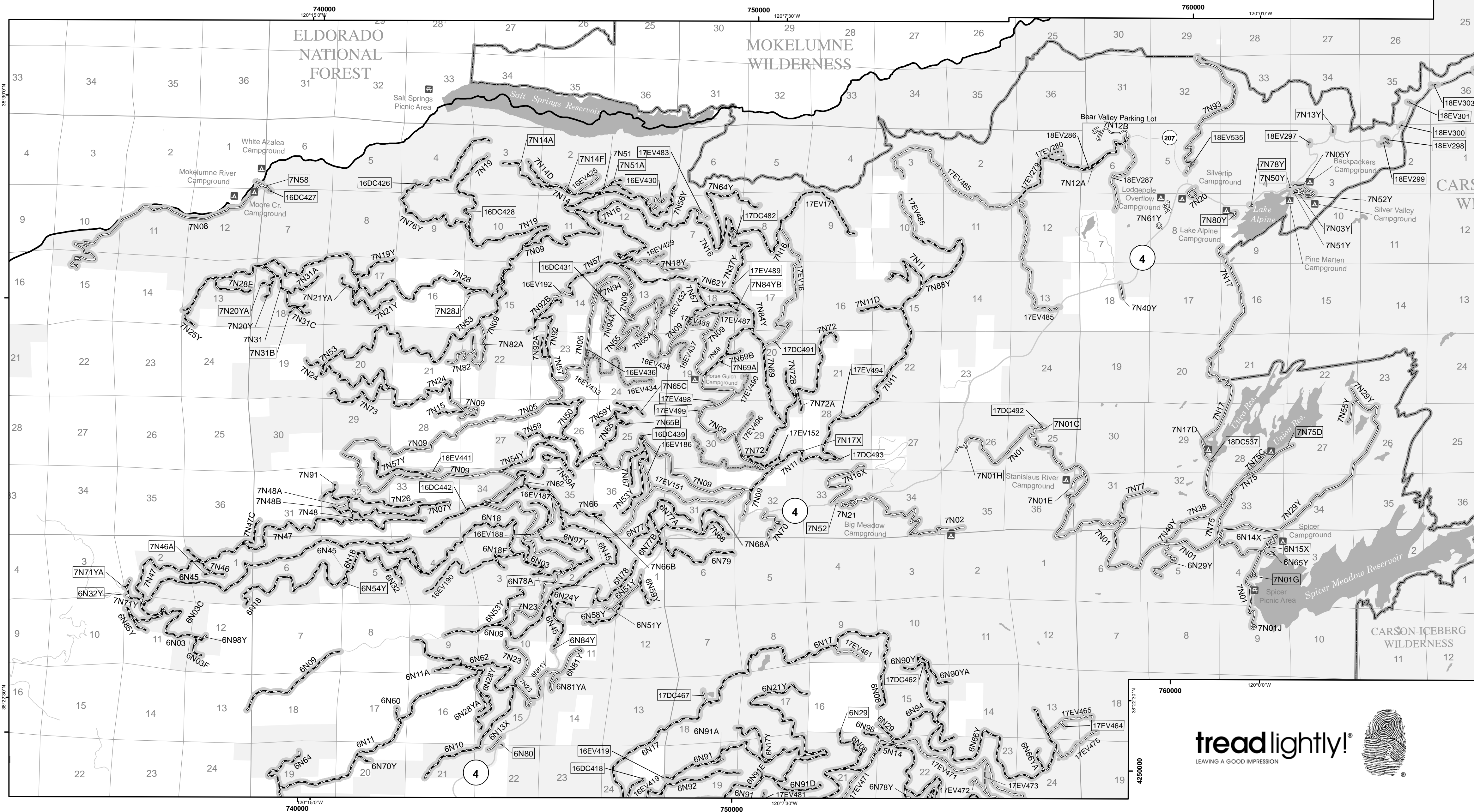
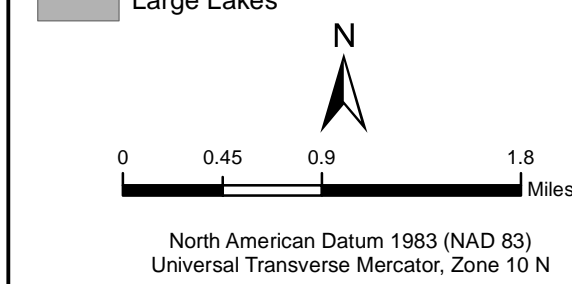
Special Vehicle Designation Routes are trails with the following vehicle designations: Open to All Highway Legal Vehicles, Open to Wheeled Non-Highway Legal Vehicles Wider Than 50 Inches.

Legend

- Roads Open to Highway Legal Vehicles
- Roads Open to All Vehicles
- Trails Open to All Vehicles
- Trails Open to Vehicles 50" or Less in Width
- Trails Open to Motorcycles Only
- Special Vehicle Designation
- Seasonal Designation (Open April 15 - Dec. 15)
- Highways, U.S., State
- Other Public Roads
- Short Route Identifier

- ▲ FS Campground
- ▲ Picnic Area
- ▲ Motorized Trailhead
- ▲ Information Site

- ▭ Forest or Unit Boundary
- ▭ National Forest System Lands
- ▭ Non-National Forest System Lands within the National Forest
- ▭ Wilderness Areas
- ▭ Township and Range Lines
- ▭ Section Lines
- ▭ Large Lakes



Short Routes						
Open to All Vehicles, April 15 - Dec. 15						
16DC442	17DC474	17EV307	17EV464	17EV483	17EV489	
17EV494	19DC192	19DC193	19DC194	19EV195	19EV196	
20DC221						
Open to All Vehicles, April 15 - Dec. 15						
17DC484						
Trails						
Open to Highway Legal Vehicles, April 15 - Dec. 15						
Open to Wheeled Vehicles Wider than 50 inches, April 15 - Dec. 15						
15DC113	16DC418	16DC426	16DC427	16DC428	16DC431	
16DC439	16EV436	17DC462	17DC463	17DC467	17DC470	
17DC482	17DC491	17DC492	17DC493	17EV481	17EV488	
17EV498	17EV499	18DC537	18EV292	18EV293	18EV295A	
18EV297	18EV298	18EV299	18EV300	18EV301	18EV303	
18EV535	19DC210	19EV110	19EV111A	19EV112	19EV113	
20DC227	20DC230	20DC231	20EV101A	20EV226	20EV228	
Open to All Vehicles, April 15 - Dec. 15						
6N17Q	6N29	6N76B	6N78A	6N80	6N84Y	
6N91C	7N14A	7N14F	7N20YA	7N28J	7N31B	
7N46A	7N51A	7N65B	7N65C	7N66B	7N69A	
7N71YA	7N84YB					
Open to Highway Legal Vehicles, Year-round						
7N01H						
Open to Highway Legal Vehicles, April 15 - Dec. 15						
6N06B	6N06F	6N06G	6N11X	6N15X	7N01C	
7N01G	7N03Y	7N12YA	7N12YB	7N12YC	7N13A	
7N13Y	7N40Y	7N50Y	7N52	7N75D	7N78Y	
8N01A	8N01B	8N07	8N07A	8N14		
Wheeled-Over-Snow Routes						
Open to Wheeled ATV's When Snow Depth Exceeds 12 inches						
7N05	7N09	7N23				

