



Apalachicola National Forest

Munson Hills Mountain Bike Trail System

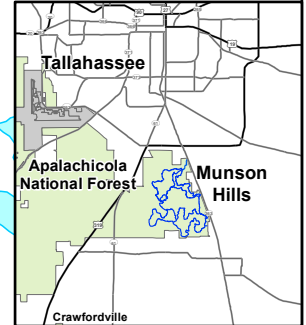


	T	A	B	C	D	E	F	G	H	I	J	T2
T		0.5	1.5	2.1	2.5	2.8	3.5	3.8	3.1	3.9	4.3	4.4
A	0.5		1	1.6	2	2.3	3	3.3	2.6	3.4	3.8	3.9
B	1.5	1		0.6	1	1.3	2	2.3	1.6	2.4	2.8	2.9
C	2.1	1.6	0.6		0.4	1.9	2.6	1.7	1	1.8	3.4	3.5
D	2.5	2	1	0.4		2.3	3	1.3	0.6	1.4	3.8	3.9
E	2.8	2.3	1.3	1.9	2.3		0.7	2.8	2.9	2.9	1.5	1.6
F	3.5	3	2	2.6	3	0.7		2.1	2.8	2.2	0.8	0.9
G	3.8	3.3	2.3	1.7	1.3	2.8	2.1		0.7	0.1	2.9	3
H	3.1	2.6	1.6	1	0.6	2.9	2.8	0.7		0.8	3.6	3.7
I	3.9	3.4	2.4	1.8	1.4	2.9	2.2	0.1	0.8		3	3.1
J	4.3	3.8	2.8	3.4	3.8	1.5	0.8	2.9	3.6	3		0.1
T2	4.4	3.9	2.9	3.5	3.9	1.6	0.9	3	3.7	3.1	0.1	

Trail Miles Between Points

Trail Name	Mileage
Paper Cup	0.5
Munson Hills West Loop	3.9
Munson Hills East Loop	3.7
Tall Pine	1.0
Luge	0.4
West Connector	0.6
East Connector	0.7
Twilight West	3.3
Twilight East	6.0
Hall Park Entrance	0.1
Gun Range	0.1

*Blue trails marked with blue blazes & White trails marked with white blazes.



Apalachicola National Forest

This product is reproduced from geospatial information prepared by the U.S. Department of Agriculture, Forest Service. GIS data and product accuracy may vary. They may be developed from sources of differing accuracy, accurate only at certain scales, based on modeling or interpretation, incomplete while being created or revised, etc. Using GIS products for purposes other than those for which they were created may yield inaccurate or misleading results. The Forest Service reserves the right to correct, update, modify, or replace GIS products without notification.

For more information, contact:
Apalachicola National Forest
57 Taff Drive,
Crawfordville, FL 32327
(850) 926-3561

