

Shield Project Recreational Closure Information

Updated October 30th, 2018

CLOSED SITES:

- East Lake Campground
- Cinder Hill Campground
- Cinder Hill Boat Launches - North & South
- Cinder Hill Trailhead
- Section of Newberry Crater Trail #3958 (and connector to trailhead)
- Newberry Group Camp
- East Lake RV Park
- Paulina Lake Campground
- Chief Paulina Horse Camp

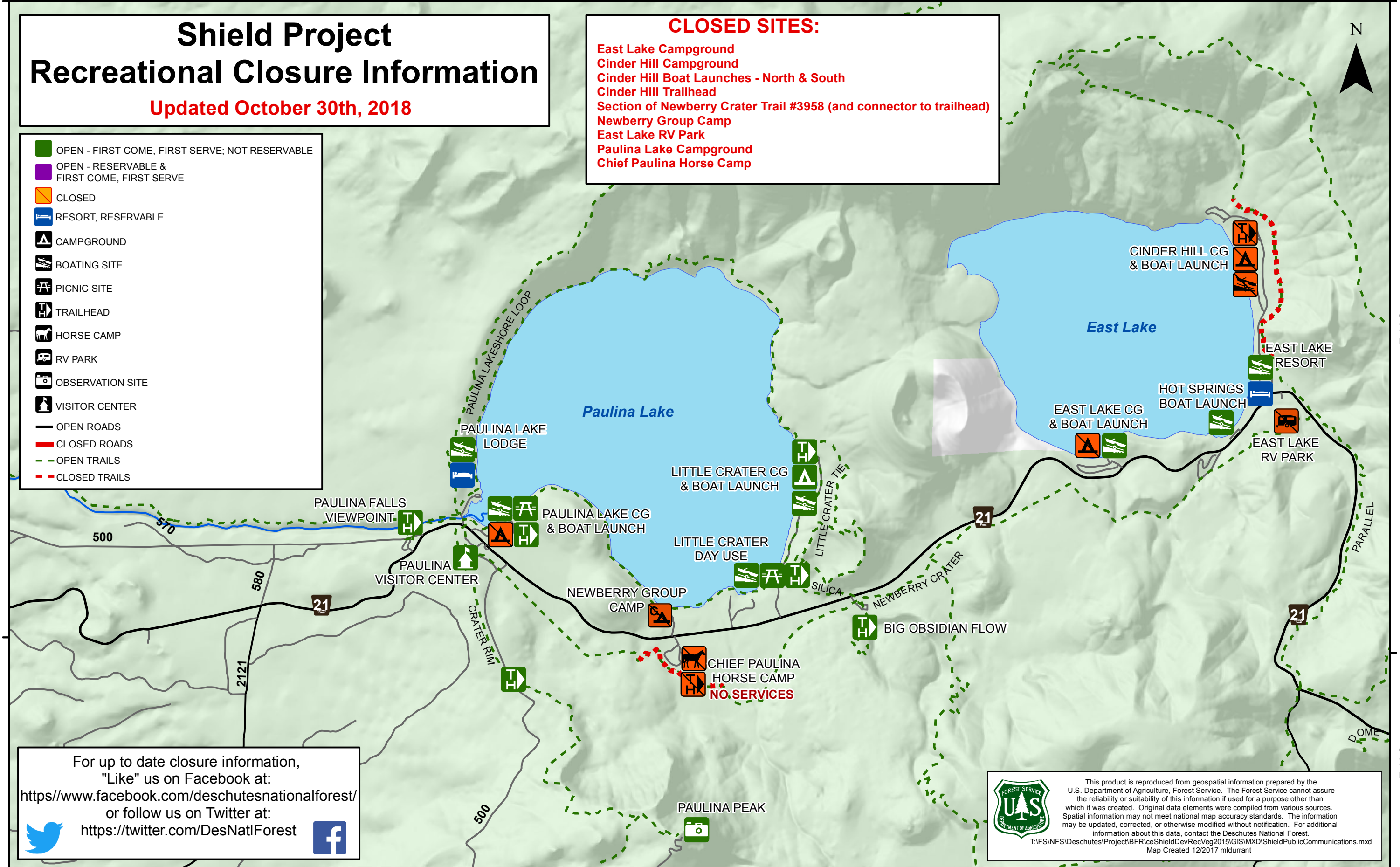
- OPEN - FIRST COME, FIRST SERVE; NOT RESERVABLE
- OPEN - RESERVABLE & FIRST COME, FIRST SERVE
- CLOSED
- RESORT, RESERVABLE
- CAMPGROUND
- BOATING SITE
- PICNIC SITE
- TRAILHEAD
- HORSE CAMP
- RV PARK
- OBSERVATION SITE
- VISITOR CENTER
- OPEN ROADS
- CLOSED ROADS
- OPEN TRAILS
- CLOSED TRAILS

T. 21 S.

T. 21 S.


T. 22 S.

T. 22 S.



For up to date closure information,
"Like" us on Facebook at:
<https://www.facebook.com/deschutesnationalforest/>
or follow us on Twitter at:
<https://twitter.com/DesNatlForest>





This product is reproduced from geospatial information prepared by the U.S. Department of Agriculture, Forest Service. The Forest Service cannot assure the reliability or suitability of this information if used for a purpose other than which it was created. Original data elements were compiled from various sources. Spatial information may not meet national map accuracy standards. The information may be updated, corrected, or otherwise modified without notification. For additional information about this data, contact the Deschutes National Forest.

T:\FS\NFS\Deschutes\Project\BFR\IceShieldDevRecVeg2015\GIS\MXD\ShieldPublicCommunications.mxd
Map Created 12/2017 midurrant

