

Western Redcedar

Thuja plicata

SIZE AT

AGE 250:

100-160 feet tall
2-8 feet in diameter

LIFE SPAN:

1,000+ years

LEAVES:

Small, overlapping scale-like leaves that form sprays, in opposite pattern, shiny dark-green in color. 1/16-1/8" long.

CONES:

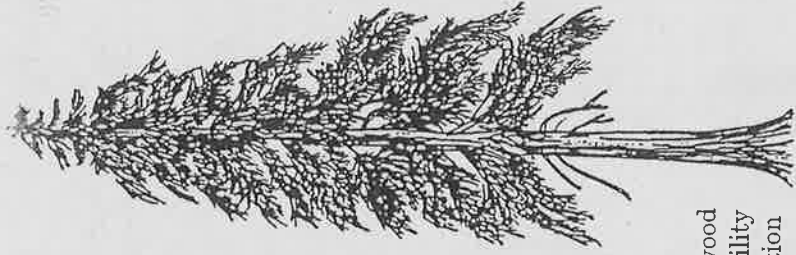
3/4" long. Brown.

BARK:

Cinnamon-red on young stems, gray on old trunks. Fibrous and shredding.

THINGS TO KNOW:

Wood is very resistant to rot. The chief wood used for roofing shingles. For paneling, utility poles. Also valuable for outdoor construction and boat building. Indians used for totem poles and canoes. Its bark was woven into baskets, nets, and fabric for clothing. Its a member of the cypress family, so not a true cedar.

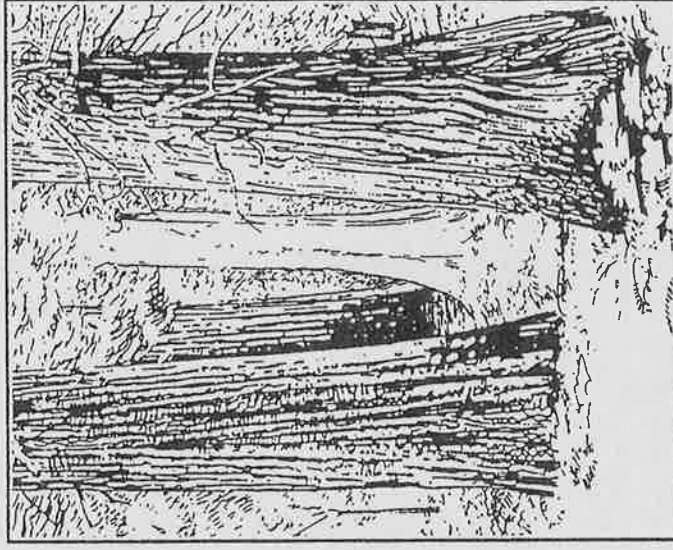


FOREST SERVICE
Northern Region
Idaho Panhandle
National Forests



Self-Guided Nature Trail

HOBO Cedar Grove Botanical Area



St. Joe Ranger District
P.O. Box 407
St. Maries, Idaho ~ 83861
(208) 245-2531

R1-05-34

The United States Department of Agriculture (USDA) prohibits discrimination in its programs on the basis of race, color, national origin, sex, religion, age, disability, political beliefs, and marital or familial status. (Not all prohibited bases apply to all programs.) Persons with disabilities who require alternative means of communication of program information (braille, large print, audiotape, etc.) should contact USDA's TARGET Center at (202) 720-2600 (voice and TDD).

To file a complaint, write the Secretary of Agriculture, U.S. Department of Agriculture, Washington, DC 20250, or call 1-800-245-6340 (voice) or 202-720-1127 (TDD). USDA is an equal employment opportunity employer.

St. Joe Ranger District

NARRATIVE - HOBBO CEDAR GROVE NATURE TRAIL 255

The 1/2-mile Nature Trail has a very gentle gradient (plus or minus 8 percent slope), making it accessible to older persons or those with moderate handicaps. Trail width is approximately 40 inches.

The trail begins at the parking lot. About 60 feet (18 m.) into the grove is a registration box which holds brochures for the self-guided nature trail. The numbered paragraphs in the brochure coincide with the numbered signposts along the trail.

Within the grove, huge cedar columns rise out of a dense mat of lady fern. The closed canopy allows only an occasional ray of light to filter through when the sun is high on clear, sunny days. Sweet, cool, and moist, the air is as fresh as a rainshower on a summer day. A small stream tumbles toward the West Fork of Hobo Creek. An occasional log bench provides seating along the trail, which loops through the grove and returns to the parking lot.

NARRATIVE - BIG LOOP TRAIL

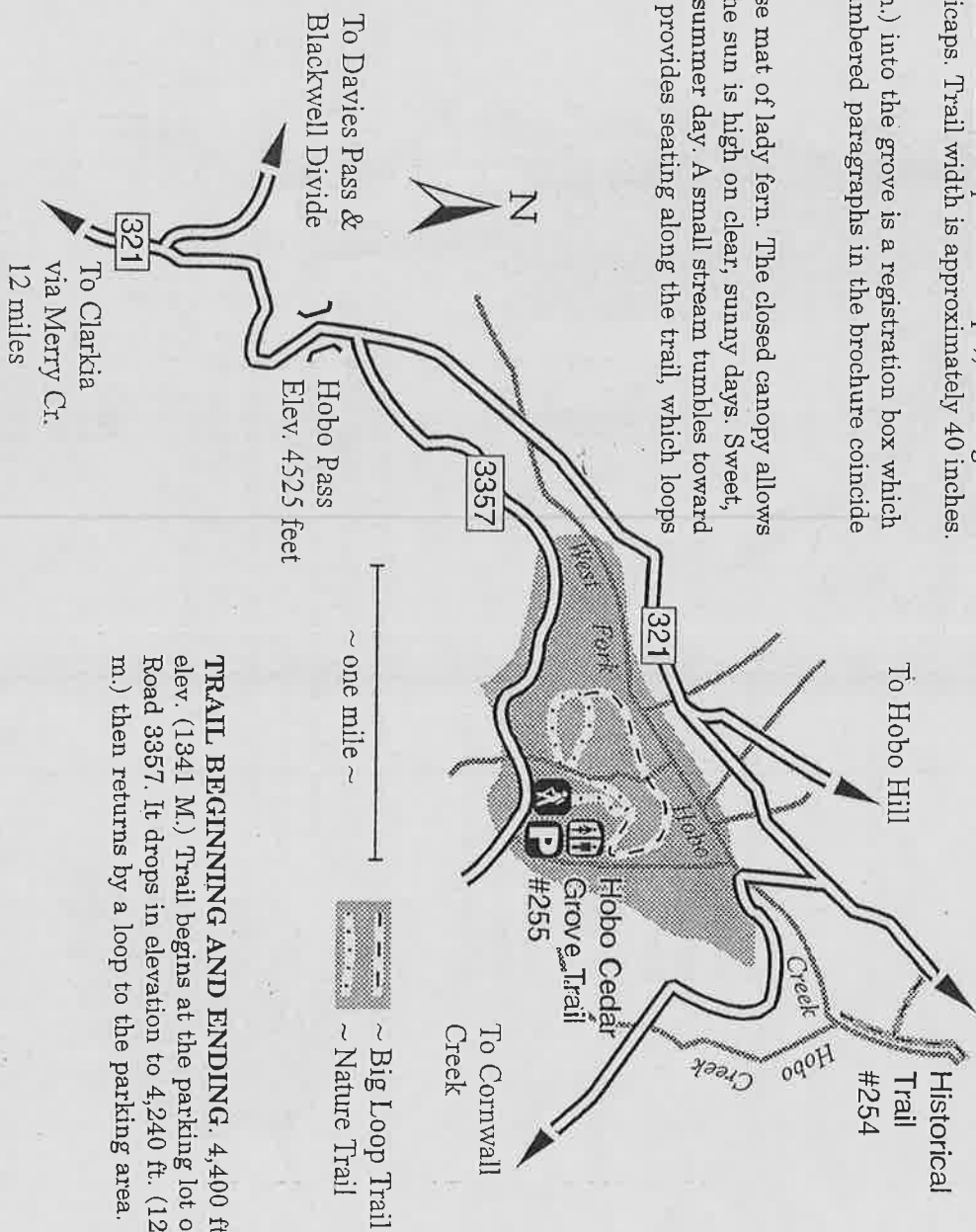
An additional 1 mile of hiking trail allows you to further explore the giant cedars. The Big Loop Trail is approximately 24 inches wide and has some short, moderate pitches of 12-15 percent slope.

The Big Loop leaves the Nature Trail just beyond signpost No. 6. It meanders through the grove, crossing three small streams, and joins the self-guided Nature Trail by a corduroy "boardwalk" near Signpost No. 16. Return to the parking lot by the Nature Trail.

ACCESS NO. 1. From St. Maries, Idaho, follow State Highway 3 southeast 30 miles to Clarkia. Follow Clarkia-Marble Creek Road 321 for 10 miles (26 km.) in a northeasterly direction to the intersection with Road 3357 at Hobo Pass. Turn right and travel east on Forest Road 3357 for 2 miles (3 km.) to the parking lot.

ACCESS NO. 2. From St. Maries, Idaho, follow Forest Highway 50 (St. Joe River Road) east for 35 miles (56 km.) to Clarkia-Marble Creek Road 321. Turn right and travel in a southwesterly direction for 20 miles (32 km.). At Hobo Pass turn left on Forest Road 3357 and travel east for 2 miles (3 km.) to the parking lot.

To St. Joe River - 22 miles,
St. Maries - 61 miles



TRAIL BEGINNING AND ENDING. 4,400 ft. elev. (1341 M.) Trail begins at the parking lot on Road 3357. It drops in elevation to 4,240 ft. (1292 m.) then returns by a loop to the parking area.

ATTRACTIONS AND CONSIDERATIONS.

The 240-acre grove is dominated by a dense canopy of large western red cedar, with a carpet of lady fern. The 1/2-mile loop trail has numbered stations, with a brochure describing the plant and animal life of the area. The trail is accessible to the moderately handicapped. There is a picnic area (six sites) with fireings next to the parking area. On site accessible toilet. The trail is closed to all motorized vehicles. The trailhead for the Hobo Historical Trail 254 is 2 miles (3 km.) north of the grove on Road 321.