

Designated areas: campfires are allowed in permanent Forest Service provided fire structures in the following areas on the Payette National Forest.

Krassel RD:

Big Creek Campground
Ponderosa Campground
Buckhorn Bar Campground, all loops
Secesh Campground
Camp Creek Campground
Four Mile Campground
Poverty Campground
Old East Fork Road Campsites
Deadman Campsites
Split Creek/Cow Creek Campsites
Indian Point Campsites
Lick Creek Trailhead
Reed Ranch Campsites

McCall RD:

Kennally Creek Campground
Paddy Flat Campground
Upper Payette Lake Campground
Burgdorf Campground
Chinook Campground
Lake Fork Campground
Ruby Meadow Campsite (3 sites)
Pete Creek/Three Mile Trailhead (9 sites)
Jeanette Campground
Lake Fork Cabin
Paddy Flat Cabin
California Lake

Council RD:

Cabin Creek Campground
Big Flat Campground
Evergreen Campground
Lafferty Campground
Hornet Picnic Area
Huckleberry Campground
Sheep Rock Recreation Site

Weiser RD:

Buck Park Cabin
Brownlee Campground
Justrite Campground
Kiwanis Campground
Paradise Campground
Spring Creek Campground

New Meadows RD:

Goose Lake Campsites (3 sites)
Granite Lake Campsite
Yantis Ditch (2 sites)
Smokey Boulder Road Campsites (13 sites)
Hazard Lakes Campground
Grouse Campground
Last Chance Campground
Cold Springs Campground
Hard Creek Horse Camp
Lost Valley Reservoir (7 sites)
Lower Lost Valley (7 sites)

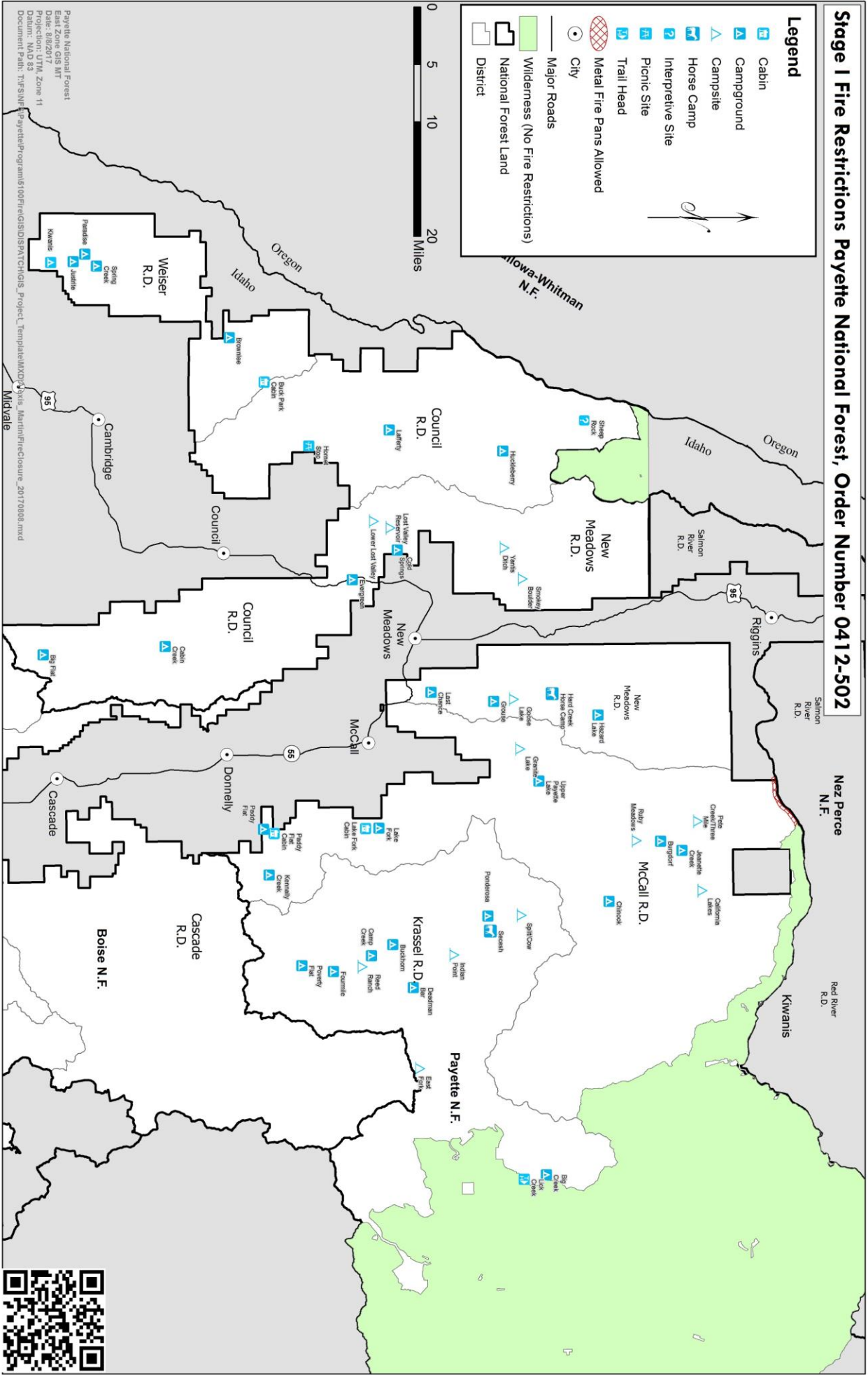
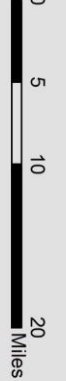
Campfires are prohibited in all other locations on the Payette National Forest except as otherwise noted above.

The map on the following page shows these sites listed above.

Stage I Fire Restrictions Payette National Forest, Order Number 0412-502

Legend

- Cabin
- Campground
- Campsite
- Horse Camp
- Interpretive Site
- Picnic Site
- Trail Head
- Metal Fire Pans Allowed
- City
- Major Roads
- Wilderness (No Fire Restrictions)
- National Forest Land
- District



Payette National Forest
 East Zone, GIS MTF
 Date: 3/8/2017
 Projection: UTM, Zone 11
 Datum: NAD 83
 Document Path: \\SR\SWF-Payette\Programs\100\Fire\GIS\Dist\CHGIS_Project_Template\MXD\Vis_Marsh\FireClosure_2017\0808.mxd

Midvale



