

Forest Order No. 05-15-51-17-21
Sierra National Forest
Railroad Fire Closure

Pursuant to 16 USC 551 and 36 CFR 261.50(a) and (b), and to provide for public safety, the following acts are prohibited within the Sierra National Forest. This Order is effective from September 19, 2017, until the Railroad Fire is declared out.

1. Going into or being upon National Forest System lands within the Railroad Fire Closure Area. The boundary of the Railroad Fire Closure Area begins at the intersection of Highway 41 and the northern edge of MPA126 (Miami Mtn Road), then it continues south along Highway 41 to its intersection with the northern edge of County Road 632(Sky Ranch Road), then it continues northeast along the northern edge of County Road 632 (Sky Ranch Road) to its intersection with the southern edge of Forest Road No. 6S90, then it continues northwest along the southern edge of Forest Road No. 6S90 to its intersection with California Creek, then it continues north along California Creek to its intersection with the northern edge of Forest Road No. 5S38, then it continues east along the northern edge of Forest Road No. 5S38 to its intersection with the northern edge of Forest Road No. 6S10, then it continues northeast along the northwestern edge of Forest Road No. 6S10 to its intersection with the western edge of Forest Road No. 5S06, then it continues north along the western edge of Forest Road No. 5S06 to its intersection with Rainer Creek, then it continues west along Rainer Creek to its intersection with Forest Road No. 6S07, then it continues west along the northern edge of Forest Road No. 6S07 to its intersection with Highway 41, then it continues north along Highway 41 its intersection with the southern edge of Forest Road No. 5S09, then it continues west along the southern edge of Forest Road No. 5S09 to its intersection with the southern edge of MPA17 (Summit Rd), then it continues west along the southern edge of MPA17 (Summit Rd) to its intersection with a tributary of Big Creek, then it continues south along the Big Creek tributary to its intersection with Miami Creek, then it continues south along Miami Creek to its intersection with the western edge of MPA126 (Miami Mtn Road.), then it continues south along the western edge of MPA126 (Miami Mtn Road.) to its intersection with Forest Road No. 6S14, then it continues south along the western edge of Forest Road No. 6S14 to its intersection with the southern edge of Forest Road No. 6S24, then it continues east along the southern edge of Forest Road No. 6S24 to its intersection with Forest Road No. 6S17, then it continues north along the eastern edge of Forest Road No. 6S24 back to its starting point, as shown on the attached map. 36 CFR 261.52(e).
2. Being on any National Forest System road within the Railroad Fire Closure Area, except Forest Road No. 6S97 beginning at County Road 632 (Sky Ranch Road), then continuing north to its terminus at Calvin Crest and Forest Road No. 6S58X

beginning at County Road 632 (Sky Ranch Road), then continuing north to its terminus at Paradise Springs, as shown on the attached map. 36 CFR 261.54(e).

3. Being on any National Forest System trail within the Railroad Fire Closure Area, as shown on the attached map. 36 CFR 261.55(a).

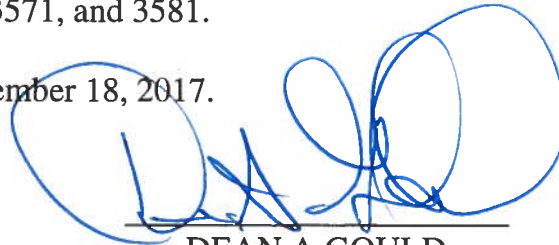
Pursuant to 36 CFR 261.50(e), the following persons are exempt from this Order:

1. Persons with a permit from the Forest Service specifically authorizing the otherwise prohibited act or omission.
2. Any Federal, State, or local officer or member of an organized rescue or fire fighting force in the performance of an official duty.

These prohibitions are in addition to the general prohibitions contained in 36 CFR Part 261, Subpart A.

A violation of these prohibitions is punishable by a fine of not more than \$5,000 for an individual or \$10,000 for an organization, or imprisonment for not more than six months, or both. 16 USC 551 and 18 USC 3559, 3571, and 3581.

Executed in Clovis, California on September 18, 2017.



DEAN A GOULD
Forest Supervisor

This Order supersedes Order No. 05-15-00-17-20, dated September 11, 2017.

File Code: 2670

Date: September 18, 2017

Route To: File

Subject: Forest Order No. 05-15-51-17-21 – Railroad Fire Closure

From: Dean A Gould, Forest Supervisor 

This document explains my rationale and the regulatory basis for implementing an Order closing the area, roads, and trails in the vicinity of the Railroad Fire on the Sierra National Forest.

On the afternoon of August 29, 2017, a fire began near Highway 41 and the Sugar Pine Railroad on the Bass Lake Ranger District. By September 4, 2017, the Railroad Fire had grown from its original size to over 9,790 acres and is 23% contained. As of September 15, 2017 the fire is 100% contained and totals approximately 12,407 acres.

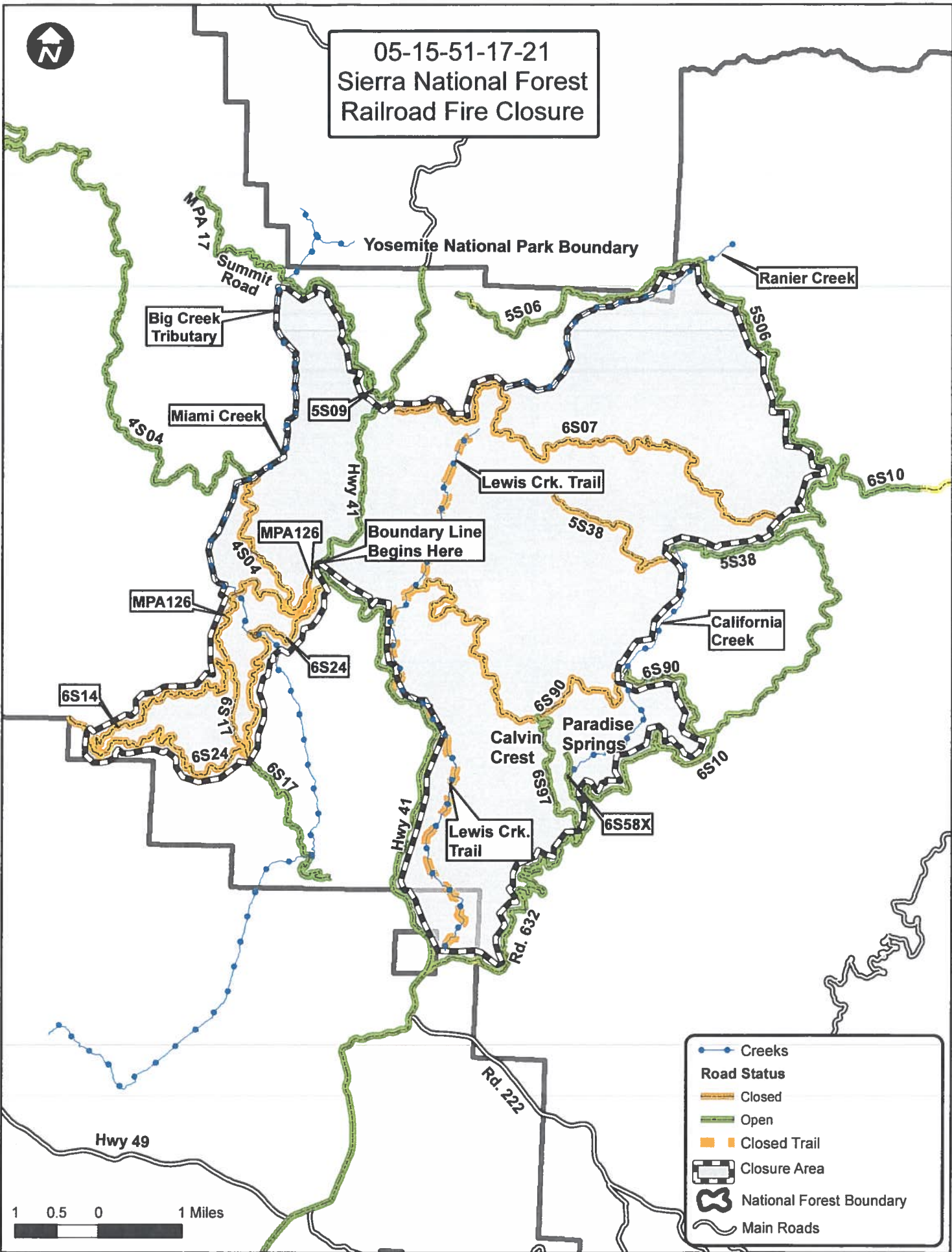
The purpose of this closure is to provide safety for the public and for the firefighters who are engaged in fire suppression and rehab efforts within the Railroad Fire Closure Area, shown on the attached map. This restriction is necessary for the purposes of ensuring public safety until the wildfire can be managed to protect the public. Closure of the fire area is necessary to help ensure that no one is injured within or near the active fire perimeter. Except for Forest Road No 6S97 and Forest Road No. 6S58X all National Forest System roads and trails, within the active fire perimeter will be closed due to fire suppression and rehab activities that create a hazard to the public which includes the falling of hazard trees that were weakened by the fire and the construction, rehab and maintenance of fuel breaks. Forest Road No.'s 6S97 and 6S58X have been mitigated of the hazards noted above and will be open to public use. This closure will remain in effect until the fire is declared out.

Scoping regarding this temporary area and road closure involved discussions with cooperators including the incident management team who had no objections. I have concluded that this decision may be categorically excluded from documentation in an Environmental Impact Statement (EIS) or Environmental Assessment (EA) under the National Environmental Policy Act. This action falls within the category identified in 36 CFR 220.6(d)(1) - prohibitions to provide short-term resource protection or to protect public health and safety - and does not require documentation in a decision memo, decision notice, or record of decision. I have determined that there are no extraordinary circumstances associated with this temporary closure. Implementation of the decision may begin immediately.





05-15-51-17-21
Sierra National Forest
Railroad Fire Closure



05-15-51-17-21

Sierra National Forest
Railroad Fire Closure

Yosemite National Park Boundary

MPA 17

Summit Road

Ranier Creek

Big Creek
Tributary

5S06

Miami Creek

5S09

6S07

4S04

Hwy 41

Lewis Crk. Trail

6S10

MPA126

Boundary Line
Begins Here

5S38

California
Creek

MPA126

6S24

6S14

Calvin
Crest

6S90

6S90

6S10

Hwy 41

Lewis Crk.
Trail

6S58X

Rd. 632

Rd. 222

Hwy 49

1 0.5 0 1 Miles

- Creeks
- Road Status**
- Closed
- Open
- Closed Trail
- Closure Area
- National Forest Boundary
- Main Roads