

UNITED STATES DEPARTMENT OF AGRICULTURE
FOREST SERVICE
Columbia River Gorge National Scenic Area

FOREST ORDER NO. 06-22-01-18-13
Area and Trail Closure

Pursuant to 16 USC § 551 and 36 CFR 261.50 (a) and (b), the following acts are prohibited on the Columbia River Gorge National Scenic Area lands within the State of Oregon as shown on the attached maps (Exhibits A, B, C and D). These temporary prohibitions will become effective 11/23/18, and will remain in effect until 11/22/19, or until rescinded.

Prohibitions:

- 1. Going into or being upon an area closed for the protection of public health or safety. (36 CFR § 261.53(e)).**
- 2. Being on a trail. (36 CFR § 261.55(a))**

Closure Area Description:

All National Forest System (NFS) lands and NFS trails administered by the Columbia River Gorge National Scenic Area within Multnomah and Hood River Counties, State of Oregon within the following area:

Lands south of I-84, and north of the Columbia River Gorge National Scenic Area boundary; bounded on the west by the Larch Mountain Trail #441, Multnomah Spur Trail #446 and the Oneonta Trail #424; and bounded on the east by the Pacific Crest Trail (PCT) #2000.

and

Lands within 0.25 miles of the Wyeth Trail #411, from its junction with the Gorge 400 Trail to the Columbia River Gorge National Scenic Area Boundary.

EXCEPT:

- Eagle Creek Recreation Area: Day use parking, picnic area, and picnic shelter are open [See map on Exhibit D].
- The following trailheads are open:
 - Horsetail Falls Trailhead
- The following trails and the area 25 feet to either side of trail center line are open:
 - Larch Mountain Trail #441
 - Multnomah Spur Trail #446
 - Oneonta Trail #424, from the Larch Mountain Road to the intersection of the Multnomah Spur Trail #446.
 - Horsetail Falls & Trail (#438), from the Horsetail Falls Trailhead to Ponytail Falls.

See Attached Exhibits A, B, C and D.

Exemptions:

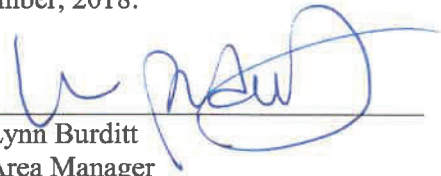
Pursuant to Title 36 CFR 261.50(e), the following persons are exempt from this order:

- (1) Any person with a permit specifically authorizing the otherwise prohibited act or omission.
- (2) Any Federal, State, or local official or member of an organized rescue or firefighting force in the performance of an official duty.
- (3) The following Agencies engaged in business in the area:
 - Bonneville Power Administration
 - United States Army Corps of Engineers
 - Oregon Department of Fish & Wildlife for fish hatchery operations.
 - Oregon Department of Transportation
 - Oregon Parks and Recreation Department

Purpose:

This closure is necessary to provide protection for forest users from hazards present in the area following the Eagle Creek Fire.

Done at Hood River, Oregon this 20th day of November, 2018.



Lynn Burditt
Area Manager
Columbia River Gorge National Scenic Area

Violations of these prohibitions are punishable by a fine of not more than \$5,000 for an individual or \$10,000 for an organization, or imprisonment for not more than 6 months, or both. (16 U.S.C.551, and 18 U.S.C. 3559 and 3571)

R. 5 E.

R. 6 E.

R. 7 E.

R. 7.5 E.

R. 8 E.

R. 9 E.

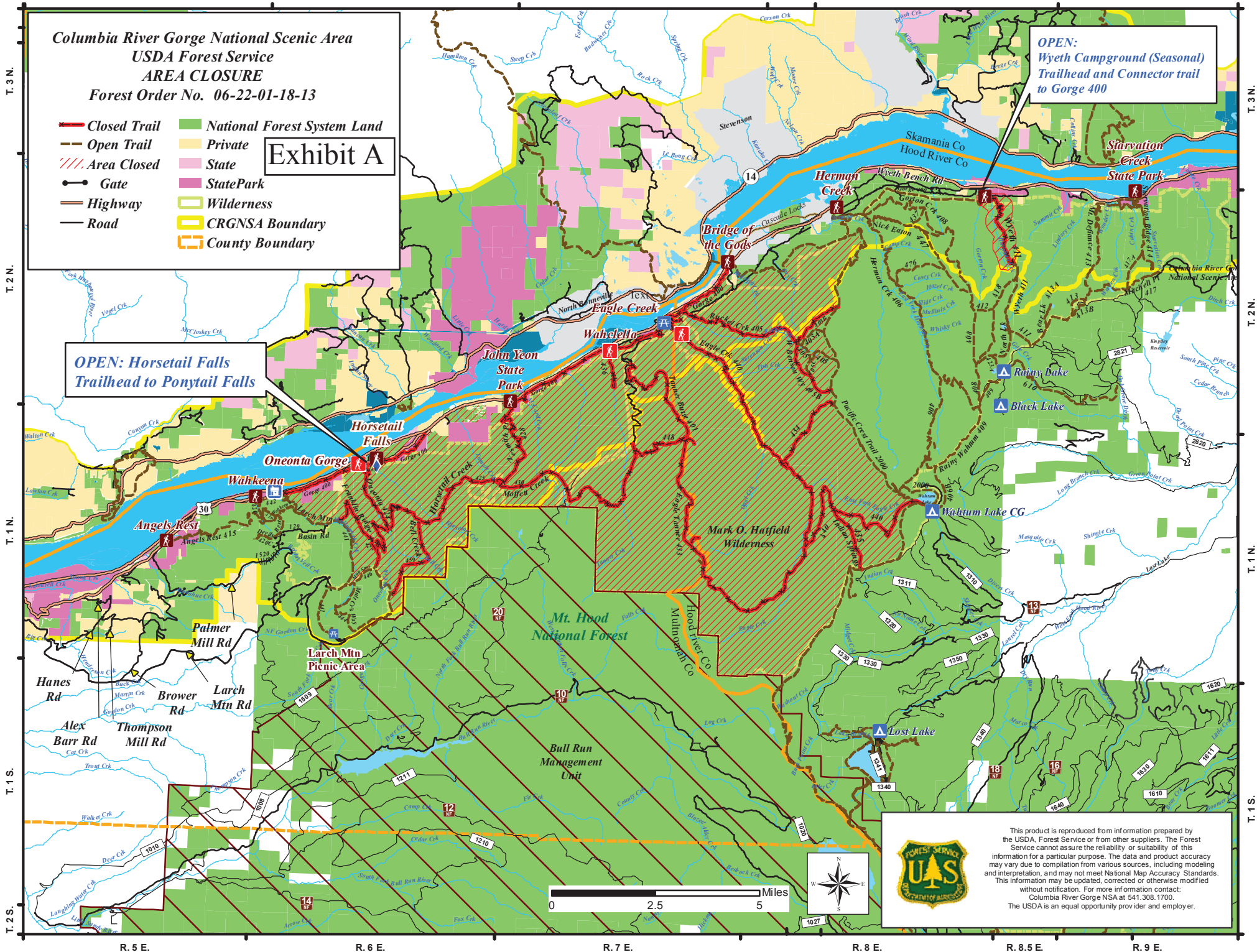
Columbia River Gorge National Scenic Area
USDA Forest Service
AREA CLOSURE
 Forest Order No. 06-22-01-18-13

- | | |
|--------------|-----------------------------|
| Closed Trail | National Forest System Land |
| Open Trail | Private |
| Area Closed | State |
| Gate | State Park |
| Highway | Wilderness |
| Road | CRGNSA Boundary |
| | County Boundary |

Exhibit A

OPEN: Horsetail Falls
Trailhead to Ponytail Falls

OPEN:
Wyeth Campground (Seasonal)
Trailhead and Connector trail
to Gorge 400



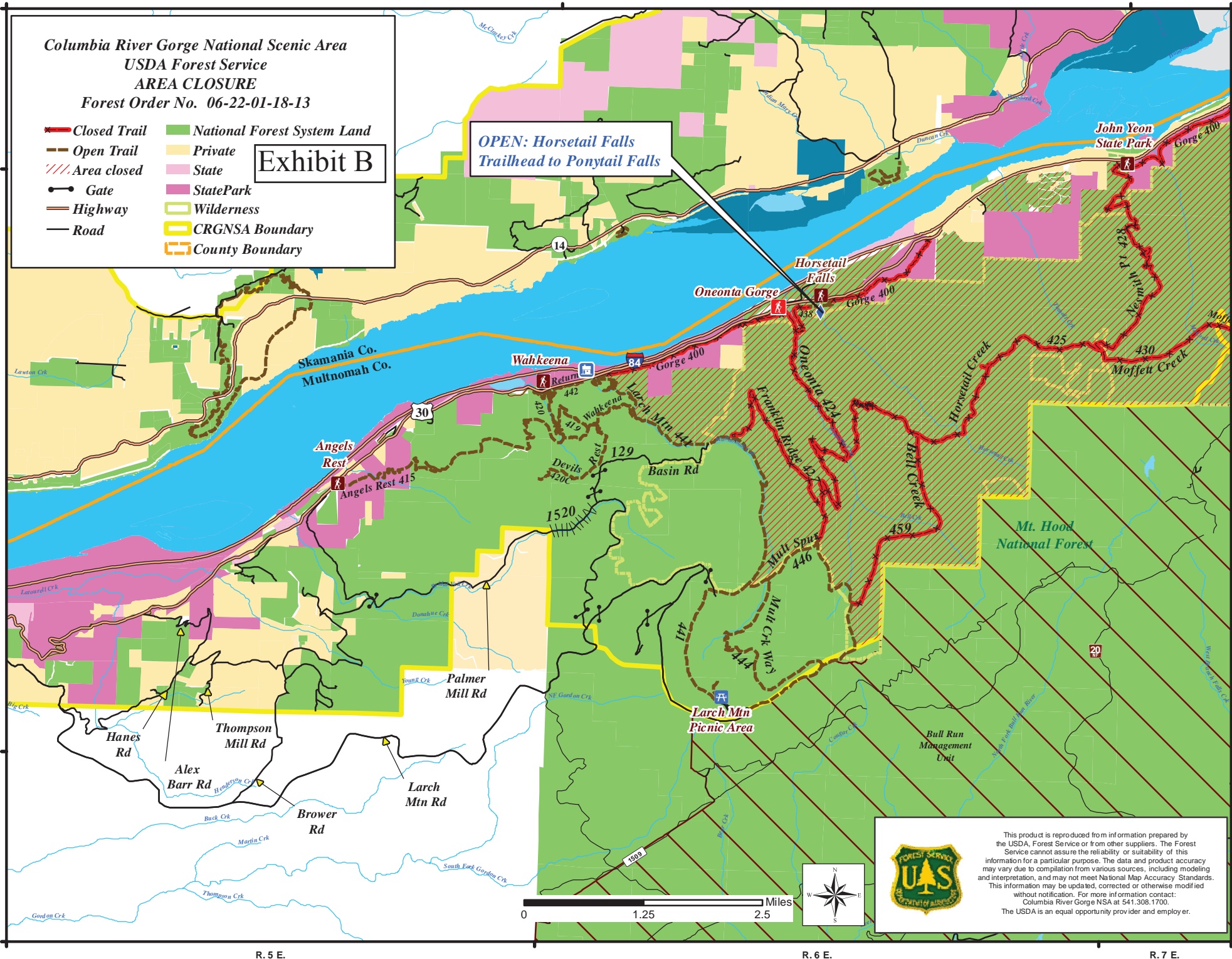
This product is reproduced from information prepared by the USDA, Forest Service or from other suppliers. The Forest Service cannot assure the reliability or suitability of this information for a particular purpose. The data and product accuracy may vary due to compilation from various sources, including modeling and interpretation, and may not meet National Map Accuracy Standards. This information may be updated, corrected or otherwise modified without notification. For more information contact: Columbia River Gorge NSA at 541.308.1700. The USDA is an equal opportunity provider and employer.

Columbia River Gorge National Scenic Area
USDA Forest Service
AREA CLOSURE
Forest Order No. 06-22-01-18-13

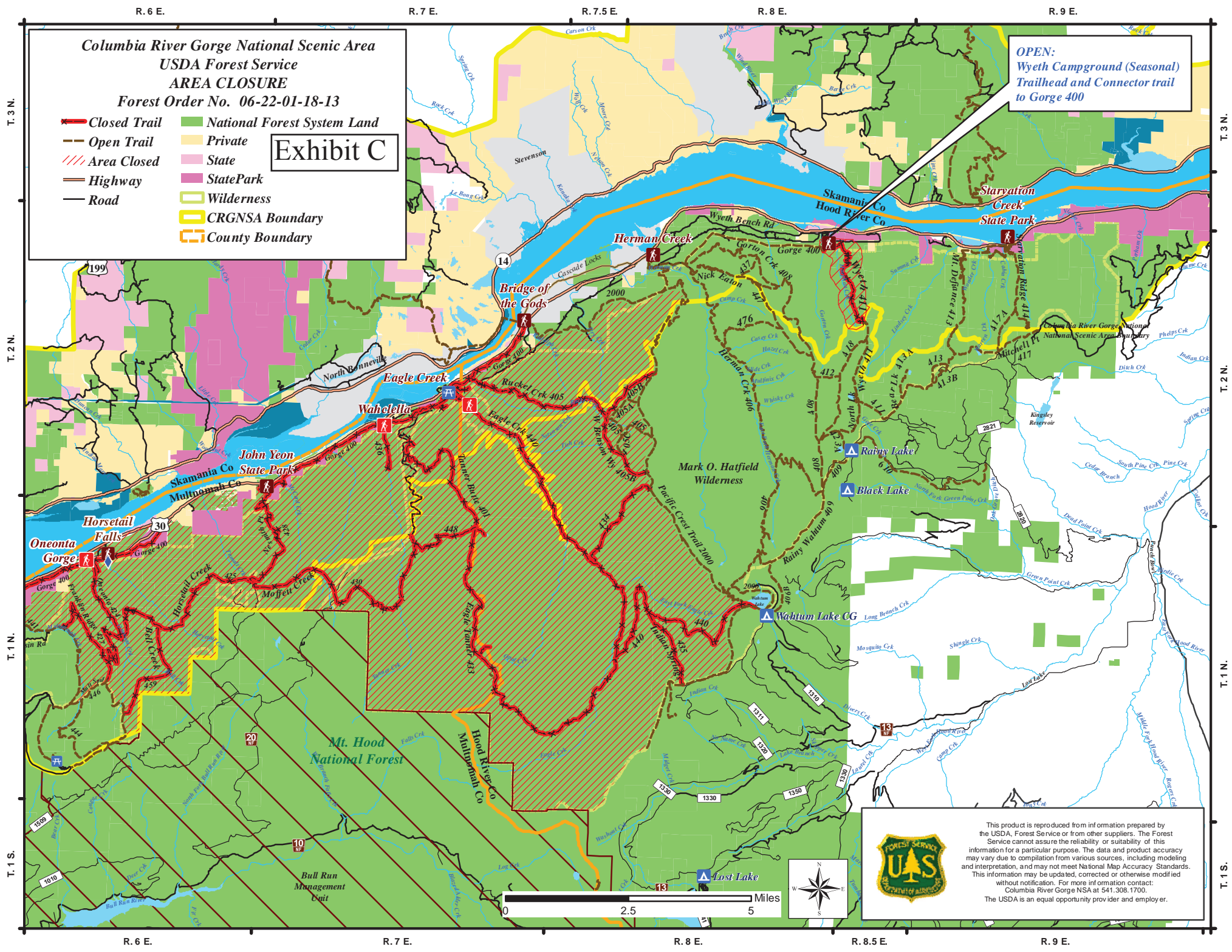
- | | |
|--------------|-----------------------------|
| Closed Trail | National Forest System Land |
| Open Trail | Private |
| Area closed | State |
| Gate | State Park |
| Highway | Wilderness |
| Road | CRGNSA Boundary |
| | County Boundary |

Exhibit B

**OPEN: Horsetail Falls
 Trailhead to Ponytail Falls**



This product is reproduced from information prepared by the USDA, Forest Service or from other suppliers. The Forest Service cannot assure the reliability or suitability of this information for a particular purpose. The data and product accuracy may vary due to compilation from various sources, including modeling and interpretation, and may not meet National Map Accuracy Standards. This information may be updated, corrected or otherwise modified without notification. For more information contact: Columbia River Gorge NSA at 541.308.1700. The USDA is an equal opportunity provider and employer.




Columbia River Gorge National Scenic Area
USDA Forest Service
AREA CLOSURE
Forest Order No. 06-22-01-18-13

Closed Trail	National Forest System Land
Open Trail	Private
Area Closed	State
Highway	StatePark
Road	Wilderness
	CRGNSA Boundary
	County Boundary

Exhibit C

OPEN:
Wyeth Campground (Seasonal)
Trailhead and Connector trail
to Gorge 400

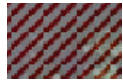


This product is reproduced from information prepared by the USDA, Forest Service or from other suppliers. The Forest Service cannot assure the reliability or suitability of this information for a particular purpose. The data and product accuracy may vary due to compilation from various sources, including modeling and interpretation, and may not meet National Map Accuracy Standards. This information may be updated, corrected or otherwise modified without notification. For more information contact: Columbia River Gorge NSA at 541.308.1700. The USDA is an equal opportunity provider and employer.

Columbia River Gorge National Scenic Area
USDA Forest Service
Eagle Creek Closure to All Public Use
Order No. 06-22-01-18-13

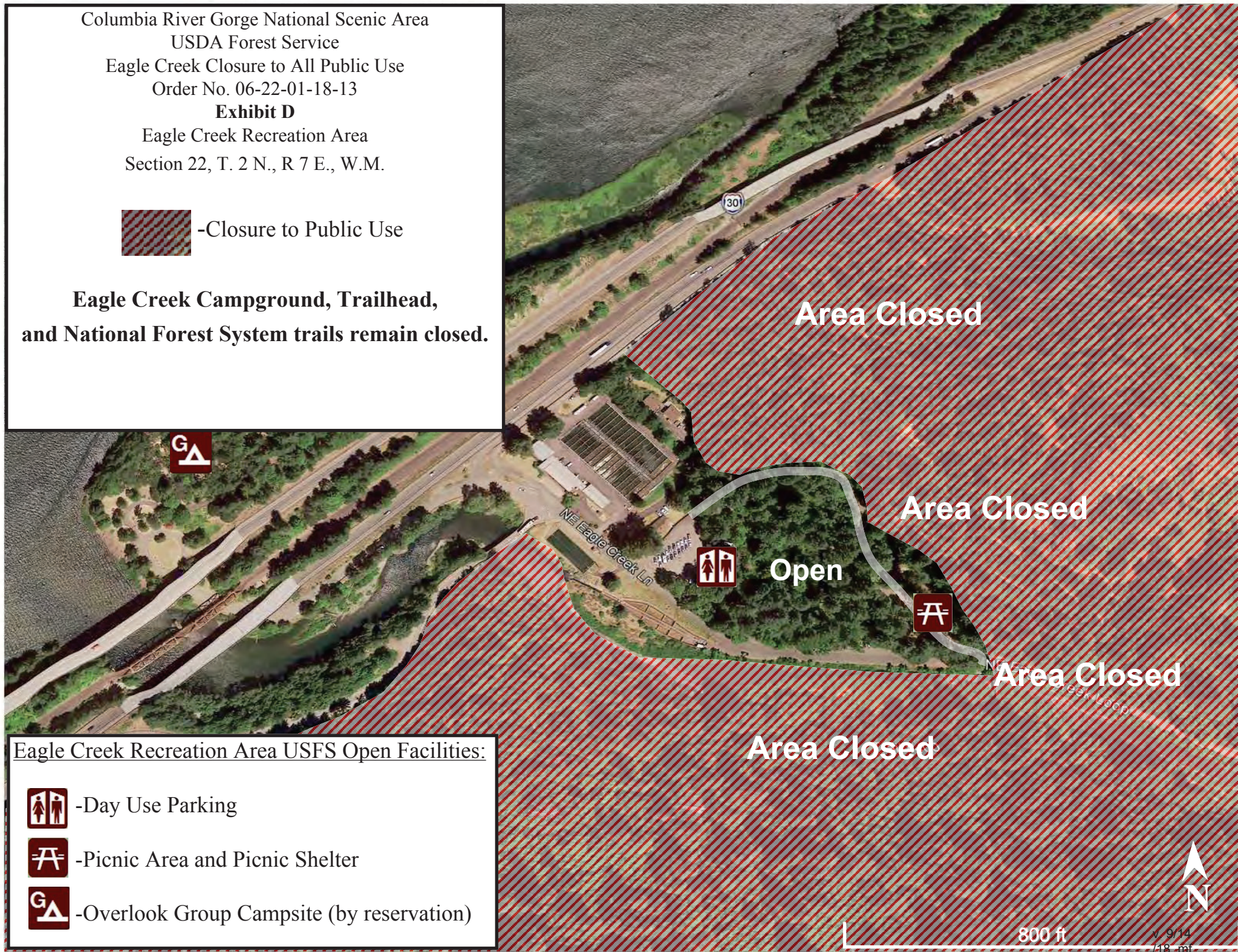
Exhibit D

Eagle Creek Recreation Area
Section 22, T. 2 N., R 7 E., W.M.



-Closure to Public Use

**Eagle Creek Campground, Trailhead,
and National Forest System trails remain closed.**



Eagle Creek Recreation Area USFS Open Facilities:



-Day Use Parking



-Picnic Area and Picnic Shelter



-Overlook Group Campsite (by reservation)