



**Forest Service**

**Cherokee National Forest**

2800 Ocoee Street N.

Cleveland, TN 37312

Web: <http://fs.usda.gov/cherokee>

# News Release



Media Contact: Terry McDonald  
(423) 476-9729

## Size of Tellico Area Closure Reduced

### Cherokee National Forest

**CLEVELAND, TENN – October 30, 2017---** The Forest Order temporarily closing a portion of the Tellico Ranger District in Cherokee National Forest has been reduced in size to approximately 1,000 acres. The closure will remain in place while the U.S. Navy conducts an investigation of the October 1 crash of an aircraft from the Naval Air Station in Meridian, Mississippi.

The October 30 revised temporary closure order applies to the following areas:

**Entering, using or being on Forest Service Roads, Trails and areas listed below.**

1. FS-RD 210 – Tellico River Road from Rough Ridge Campground to Stateline.
2. Looking Glass Mountain area east of Tellico River from the Fish Hatchery to state line approximately 1,008 acres.
3. Stateline Campground.

The following sites are open:

- Pheasant Field picnic area
- Birch Branch campground
- Davis Branch campground
- Rough Ridge campground
- Holder Cove campground

For additional information about the revised Forest Closure Order contact 423-253-8400.

-USDA-

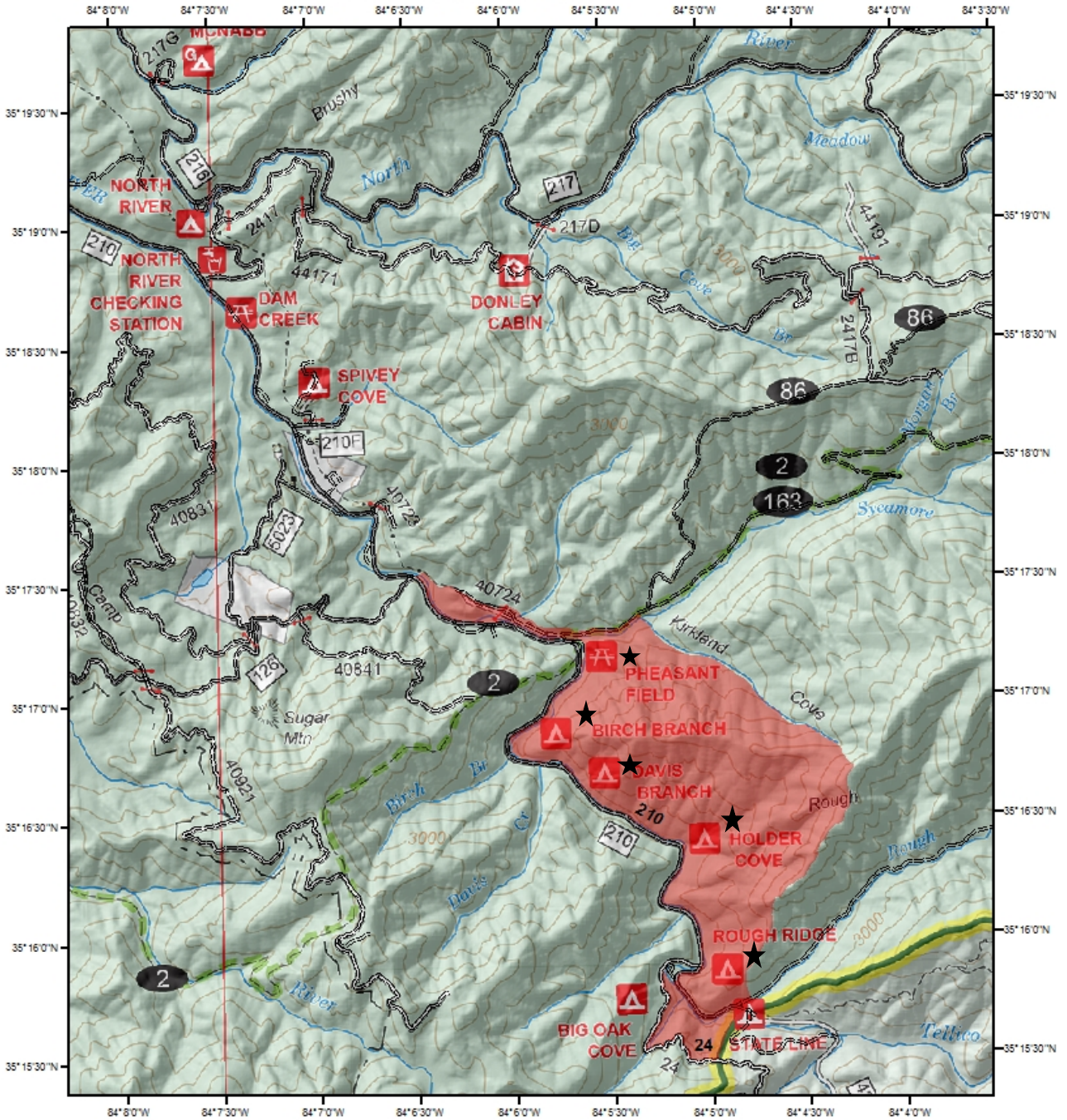




October 30, 2017

Reference Scale: 1:0

# Area Closure



**USDA Forest Service**  
**Cherokee National Forest**  
**Tellico Ranger District**

★ Site open

**Legend**  
 Closure Boundary

