

Silver City Ranger District – Gila NF

DRAFT Inventory Map Identifying Lands with Potential Wilderness Characteristics

This is only Step 1 of a required 4-step process identifying and evaluating lands that may be suitable for inclusion in the National Wilderness Preservation System, and determine whether to recommend any of the evaluated lands to Congress for wilderness designation. **Congress reserves the authority to designate wilderness through legislation.**

The purpose of the Inventory is to efficiently, effectively, and transparently narrow down and identify all lands in the plan area that may have wilderness characteristics as defined in the [Wilderness Act](#). These DRAFT Inventory maps are available for public review and feedback. The DRAFT Inventory Maps will include all National Forest System areas that are identified to move on to the next step of the process, which is the evaluation of the inventoried lands. This does not mean that all areas on the Inventory map will be proposed or managed as Wilderness, and in fact many lands on the inventory map will likely be removed from further consideration in the later steps of the process.

[Forest Service Handbook 1909.12 Chapter 70](#) provides criteria for lands to be included in the Inventory. Generally, these are:

1. Areas do not contain any roads Forest Service maintenance level 2 or higher;
2. Areas do not contain any substantially noticeable improvements
3. Areas are greater than 5,000 acres, or of a size to be practicable to manage as wilderness

The [Inventory Process for Identifying Lands with Potential Wilderness Characteristics Final Process Paper](#) outlines in detail the process employed to accomplish the Inventory. This process paper was developed with input and feedback from stakeholders during community and technical meetings and draft review periods.

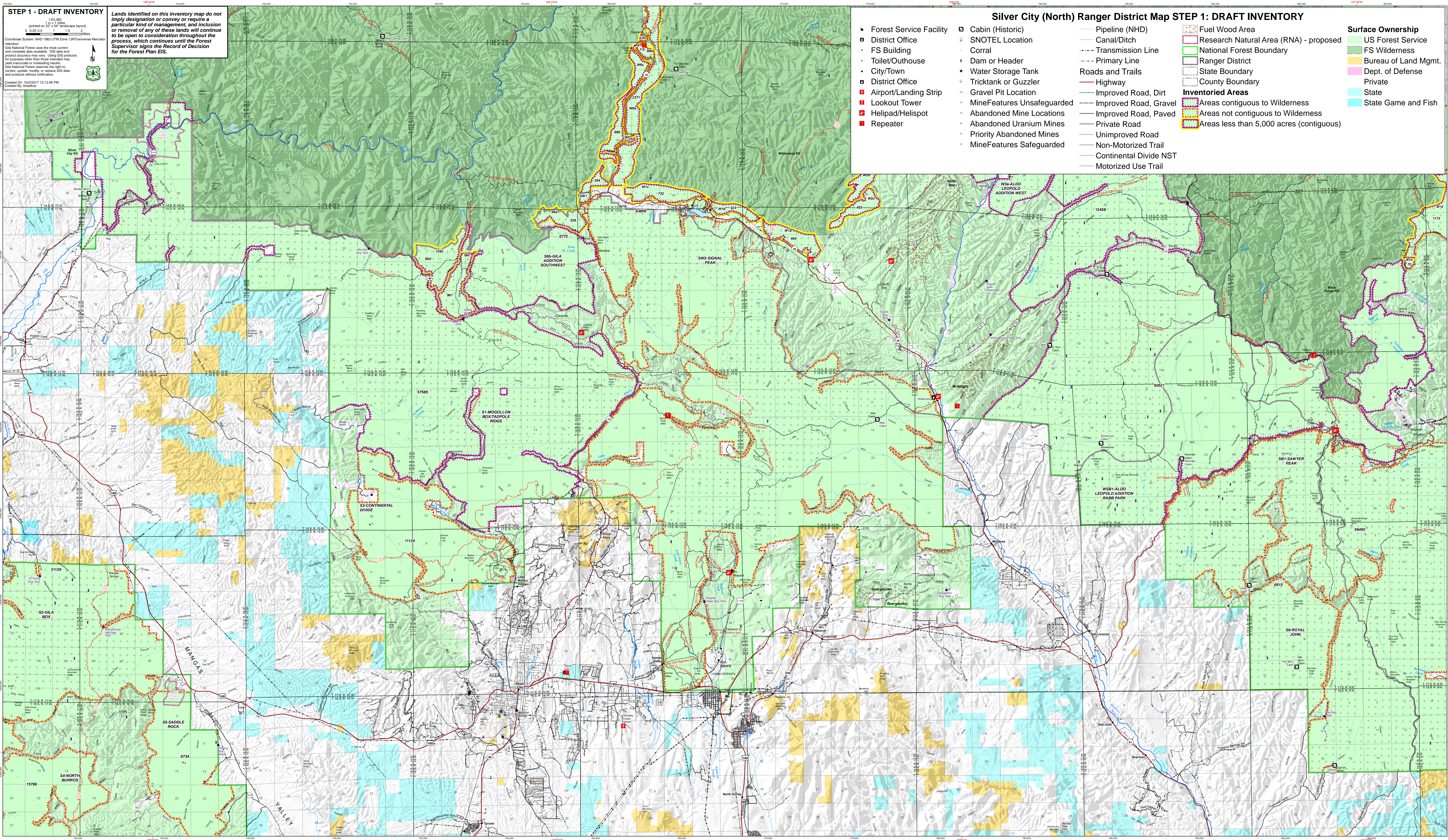
NOTICE:

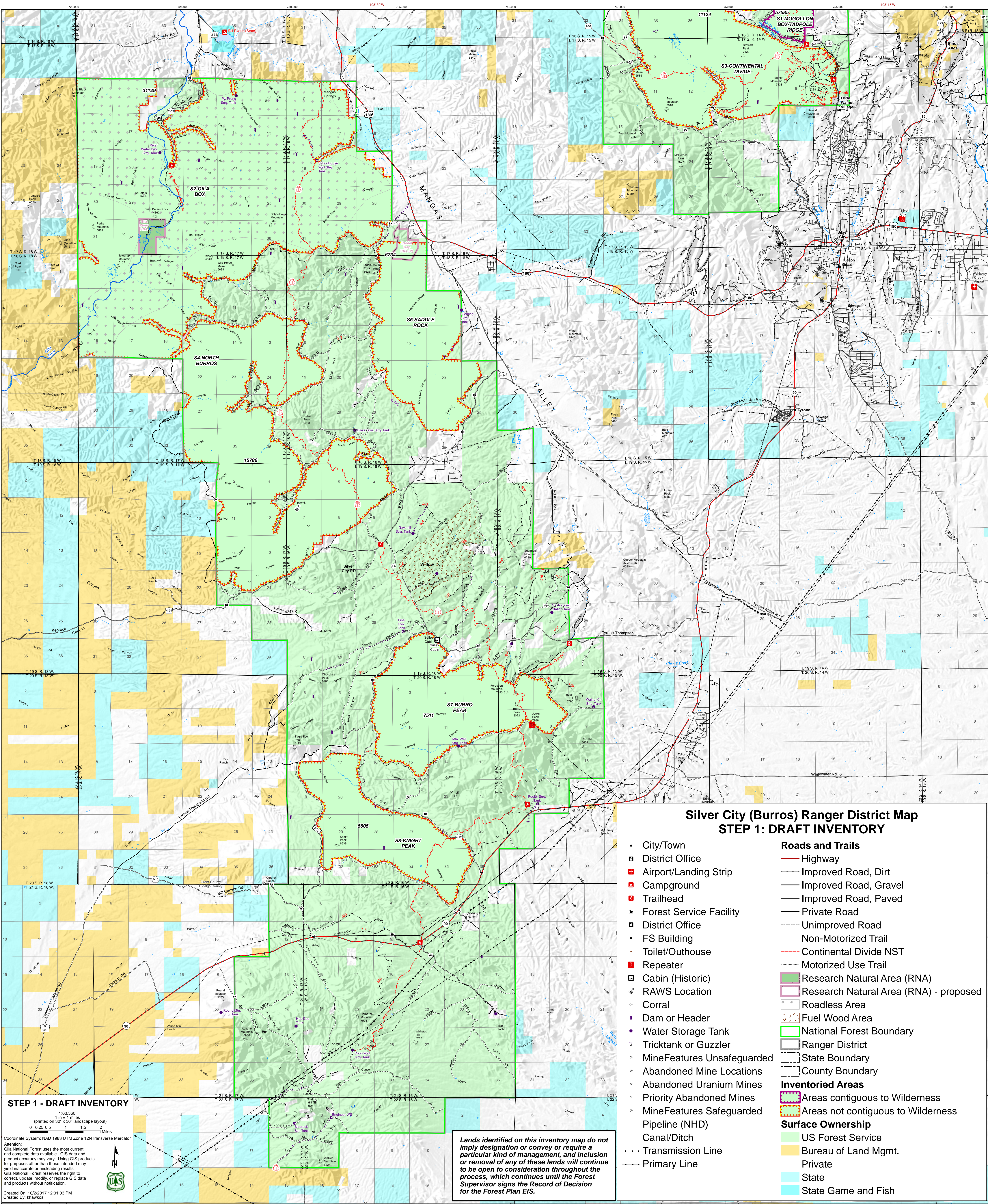
Lands shown on this preliminary series of Inventory maps do not imply designation or convey or require a particular kind of management, and inclusion or removal of any of these lands will continue to be open to consideration throughout the process until the Forest Supervisor signs the Record of Decision for the Forest Plan EIS. Copies of the DRAFT and FINAL Inventory Maps will be made available in both electronic and hardcopy form.

HOW TO COMMENT:

Please submit your feedback preferably in digital form to gilaplan@fs.fed.us, or mail to Gila National Forest, Attn.: Plan Revision, 3005 E. Camino del Bosque, Silver City, NM 88061. Comments on the draft inventory map are most useful if received by December 20, 2017. You can also comment using our Interactive [Web Map](#). If you have comments on a specific inventoried area, please include the Identification Number and Name (e.g. S9-Royal John) in your comment. For information on how to most effectively provide your feedback on the Draft Inventory Maps, see the [Guide to Making Comments](#).

For more information on the Plan Revision Process, including the Inventory and Evaluation for Wilderness Characteristics Process, please visit the [Gila Forest Plan Revision webpage](#).






STEP 1 - DRAFT INVENTORY

1:63,360
1 in = 1 miles
(printed on 30" x 36" landscape layout)
0 0.25 0.5 1 1.5 2
Miles

Coordinate System: NAD 1983 UTM Zone 12N Transverse Mercator

Attention: Gila National Forest uses the most current and complete data available. GIS data and product accuracy may vary. Using GIS products for purposes other than those intended may yield inaccurate or misleading results. Gila National Forest reserves the right to correct, update, modify, or replace GIS data and products without notification.

Created On: 10/2/2017 12:01:03 PM
Created By: khawkos



Lands identified on this inventory map do not imply designation or convey or require a particular kind of management, and inclusion or removal of any of these lands will continue to be open to consideration throughout the process, which continues until the Forest Supervisor signs the Record of Decision for the Forest Plan EIS.

- ### Silver City (Burros) Ranger District Map STEP 1: DRAFT INVENTORY
- City/Town
 - District Office
 - Airport/Landing Strip
 - Campground
 - Trailhead
 - Forest Service Facility
 - District Office
 - FS Building
 - Toilet/Outhouse
 - Repeater
 - Cabin (Historic)
 - RAWS Location
 - Corral
 - Dam or Header
 - Water Storage Tank
 - Tricktank or Guzzler
 - MineFeatures Unsafeguarded
 - Abandoned Mine Locations
 - Abandoned Uranium Mines
 - Priority Abandoned Mines
 - MineFeatures Safeguarded
 - Pipeline (NHD)
 - Canal/Ditch
 - Transmission Line
 - Primary Line
- #### Roads and Trails
- Highway
 - Improved Road, Dirt
 - Improved Road, Gravel
 - Improved Road, Paved
 - Private Road
 - Unimproved Road
 - Non-Motorized Trail
 - Motorized Use Trail
 - Continental Divide NST
- #### Inventoried Areas
- Research Natural Area (RNA)
 - Research Natural Area (RNA) - proposed
 - Roadless Area
 - Fuel Wood Area
 - National Forest Boundary
 - Ranger District
 - State Boundary
 - County Boundary
- #### Surface Ownership
- US Forest Service
 - Bureau of Land Mgmt.
 - Private
 - State
 - State Game and Fish