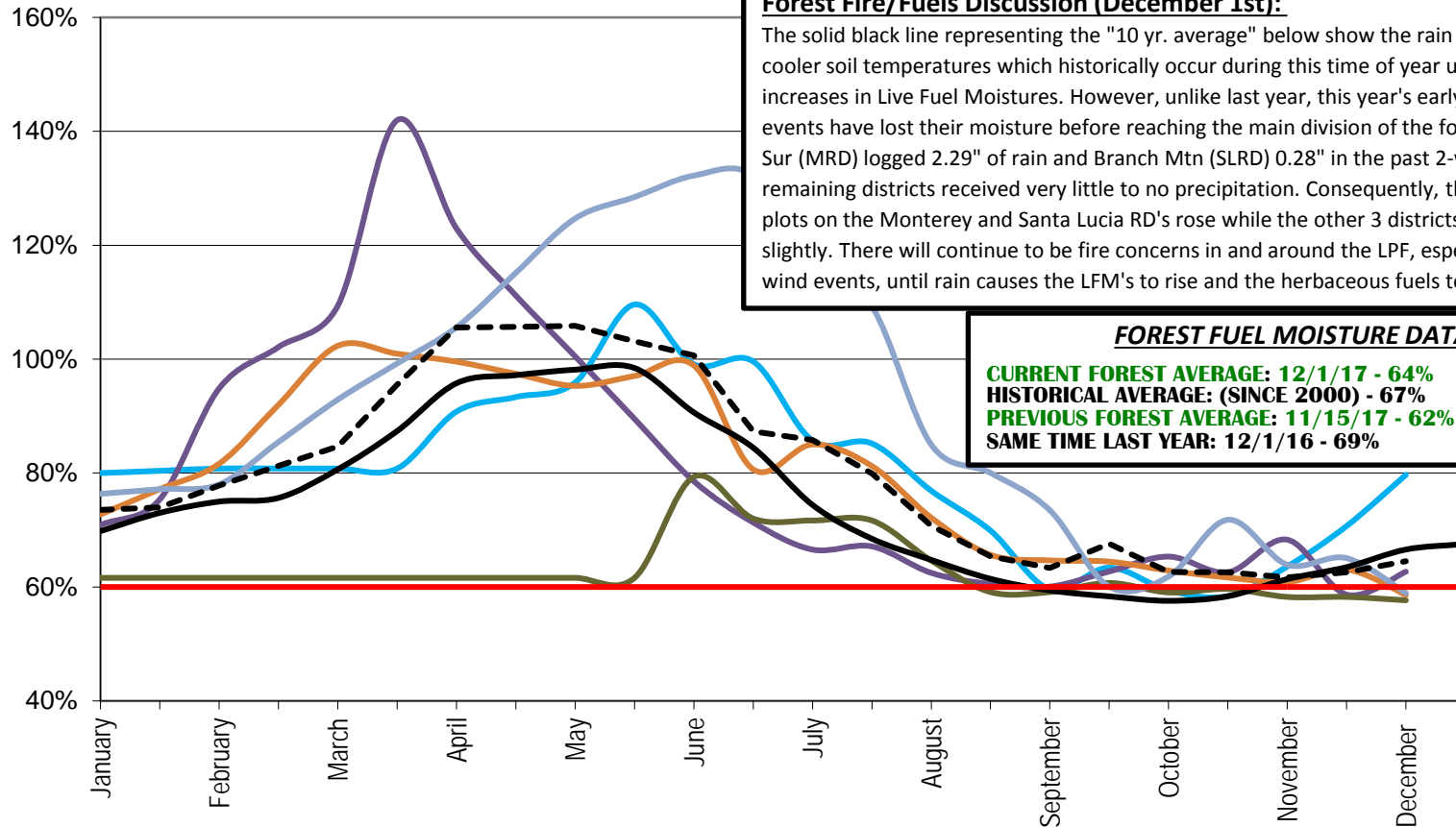




LOS PADRES NATIONAL FOREST LIVE FUEL MOISTURE DATA 2017



Forest Fire/Fuels Discussion (December 1st):
 The solid black line representing the "10 yr. average" below show the rain events and cooler soil temperatures which historically occur during this time of year usually cause increases in Live Fuel Moistures. However, unlike last year, this year's early season storm events have lost their moisture before reaching the main division of the forest. Big Sur (MRD) logged 2.29" of rain and Branch Mtn (SLRD) 0.28" in the past 2-weeks. The remaining districts received very little to no precipitation. Consequently, the LFM's for the plots on the Monterey and Santa Lucia RD's rose while the other 3 districts decreased slightly. There will continue to be fire concerns in and around the LPF, especially during wind events, until rain causes the LFM's to rise and the herbaceous fuels to "green-up".

FOREST FUEL MOISTURE DATA
CURRENT FOREST AVERAGE: 12/1/17 - 64%
HISTORICAL AVERAGE: (SINCE 2000) - 67%
PREVIOUS FOREST AVERAGE: 11/15/17 - 62%
SAME TIME LAST YEAR: 12/1/16 - 69%

- Ponderosa (MRD)
- Los Alamos (MPRD)
- Gifford (SLRD)
- - - Forest Avg %
- Upper Oso (SBRD)
- 10 YR Avg
- Oak Flat (ORD)
- Critical Point