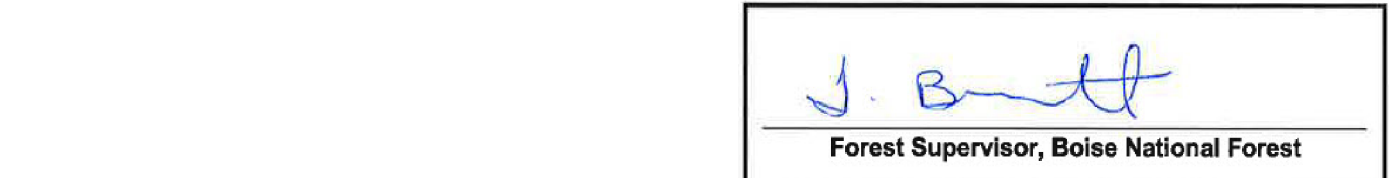


PURPOSE AND CONTENTS OF THIS MAP

The designations shown on this motor vehicle use map (MVUM) were made by the responsible official pursuant to 36 CFR 212.51, are effective as of the date on the front cover of this MVUM, and will remain in effect until superseded by next year's MVUM.



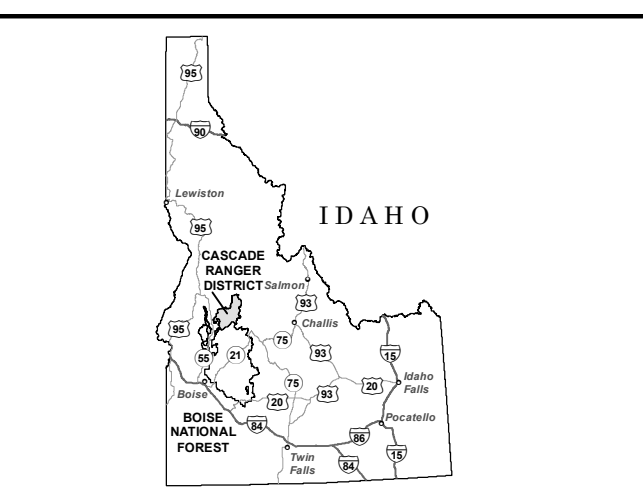
It is the responsibility of the user to acquire the current MVUM. This MVUM shows the National Forest System roads, National Forest System trails, and the areas on National Forest System lands in the Cascade Ranger District that are designated for motor vehicle use pursuant to 36 CFR 212.51. This MVUM also identifies the vehicle classes allowed on each route and in each area; and any seasonal restrictions that apply on those routes and in those areas.

Designation of a road, trail, or area for motor vehicle use by a particular class of vehicle under 36 CFR 212.51 should not be interpreted as encouraging or inviting use or implying that the road, trail, or area is passable, actively maintained, or safe for travel. Motor vehicle designations include parking along designated routes and at facilities associated with designated routes when it is safe to do so and when not causing damage to National Forest System resources. Seasonal weather conditions and natural events may render designated roads and trails impassable for extended periods. Designated areas may contain dangerous or impassable terrain. Many designated roads and trails may be passable only by high-clearance vehicles or four-wheel-drive vehicles. Maintenance of designated roads and trails will depend on available resources, and many may receive little maintenance.

This motor vehicle use map identifies those roads, trails, and areas designated for the motor vehicle use under 36 CFR 212.51 for the purpose of enforcing the prohibition at 36 CFR 261.13. This is a limited purpose. The other public roads are shown for information and navigation purposes only and are not subject to designation under the Forest Service travel management regulation.

These designations apply only to National Forest System roads, National Forest System trails, and areas on National Forest System lands.

VICINITY MAP



PROHIBITIONS

It is prohibited to possess or operate a motor vehicle on National Forest System lands in the Cascade Ranger District other than in accordance with these designations (36 CFR 261.13).

Violators of 36 CFR 261.13 are subject to a fine of up to \$5,000, imprisonment for up to 6 months, or both (18 U.S.C. 3571(e)). This prohibition applies regardless of the presence or absence of signs.

This map does not display nonmotorized uses, over-snow uses, or other facilities and attractions on the Cascade Ranger District. Obtain forest visitor information from the local national forest office.

Designated roads, trails and areas may also be subject to temporary, emergency closures. As a visitor, you must comply with signs notifying you of such restrictions. A national forest may issue an order to close a road, trail or area on a temporary basis to protect the life, health, or safety of forest visitors or the natural or cultural resources in these areas. Such a temporary and/or emergency closure is consistent with the Travel Management Rule (36 CFR 212.52 (b), 36 CFR 261 subpart B).

The designation "road or trail open to all motor vehicles" does not supersede State traffic law.

INFORMATION SOURCES

Important Phone Numbers

Emergency Services.....911
Valley County Sheriff.....208-382-5160
Idaho State Police.....208-846-7500
Report a Wildfire.....208-384-3400

Cascade Ranger District

540 North Main Street
P.O. Box 696
Cascade, ID 83611
208-382-7400

Boise National Forest

1249 S. Vinell Way, Suite 200
Boise, ID 83709
208-373-4100
<http://fs.usda.gov/boise>

Report a Fish or Game Violation

1-800-632-5999

Report an OHV Violation

208-382-7400

OPERATOR RESPONSIBILITIES

Operating a motor vehicle on National Forest System roads, National Forest System trails, and in areas on National Forest System lands carries a greater responsibility than operating that vehicle in a city or other developed setting. Not only must you know and follow all applicable traffic laws, you need to show concern for the environment as well as other forest users. The misuse of motor vehicles can lead to the temporary or permanent closure of any designated road, trail, or area. As a motor vehicle operator, you are also subject to State traffic law, including State requirements for licensing, registration, and operation of the vehicle in question.

Motor vehicle use, especially off-highway vehicle use, involves inherent risks that may cause property damage, serious injury, and possibly death to participants. Drive cautiously and anticipate rough surfaces and features, such as snow, mud, vegetation, and water crossings common to remote driving conditions. By your participation, you voluntarily assume full responsibility for these damages, risks, and dangers. Take care at all times to protect yourself and those under your responsibility.

Much of the Cascade Ranger District is remote. Medical assistance may not be readily available. Cellular telephones do not work in many areas of the Cascade Ranger District. Take adequate food, water, first-aid supplies, and other equipment appropriate for the conditions and expected weather.

ALWAYS REMEMBER TO RESPECT PRIVATE LAND! PROTECT YOUR PRIVILEGE. STAY ON DESIGNATED ROADS AND TRAILS AND IN DESIGNATED AREAS.

Read and understand this map in its entirety. If you have questions, please contact the Cascade Ranger District for clarification.

As a motor vehicle operator on a National Forest System road, trail, or area you must comply with this map, as well as all Federal, State, and local laws and regulations. Compliance with these rules is your responsibility.

In accordance with Federal civil rights law and U.S. Department of Agriculture (USDA) civil rights regulations and policies, the USDA, its Agencies, offices, and employees, and institutions participating in or administering USDA programs are prohibited from discriminating based on race, color, national origin, religion, sex, gender identity (including gender expression), sexual orientation, disability, age, marital status, family/parental status, income derived from a public assistance program, political beliefs, or reprisal or retaliation for prior civil rights activity, in any program or activity conducted or funded by USDA (not all bases apply to all programs). Remedies and complaint filing deadlines vary by program or incident.

Persons with disabilities who require alternative means of communication for program information (e.g., Braille, large print, audiotape, American Sign Language, etc.) should contact the responsible Agency or USDA's TARGET Center at (202) 720-2600 (voice and TTY) or contact USDA through the Federal Relay Service at (800) 877-8339. Additionally, program information may be made available in languages other than English.

To file a program discrimination complaint, complete the USDA Program Discrimination Complaint Form, AD-3027, found online at http://www.ascr.usda.gov/complaint_filing_cust.html and at any USDA office or write a letter addressed to USDA and provide in the letter all of the information requested in the form. To request a copy of the complaint form, call (866) 632-6992. Submit your completed form or letter to USDA by: (1) mail: U.S. Department of Agriculture, Office of the Assistant Secretary for Civil Rights, 1400 Independence Avenue, SW, Washington, D.C. 20250-9410; (2) fax: (202) 690-7442; or (3) email: program.intake@usda.gov.

USDA is an equal opportunity provider, employer, and lender.

Legend

- Roads Open to Highway Legal Vehicles
- Roads Open to All Vehicles
- Trails Open to All Vehicles
- Trails Open to Vehicles 50" or Less in Width
- Trails Open to Motorcycles Only
- Special Vehicle Designation (See Table)
- Seasonal Designation (See Table)
- Dispersed Camping, Both Sides
- Dispersed Camping, Left Side
- Dispersed Camping, Right Side (See table for information)
- Highways, U.S. State
- Other Public Roads
- Other Public Trails
- Short Route Identifier
- FS Campground
- Picnic Area
- Motorized Trailhead
- Information Site
- Peaks
- Forest or Unit Boundary
- National Forest System Lands
- Non-National Forest System Lands within the National Forest
- Wilderness Areas
- Township and Range Lines
- Section Lines
- Lakes and Rivers

0 0.5 1 2 3 Miles

N

EXPLANATION OF LEGEND ITEMS

Roads Open to Highway Legal Vehicles Only:

These roads are open only to motor vehicles licensed under State law for general operation on all public roads within the state.

Roads Open to All Vehicles:

These roads are open to all motor vehicles, including smaller off-highway vehicles that may not be licensed for highway use (but not to oversize or overweight vehicles under State traffic laws).

Trails Open to All Vehicles:

These trails are open to all motor vehicles, including both highway legal and nonhighway legal vehicles.

Trails Open to Vehicles 50 inches or Less in Width:

Trails open only to motor vehicles less than 50 inches in width at the widest point on the vehicle.

Trails Open to Motorcycles Only:

These trails are open only to motorcycles. Sidecars are not permitted.

Special Vehicle Designation:

This symbol indicates the road or trail is open to classes of vehicles other than those listed above. Refer to the Seasonal and Special Designation Table for further instructions.

Seasonal Designation:

This symbol, used in conjunction with one of the other road or trail symbols, indicates that the road or trail is open only during certain portions of the year. Refer to Seasonal and Special Designation Table for further instructions.

Dispersed Camping:

Dispersed Camping, Both Sides

Dispersed Camping, Left Side

Dispersed Camping, Right Side

This symbol is used along with a designated road or trail to indicate limited cross-country motor vehicle use within a specific distance of that route, solely for the purpose of dispersed camping. The dots indicate where this activity is permitted. They may be on the left, right, or both sides of the route. Refer to the Dispersed Camping Table for specifics.

Other Public Roads and Trails:

Highways, U.S. State

Other Public Roads

Other Public Trails

These symbols are used to show routes the Forest Service does not have jurisdiction over and has not designated for motorized use. These symbols are part of the reference layers showing connections to towns and cities outside the forest boundary.

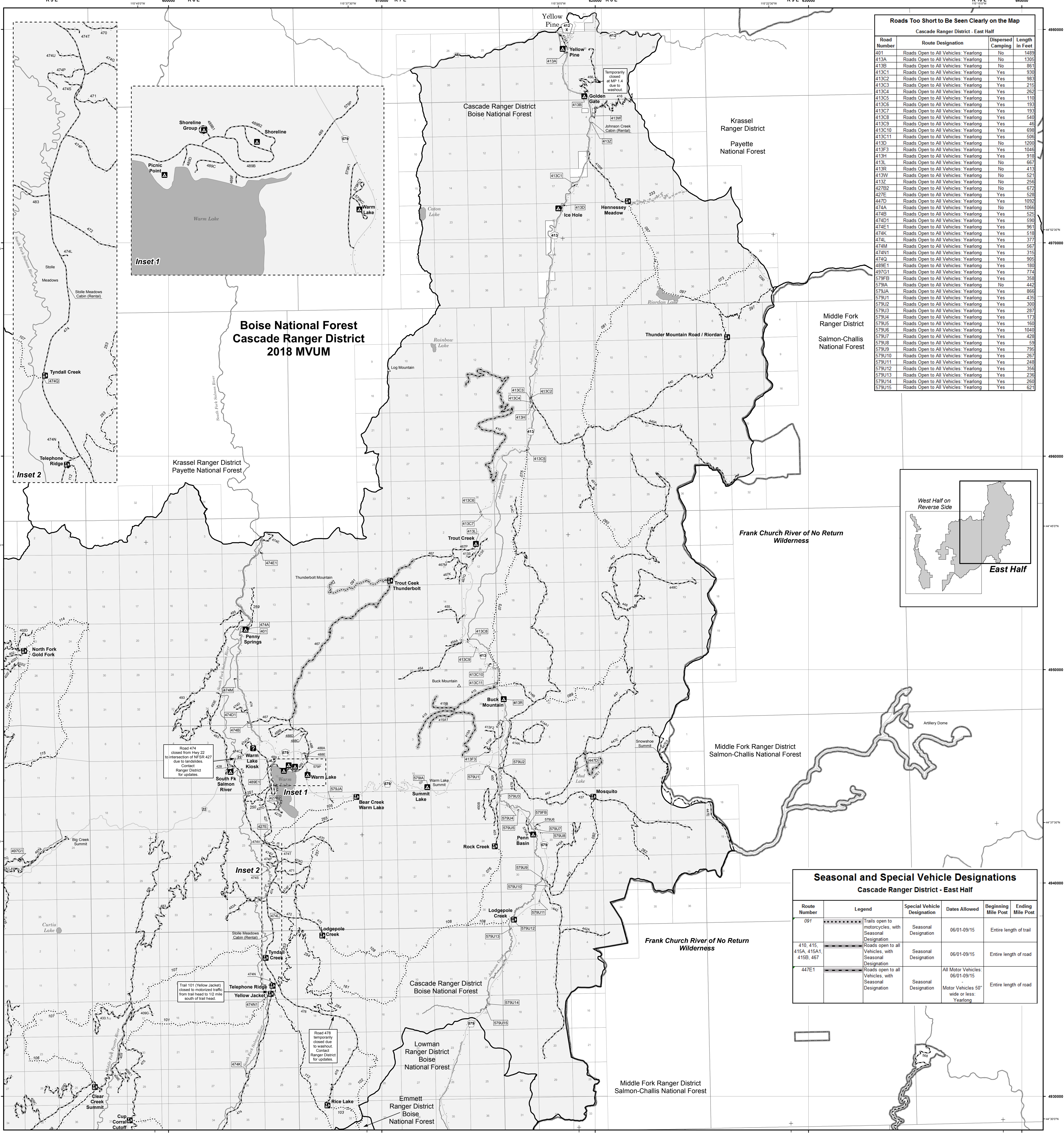
Short Route Identifier:

This symbol is used for roads that are too short to show a symbol type on the map. The symbol contains the number of the road or trail. Users should refer to the corresponding number in the Short Route Table for designation information.

Motorized Trail Access:

This symbol indicates a trailhead for access to a motorized route. Not all motorized routes have trailheads and those that do may range from primitive to developed.

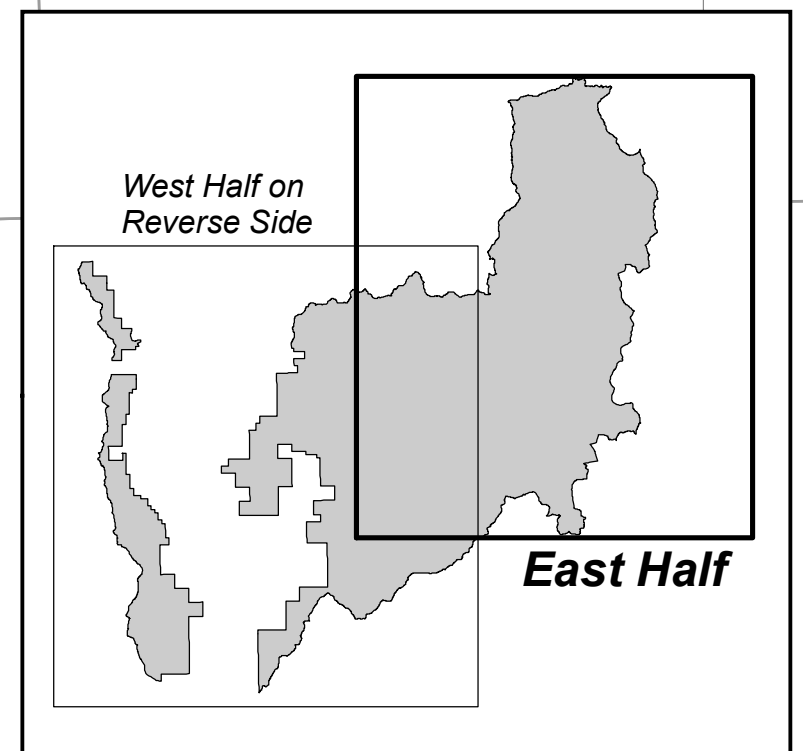
When designated on the Motor Vehicle Use Map, motor vehicle use off of designated roads and trails for the purpose of dispersed camping is permitted for up to 300 feet from the centerline of the road and 100 feet from the centerline of the trail when it is safe to do so and when not causing damage to National Forest System resources.



Roads Too Short to Be Seen Clearly on the Map

Cascade Ranger District - East Half

Road Number	Route Designation	Dispersed Camping	Length in Feet
401	Roads Open to All Vehicles - Yearlong	No	1489
413A	Roads Open to All Vehicles - Yearlong	No	1305
413B	Roads Open to All Vehicles - Yearlong	No	861
413C1	Roads Open to All Vehicles - Yearlong	Yes	930
413C2	Roads Open to All Vehicles - Yearlong	Yes	983
413C3	Roads Open to All Vehicles - Yearlong	Yes	215
413C4	Roads Open to All Vehicles - Yearlong	Yes	262
413C5	Roads Open to All Vehicles - Yearlong	Yes	110
413C6	Roads Open to All Vehicles - Yearlong	Yes	193
413C7	Roads Open to All Vehicles - Yearlong	Yes	193
413C8	Roads Open to All Vehicles - Yearlong	Yes	549
413C9	Roads Open to All Vehicles - Yearlong	Yes	45
413C10	Roads Open to All Vehicles - Yearlong	Yes	698
413C11	Roads Open to All Vehicles - Yearlong	Yes	505
413D	Roads Open to All Vehicles - Yearlong	No	1886
413F3	Roads Open to All Vehicles - Yearlong	Yes	1040
413H	Roads Open to All Vehicles - Yearlong	Yes	919
413L	Roads Open to All Vehicles - Yearlong	No	867
413R	Roads Open to All Vehicles - Yearlong	No	419
413W	Roads Open to All Vehicles - Yearlong	No	521
413Z	Roads Open to All Vehicles - Yearlong	No	256
427B2	Roads Open to All Vehicles - Yearlong	No	672
427E	Roads Open to All Vehicles - Yearlong	Yes	528
447D	Roads Open to All Vehicles - Yearlong	Yes	1092
474A	Roads Open to All Vehicles - Yearlong	No	1066
474B	Roads Open to All Vehicles - Yearlong	Yes	525
474D1	Roads Open to All Vehicles - Yearlong	Yes	580
474E1	Roads Open to All Vehicles - Yearlong	Yes	961
474K	Roads Open to All Vehicles - Yearlong	Yes	519
474L	Roads Open to All Vehicles - Yearlong	Yes	377
474M	Roads Open to All Vehicles - Yearlong	Yes	567
474N1	Roads Open to All Vehicles - Yearlong	Yes	315
474Q	Roads Open to All Vehicles - Yearlong	Yes	905
489E1	Roads Open to All Vehicles - Yearlong	Yes	180
497C1	Roads Open to All Vehicles - Yearlong	Yes	774
579FB	Roads Open to All Vehicles - Yearlong	Yes	358
579IA	Roads Open to All Vehicles - Yearlong	No	442
579JA	Roads Open to All Vehicles - Yearlong	Yes	866
579J1	Roads Open to All Vehicles - Yearlong	Yes	435
579J2	Roads Open to All Vehicles - Yearlong	Yes	300
579J3	Roads Open to All Vehicles - Yearlong	Yes	287
579J4	Roads Open to All Vehicles - Yearlong	Yes	173
579J5	Roads Open to All Vehicles - Yearlong	Yes	169
579J6	Roads Open to All Vehicles - Yearlong	Yes	1040
579J7	Roads Open to All Vehicles - Yearlong	Yes	428
579J8	Roads Open to All Vehicles - Yearlong	Yes	59
579J9	Roads Open to All Vehicles - Yearlong	Yes	785
579J10	Roads Open to All Vehicles - Yearlong	Yes	267
579J11	Roads Open to All Vehicles - Yearlong	Yes	248
579J12	Roads Open to All Vehicles - Yearlong	Yes	356
579J13	Roads Open to All Vehicles - Yearlong	Yes	238
579J14	Roads Open to All Vehicles - Yearlong	Yes	260
579J15	Roads Open to All Vehicles - Yearlong	Yes	621



Seasonal and Special Vehicle Designations

Cascade Ranger District - East Half

Route Number	Legend	Special Vehicle Designation	Dates Allowed	Beginning Mile Post	Ending Mile Post
091	-----	Trails open to motorcycles, with Seasonal Designation	Seasonal Designation	06/01-09/15	Entire length of trail
410, 415, 415A, 415B, 467	-----	Roads open to all Vehicles, with Seasonal Designation	Seasonal Designation	06/01-09/15	Entire length of road
447E1	-----	Roads open to all Vehicles, with Seasonal Designation	Seasonal Designation	All Motor Vehicles: 06/01-09/15 Motor Vehicles 50" wide or less: Yearlong	Entire length of road