

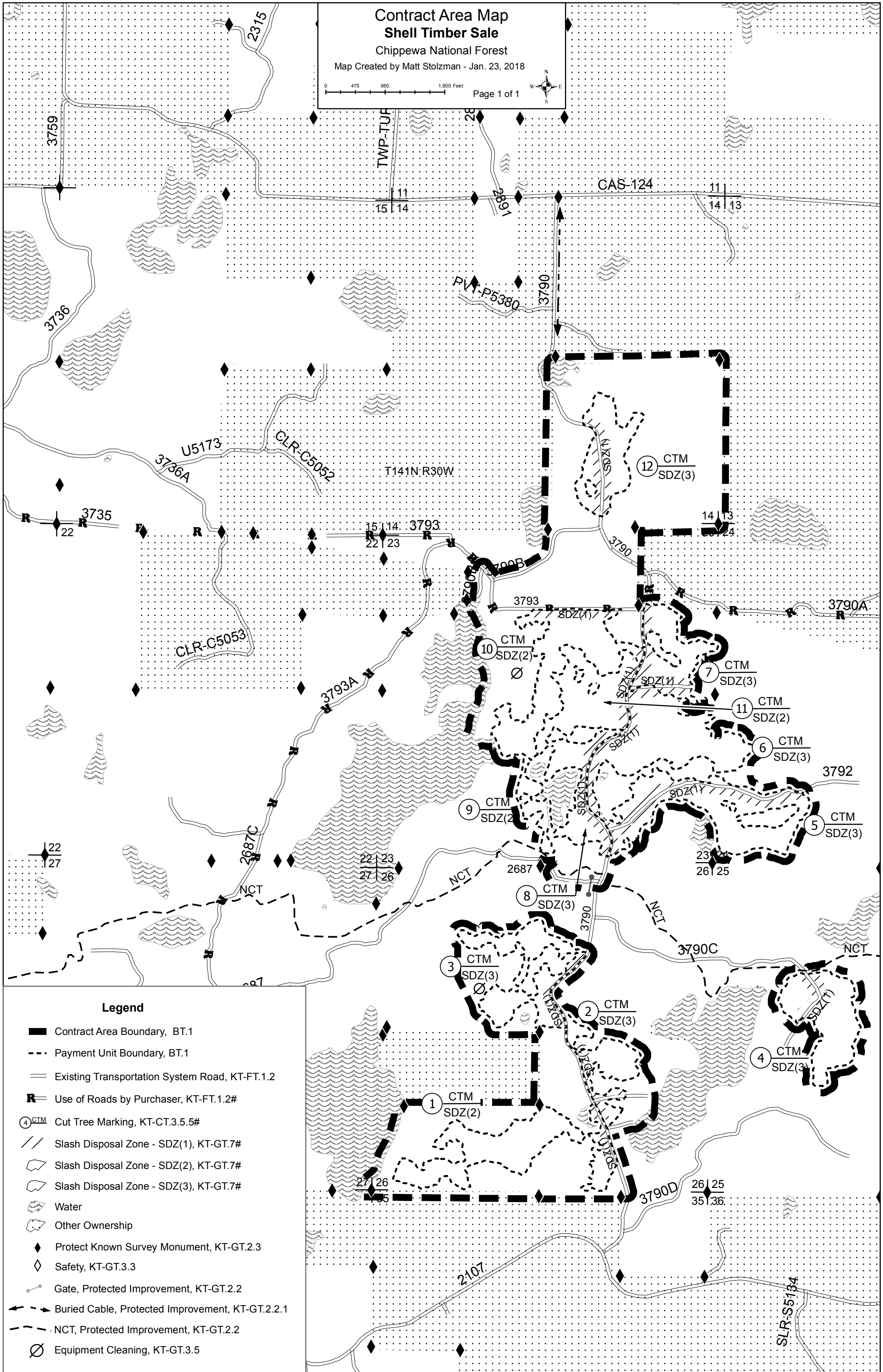
Contract Area Map Shell Timber Sale

Chippewa National Forest

Map Created by Matt Stolzman - Jan. 23, 2018

0 475 950 1,900 Feet

Page 1 of 1



Legend

- Contract Area Boundary, BT.1
- Payment Unit Boundary, BT.1
- Existing Transportation System Road, KT-FT.1.2
- Use of Roads by Purchaser, KT-FT.1.2#
- Cut Tree Marking, KT-CT.3.5.5#
- Slash Disposal Zone - SDZ(1), KT-GT.7#
- Slash Disposal Zone - SDZ(2), KT-GT.7#
- Slash Disposal Zone - SDZ(3), KT-GT.7#
- Water
- Other Ownership
- Protect Known Survey Monument, KT-GT.2.3
- Safety, KT-GT.3.3
- Gate, Protected Improvement, KT-GT.2.2
- Buried Cable, Protected Improvement, KT-GT.2.2.1
- NCT, Protected Improvement, KT-GT.2.2
- Equipment Cleaning, KT-GT.3.5