

R. 5. E.

R. 6. E.

R. 7. E.

R. 7.5 E.

R. 8. E.

R. 9. E.

T. 3. N.

T. 2. N.

T. 1. N.

T. 1. N.

T. 1. N.

T. 1. S.

T. 1. S.

T. 2. S.

T. 3. N.

T. 2. N.

T. 1. N.

T. 1. N.

T. 1. N.

T. 1. S.

T. 1. S.

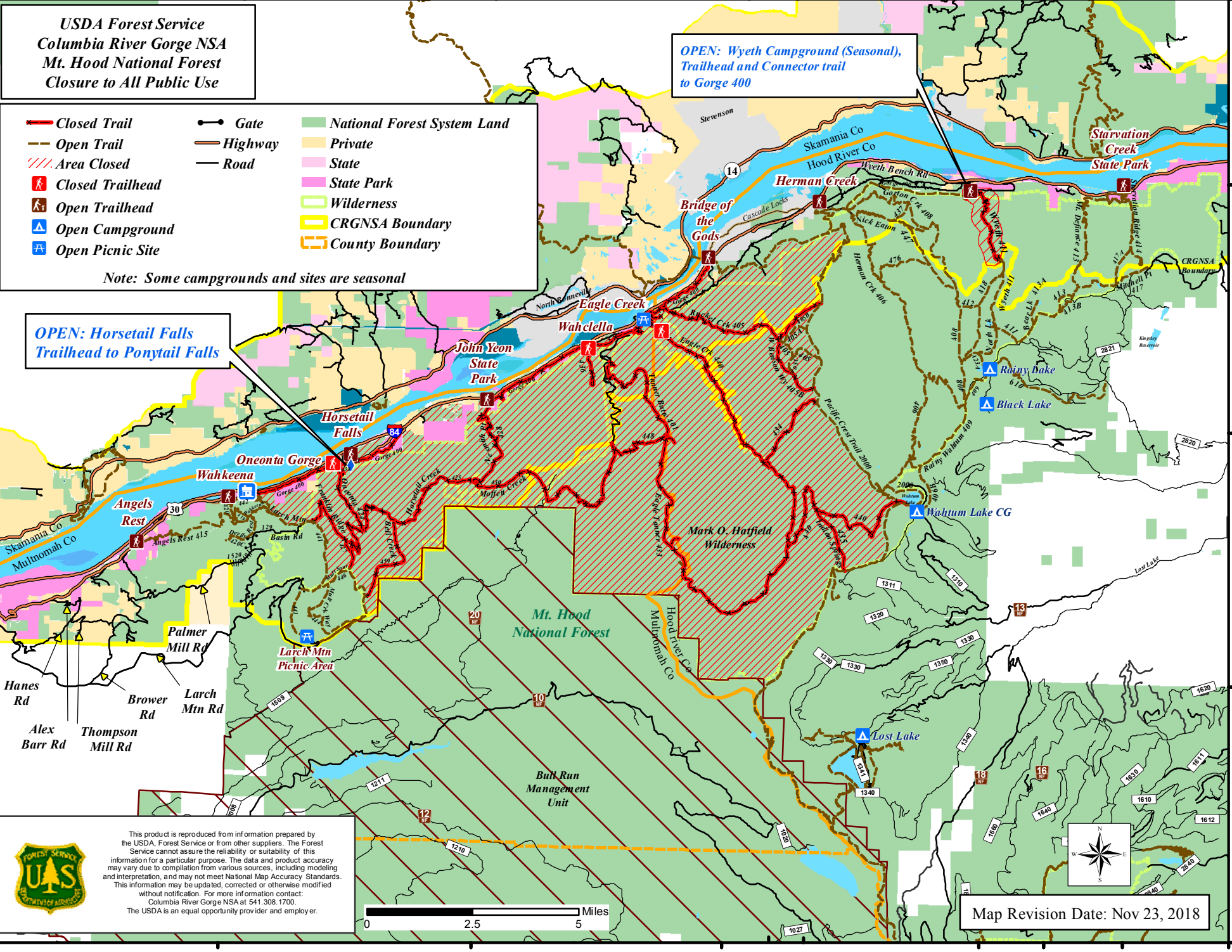
T. 2. S.

USDA Forest Service
Columbia River Gorge NSA
Mt. Hood National Forest
Closure to All Public Use

**OPEN: Wyeth Campground (Seasonal),
 Trailhead and Connector trail
 to Gorge 400**

Note: Some campgrounds and sites are seasonal

**OPEN: Horsetail Falls
 Trailhead to Ponytail Falls**



This product is reproduced from information prepared by the USDA, Forest Service or from other suppliers. The Forest Service cannot assure the reliability or suitability of this information for a particular purpose. The data and product accuracy may vary due to compilation from various sources, including modeling and interpretation, and may not meet National Map Accuracy Standards. This information may be updated, corrected or otherwise modified without notification. For more information contact: Columbia River Gorge NSA at 541.308.1700. The USDA is an equal opportunity provider and employer.

Map Revision Date: Nov 23, 2018

R. 5. E.

R. 6. E.

R. 7. E.

R. 8. E.

R. 8.5 E.

R. 9. E.

Eagle Creek Fire Closures

Last updated 11/16/2018

Roads	CLOSURE STATUS:	JURISDICTION:	ESTIMATED OPEN:
Hist. Col. River Hwy (US 30) Bridal Veil to Ainsworth	Open	OR Dept of Transportation	
Hist. Col. River Hwy (US 30) Troutdale to Bridal Veil	Open	OR Dept of Transportation	
Larch Mountain Rd	Closed at snow gate for winter season.	Multnomah County	Opens spring 2019
Palmer Mill Road (1520)	Closed to motor vehicles / open to pedestrians		
Basin Road (129)	Closed to motor vehicles / open to pedestrians		
Trail, Park, or Feature	CLOSURE STATUS:	JURISDICTION:	ESTIMATED OPEN:
Angel's Rest Trail (#415)	Open	Shared OPRD / USFS	
Anthill Trail (#406B)	Open	USFS Mt. Hood NF	
Bear Lake Trail (#413A)	Open	USFS Mt. Hood NF	
Bell Creek Trail (#459)	Closed	USFS CRGNSA	No timeline
Benson Ruckel Trail (#405A)	Open	USFS Mt. Hood NF	
Benson Spur Trail (#405C)	Open	USFS Mt. Hood NF	
Benson State Recreation Area	Open	Oregon State Parks	
Benson Way Trail (#405B)	Closed	USFS Mt. Hood NF	No timeline
Bridal Veil Falls State Scenic Viewpoint	Open	Oregon State Parks	
Buck Point Trail (#439)	Closed	USFS CRGNSA	No timeline
Casey Creek Trail (#476)	Open	USFS Mt. Hood NF	
Chinidere Cutoff Trail (#406M)	Open	USFS Mt. Hood NF	
Chinidere Mountain Trail (#445)	Open	USFS Mt. Hood NF	
Crown Point State Scenic Corridor (Vista House)	Open	Oregon State Parks	
Dabney State Park	Open	Oregon State Parks	
Dalton Point	Open	Oregon State Parks	
Deadwood Trail (#422)	Open	USFS CRGNSA	
Devils Rest Trail (#420C)	Open	USFS CRGNSA	
Dublin Lake Trail (#401B)	Open	USFS Mt. Hood NF	
Eagle Benson Trail (#434)	Closed	USFS Mt. Hood NF	No timeline
Eagle Creek Day Use Area & Trailhead	Partial: Parking and picnic area open, trailhead and trail closed	USFS CRGNSA	No timeline for area trails to reopen
Eagle Creek Trail (#440)	Closed	USFS CRGNSA & Mt Hood	No timeline
Eagle Tanner Trail (#433)	Closed	USFS Mt. Hood NF	No timeline
Franklin Ridge Trail (#427)	Closed	USFS CRGNSA	No timeline
George W. Joseph State Natural Area	Closed	Oregon State Parks	No timeline

Gorge 400 (MP 0 - 12.5) Angels Rest to Ainsworth	Closed	US Forest Service	No timeline
Gorge 400 (MP 15 - 19.5) John Yeon to Wahclella	Closed	Oregon State Parks	No timeline
Gorge 400 (MP 19.5 - 22.5) Wahclella to Eagle Crk	Closed	US Forest Service	No timeline
Gorge 400 (MP 22.5 - 25) Eagle Cr to Cascade Locks	Closed	US Forest Service	No timeline
Gorge 400 (MP 25 - 35) Cascade Locks to Wyeth	Open	US Forest Service	
Gorton Creek Trail (#408)	Open	USFS CRGNSA & Mt Hood	
Green Point Ridge Trail (#418)	Open	USFS Mt. Hood NF	
Guy W. Talbot State Park (Latourell Falls)	Open	Oregon State Parks	
Herman Bridge Trail (#406E)	Open	USFS CRGNSA	
Herman Creek Cutoff Trail (#410)	Open	USFS Mt. Hood NF	
Herman Creek Trailhead and Trail (#406)	Open	USFS CRGNSA & Mt Hood	
Hist. Hwy State Trail: John Yeon to Toothrock	Open	Oregon State Parks	
Hist. Hwy State Trail: Toothrock to Eagle Crk	Open	Oregon State Parks	
Hist. Hwy State Trail: Eagle Crk to Cascade Locks	Open	Oregon State Parks	
Hist. Hwy State Trail: Wyeth to Lindsey Crk	Under Construction	Oregon State Parks	Summer 2019
Hist. Hwy State Trail: Starvation Crk to Lindsey Crk	Open	Oregon State Parks	
Hist. Hwy State Trail: Viento SP to Starvation Crk	Open	Oregon State Parks	
Hist. Hwy State Trail: Mosier Twin Tunnels	Open	Oregon State Parks	
Horsetail Creek Trail (#425)	Closed	USFS CRGNSA	No timeline
Horsetail Falls & Trail (#438)	Partial: Only open from Trailhead to Ponytail Falls.	USFS CRGNSA	No timeline for trail past Ponytail Falls
Indian Springs Trail (#435)	Closed	USFS Mt. Hood NF	
John B. Yeon State Scenic Corridor	Partial: Parking and paved HCRH State Trail open. Unpaved hiking trails and trail to Elowah Falls remain closed.	Oregon State Parks	No timeline yet for natural surface (hiking) trails to reopen.
Larch Mountain Trail (#441)	Lower trail open with hazards. Upper trail inaccessible due to snow gate.	USFS CRGNSA	
Lewis & Clark State Park	Open	Oregon State Parks	
Lower Punch Bowl Trail (#440B)	Closed	USFS CRGNSA	No timeline
Mitchell Point Trail (#417) - Mt. Hood NF	Open	USFS Mt. Hood NF	
Moffett Creek (#430)	Closed on both units	USFS CRGNSA & Mt Hood	No timeline
Mt Defiance Trail (#413)	Open	USFS CRGNSA & Mt Hood	
Mud Lake Trail (#406A)	Open	USFS Mt. Hood NF	
Multnomah Creek Way Trail (#444)	Legally open but inaccessible due to snow gate	USFS CRGNSA	Opens spring 2019
Multnomah Falls & Lodge	Open	USFS CRGNSA	
Multnomah Falls Overlook Spur Trail (#441A)	Open	USFS CRGNSA	
Multnomah Spur Trail (#446)	Legally open but inaccessible due to snow gate	USFS CRGNSA	Opens spring 2019

Nesmith Point Trail (#428)	Closed	USFS CRGNSA	No timeline
Nick Eaton Trail (#447)	Open	USFS CRGNSA & Mt Hood	
North Lake Trail (#423)	Open	USFS Mt. Hood NF	
Oneonta Trailhead & Trail (#424)	Closed (*except small portion of upper trail between Multnomah Spur and Trail #444 on Larch Mountain).	USFS CRGNSA	No timeline for Oneonta Trail or Gorge on historic highway.
Pacific Crest National Scenic Trail (#2000)	Open	USFS CRGNSA & Mt Hood	
Plateau Cutoff (#412)	Open	USFS Mt. Hood NF	
Portland Women's Forum State Scenic Viewpoint	Open	Oregon State Parks	
Rainy Lake Trail (#423A)	Open	USFS Mt. Hood NF	
Rainy Wahtum Trail (#409)	Open	USFS Mt. Hood NF	
Return Trail (#442)	Open	USFS CRGNSA	
Ridge Cutoff Trail (#437)	Open	USFS CRGNSA	
Rooster Rock State Park	Open	Oregon State Parks	
Ruckel Creek Trail (#405)	Partial: Closed within Ntl Scenic Area, but 1.5 miles on Benson plateau are open in Mt. Hood NF	USFS CRGNSA & Mt Hood	No timeline for CRGNSA segment
Shady Glen Trail (#402A)	Closed	USFS CRGNSA	No timeline
Shepperd's Dell State Natural Area	Closed	Oregon State Parks	No timeline
Sherrard Point Trail (#443)	Legally open but inaccessible due to snow gate	USFS CRGNSA	Opens spring 2019
Starvation Creek State Park	Open	Oregon State Parks	
Starvation Ridge Cut-off Trail (#414B)	Closed	Oregon State Parks	No timeline
Starvation Ridge Trail (#414)	Open	USFS CRGNSA	
Tanner Butte Trail (#401)	Closed on both units	USFS CRGNSA & Mt Hood	No timeline
Tanner Creek Trail (#431)	Closed on both units	USFS CRGNSA & Mt Hood	No timeline
Tanner Cutoff Trail (#448)	Closed	USFS Mt. Hood NF	No timeline
Tanner Springs Trail (#401E)	Closed	USFS Mt. Hood NF	No timeline
Tooth Rock Trailhead	Partial: Parking and paved HCRH State Trail open. Gorge 400 closed.	Oregon State Parks	No timeline yet for Gorge 400 section to reopen.
Vista Point Trail (#419)	Open	USFS CRGNSA	Late 2018
Wahclella Falls Trail (#436)	Closed	USFS CRGNSA	No timeline
Wahkeena Trail (#420)	Open	USFS CRGNSA	Late 2018
Wahtum Express (#406H)	Open	USFS Mt. Hood NF	
Warren Lake Trailhead & Trail (#417A)	Open	USFS Mt. Hood NF	
Wauna Viewpoint Trail (#402)	Closed	USFS CRGNSA	No timeline
Wyeth Trailhead	Open, but only provides access to Gorge 400	USFS CRGNSA & Mt Hood	

Wyeth Trail (#411)	Partial: A small connector piece of Wyeth Trail is open to Gorge 400 in the CRGNSA. Most of the trail is closed until south of the junction with Green Point Ridge Trail #418.	USFS CRGNSA & Mt Hood	No timeline for remaining parts of the trail
------------------------------------	---	-----------------------	--