

2018 PERSONAL USE DEAD FUELWOOD CUTTING REGULATIONS

NORTH KAIBAB RANGER DISTRICT

Where Can I Go to Collect Fuelwood?

The district Motor User Vehicle Map (MVUM), available free of charge at the District office, displays the signed and numbered roads on the district which can be driven with motorized vehicles. The current post/pole map does not show all the MVUM approved roads on the district since there are too many to display. Permittees are therefore encouraged to get a free copy of the MVUM to accompany the post/pole map.

Within the Pinyon Pine and Juniper (PJ) woodland timber (yellow colored areas on the post/pole map), do not drive motor vehicles beyond 30 feet from designated signed access road edges as shown on the post/pole map. Wood can still be gathered beyond the 30 foot distance on foot or on horseback; wood can be dragged or hauled back to the roadway by hand or with use of wheel barrows. Please travel on "signed" roads only in this PJ timber.

Within the Ponderosa Pine, Spruce, Fir and/or Aspen timber (white colored areas on the post/pole map "one-trip-in and one-trip-out" off-road motorized travel is permitted provided it is the most direct route in and out. Off-road travel is not permitted to "scout" or look for wood. One can look for wood by hiking, horseback, or visual observation from the road first, beyond the 30-foot mark from the roadway edge.

Within the Oak (yellow and sometimes white colored areas on the post/pole map), Permittees should follow the above mentioned rules depending on which area they are in.

What Can I Cut?

- In approved un-restricted areas, any species of wood of any diameter already lying on the ground may be cut up and removed.
- Standing dead tree diameters are measured at Diameter at Breast Height (DBH), which is defined as the diameter of a tree 4 ½ feet above the ground. If you are on a slope, this is 4 ½ feet above the ground on the uphill side.
- Restrictions on cutting standing dead trees are shown in the table below:

Species	Size Restrictions for Cutting Standing Dead Trees
Ponderosa Pine, Fir, or Spruce	Less than 12 inches DBH, any height OR Less than 15 feet total height, any diameter
Pinyon Pine	Less than 10 inches DBH, any height OR Less than 12 feet total height, any diameter
Juniper	Any tree
Oak	Less than 8 inches DBH, any height

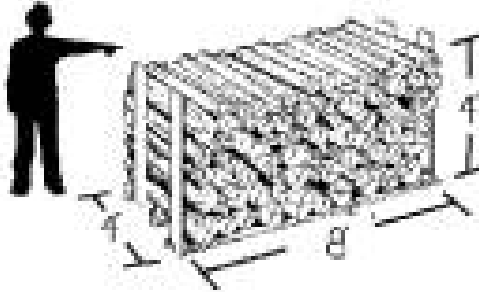
If you are not certain of height or stem size of a standing dead tree, do not cut the tree, as larger dead standing trees are very valuable for wildlife & the forest ecosystem.

2018 PERSONAL USE DEAD FUELWOOD CUTTING REGULATIONS

What Can I Cut? (Continued)

- All fuelwood must be cut into lengths of 4 feet or less before loading it into your vehicle/trailer.
- Each permit is good for up to 10 cords of wood.

HOW TO MEASURE A CORD OF WOOD? The amount of wood removed is measured in Cords. A standard Cord is 4x4x8 feet. A standard size pickup truck bed filled just above the top (if no side racks) is approximately ½ cord.



Where/What Not to Cut:

- Any wood found in commercial timber sale and other contract areas, administrative sites, study areas, or developed recreation sites, including developed campgrounds, picnic areas, trailheads and interpretive sites.
- Trees with signs, tags or paint
- Any wood where it would result in damage to any improvements such as buildings, fences, roads, power lines, etc..
- Additional unforeseen restricted no cutting or gathering areas and/or periods may occur on the district due to environmental conditions such as, but not limited to: **high fire danger; planned or unplanned fire ignitions; etc.** Please check with the North Kaibab District Office for current restriction information at **928-643-7395**.
- **DON 'T DRIVE OFF ANY ROAD WHEN TRAVEL WILL DAMAGE SOILS**, particularly when ground conditions are thawed, wet or muddy. Off-road travel in meadows (such as Pleasant Valley and DeMotte) is prohibited.
- The use of Heavy Equipment (Tractors, skidders, forklifts, or track driven machinery) is **NOT ALLOWED** for gathering or loading wood off-road with this permit.

Fire Precautions

- Power saws must have a muffler in good condition and be equipped with a stainless steel screen (spark arrestor) with a maximum gap/opening of 0.23 inches. Keep your shovel and fire extinguisher available at all times.
- Never set a hot powersaw on dry flammable materials. Place it on bare ground, a rock or a tree stump.
- Prior to starting saw, move it at least 10 feet away from where it was fueled and away from gasoline vapors.
- Remain in the area at least 30 minutes after you have completed cutting, to insure that a stray spark from your saw has not started a fire.
- If you start a warming and/or cooking fire, please extinguish it completely with water before you leave.

What if I Encounter a California Condor While Gathering Fuelwood?

Permittees are required to protect condors by ensuring no garbage, toxic materials or open fluid containers are accessible in the open. If condors are seen, please do not interact with them; and you are asked to contact the North Kaibab Ranger District at (928) 643-7395 to let the District Biologist know when and where the condors were sighted.

2018 PERSONAL USE DEAD FUELWOOD CUTTING REGULATIONS

How Do I Document Fuelwood Removal?

Firewood cutters must physically attach a Load Tag to each ¼ cord or portion of firewood in a location visible from the rear of the vehicle before moving the vehicle from the firewood collection site.

- There are four tags for each cord of wood issued on the permit. Each tag equals ¼ cord or less and is numbered and corresponds with a load ticket number on the permit.
- Before leaving the harvest site, a tag for each ¼ cord or smaller portion of wood in the load must be physically attached to a piece of wood in the load (i.e. ¼ cord or less=1 tag, ¼-½ cord=2 tags, ½-¾ cord=3 tags, etc.). Use a nail, staple, tack, or other secure attachment device, that will remain attached during transport.
- Each tag must have the month, day of the week, and A.M/P.M. punched out, with a pen, hole punch, etc., prior to attaching it to the load.
- Permittees must also fill out the Product Quantity Removal Record in INK on the permit prior to leaving the harvest area. The quantity in this record must correspond with the number of tags used.

Questions? Please contact the District office by phone at **928-643-7395** or visit us at 430 S. Main Street in Fredonia, Arizona (open 8:00 am - 4:30 pm Mon.-Fri.). As available, updates and regulations can be found at our Kaibab National Forest website found at: www.bit.ly/KNFfuelwood

PACK IT IN PACK IT OUT... Please remove all trash!!! Help Keep our Forest Beautiful!!!



**PLEASE HELP PROTECT OUR RESOURCES!
BE SAFE AND ENJOY YOUR FUELWOOD GATHERING EXPERIENCE!**