

UNITED STATES DEPARTMENT OF AGRICULTURE  
FOREST SERVICE  
COCONINO NATIONAL FOREST  
MOGOLLON RIM RANGER DISTRICT  
TEMPORARY AREA CLOSURE DUE TO FIRE

Pursuant to 16 USC 551 and 36 CFR 261.50 (a) and (b), the following acts are prohibited in the area described in this order, and depicted on the attached map hereby incorporated into this order as Exhibit A, all within the Mogollon Rim Ranger District, Coconino National Forest, Coconino County, Arizona:

**PROHIBITIONS:**

1. Going into or being upon the restricted area, including all roads and trails within the restricted area. **36 CFR 261.53(e), 36 CFR 261.54 (a) and 261.55(a)**

**EXEMPTIONS:**

Pursuant to 36 CFR 261.50(e), the following persons are exempt from this order:

1. Persons with a Forest Service permit specifically authorizing the otherwise prohibited act or omission.
2. Any Federal, State, or Local Law Enforcement Officer or member of an organized rescue or fire fighting force in the performance of an official duty.
3. For the purpose of non-motorized travel of the Arizona National Scenic Trail (AZNST), any person may use National Forest Service Road (NFSR) 751 to Trail #87, Trail #87 to NFSR 123A, NFSR 123A to the intersection of NFSR 123, then continuing on Trail #141 to the Forest Boundary.

**AREA Described:**

The Restricted Area begins at National Forest Service Road (NFSR) 751 where it intersects with State Route 87, NFSR 751 is closed south until it intersects the Arizona National Scenic Trail (Trail #87). The closure boundary continues south along AZ Trail #87 and NFSR 123A until it intersects NFSR 123. The closure boundary continues south on NFSR 123 until it intersects NFSR 300. NFSR 123 and 123A are both closed. The closure boundary continues east on NFSR 300 until it intersects NFSR 137. NFSR 300 is closed from the NFSR 123 intersection to the NFSR 137 intersection. The closure boundary continues north on NFSR 137 to the intersection with NFSR 137B. NFSR 137 is closed from the NFSR300 intersection to the NFSR 137B intersection. The closure boundary continues northeast on NFSR 137B until it intersects the southern boundary of private property in Township 14 North (T14N) Range 12 East (R12E) section 15. The closure boundary continues east and then north along the private boundary in section 15 until it intersects with the forest boundary. The closure boundary continues north along the forest boundary until it intersects with Township 16N (T16N) Range 13 East (R13E) section 28, following the section boundary north to the northeast corner of Township 16N (T16N) Range 13 East (R13E) section 21. The closure boundary continues due west along the northern boundary of section 21, 20, and 19 to the intersection with State Route 87. The closure boundary then continues south along State Route 87 until it intersects NFSR 751.

Order Number: 04-18-08

Order Number: 04-18-08

UNITED STATES DEPARTMENT OF AGRICULTURE  
FOREST SERVICE  
This area is located in T16N – T12N and R10E – R12E.  
COCONINO NATIONAL FOREST  
MORGANTHAU RIM LANDER DISTRICT

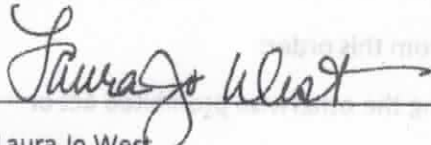
**PURPOSE:**

For the protection of public health and safety due to Tinder Fire.

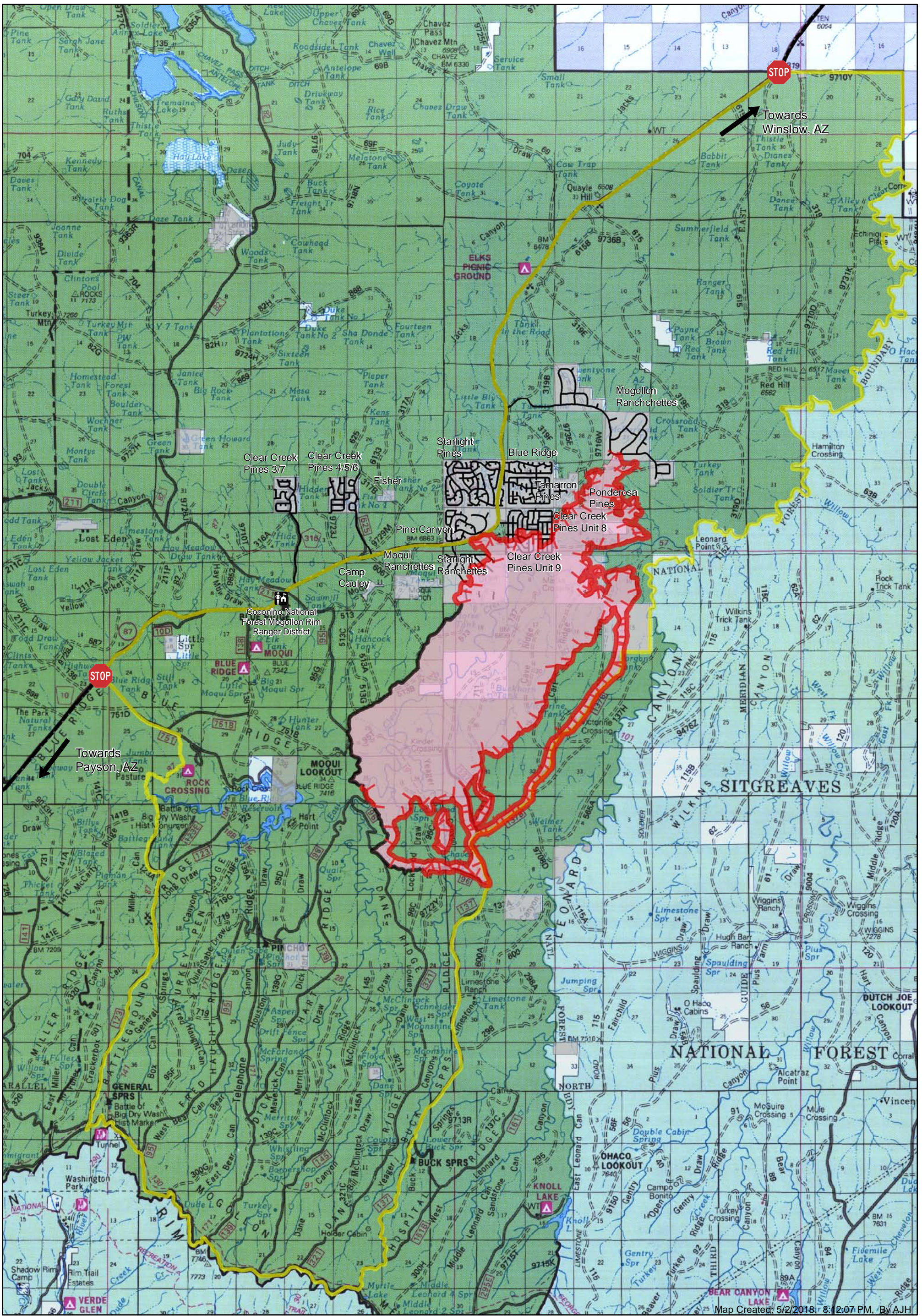
**IMPLEMENTATION:**

1. This order shall be in effect when signed and shall remain in effect until rescinded.
2. This order supersedes, rescinds, and replaces any previous orders prohibiting the same acts covered by this order.
3. Any violation of these prohibitions is punishable by a fine of not more than \$5,000.00 for individuals and \$10,000.00 for organizations and/or imprisonment for not more than six (6) months. [16 USC 551, 18 USC 3571(b)(6), 18 USC 3581(b)(7)].

Signed in Flagstaff, Arizona this 1<sup>st</sup> day of May, 2018.



Laura Jo West  
Forest Supervisor  
Coconino National Forest



Map Created: 5/2/2018 8:12:07 PM, By AJH



**Tinder Fire**  
**Public Information Map**  
**AZ-COF-000285**  
 Date: 5/03/2018  
 GIS Acres 12,467  
 5/2/2018 13:00  
 North American 1983 UTM Zone 12N

- Uncontrolled Fire Edge
- Tinder Fire
- Controlled Fire Line
- Forest Service Closure Area
- Hwy 87 Closure
- Private Ownership

