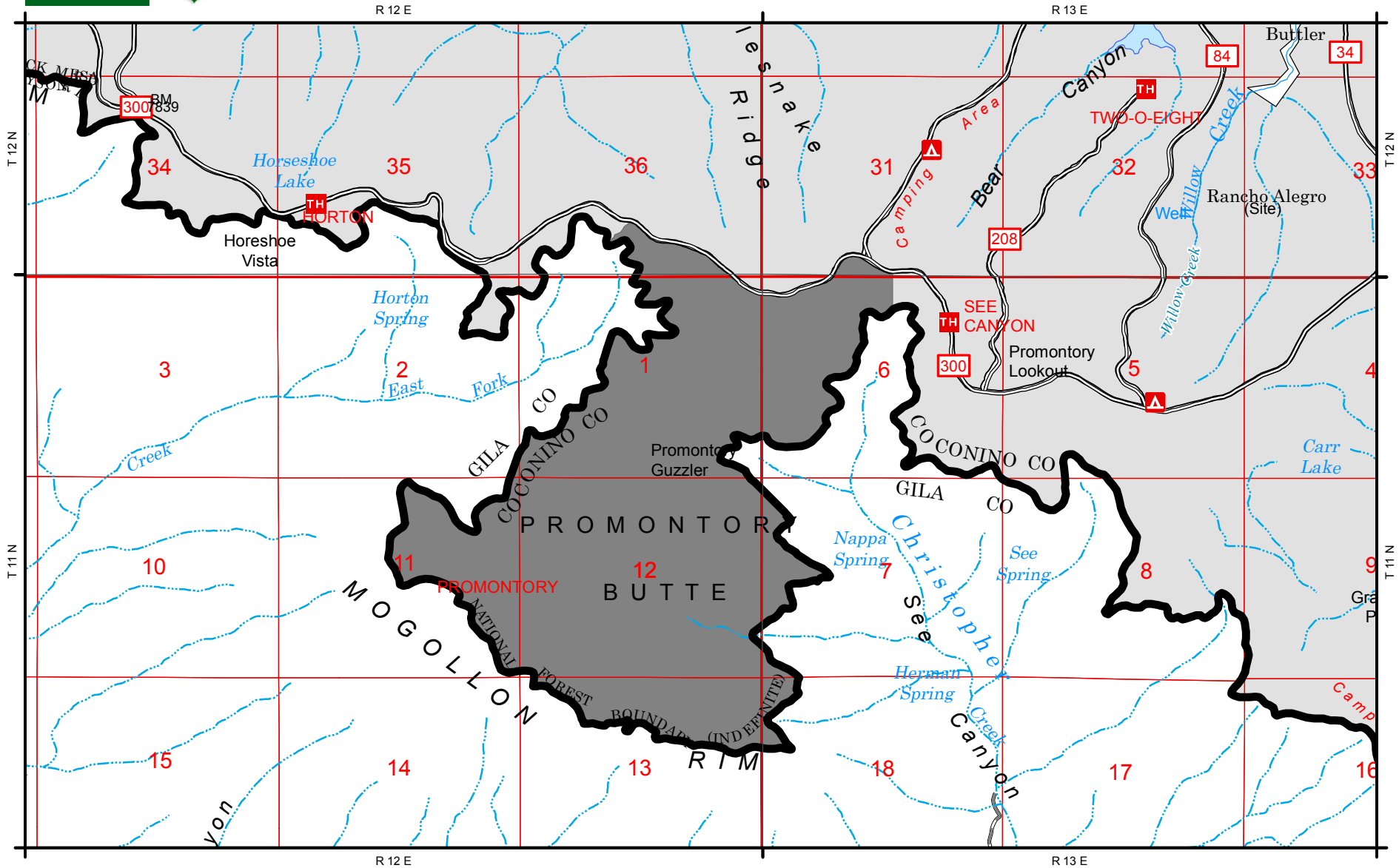




Promontory Butte Area Closure

Apache-Sitgreaves National Forests - Black Mesa Ranger Districts



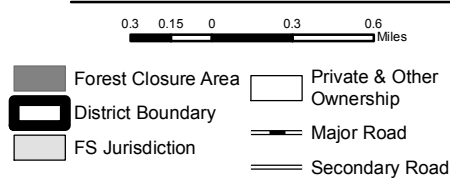
Forest Order Information

Order Number: 01-18-607
 Exhibit: A
 Forest/District: Black Mesa RD

Disclaimer

The USDA Forest Service makes no warranty, expressed or implied regarding the data displayed on this map, and reserves the right to correct, update, modify, or replace this information without notification.

Legend



ARIZONA Coconino County

