

ORDER NO. 18-05-006
FIRE RESTRICTIONS
KLAMATH NATIONAL FOREST

Pursuant to 16 USC 551 and 36 CFR 261.50(a) and (b), and to provide for public safety and protect natural resources, the following acts are prohibited within the Klamath National Forest. This Order is effective from July 9, 2018, through October 15, 2018.

1. Building, maintaining, attending or using a fire, campfire, or stove fire, except in the areas listed below.
 - a. Designated Recreation Sites, as listed on Exhibit A and shown on the attached map.
 - b. Trinity Alps Wilderness.
 - c. Siskiyou Wilderness.
 - d. Marble Mountain Wilderness.
 - e. Russian Wilderness.

36 CFR 261.52(a).

2. Smoking, except within an enclosed vehicle or a building, within the Designated Recreation Sites, as listed on Exhibit A and shown on the attached map, or while stopped in an area at least three feet in diameter that is barren of all flammable material.
36 CFR 261.52(d).

3. Welding, operating an acetylene torch or other torch with an open flame.
36 CFR 261.52(i).

4. Operating an internal combustion engine, except on National Forest System roads or trails, or within the Designated Recreation Sites, as listed on Exhibit A and shown on the attached map.
36 CFR 261.52(h).

Pursuant to 36 CFR 261.50(e), the following persons are exempt from this Order:

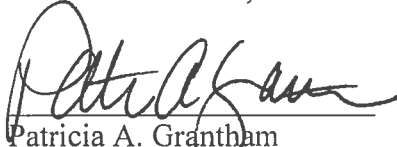
1. Persons with a permit from the Forest Service specifically authorizing the otherwise prohibited act or omission. Persons with a valid California Campfire Permit are not exempt from the prohibitions listed above. However, persons with a valid California Campfire Permit may use a portable lantern or stove that uses a gas, jellied petroleum, or pressurized liquid fuel and has a shut-off valve.

2. Any Federal, State or local officer, or member of an organized rescue or fire fighting force in the performance of an official duty.

These prohibitions are in addition to the general prohibitions in 36 CFR Part 261, Subpart A.

A violation of these prohibitions is punishable by a fine of not more than \$5,000 for an individual or \$10,000 for an organization, or imprisonment for not more than six months, or both. 16 USC 551 and 18 USC 3559, 3571 and 3581.

Executed in Yreka, California this 5th day of July, 2018.



Patricia A. Grantham

Forest Supervisor

Klamath National Forest

EXHIBIT A
KLAMATH NATIONAL FOREST
DESIGNATED RECREATION SITES
ORDER NO. 18-05-006

Goosenest Ranger District

DEER MTN SNOWMOBILE PARK
FOUR CORNERS SNOWMOBILE PARK
JUANITA LAKE DAY USE AREA, CAMPGROUND,
AND GROUPSITE
MARTIN'S DAIRY CAMPGROUND
MARTIN'S DAIRY HORSE CAMPGROUND
ORR LAKE CAMPGROUND
SHAFTER CAMPGROUND

Happy Camp and Oak Knoll Ranger District

BEAVER CREEK CAMPGROUND
CURLY JACK CAMPGROUND
FORT GOFF CAMPGROUND
GRIDER CREEK CAMPGROUND
GROUSE GAP SHELTER
MT. ASHLAND CAMPGROUND
NORCROSS TRAILHEAD
POKER FLAT TRAILHEAD
SARAH TOTTEN CAMPGROUND
SULPHUR SPRINGS CAMPGROUND
TREE OF HEAVEN CAMPGROUND

Salmon River and Scott River Ranger District

BIG FLAT CAMPGROUND
CARTER MEADOWS GROUP CAMPGROUND
EAST FORK CAMPGROUND
HIDDEN HORSE CAMPGROUND
HOTELLING CAMPGROUND
IDLEWILD CAMPGROUND
INDIAN SCOTTY CAMPGROUND AND GROUP SITE
JONES BEACH PICNIC AREA
KANGAROO LAKE CAMPGROUND AND PICNIC
AREA
LOVER'S CAMP CAMPGROUND
MATTHEWS CREEK CAMPGROUND
MULE BRIDGE CAMPGROUND
RED BANK CAMPGROUND
TRAIL CREEK CAMPGROUND

Ukonom Ranger District

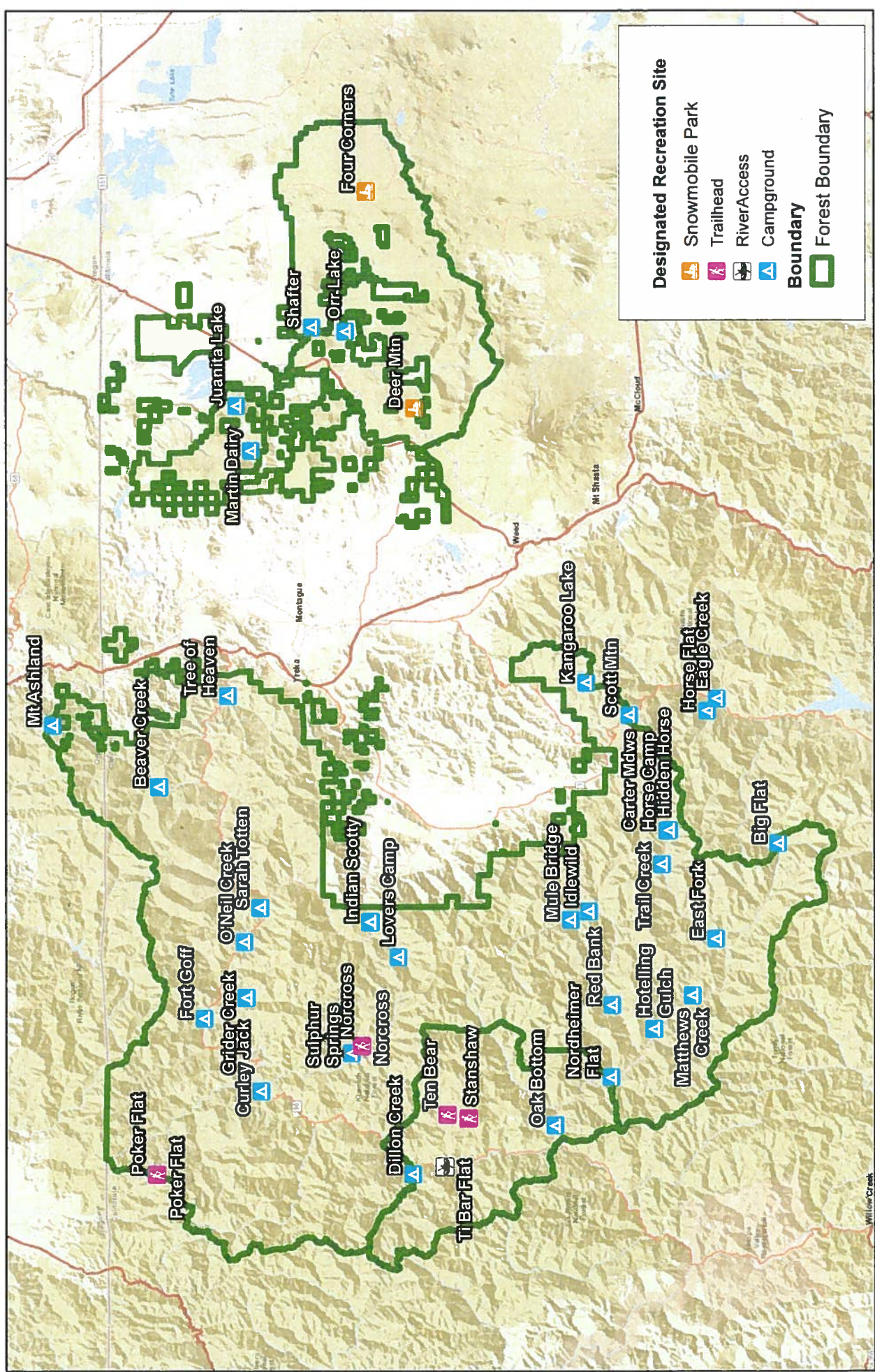
DILLON CREEK CAMPGROUND
NORDHEIMER FLAT CAMPGROUND
OAK BOTTOM CAMPGROUND
STANSHAW TRAILHEAD
TEN BEAR TRAILHEAD
TI BAR FLAT RIVER ACCESS



Fire Restrictions

Klamath National Forest

Order Number 18-05-006



Designated Recreation Site

- Snowmobile Park
- Trailhead
- River Access
- Campground

Boundary

- Forest Boundary

