


**File Code:** 2670  
**Route To:** File

**Date:** July 17, 2018

**Subject:** Forest Order No. 05-15-51-18-13 – Ferguson Fire Closure  
**From:** Dean A Gould, Forest Supervisor 

This document explains my rationale and the regulatory basis for implementing an Order closing the area, roads, and trails in the vicinity of the Ferguson Fire on the Sierra National Forest.

On the afternoon of July 13, 2018, a fire began near Highway 140 and Ferguson Ridge on the Bass Lake Ranger District. By July 17, 2018, the Ferguson Fire had grown from its original size to more than 12,525 acres and is 5% contained.

The purpose of this closure is to provide safety to the public and for the firefighters who are engaged in fire suppression and rehabilitation efforts within the Ferguson Fire Closure Area, as shown on Exhibits A and B. Closure of the fire area is necessary to help ensure that no one is injured within or near the active fire perimeter. All National Forest System roads and trails, within closure area will be closed due to fire suppression and rehabilitation activities that create a hazard to the public which includes the use of heavy equipment, the falling of hazard trees that were weakened by the fire and the construction, rehabilitation, and maintenance of fuel breaks. This closure will remain in effect until the fire is declared out.

Scoping regarding this temporary area and road closure involved discussions with cooperators including the incident management team who had no objections. I have concluded that this decision may be categorically excluded from documentation in an Environmental Impact Statement (EIS) or Environmental Assessment (EA) under the National Environmental Policy Act. This action falls within the category identified in 36 CFR 220.6(d)(1) - prohibitions to provide short-term resource protection or to protect public health and safety - and does not require documentation in a decision memo, decision notice, or record of decision. I have determined that there are no extraordinary circumstances associated with this temporary closure. Implementation of the decision may begin immediately.

**Ferguson Fire Information:**

Public Information Line: (530) 377-6221

Media Information Line: (530) 377-6221

Incident Website: <https://inciweb.nwcg.gov/incident/5927/>

Email Updates (Sign-Up): [www.tinyurl.com/fergusonfire](http://www.tinyurl.com/fergusonfire)



Forest Order No. 05-15-51-18-13  
Sierra National Forest  
Ferguson Fire Closure

Pursuant to 16 USC 551 and 36 CFR 261.50(a) and (b), and to provide for public safety, the following acts are prohibited within the Sierra National Forest. This Order is effective from July 18, 2018, until the Ferguson Fire is declared out.

1. Going into or being upon National Forest System lands within the Ferguson Fire Closure Area. The boundary of the Ferguson Fire Closure Area begins at the intersection of Highway 140 and the Sierra National Forest Boundary, then continues south and east along the Sierra National Forest Boundary to its intersection with Forest Road No. 6S24, then continues east and north along the northern edge of Forest Road No. 6S24 to its intersection with the western edge of Highway 41, then continues north along the western edge Highway 41 to its intersection with the Yosemite National Park Boundary, then continues northeast along the Yosemite National Park Boundary to its intersection with the Merced River near the Red Bud Picnic Area, then continues west along the Sierra National Forest Boundary back to its starting point, as shown on Exhibits A and B. 36 CFR 261.52(e).
2. Being on any National Forest System road within the Ferguson Fire Closure Area, as shown on Exhibits A and B. 36 CFR 261.54(e).
3. Being on any National Forest System trail within the Ferguson Fire Closure Area, as shown on Exhibits A and B. 36 CFR 261.55(a).

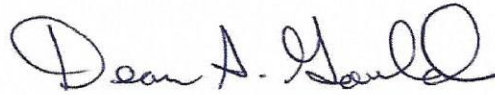
Pursuant to 36 CFR 261.50(e), the following persons are exempt from this Order:

1. Persons with a permit from the Forest Service specifically authorizing the otherwise prohibited act or omission.
2. Any Federal, State, or local officer or member of an organized rescue or fire fighting force in the performance of an official duty.

These prohibitions are in addition to the general prohibitions contained in 36 CFR Part 261, Subpart A.

A violation of these prohibitions is punishable by a fine of not more than \$5,000 for an individual or \$10,000 for an organization, or imprisonment for not more than six months, or both. 16 USC 551 and 18 USC 3559, 3571, and 3581.

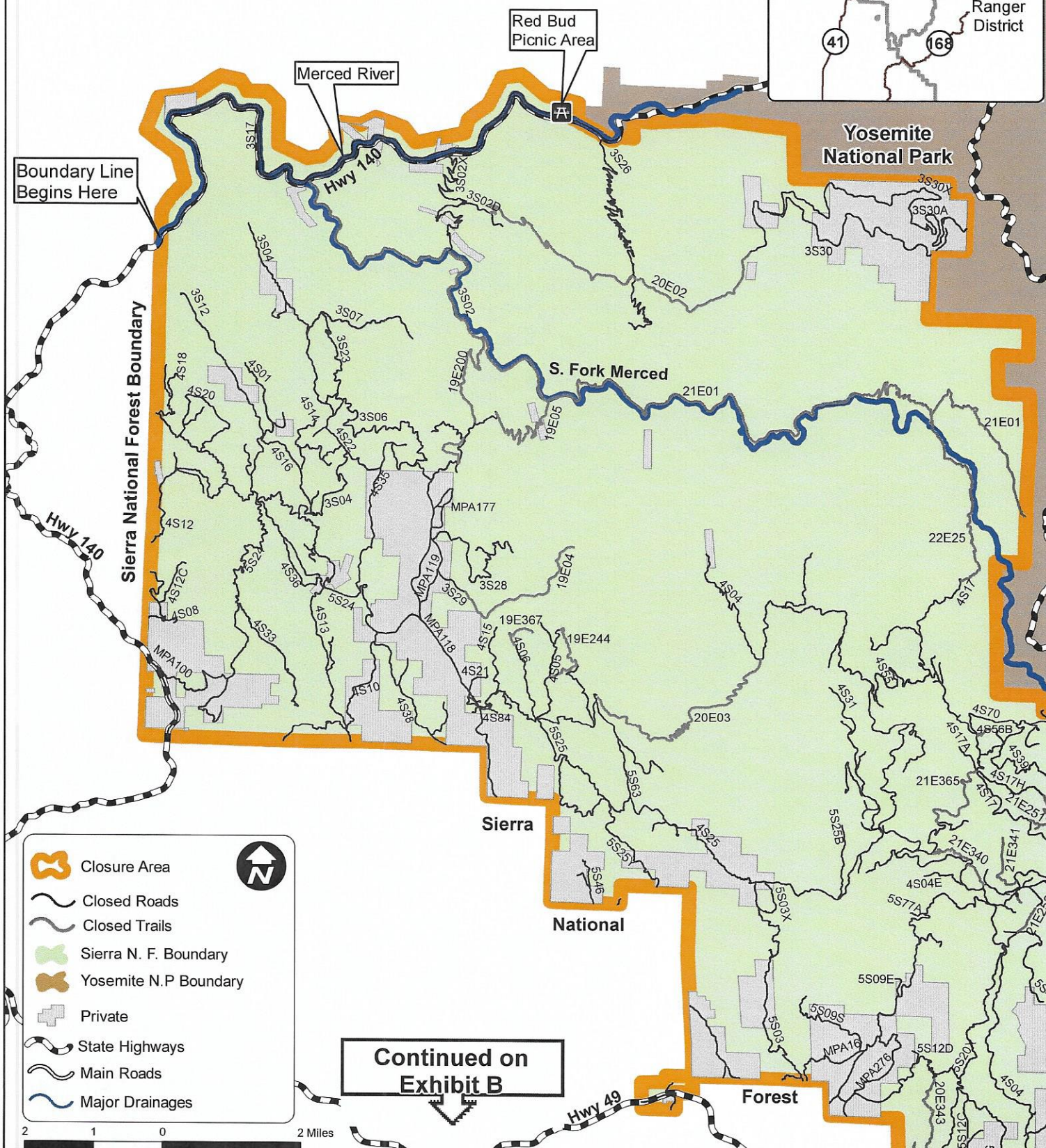
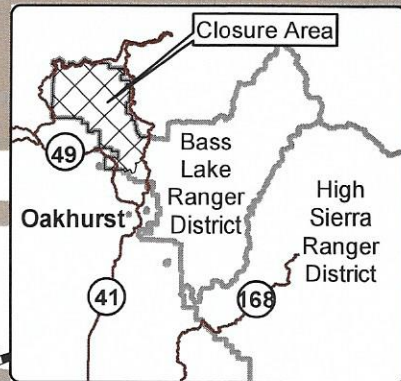
Executed in Clovis, California on July 17, 2018.

A handwritten signature in cursive script that reads "Dean A. Gould". The signature is written in black ink and is positioned above a horizontal line.

---

DEAN A GOULD  
Forest Supervisor

05-15-51-18-13  
 Sierra National Forest  
 Ferguson Fire Closure  
 Exhibit A

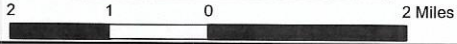


Boundary Line Begins Here

- Closure Area
- Closed Roads
- Closed Trails
- Sierra N. F. Boundary
- Yosemite N.P. Boundary
- Private
- State Highways
- Main Roads
- Major Drainages

2 Miles

Continued on  
 Exhibit B



Continued on Exhibit A

