

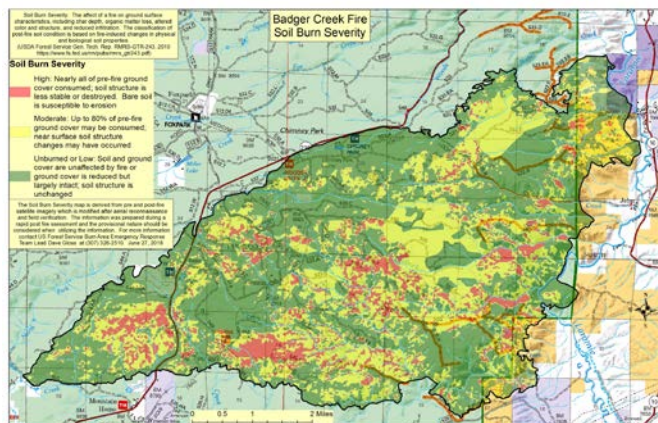
# Medicine Bow-Routt National Forests Burned Area Emergency Response (BAER) Post-Fire BAER Assessment



July 23, 2018

BAER Information: (415) 881-1871

## BADGER CREEK FIRE – BAER SOIL BURN SEVERITY MAP RELEASED



Burned Area Emergency Response (BAER) specialists recently completed their data gathering and verification field work of the Badger Creek Fire burn area and finalized its Soil Burn Severity map. Soil Burn Severity levels are Unburned, Low, Moderate, and High.

The map shows that in the fire area, approximately 54% of the 20,302 acres analyzed by the BAER team within the Badger Creek Fire is considered unburned or low soil burn severity, while 36% sustained a moderate soil burn severity, and 10% burned at a high soil burn severity.

BAER post-fire assessment teams use the soil burn severity data to identify if there are areas of concern where increased soil erosion, accelerated surface water run-off, and debris flows have the potential to impact human life and safety, property, and critical natural and cultural resources from rain events. Forest Service BAER teams typically consist of scientists and specialists that consider emergency stabilization options for those critical resources.

BAER specialists expect erosion and run-off within the Badger Creek Fire area to increase as a result of the fire because 46% of the burned area experienced moderate or high soil burn severity. In specific areas that experienced moderate to high soil burn severity, there could be concern for run-off from steep hillslopes and resultant increases in post-fire erosion, flooding, and debris flows.

The Badger Creek Fire soil burn severity BAER map can be downloaded at the interagency "[Rocky Mountain Region-2018 Post-Fire BAER](#)" InciWeb site as a JPEG or PDF version under the "maps" tab.

A "[Field Guide for Mapping Post-Fire Soil Burn Severity](#)" can help with interpreting the map and can be found online at [http://www.fs.fed.us/rm/pubs/rmrs\\_gtr243.pdf](http://www.fs.fed.us/rm/pubs/rmrs_gtr243.pdf).

**SPECIAL NOTE:** Everyone near and downstream from the burned areas should remain alert and stay updated on weather conditions that may result in heavy rains over the burn scars. Flash flooding may occur quickly during heavy rain events. Current weather and emergency notifications can be found at the **National Weather Service** website: [www.weather.gov/pub/](http://www.weather.gov/pub/).

Rocky Mountain Region 2018 Post-Fire BAER Assessment information is available at <https://inciweb.nwcg.gov/incident/5928/>.

