

YOU'RE INVITED!

SAN GABRIEL CANYON & CRYSTAL LAKE

RECREATION PLANNING WORKSHOP

Thursday, November 15th, 7:00 - 8:30pm

Saturday, November 17th, 11:00am - 12:30pm

The public is invited to provide input on the future of recreation resources in the San Gabriel Canyon and Crystal Lake Recreation Area. The San Gabriel Canyon area encompasses 44 square miles that surround the Highway 39 corridor between Sierra Madre Avenue in Azusa and the Angeles Crest Highway. Crystal Lake Recreation Area is located 26 miles up Highway 39 north of Azusa. During the workshop we will discuss potential recreation improvement opportunities.

The Angeles National Forest and the Watershed Conservation Authority (WCA) are developing the Recreation Master Plan for the San Gabriel Canyon Area and the Crystal Lake Recreation Area Redevelopment Plan through a collaborative partnership.

Thursday, November 15, 2018

7:00PM – 8:30PM

Angeles National Forest Headquarters, Training Center
701 N Santa Anita Ave
Arcadia, CA 91006

DIRECTIONS TO ANGELES NATIONAL FOREST HEADQUARTERS:
From the 210 Freeway. Exit on N. Santa Anita Avenue and head south. In 50 feet, make a right into the Angeles National Forest Headquarters entry road.

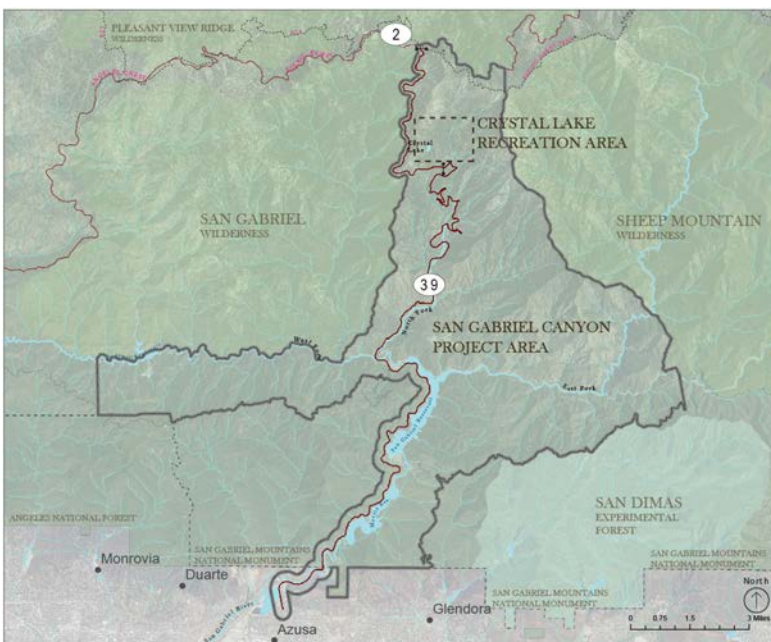
Via Metro Goldline. Take Metro Goldline to the Arcadia Station. ANF Headquarters is 0.5 mile northwest of the station.

Saturday, November 17, 2018

11:00AM – 12:30PM

River Wilderness Park
100 Old San Gabriel Canyon Road
Azusa, CA 91702

DIRECTIONS TO RIVER WILDERNESS PARK:
From the 210 Freeway. Exit on Azusa Avenue (Hwy 39) and go north for four miles. Continue past Foothill Boulevard, Sierra Madre Avenue, and the U.S. Forest Station and turn right onto Old San Gabriel Canyon Rd.



For additional information or if you would like to request translation services, please call or e-mail:

Alex Linz, Project Manager
Watershed Conservation Authority
100 N. Old San Gabriel Canyon Road
Azusa, CA 91702
626-815-1019 x105
alinz@wca.ca.gov

