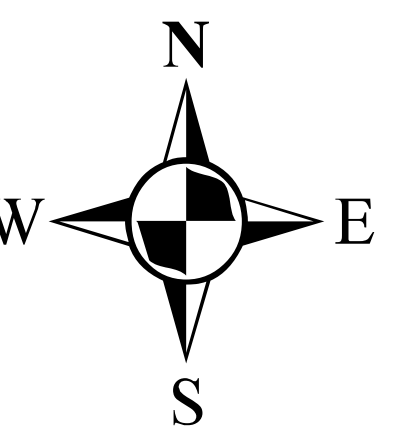
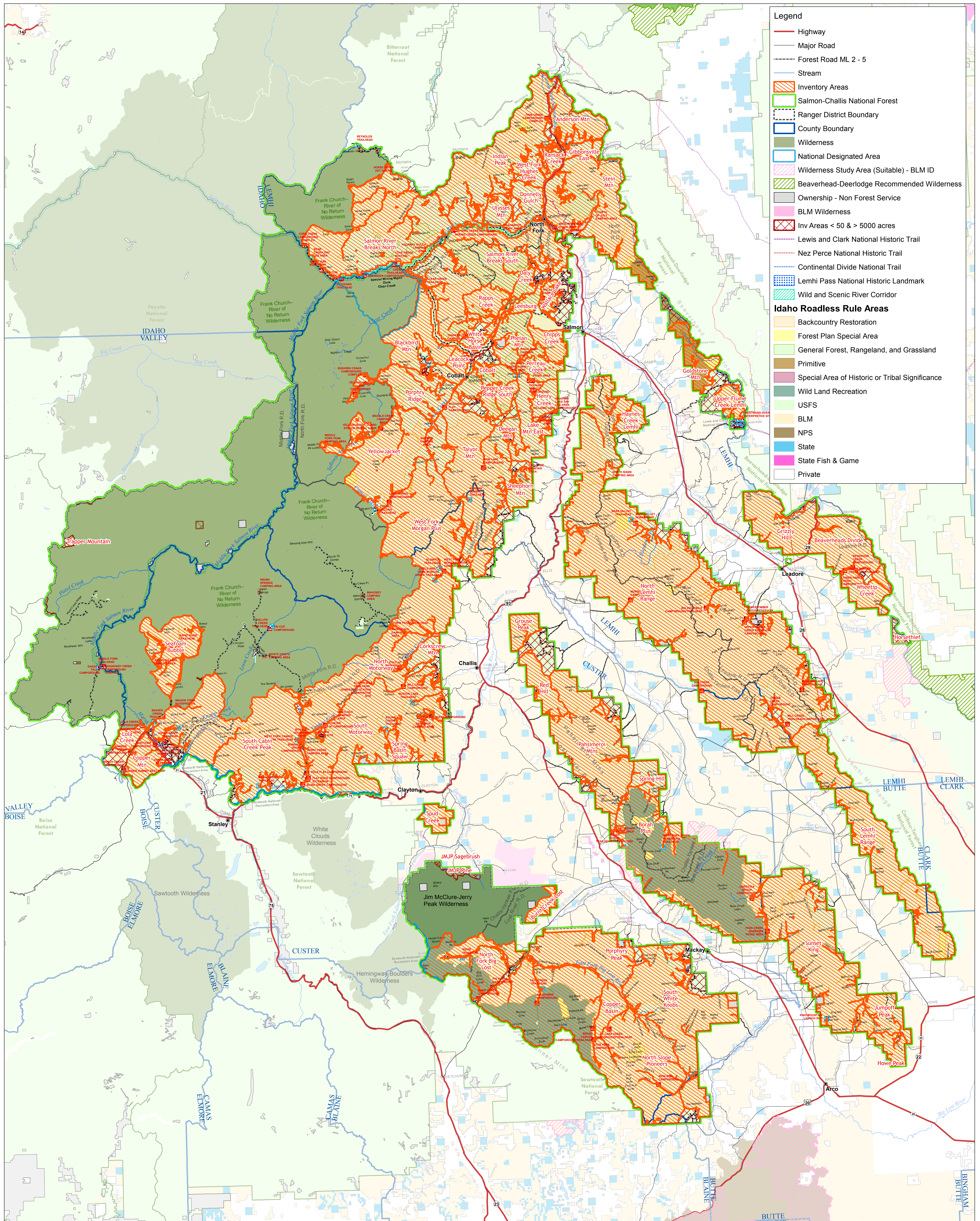




Salmon - Challis National Forest

Wilderness Inventory and Evaluation Process

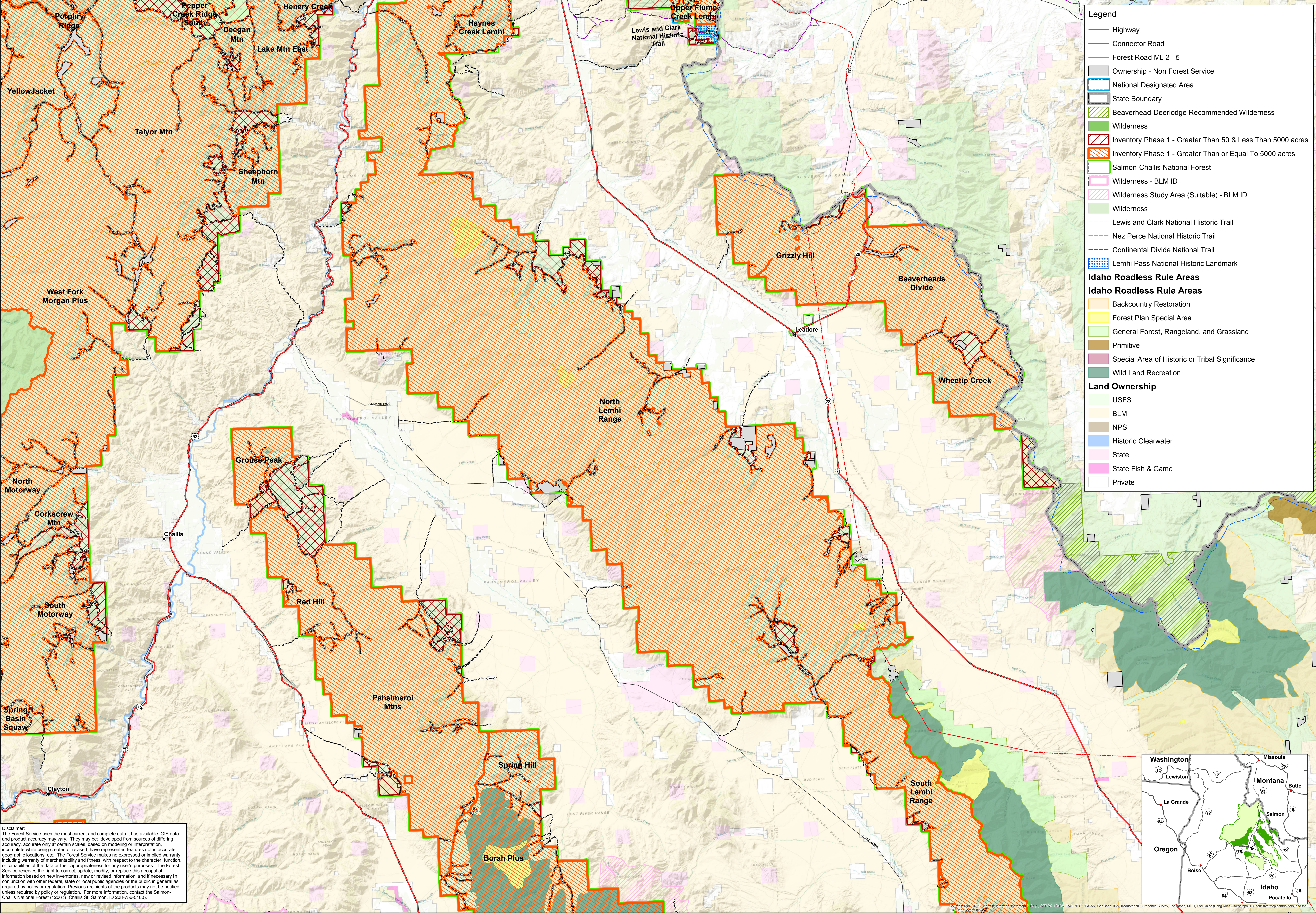
Inventory Areas Step I





Inventory #1

Leadore R.D. & East Challis-Yankee Fork R.D.



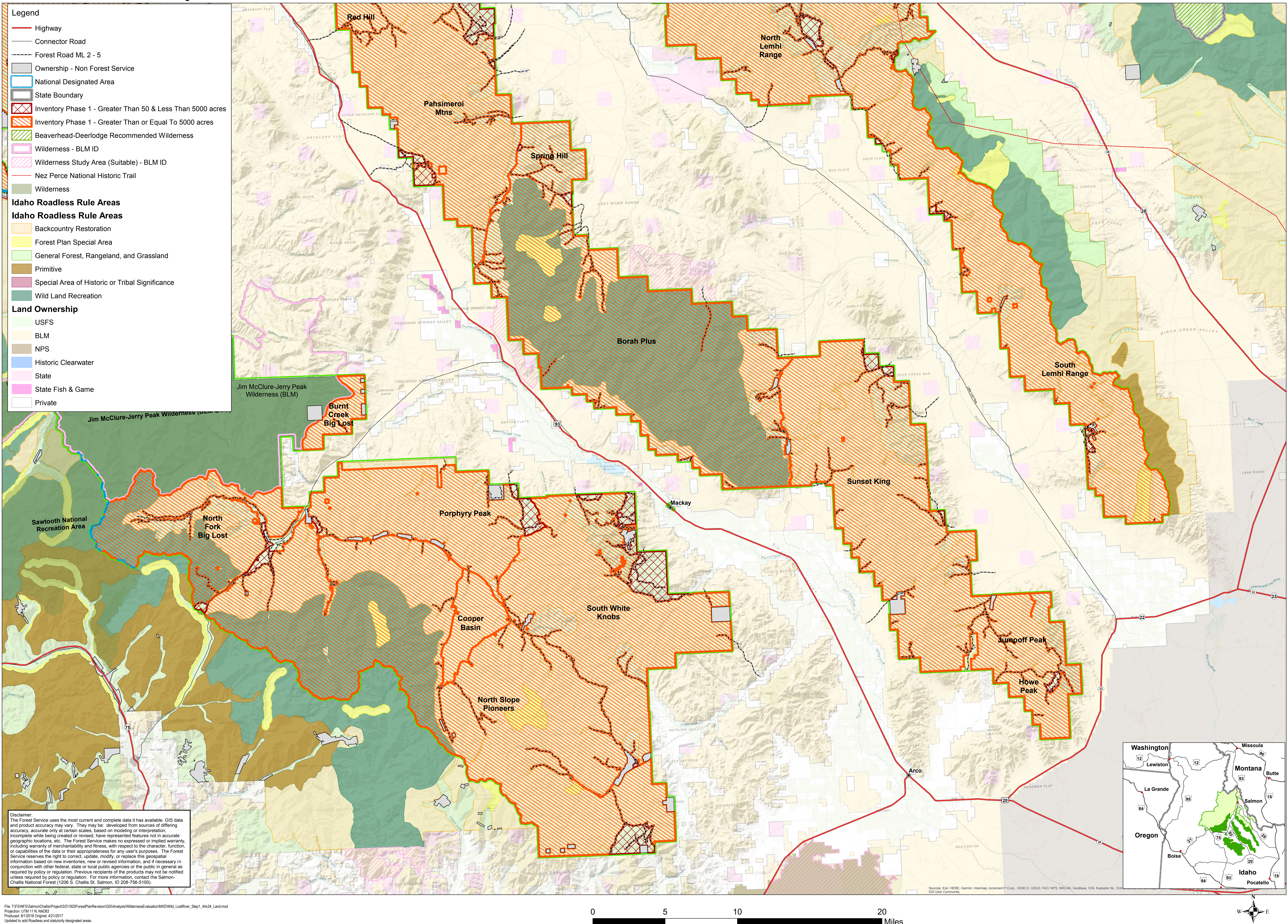


Wilderness Inventory and Evaluation Process



Inventory #1

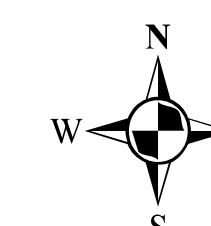
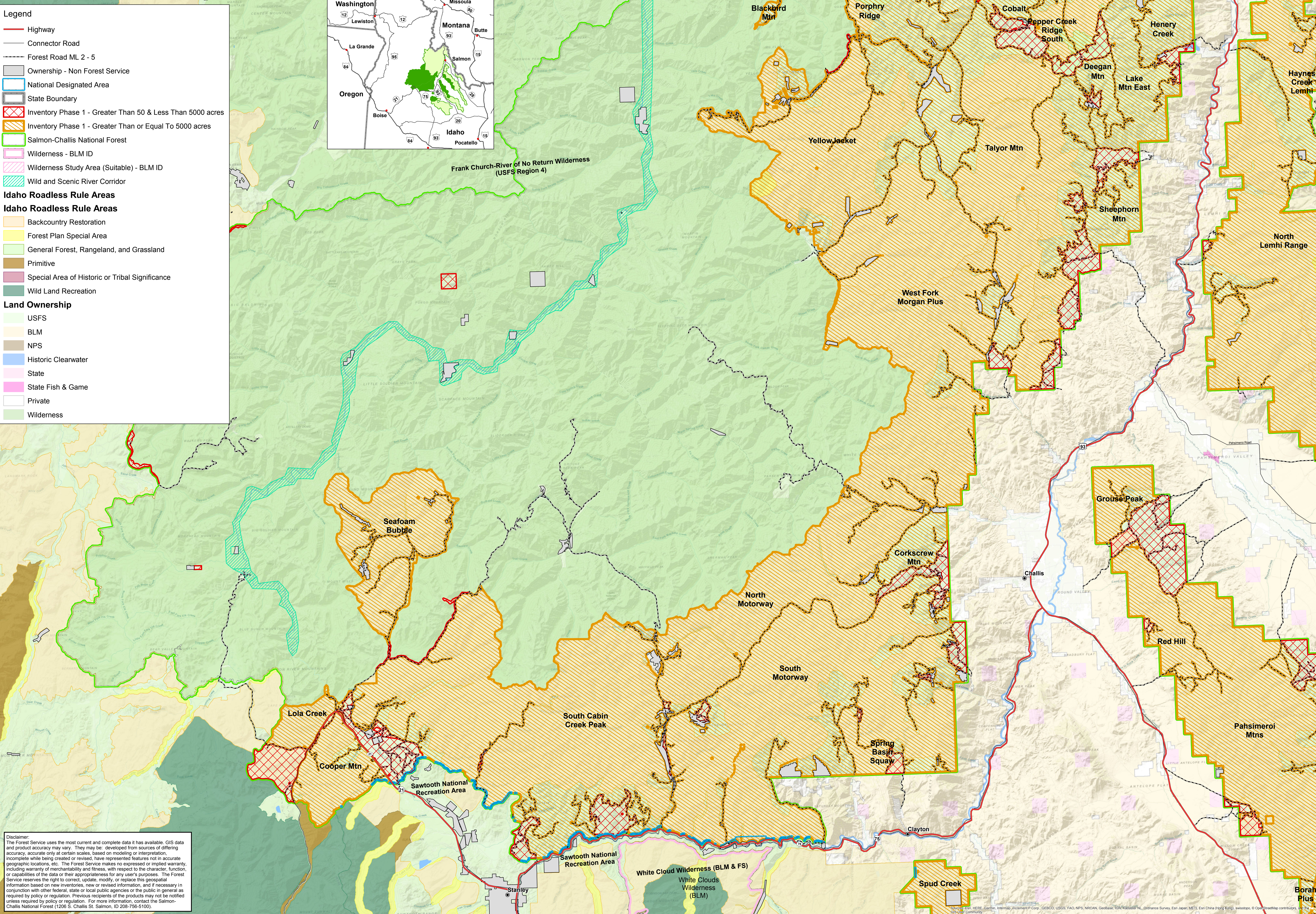
Lost River R.D. & South Challis-Yankee Fork R.D.





Inventory #1

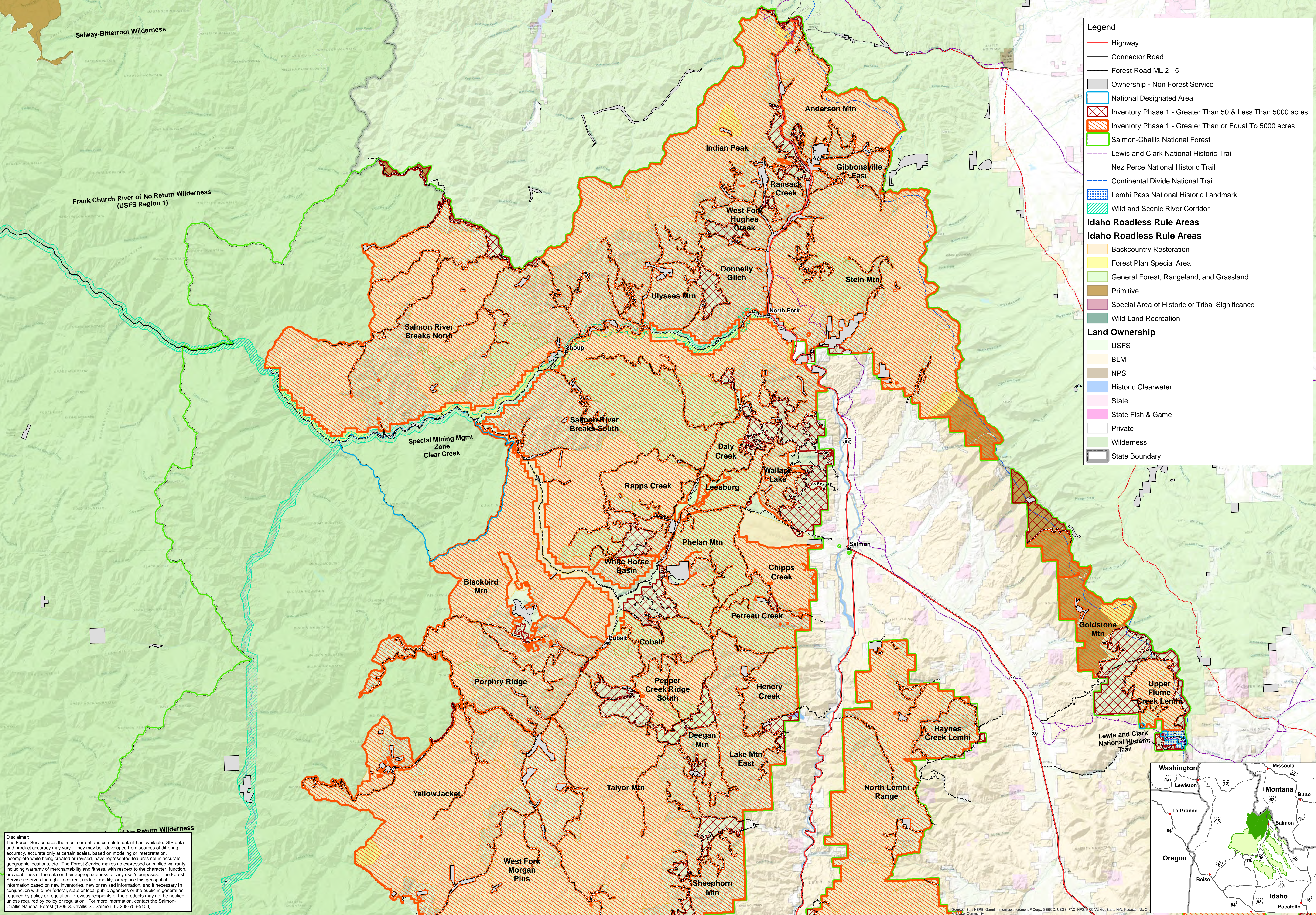
Middle Fork R.D. & West Challis-Yankee Fork R.D.





Inventory #1

North Fork R.D. & North Salmon-Cobalt



Legend

- Highway
- Connector Road
- Forest Road ML 2 - 5
- Ownership - Non Forest Service
- National Designated Area
- Inventory Phase 1 - Greater Than 50 & Less Than 5000 acres
- Inventory Phase 1 - Greater Than or Equal To 5000 acres
- Salmon-Challis National Forest
- Lewis and Clark National Historic Trail
- Nez Perce National Historic Trail
- Continental Divide National Trail
- Lemhi Pass National Historic Landmark
- Wild and Scenic River Corridor

Idaho Roadless Rule Areas

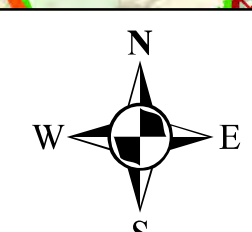
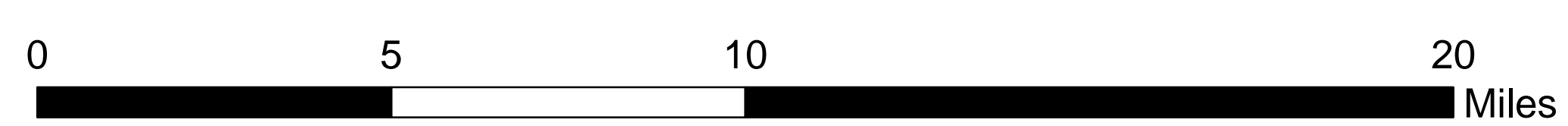
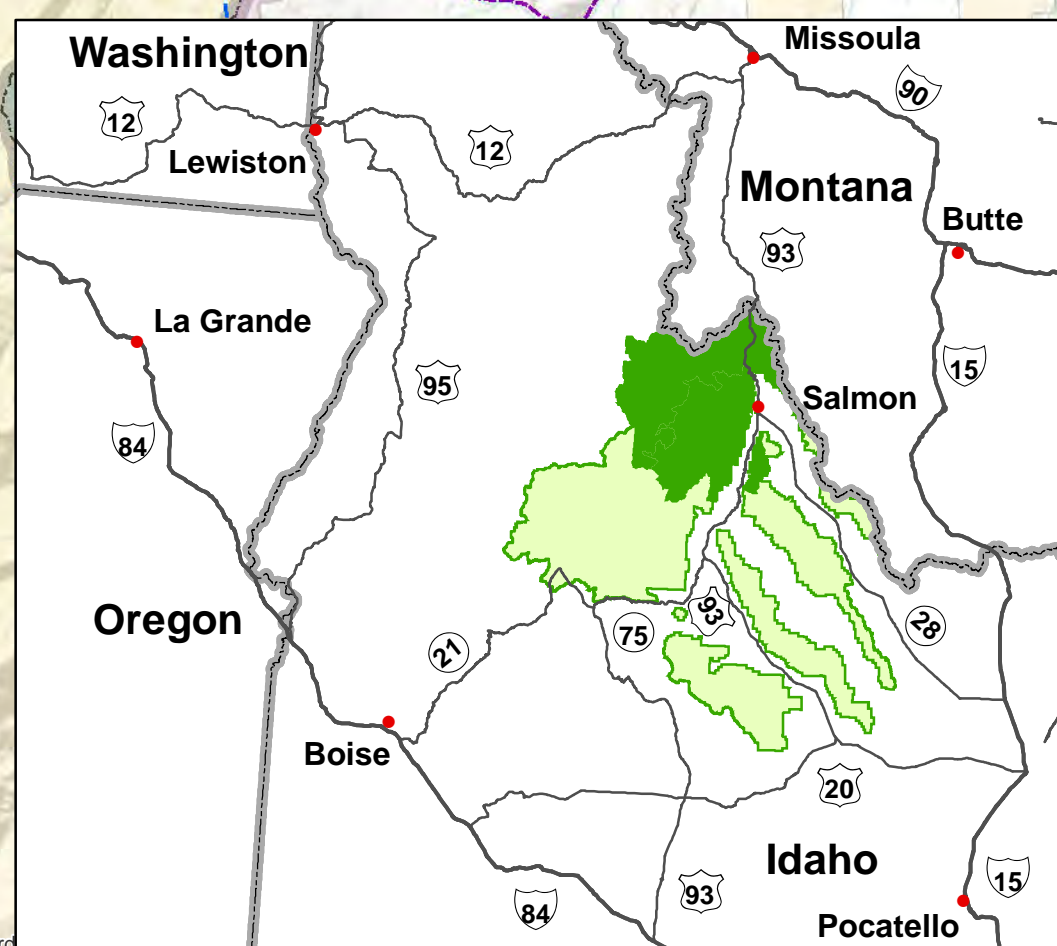
Idaho Roadless Rule Areas

- Backcountry Restoration
- Forest Plan Special Area
- General Forest, Rangeland, and Grassland
- Primitive
- Special Area of Historic or Tribal Significance
- Wild Land Recreation

Land Ownership

- USFS
- BLM
- NPS
- Historic Clearwater
- State
- State Fish & Game
- Private
- Wilderness
- State Boundary

Disclaimer:
The Forest Service uses the most current and complete data it has available. GIS data and product accuracy may vary. They may be developed from sources of differing accuracy, accurate only at certain scales, based on modeling or interpretation, incomplete while being created or revised, have represented features not in accurate geographic locations, etc. The Forest Service makes no expressed or implied warranty, including warranty of merchantability and fitness, with respect to the character, function, or capabilities of the data or their appropriateness for any user's purposes. The Forest Service reserves the right to correct, update, modify, or replace this geospatial information based on new inventories, new or revised information, and if necessary in conjunction with other federal, state or local public agencies or the public in general as required by policy or regulation. Previous recipients of the products may not be notified unless required by policy or regulation. For more information, contact the Salmon-Challis National Forest (1206 S. Challis St. Salmon, ID 208-756-5100).

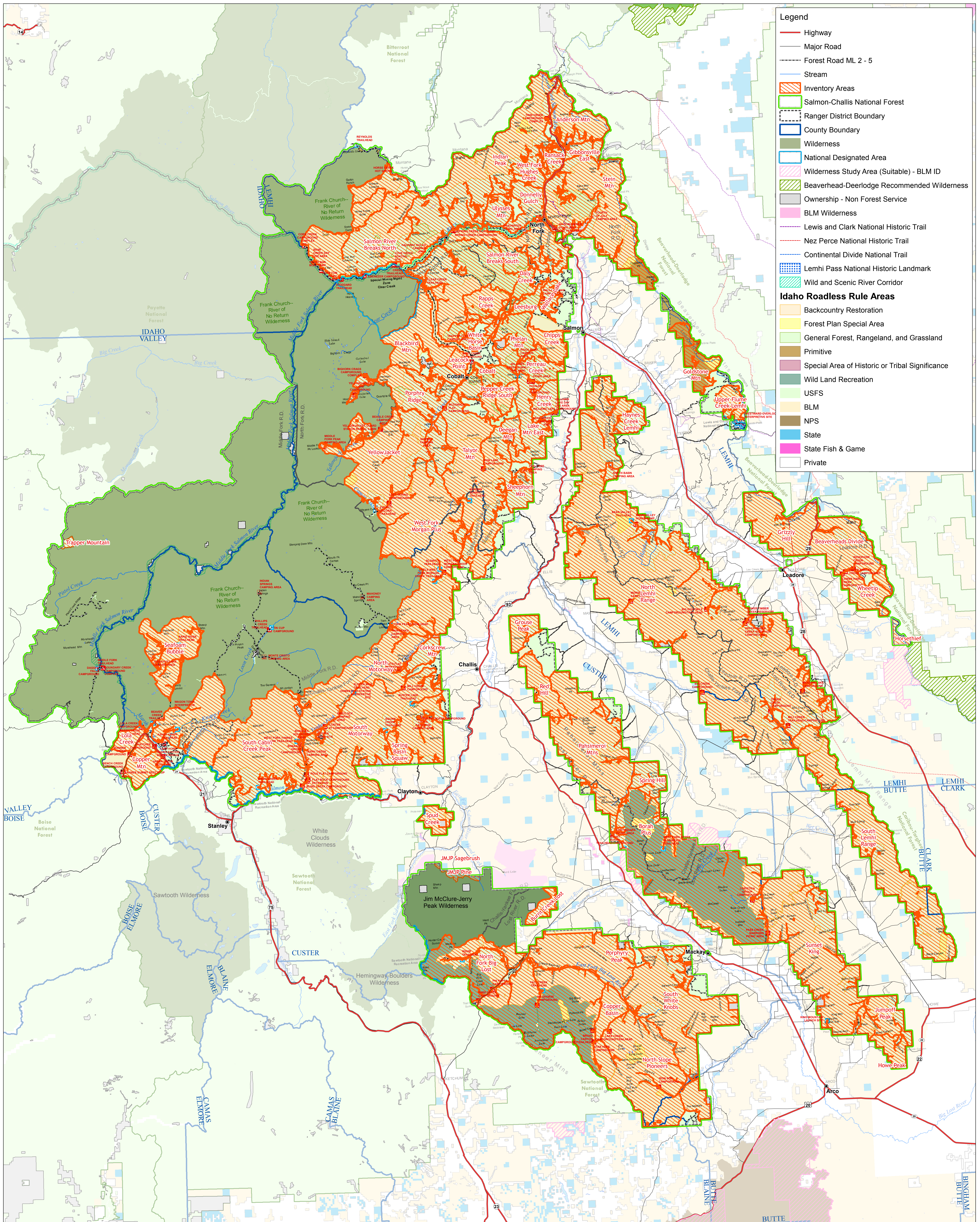




Salmon - Challis National Forest

Wilderness Inventory and Evaluation Process

Inventory Areas Step II



Legend

- Highway
- Major Road
- Forest Road ML 2 - 5
- Stream
- Inventory Areas
- Salmon-Challis National Forest
- Ranger District Boundary
- County Boundary
- Wilderness
- National Designated Area
- Wilderness Study Area (Suitable) - BLM ID
- Beaverhead-Deerlodge Recommended Wilderness
- Ownership - Non Forest Service
- BLM Wilderness
- Lewis and Clark National Historic Trail
- Nez Perce National Historic Trail
- Continental Divide National Trail
- Lemhi Pass National Historic Landmark
- Wild and Scenic River Corridor

Idaho Roadless Rule Areas

- Backcountry Restoration
- Forest Plan Special Area
- General Forest, Rangeland, and Grassland
- Primitive
- Special Area of Historic or Tribal Significance
- Wild Land Recreation
- USFS
- BLM
- NPS
- State
- State Fish & Game
- Private

