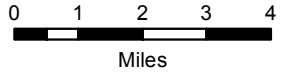


Helena-Lewis and Clark National Forest



Helena & Townsend Ranger Districts Over-The-Snow Motor Vehicle Use Map
 This map is valid Nov. 8, 2018 until updated.



Routes Designated Open to Snowmobile Only

- Typically Groomed
- - - Typically Not Groomed

Area Restrictions to X-Country Snowmobiling/OSV Use

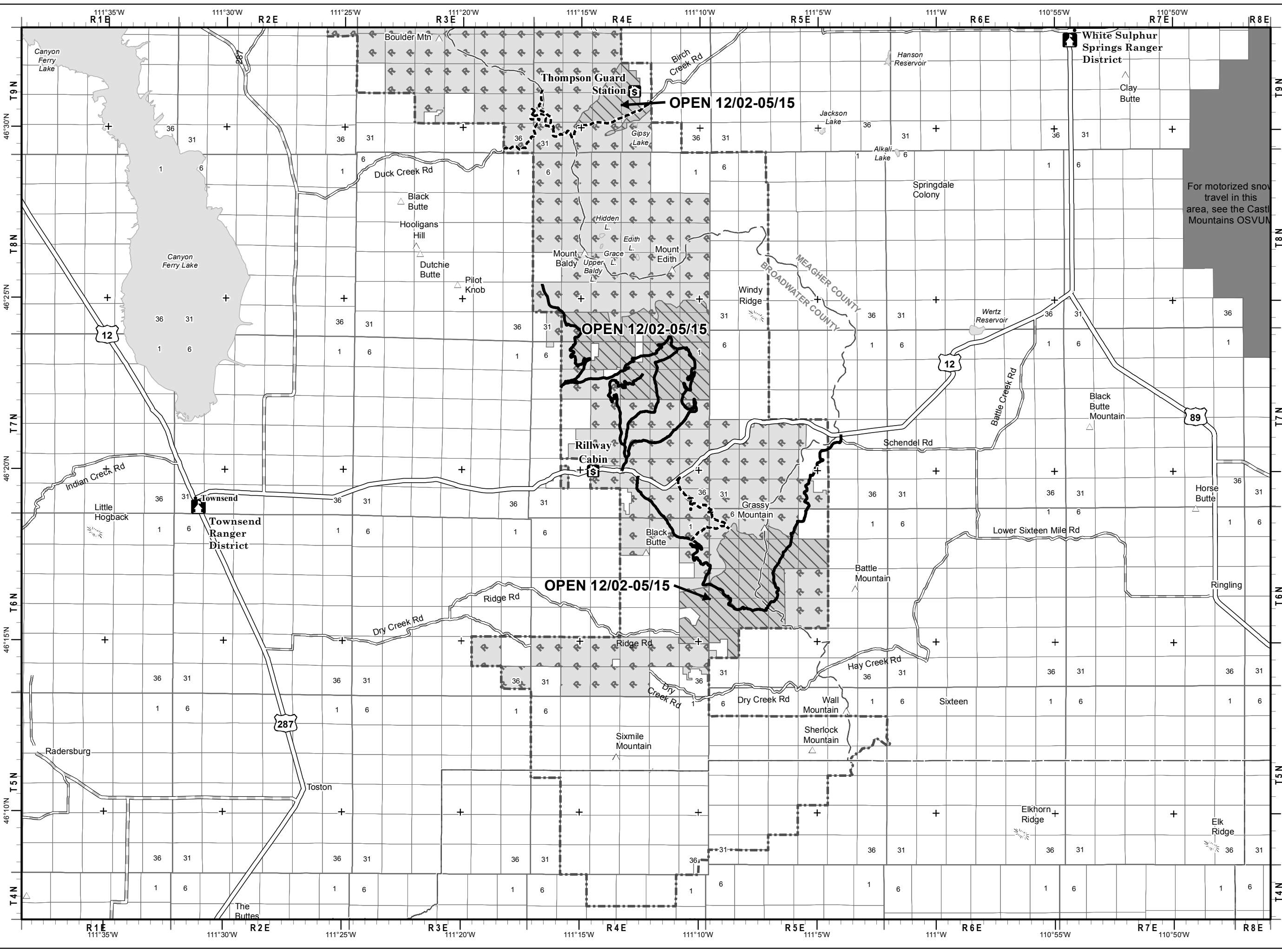
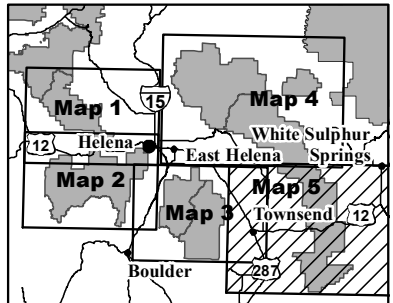
- ▣ Areas Closed Yearlong for Motorized Over-Snow Use
- ▣ Areas Open to Snowmobile, Seasonally
- ▣ Areas Open to Over-Snow Vehicles, Seasonally
- ▣ Wilderness (Closed to all Motorized Use)
- Non-Forest Service Lands

Ranger District Boundary

- - - Helena; Townsend
- ▣ Others

Roads

- Forest Roads (See MVUM for uses)
- == Interstate
- U.S. Route
- Primary, Secondary Route
- Other Non-Forest Roads



For motorized snow travel in this area, see the Castle Mountains OSVUM