

ORDER NO. 05-01-18-07
WILLIAMSON ROCK CLOSURE
ANGELES NATIONAL FOREST
SAN GABRIEL MOUNTAINS NATIONAL MONUMENT

Pursuant to 16 USC 551 and 36 CFR 261.50(a) and (b), and to protect natural resources, the following acts are prohibited within the San Gabriel Mountains National Monument of the Angeles National Forest. This Order is effective from December 4, 2018, through December 31, 2020.

1. Going into or being upon the Williamson Rock Closure Area, as described in Exhibit A and shown on the attached map. 36 CFR 261.53(a).
2. Being on any National Forest System trail within the Williamson Rock Closure Area, as shown on the attached map. 36 CFR 261.55(a).

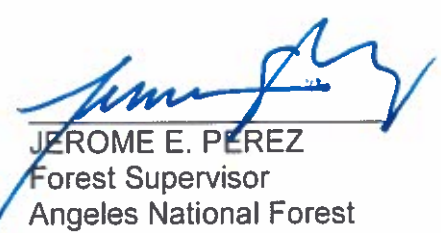
Pursuant to 36 CFR 261.50(e), the following persons are exempt from this Order:

1. Persons with a permit from the Forest Service specifically authorizing the otherwise prohibited act or omission.
2. Any Federal, State or local officer, or member of an organized rescue or firefighting force in the performance of an official duty.

These prohibitions are in addition to the general prohibitions contained in 36 CFR Part 261, Subpart A.

A violation of these prohibitions is punishable by a fine of not more than \$5,000 for an individual or \$10,000 for an organization, or imprisonment for not more than six months or both. 16 USC 551 and 18 USC 3559, 3571 and 3581.

Done at Arcadia, California, this 3rd day of December, 2018.



JEROME E. PEREZ
Forest Supervisor
Angeles National Forest
San Gabriel Mountains National Monument

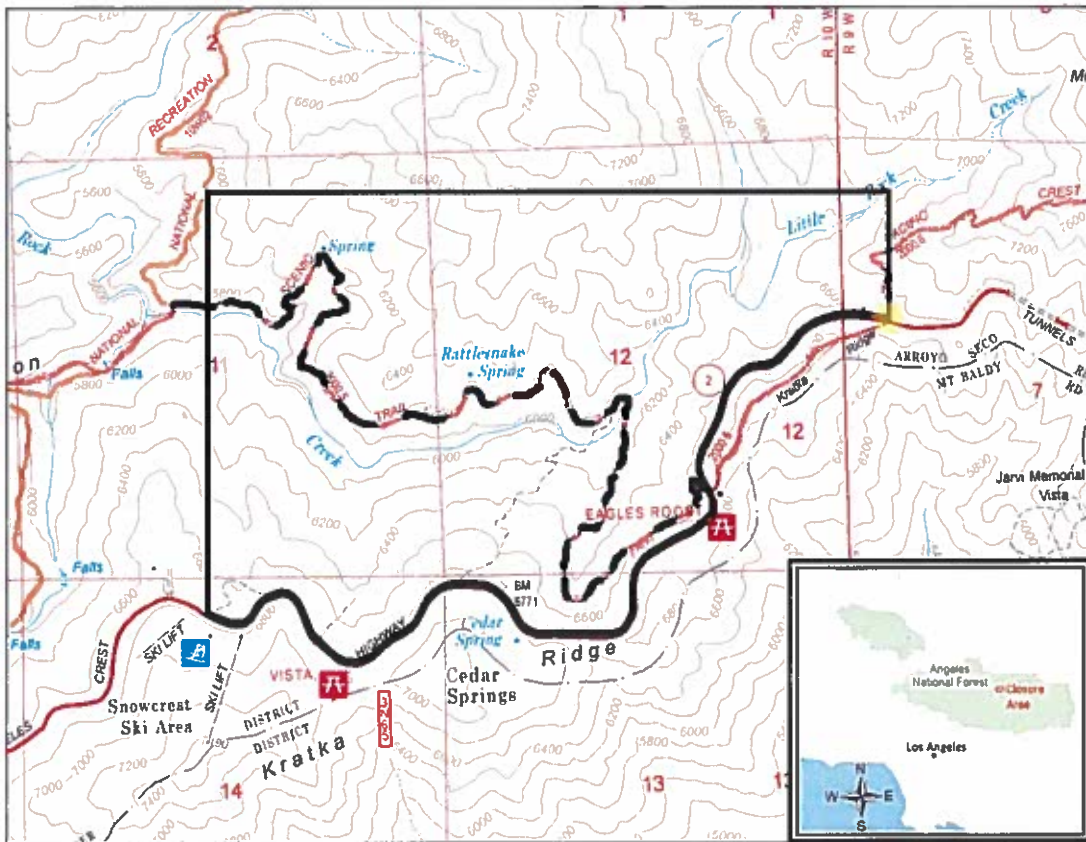
This order supersedes Forest Order No. 05-01-17-02, signed on March 23, 2017.



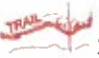



**ORDER NO. 05-01-18-07
WILLIAMSON ROCK CLOSURE
ANGELES NATIONAL FOREST
SAN GABRIEL MOUNTAINS NATIONAL MONUMENT**

Exhibit A

The boundary of the Williamson Rock Closure Area begins at the intersection of California State Highway 2 (Angeles Crest Highway) and the Pacific Crest National Scenic Trail in Township 3 North, Range 9 West, Section 7, San Bernardino Base and Meridian; then continues due north to its intersection with Little Rock Creek; then continues due west to its intersection with the High Desert National Recreation Trail (Forest Trail No. 1 OW02) in Township 3 North, Range 10 West, Section 11; then continues due south to its intersection with California State Highway 2 in Township 3 North, Range 10 West, Section 14; and then continues east along the northern edge of California State Highway 2, back to the starting point.

ORDER NO. 05-01-18-07
WILLIAMSON ROCK CLOSURE
ANGELES NATIONAL FOREST
SAN GABRIEL MOUNTAINS NATIONAL MONUMENT



- | | | | | | |
|---|------------------------------|---|----------------------------------|---|---------------------------------------|
|  | Williamson Rock Closure Area |  | Boundary Description Begins Here |  | Pacific Crest National Scenic Trail |
|  | Angeles Crest Highway |  | Closed Trail |  | High Desert National Recreation Trail |

