



The Sheldon Equine Trailhead was constructed by the Cabinet Back-country Horsemen in cooperation with Montana Fish Wildlife and Parks and the Forest Service.

This trailhead accesses over 25 miles of light to difficult hiking, horse and mountain bike trails. It is commonly used for group trail rides, endurance riding, and mountain biking.

Trail #	Name	Miles
376	Sheldon Mountain	5.91
376A	A Spur	4.69
376B	B Spur	3.98
376C	C Spur	3.90
376D	D Spur	2.90
376E	E Spur	1.47
376F	F Spur	1.49
376G	Stock Water	0.10
376H	Tie H	0.16
376I	Tie I	0.23
376J	Tie J	0.32
376K	Tie K	0.37
376L	Tie L	0.16

**For information contact:
Libby Ranger District
12557 Highway 37
Libby, MT 59923
(406)293-7773**

The Sheldon Trailhead is located 5.5 miles north of Libby, MT.

From Libby, go northeast on Highway 37 for approximately 1 mile and turn left onto Pipe Creek Road. The Sheldon Trailhead is 4.3 miles up Pipe Creek at the junction of Forest Road # 4753.

The equine trailhead provides hitching posts, fire rings, stock water, a trail training course, and an outhouse.

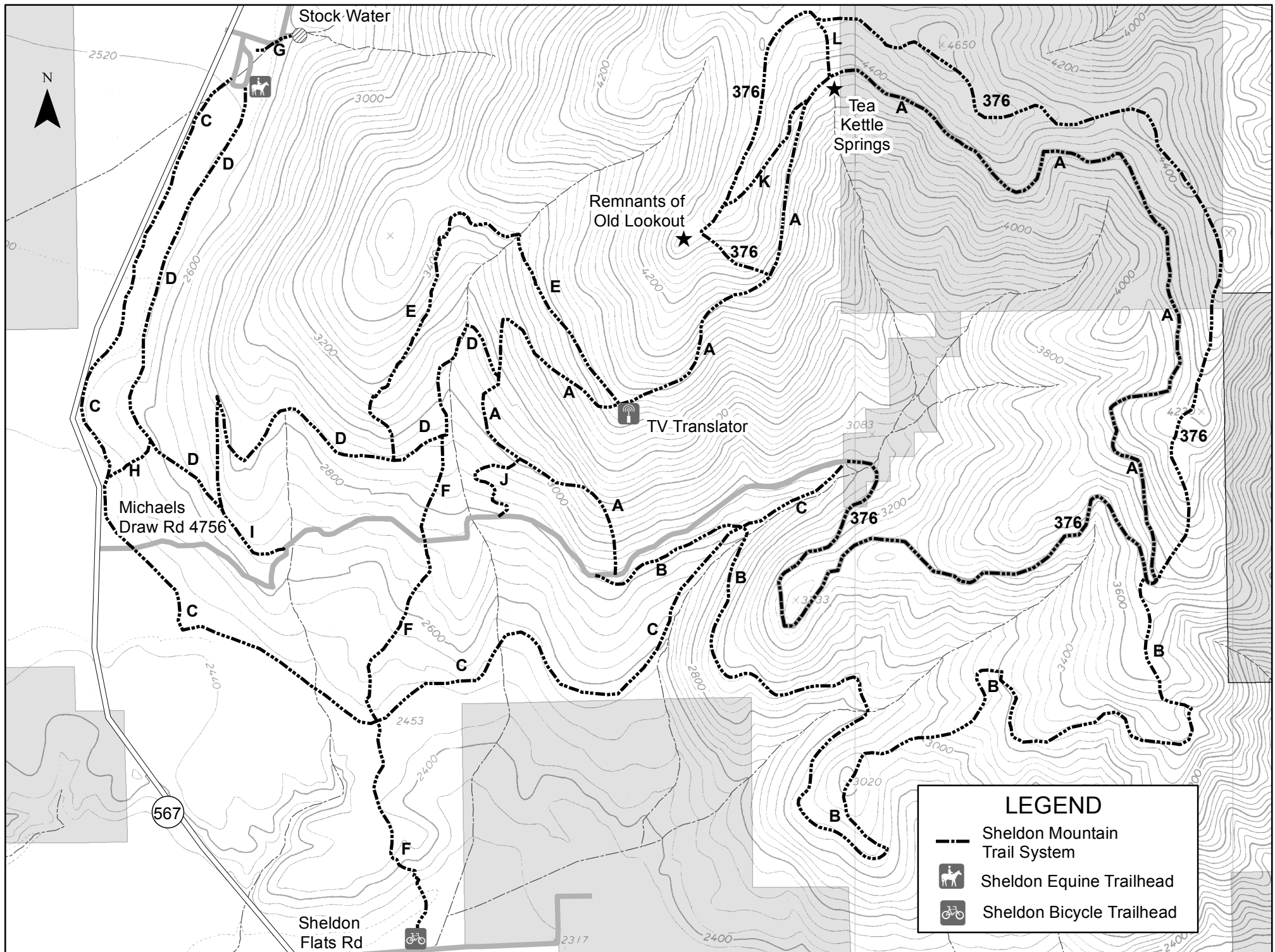
Ample space is provided for trailer turn around and parking.

This is a multi-use trail system, please be cautious of others on the trail.



Sheldon Mountain





LEGEND

- Sheldon Mountain Trail System
- Sheldon Equine Trailhead
- Sheldon Bicycle Trailhead