



United States Department of Agriculture

# Salmon-Challis National Forest Wilderness Process



Forest Service

December 2018

# Why



- Wilderness Act of 1964
  - 2012 Planning Rule  
36 CFR 219.7(c)(2)(v)
  - Forest Service Policy  
FS Handbook 1909.12,  
Chapter 70



- Mix of Process and Public Participation
- Four Part Process
  - Inventory
  - Evaluation
  - Analysis
  - Recommendation
- Part + Example



# Inventory



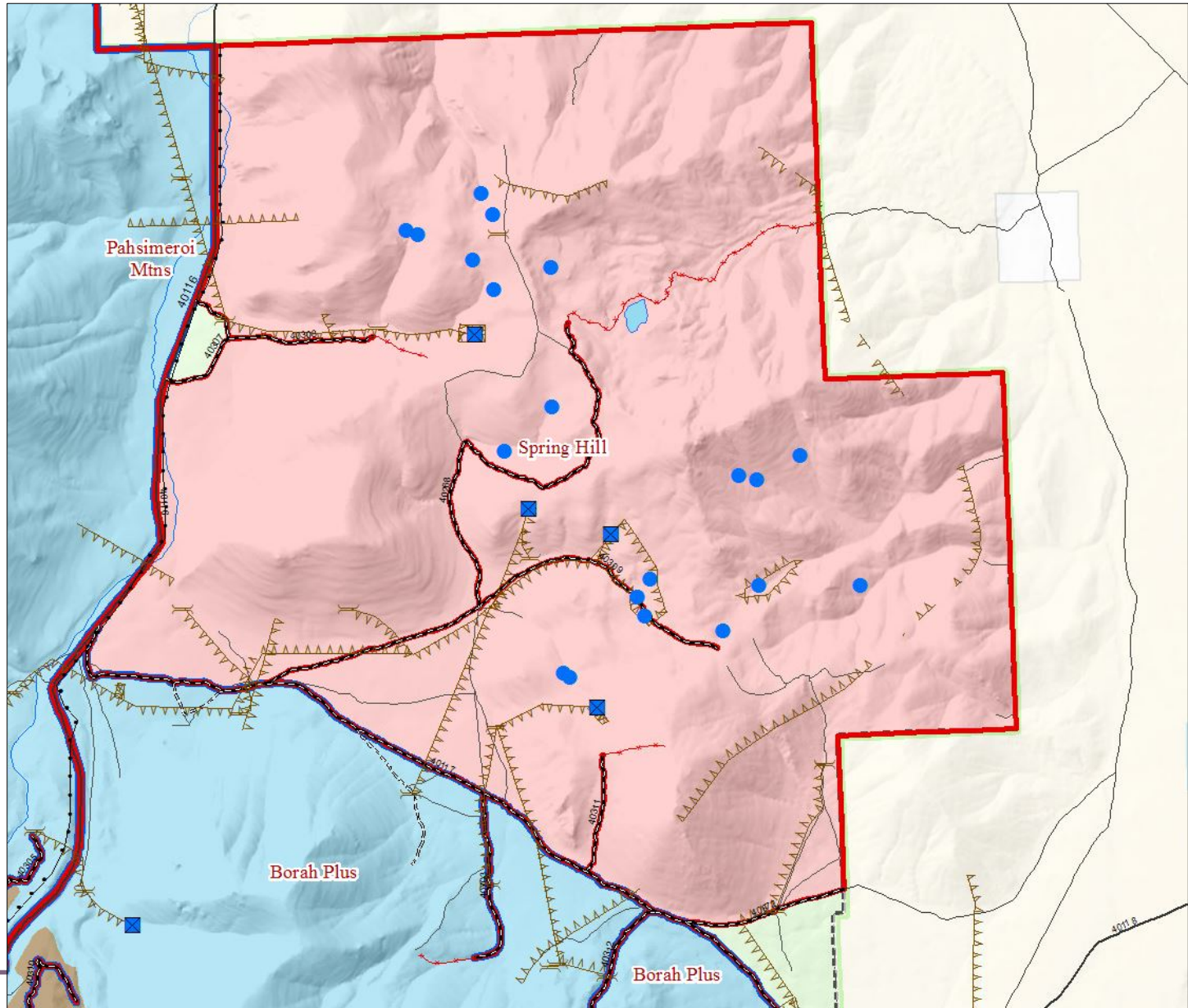
- Began in 2017
  - Identified areas of Forest not protected
  - Removed roads on the Motor Vehicle Use Map and major infrastructure
  - Of what remained, we included areas if they were more than 5,000 acres
  - Examined practicality of management for areas under 5,000 acres
- Invited feedback on process at three public meetings in 2017

# Inventory



- Wilderness Acres:  
1,370,000
- Recommended Wilderness  
in current plans:  
174,000
- Acres Inventoried:  
2,790,000

# Inventory Example





# Evaluation



- Finalized Inventory in 2018 and began Evaluation process
- Cataloged attributes that contribute to and detract from Wilderness Character

# What is Wilderness Character?

Apparent naturalness

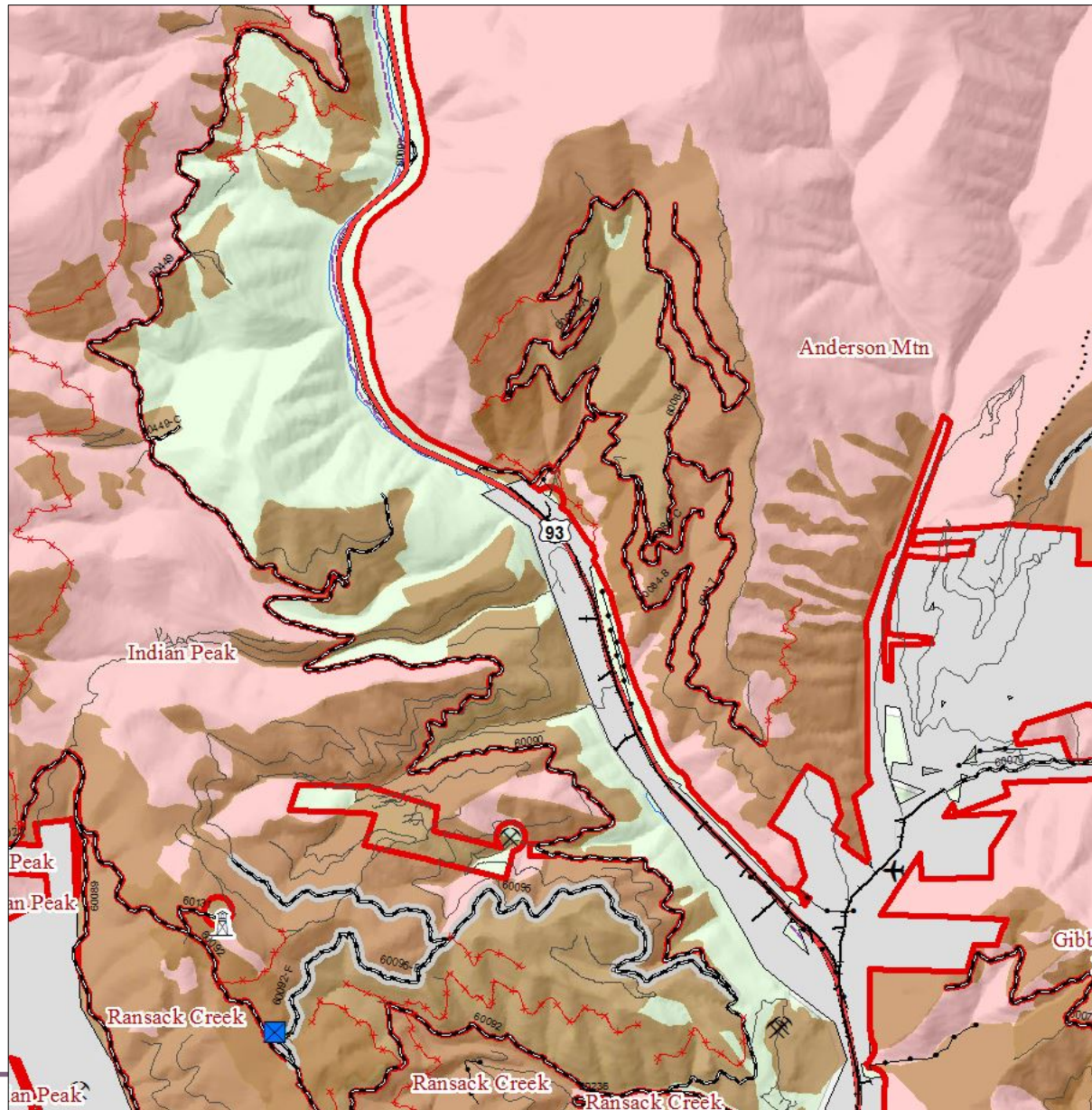
Existence of opportunities for solitude or primitive and unconfined recreation

Areas of at least 5,000 acres or of sufficient size to maintain characteristics in unimpaired condition.

Existence of ecological, geological or other features of scientific, educational, scenic and historical value



# Evaluation Example



# Evaluation Grouping

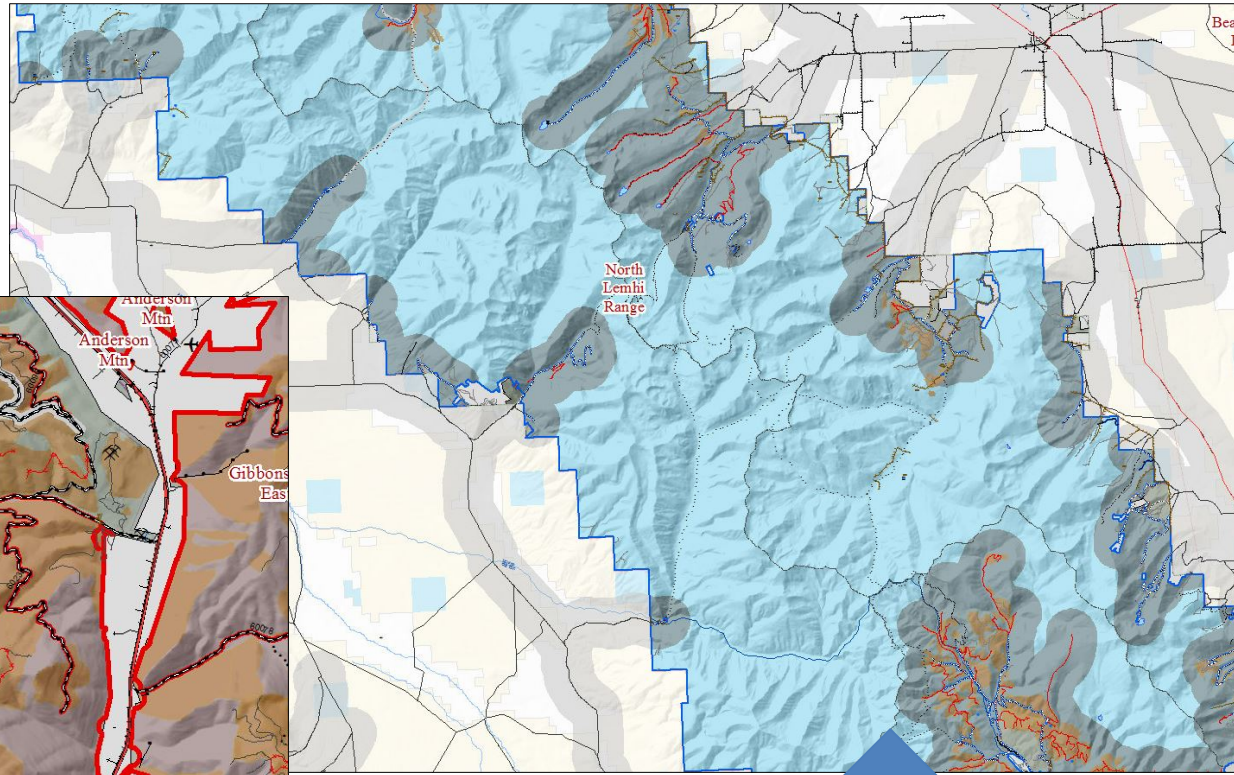
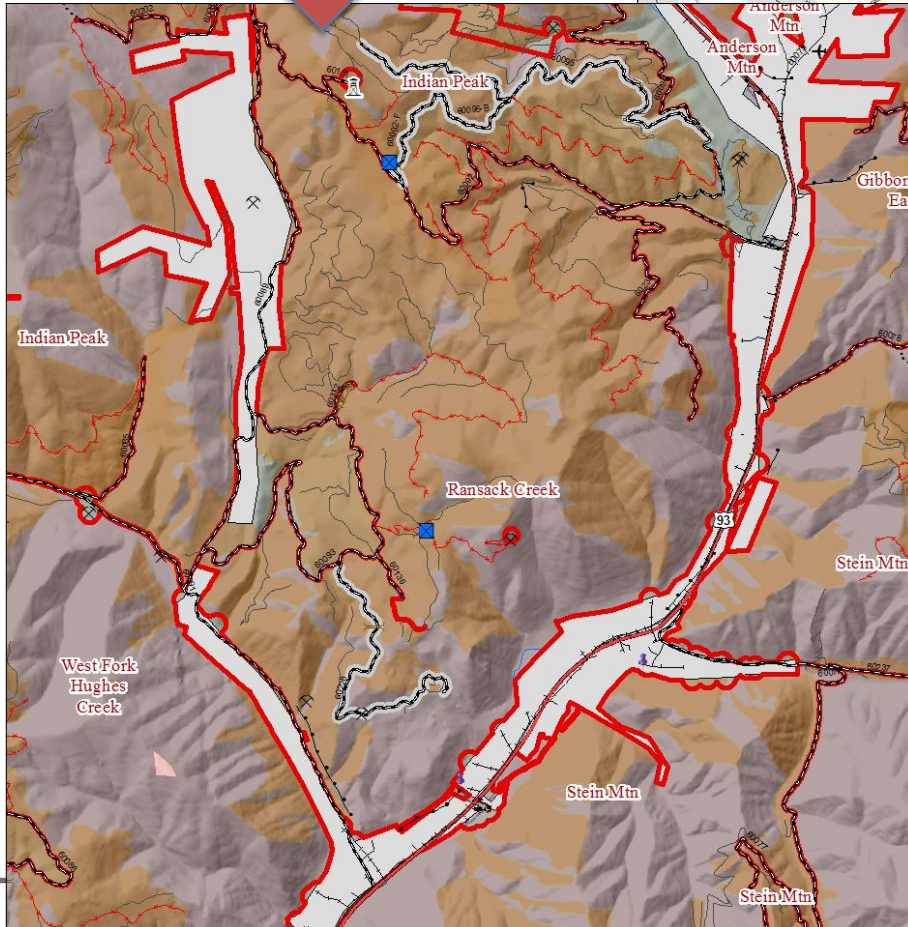
- Roads
  - Purpose Built
  - Concentration of things that detract from wilderness character
  - Naturalness or manageability can be challenged
- Groupings
  - Roaded areas: 1,470,000 acres
  - Unroaded areas: 1,320,000 acres
- Other management considerations





# Evaluation Grouping Example

Mostly  
Roaded



Mostly  
Unroaded





# What We've Heard

- Firewood opportunities
- Temporary roads for access
- Trail maintenance already behind
- Cost to authorize prohibited activities
- Post-fire rehabilitation
- Views of development from wilderness
- Purpose-built unauthorized roads
- Timber harvest
- Impacts on other uses
- Cherry stem management
- Mineral withdrawal
- Creep of more and more protections
- Isolated block
- Insurance rates
- Tax structures
- Range improvement creation, maintenance or moves
- Access for seniors and disabled
- Rock hounding
- Loop opportunities
- Inholding access and impacts
- And more ...



# Analysis



- Proposed Action
  - Some of the areas
  - None of the areas
  - All of the areas
  - Portions of the areas
- Public input is key to our understanding of tradeoffs and manageability

# Analysis

Inventory/ Evaluation Area	Management Consideration	Impacts on Manageability
Area 67	Timber Harvest	Yes
Area 67	Fire Rehabilitation	No

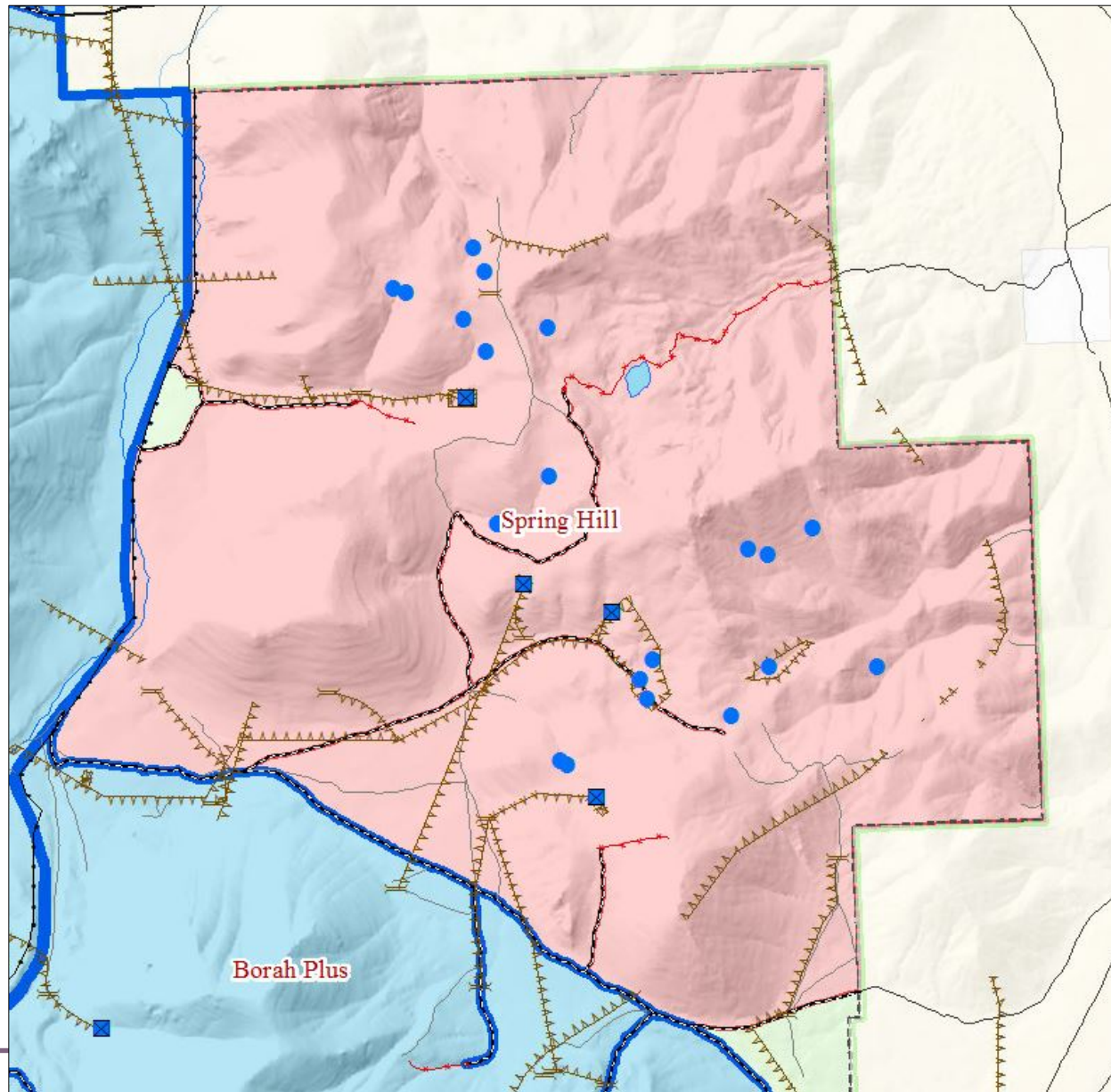


# Analysis



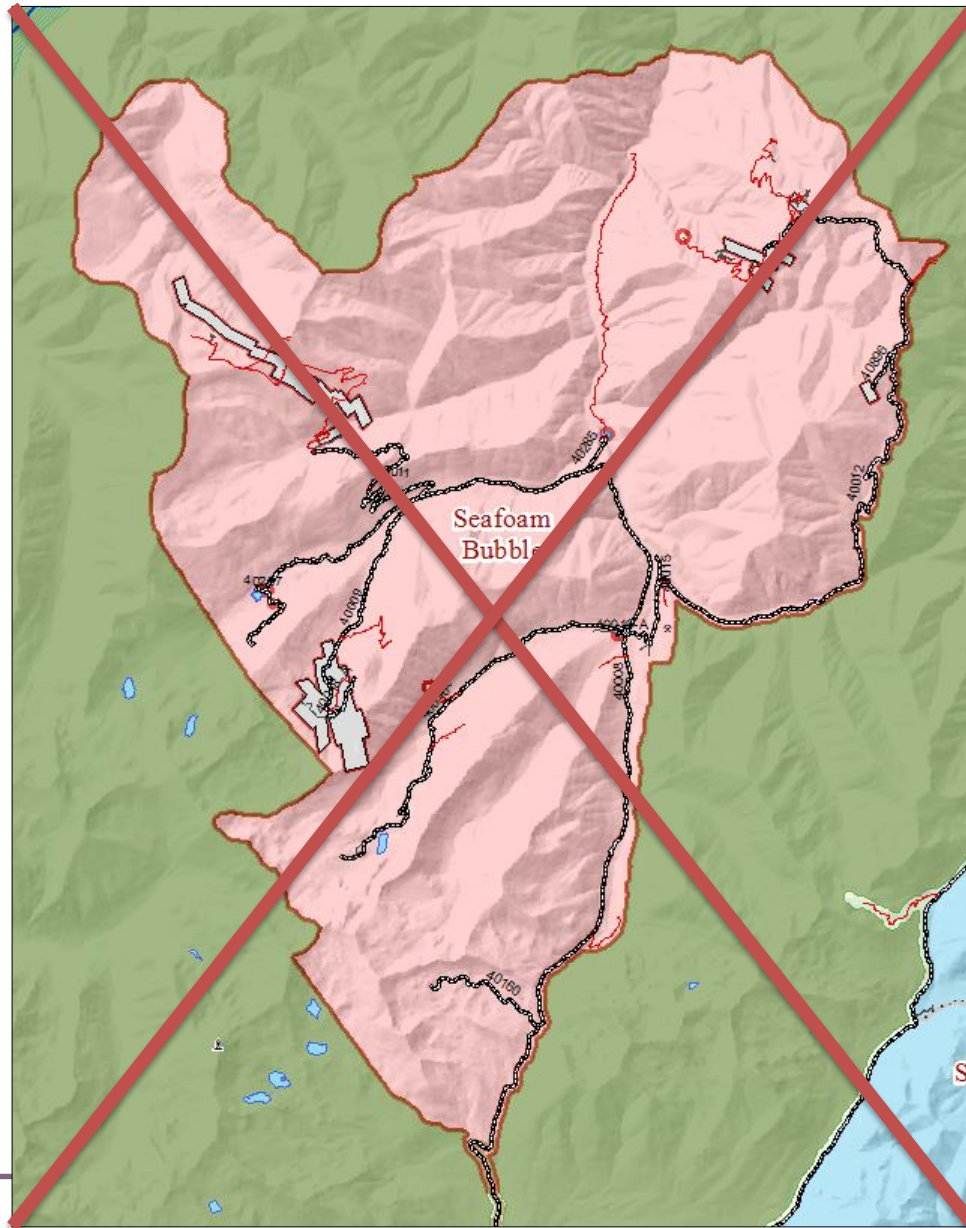
- Basis for proposed action:
  - Characteristics
  - Manageability
  - Management considerations
- Develop alternatives in accordance with National Environmental Policy Act (NEPA)

# Analysis Example



Entire  
Evaluation  
Area

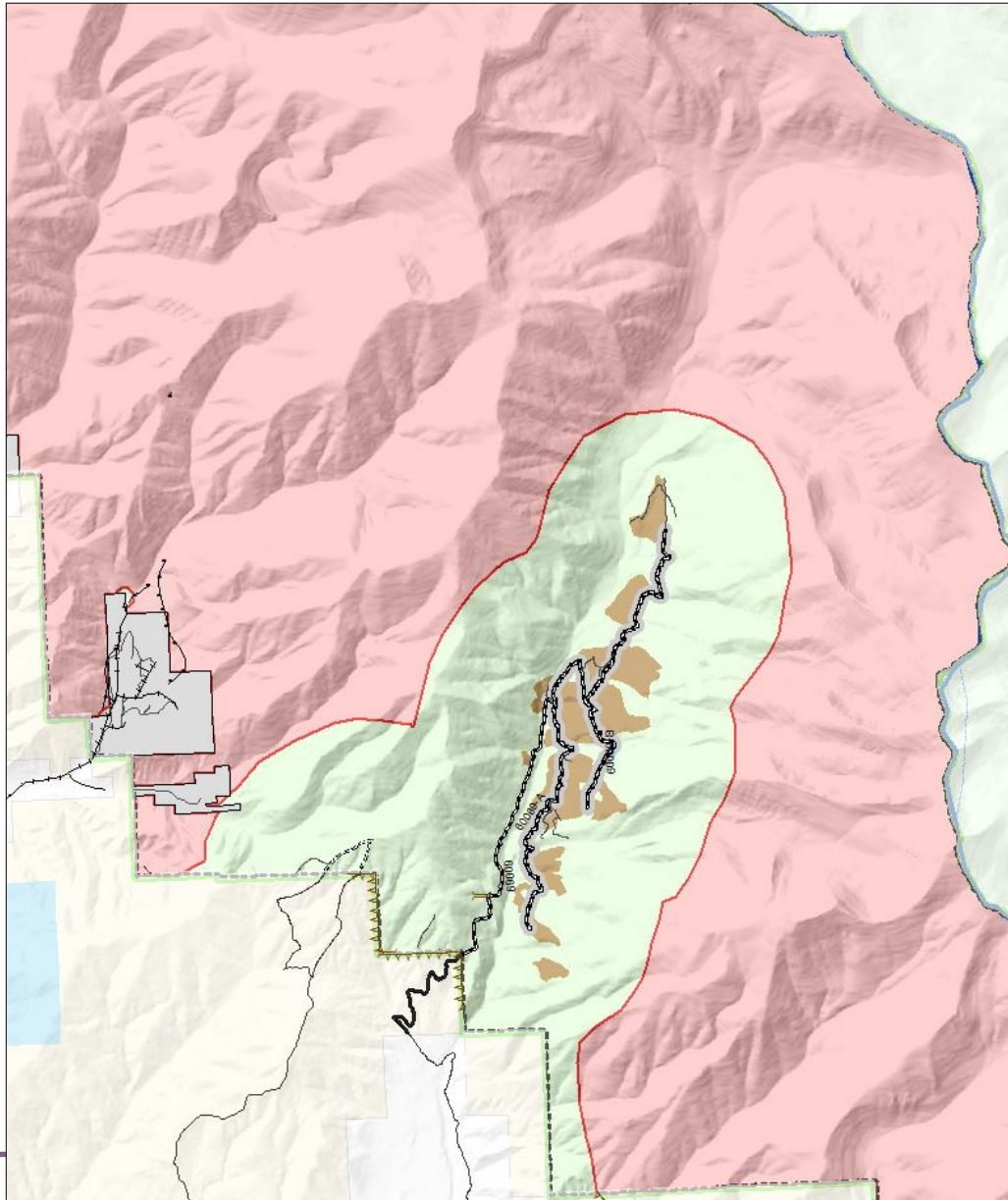
# Analysis Example



Eliminate  
Evaluation  
Area



# Analysis Example



Alter  
Boundary  
of Area

# Recommendation



- Select preliminary administrative recommendation
- Further review
  - Chief of the Forest Service
  - Secretary of Agriculture
  - President
- Only Congress can designate wilderness areas

# Where We Are Now



- November workshops
  - Demonstrated focal areas
  - Asked for feedback
  - Heard several concerns
- Feedback most helpful by

January 31, 2019