

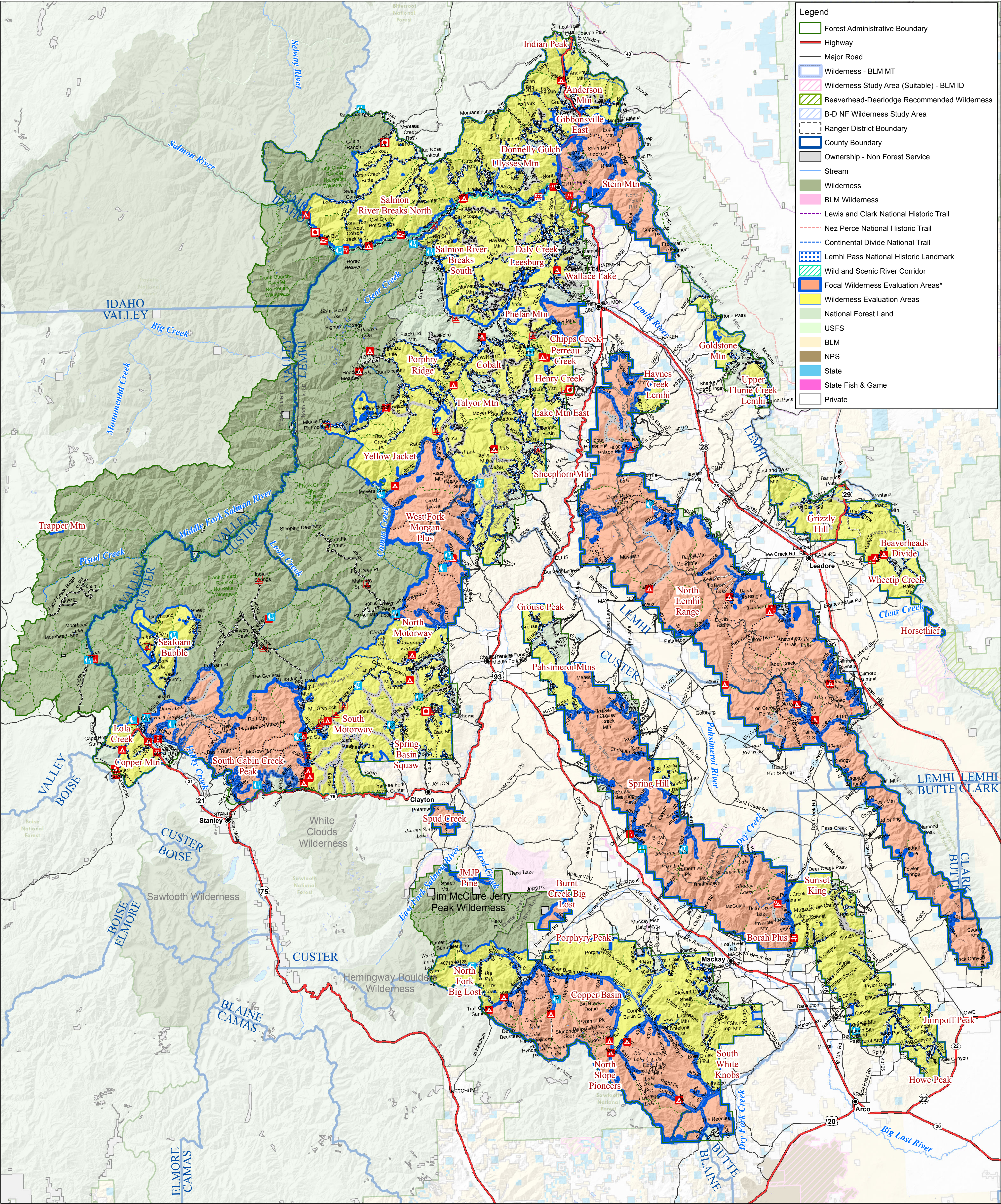


Salmon - Challis National Forest



Wilderness Inventory and Evaluation Process

Evaluation Areas Version 2



* The wilderness recommendation process consists of four distinct steps. The evaluation phase depicted on this map is step two. Wilderness evaluation areas and focal wilderness evaluation areas are used to develop lists of attributes that detract from or contribute to wilderness character. They do not represent a proposal or decision to recommend for wilderness inclusion. The Salmon-Challis has large continuous landscapes that are generally natural in appearance. Unroaded or focal areas are a means to focus attention to those areas containing large blocks of unroaded lands where the Forest Service needs to fully understand other management considerations and influence on wilderness character.

