

# Houston Valley ORV Area

**Closed January 1 – March 31**

**Closed after rain events**

**2,600 Acres**

**Fee - \$5 per operator per day.**

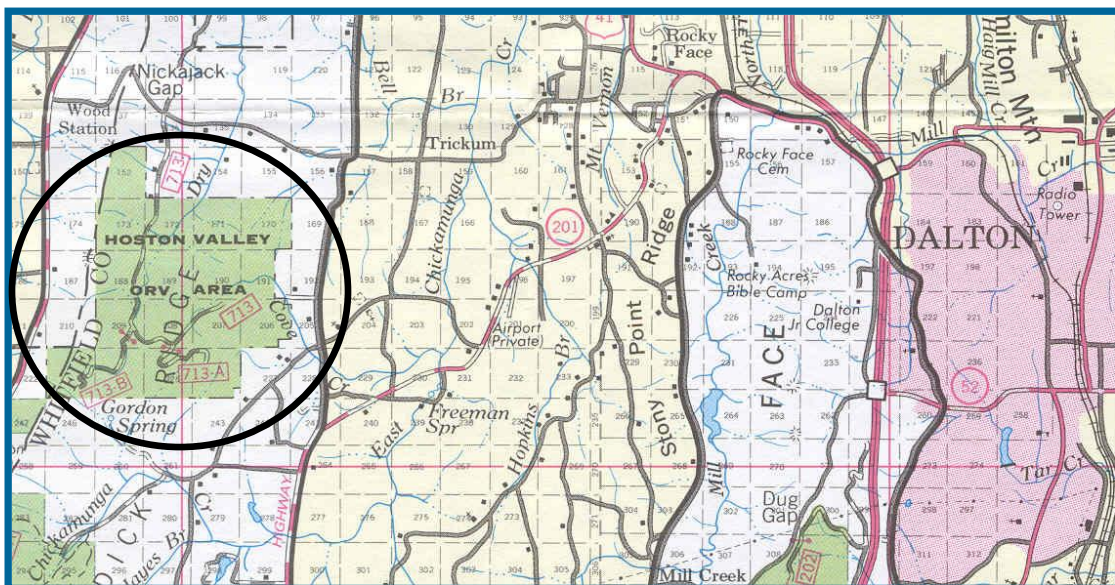
**Pay at fee station, tear off receipt and keep with you at all times.**

.....

**SUITABLE FOR – Motorbikes, all-terrain vehicles less than 50 inches wide (No pick-ups or four-wheel drive vehicles allowed). This area contains a 25-mile network of trails. These trails have been designed to provide a challenging, safe ride while protecting the environment. PLEASE STAY ON DESIGNATED TRAILS. Since this is an off road vehicle area, unlicensed drivers can ride on the designated trails if accompanied by a licensed adult.**

**DIRECTIONS – From I-75, take Exit #336 Dalton/Rocky Face Exit. Go north on US Hwy 41 for approximately 3 miles to intersection with GA Hwy 201. Turn left on GA Hwy 201 and go to second road on the right, Houston Valley Road. Turn right on Houston Valley Road and continue thru two intersections. Go 1 mile past the second intersection to Capehart Road on the left. Turn left on Capehart Road and continue for 1 mile to dead end at parking lot for Houston Valley Area.**

**For more information, call the Conasauga Ranger District at 706-695-6736.**



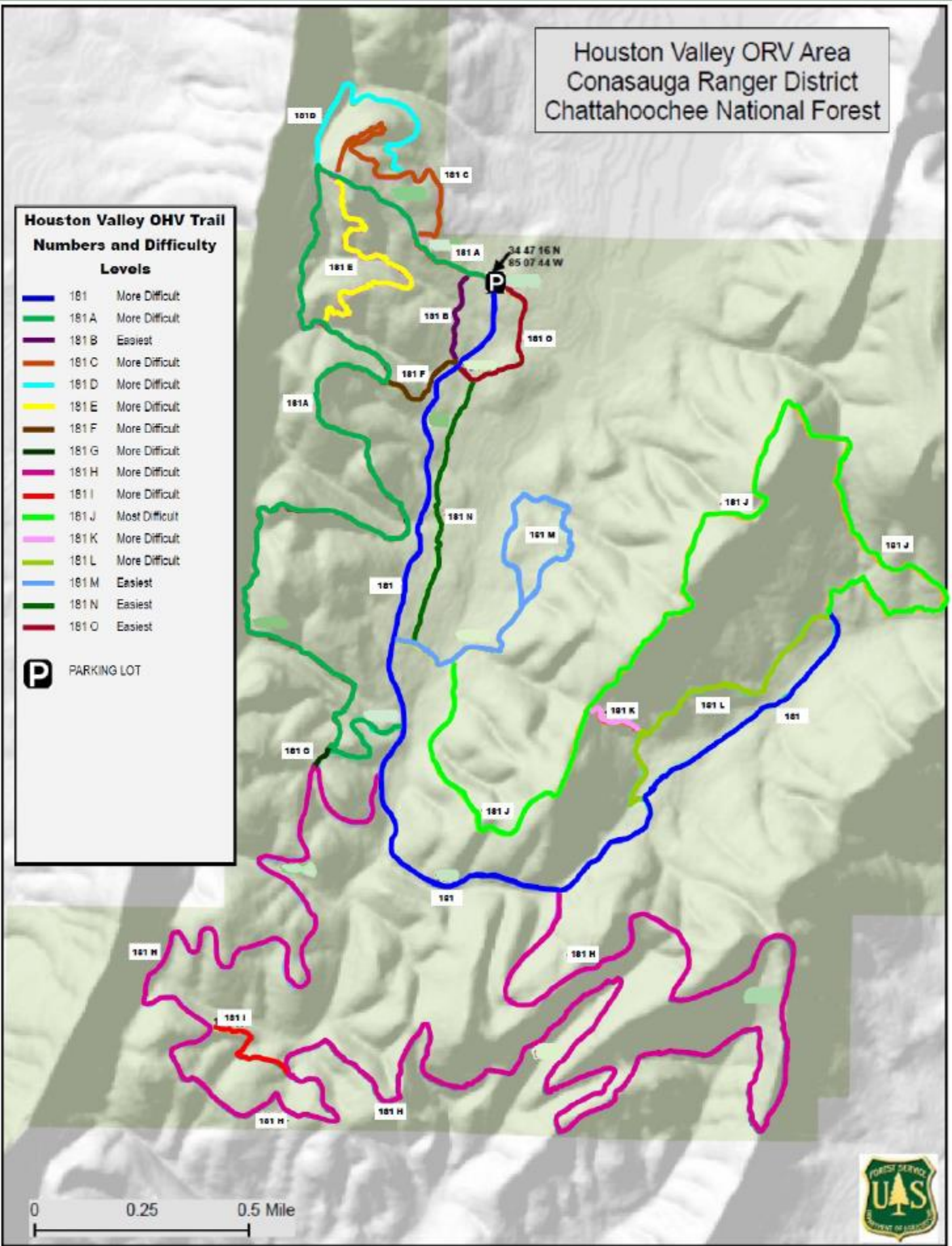
Houston Valley ORV Area  
 Conasauga Ranger District  
 Chattahoochee National Forest

**Houston Valley OHV Trail  
 Numbers and Difficulty  
 Levels**

- 181 More Difficult
- 181 A More Difficult
- 181 B Easiest
- 181 C More Difficult
- 181 D More Difficult
- 181 E More Difficult
- 181 F More Difficult
- 181 G More Difficult
- 181 H More Difficult
- 181 I More Difficult
- 181 J Most Difficult
- 181 K More Difficult
- 181 L More Difficult
- 181 M Easiest
- 181 N Easiest
- 181 O Easiest

**P** PARKING LOT

34 47 16 N  
 85 07 44 W



0 0.25 0.5 Mile

