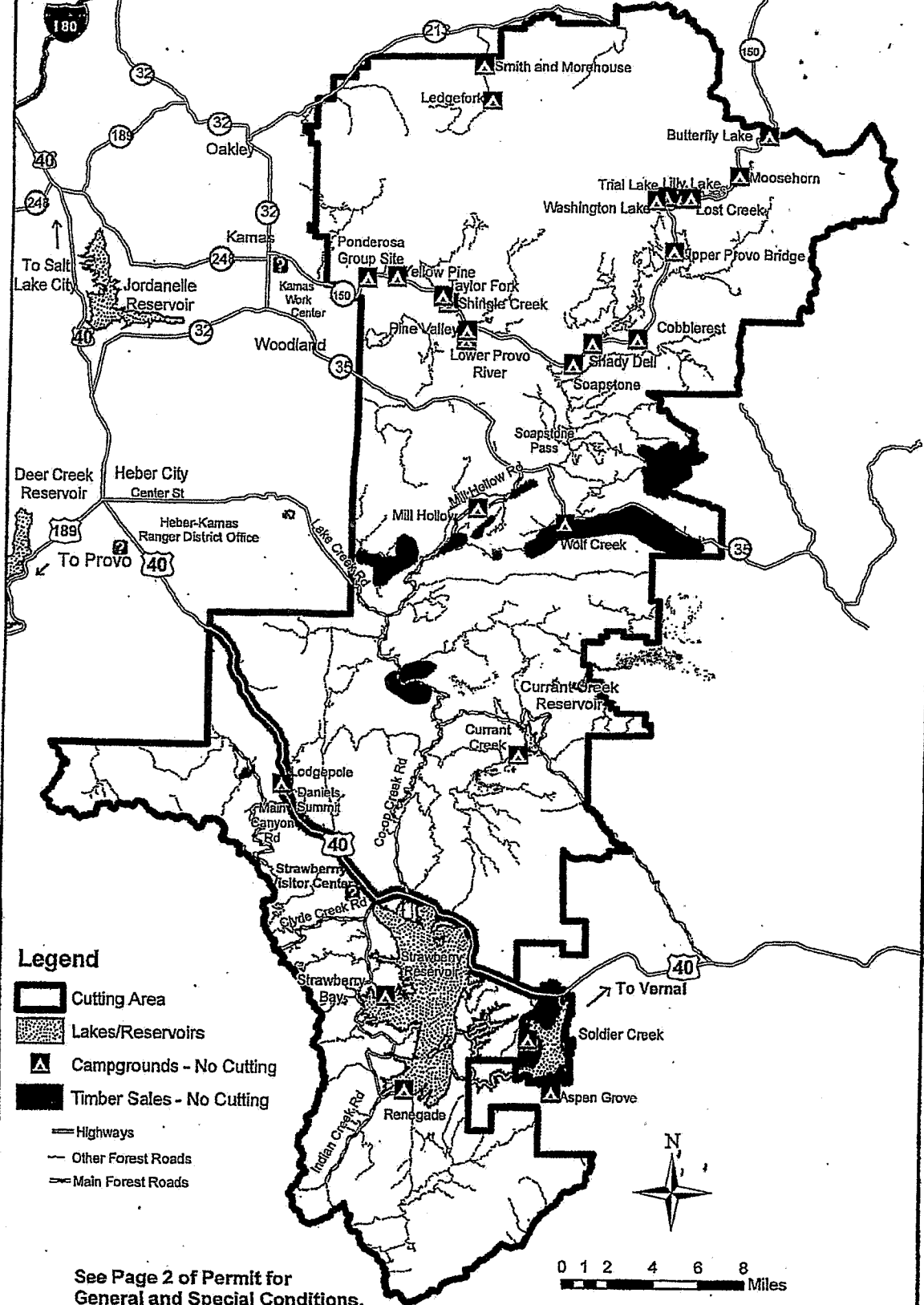







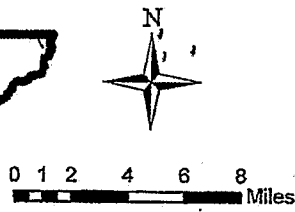


Uinta-Wasatch-Cache National Forest  
 Heber-Kamas Ranger District  
 Firewood Cutting Area



**Legend**

-  Cutting Area
-  Lakes/Reservoirs
-  Campgrounds - No Cutting
-  Timber Sales - No Cutting
-  Highways
-  Other Forest Roads
-  Main Forest Roads



See Page 2 of Permit for General and Special Conditions.

PLEASE NOTE: This map is for general reference only. It is YOUR RESPONSIBILITY to know where you are cutting. Closed areas may or may not be signed. Be sure to know where you are. If you have questions, or need a more detailed map please contact the Heber-Kamas Ranger District at 435-654-0470 or 435-783-4338.