

ORDER NO. 14-19-03

TRINITY ALPS WILDERNESS CAMPFIRE PROHIBITIONS
SHASTA-TRINITY NATIONAL FOREST

Pursuant to 16 USC 551 and 36 CFR 261.50(a), and to protect natural resources, the following acts are prohibited on the Shasta-Trinity National Forest. This order is effective from July 15, 2019, through July 14, 2021.

Building, maintaining, attending, or using a fire, campfire, or stove fire within the Canyon Creek and Stuart Fork Watershed Prohibition Area or the Alpine Lake Watershed Prohibition Area, as described on Exhibit A and shown on Exhibit B.
36 CFR 261.52(a).

Pursuant to 36 CFR 261.52(a), the following persons are exempt from this order:

Persons with a valid California Campfire Permit are not exempt from the prohibition listed above but may use a portable stove or lantern using gas, jellied petroleum, or pressurized liquid fuel.

This prohibition is in addition to the general prohibitions found in 36 CFR Part 261, Subpart A.

A violation of this prohibition is punishable by a fine of not more than \$5,000 for an individual or \$10,000 for an organization, or imprisonment for not more than six months, or both.
16 USC 551 and 18 USC 3559, 3571, and 3581.

Executed at Redding, California, this 15th day of July, 2019.



SCOTT RUSSELL
Forest Supervisor

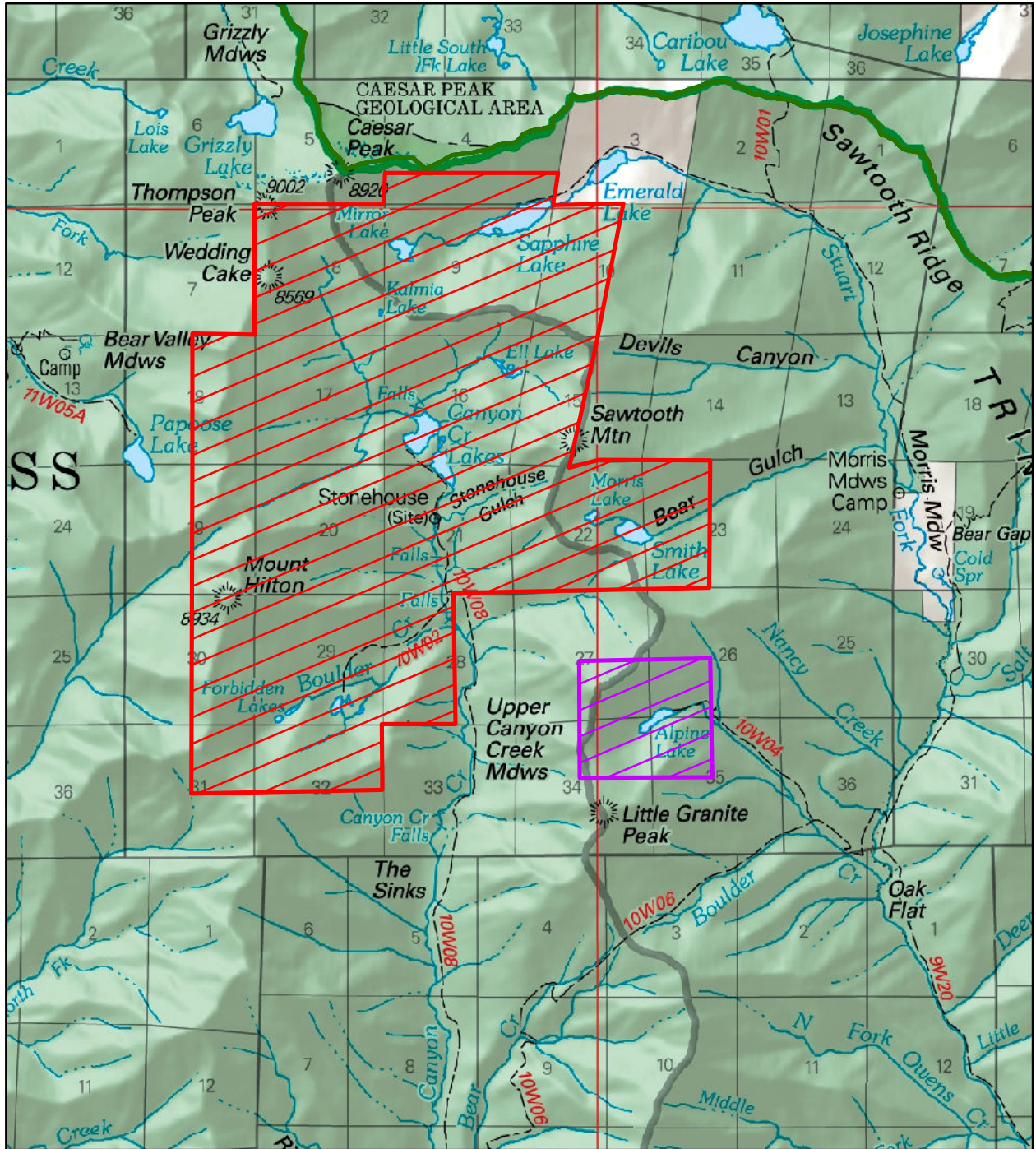
ORDER NO. 14-19-03






TRINITY ALPS WILDERNESS CAMPFIRE PROHIBITIONS
SHASTA-TRINITY NATIONAL FOREST


Exhibit A


- a. The boundary of the Canyon Creek and Stuart Fork Watershed Prohibition Area begins at the northwest corner of Section 8, Township 36 North, Range 10 West, Mt. Diablo Base and Meridian, then continues east along the section line to its intersection with the southwest corner of Section 4, then continues due north for $\frac{1}{4}$ mile, then continues due east to its intersection with the western boundary of Section 3, then continues south along the western edge of Section 3 to its intersection with the southwestern corner of Section 3, then continues east along the southern edge of Section 3 to its intersection with the midpoint of the southern edge of the section, then continues southerly and follows the midpoints of Sections 10 and 15 to its intersection with the midpoint of the southern edge of Section 15, then continues east along the northern edge of Section 22 to its intersection with the northern midpoint of Section 23, then continues due south to its intersection with the midpoint of the southern edge of Section 23, then continues due west to its intersection with the midpoint of the northern edge of Section 28, then continues due south to its intersection with the midpoint of the southern edge of Section 28, then continues due west to its intersection with the northwest corner of Section 33, then continues due south to the midpoint of the eastern edge of Section 32, then continues due west to its intersection with the center of Section 31, then continues due north to its intersection with the southern edge of Section 7, then continues due east to its intersection with the southeast corner of Section 7, then continues due north back to the starting point.
- b. The boundary of the Alpine Lake Watershed Prohibition Area begins at the center of Section 27, Township 36 North, Range 10 West, Mt. Diablo Base and Meridian, then continues due east to its intersection with the center of Section 26, then continues due south to its intersection with the center of Section 35, then continues due west to its intersection with the center of Section 34, then continues due north back to the starting point.

Shasta-Trinity National Forest Trinity Alps Wilderness Order No. 14-19-03 Exhibit B



	Alpine Lake Watershed Campfire Prohibition Areas
	Canyon Creek & Stuart Fork Watershed Campfire Prohibition Areas
	Forest Boundary
	National Forest Land
	Other Land, Including Private





0 0.5 1 2 Miles