

Gifford Pinchot National Forest

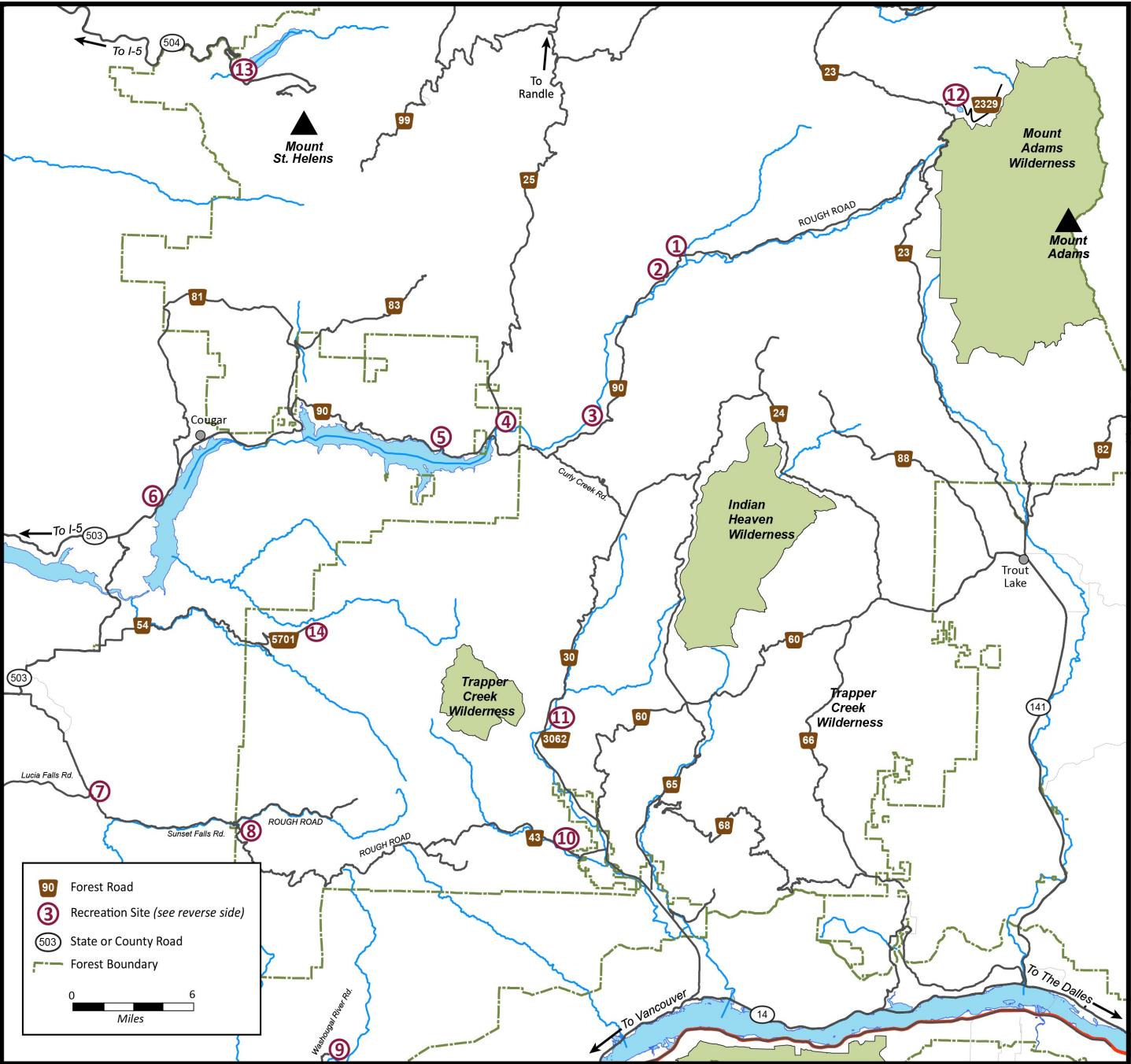


www.fs.usda.gov/giffordpinchot

@GiffordPinchot @GPNF

Nearby Sites to Explore

(See reverse side for descriptions.)



Be Prepared for Your Visit

- Bring water, a map, first aid kit, appropriate footwear, and emergency items.
- Drive carefully on forest roads and know the limitations of your vehicle.

Take Care of the Forest

- Practice "Leave No Trace" by removing any trash, respecting all plants and wildlife, and staying on developed trails.

Be Safe Around Water and Waterfalls

- Water can be extremely cold- even in the middle of summer.
- Never jump off waterfalls or dive into pools. Rocks and logs can be hidden beneath the water surface and currents can drag you underwater.
- Never play in the stream above a waterfall. Rocks can be slippery, and currents could take you or someone you love on a deadly trip over the falls.
- Keep a close eye on children and pets.

Recreation Opportunities in and around the Gifford Pinchot National Forest



1. Quartz Creek Trail Forest Road 90	Hiking the first 2 miles of the Quartz Creek Trail provides a pleasant day trip through an old-growth forest to several nice waterfalls. The trailhead is located about 5 miles east of Lower Falls Recreation Area. Be prepared to ford at least one stream crossing.
2. Lewis River Trail: Lower Falls to Quartz Creek Forest Road 90	This 3.3 mile section of Lewis River Trail #31 travels from Lower Falls to Quartz Creek Falls Trail #5. The trail skirts the river, jogs up to Middle Falls Trailhead, and back down past a small falls before coming to Middle Lewis River Falls. The trail climbs another mile to Alec Creek near the base of Upper Lewis River Falls. It then climbs to a cliff top overlooking Upper Lewis River Falls. The trail ends on Forest Road 90 across from Quartz Creek Trail.
3. Curly Creek Falls/ Lower Lewis River Trail Forest Road 90	Curly Creek Falls is a short, family-friendly trail with views of two falls: Miller Creek Falls and Curly Creek Falls. Curly Creek Falls is striking, with two rock arches over the falls. Be aware the unique geology of the area causes the stream and Curly Creek Falls to vanish in the late summertime! The Lower Lewis River trail is 10.3 miles on the north bank of the river and features a pleasant forested stroll with many views of the river. Bolt Camp shelter at 2.5 miles makes a great day trip destination.
4. Eagle Cliff Park Forest Road 90	Day use park managed by PacifiCorp at the Lewis River bridge offering fishing access, picnic tables, and wildlife viewing. No fee; no bathroom.
5. Swift River Camp Forest Road 90	Day use and campground park on Swift Reservoir. Boat ramp, swimming beach, picnic area, bathrooms, and potable water. \$4 day use fee.
6. Yale Park, Beaver Bay, Merwin Park Forest Road 90	The Lewis River reservoirs feature a number of day use parks, campgrounds, and river access managed by PacifiCorp for recreation and hydropower. Sites may feature swimming beaches, playgrounds, restrooms, fishing, boat ramps, and/or showers. \$4 day use fee. Camping \$20-\$23.
7. Moulton Falls/ Lucia Falls Lucia Falls Rd.	Two great waterfall parks northeast of Battle Ground that connect via a 2.5 mile bike and hiking trail. Restrooms and picnic area. Swimming area at Moulton Falls. Both are managed by Clark County. \$3 day-use fee.
8. Sunset Falls Sunset Falls Rd.	A great place for a picnic, hike, or just relaxing by the falls. Picnic area, bathroom, campground. \$5 day-use fee; concession site- forest recreation passes not accepted.
9. Dougan Falls Washougal River Rd.	Waterfall along the Washougal River with deep pool at its base. Managed by Skamania County, there is a campground, picnic tables, toilet, sandy beach.
10. Hemlock Picnic Area Forest Road 43	This pleasant site on Trout Creek offers a covered picnic area and viewing platform at a steelhead recovery site in the scenic and historic Wind River valley. This is a great jumping off point for more strenuous hikes and adventures, but also an easy place to experience nature and history. Offers accessible picnic sites, flush toilets, and drinking water.
11. Falls Creek Falls Trail Forest Road 3062	Trail climbs through forest about 2.3 miles before reaching the waterfall. Falls Creek Falls surges over cliffs in three tiers, creating a gentle mist below. The two lower tiers can be seen from Falls Creek Falls Trail. Another mile up a connector trail, and east on the Upper Falls Creek Trail gives you access to views of the upper tier of the waterfall.
12. Takhlakh Lake Forest Road 2329	Takhlakh Lake is located on the northwest side of Mt. Adams Wilderness at 4,400 ft. elevation in a well-shaded location with a beautiful view of Mt. Adams. The campground has 54 sites while the day use area offers picnic sites, a primitive boat launch, toilets, and hiking trails. No drinking water. \$5 day use fee; concession site- forest passes not accepted.
13. Coldwater Lake Hwy 504	Coldwater Lake Recreation Area is located 45 miles east of Castle Rock in the heart of the Mount St. Helens blast zone near Johnston Ridge Observatory. Experience the effect the 1980 eruption had on the Coldwater Valley, including creating a brand new lake. Kayaking, fishing, picnicking, and hiking are popular here.
14. Siouxon Trail Forest Road 5701	This scenic trail stays in fairly close proximity to the creek and accesses several waterfalls in the Siouxon Basin, including Siouxon Falls about two miles up the trail. Forest Road 5701 is recommended for high clearance vehicles. No bathroom; no drinking water.