



UNITED STATES DEPARTMENT OF AGRICULTURE
FOREST SERVICE
ROGUE RIVER-SISKIYOU NATIONAL FOREST
Medford, OR
ORDER NO. 06-10-24-19-11

Emergency Road and Area Closure for Health and Safety

Pursuant to 16 USC § 551 and 36 CFR § 261.50 (a) and (b), the following acts are prohibited in the High Cascades Ranger District within the Rogue River-Siskiyou National Forest as described below and shown in Exhibit A. This Order will be effective beginning September 9, 2019 and will terminate on November 30, 2019 unless sooner rescinded.

The Forest Area Closure is depicted in the attached map, Exhibit A.

PROHIBITIONS:

1. Going onto or being within an area closed for public health and safety. [36 CFR § 261.53 (e)]
2. Being upon a closed road. [36 CFR § 261.54 (e)]
3. Being upon a closed trail. [36 CFR § 261.55 (a)]

AREA CLOSURE DESCRIPTION:

Closure is bounded as follows: beginning at the intersection of National Forest Road (NFR) 3795 and NFR 3795-300 (T32S., R4E., section 33); heading east on NFR 3795 to its intersection with 3795-600 (T32S., R4E., section 26); heading east along NFR 3795-600 to its intersection with Trail No. 1084 (T32S., R4E., section 25); heading east along Trail No. 1084 to its intersection with Trail No. 1085 (T32S., R5E., section 29); heading south along trail 1085 to its intersection with trail 1089 (T32S., R5E., section 33); heading south along trail 1089 to its intersection with the RRS National Forest Boundary (NFB) (T33S., R5E., section 3); heading south along the RRS NFB to its intersection with the eastern side of PLSS section line 14 (T33S., R5E., section 14); heading south along the eastern boundaries of PLSS sections line 14 and 23 to the southeast corner of PLSS section line 23 (T33S., R5E., section 23); heading west along the southern side of PLSS section lines 23, 22 and 21 to section 21's intersection with Trail No. 979 (T33S., R5E., section 21); heading south along Trail No. 979 to its intersection with Trail No. 980 (T33S., R5E., section 28); heading west along Trail No. 980 to its intersection with NFR 3780 (T33S., R4E., section 36); heading north along road 3780 to its intersection with road 3780-995 (T33S., R5E., section 30); heading north along road 3780-995 to its intersection with the south side of PLSS section 19 line (T33S., R5E., section 19); heading west along the southern side PLSS section lines 19, 24 and 23 to the southern side of PLSS section line 23's intersection with NFR 3785 (T33S., R4E., section 23); heading west along NFR 3785 to its intersection with 3785-200 (T33S., R4E., section 26); heading north along NFR 3785-200 to its intersection with NFR 3790 (T33S., R4E., section 9); heading east along NFR 3790 to its intersection with the eastern side of the PLSS section 3 line (T33S., R4E., section 3); heading north along the eastern side of PLSS section line 3 to its intersection with the Middle Fork Creek

of the Rogue River (T33S., R4E., section 3); heading west along the Middle Fork Creek of the Rogue River to its intersection with the western side of PLSS section 3 line (T33S., R4E., section 3); heading north along the western side of PLSS section lines 3 and 34 to the intersection of the western side of PLSS section 34's intersection with NFS road 3795-300 (T32S., R4E., section 34); heading west along NFS road 3795-300 to its intersection with NFS road 3795 (T32S., R4E., section 33).

ROAD CLOSURE DESCRIPTION:

The following roads are closed:

- National Forest Road (NFR) 3795-300
- NFR 3795-500
- NFR 3790
- NFR 3790-200
- NFR 3785

TRAIL CLOSURE DESCRIPTION:

The following trails, or segments of trails are closed:

- Trail No. 979 east from the Middle Fork Trailhead to its intersection with trail 980.
- Trail No. 980
- Trail No. 1084 from the Tom and Jerry Trailhead east to 1084s intersection with Trail No. 1085
- Trail No. 1085
- Trail No. 1089 from its intersection with Trail No. 1085 south to its intersection with the Pacific Crest Trail.

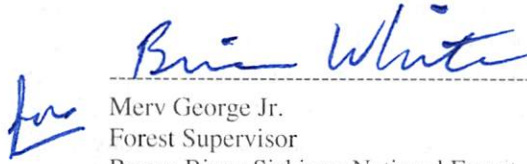
EXEMPTIONS:

Pursuant to 36 CFR § 261.50(e), the following persons are exempt from this order:

1. Persons with a permit specifically authorizing the otherwise prohibited act or omission.
2. Any Federal, State, or local officer, or member of any organized rescue or fire fighting force in the performance of an official duty.

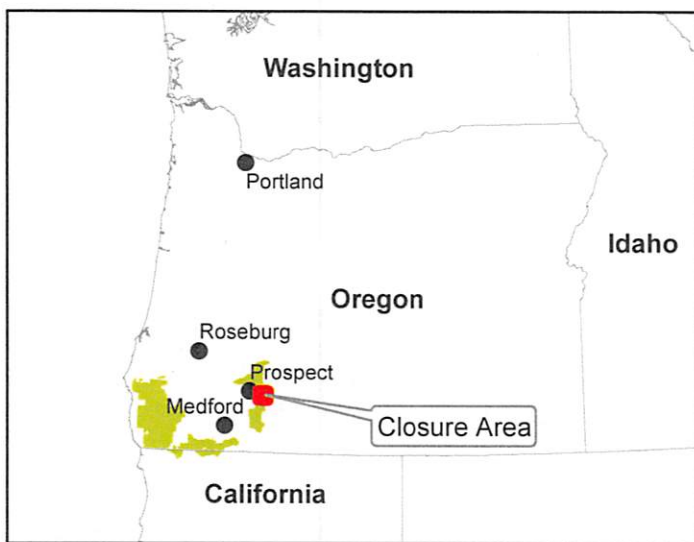
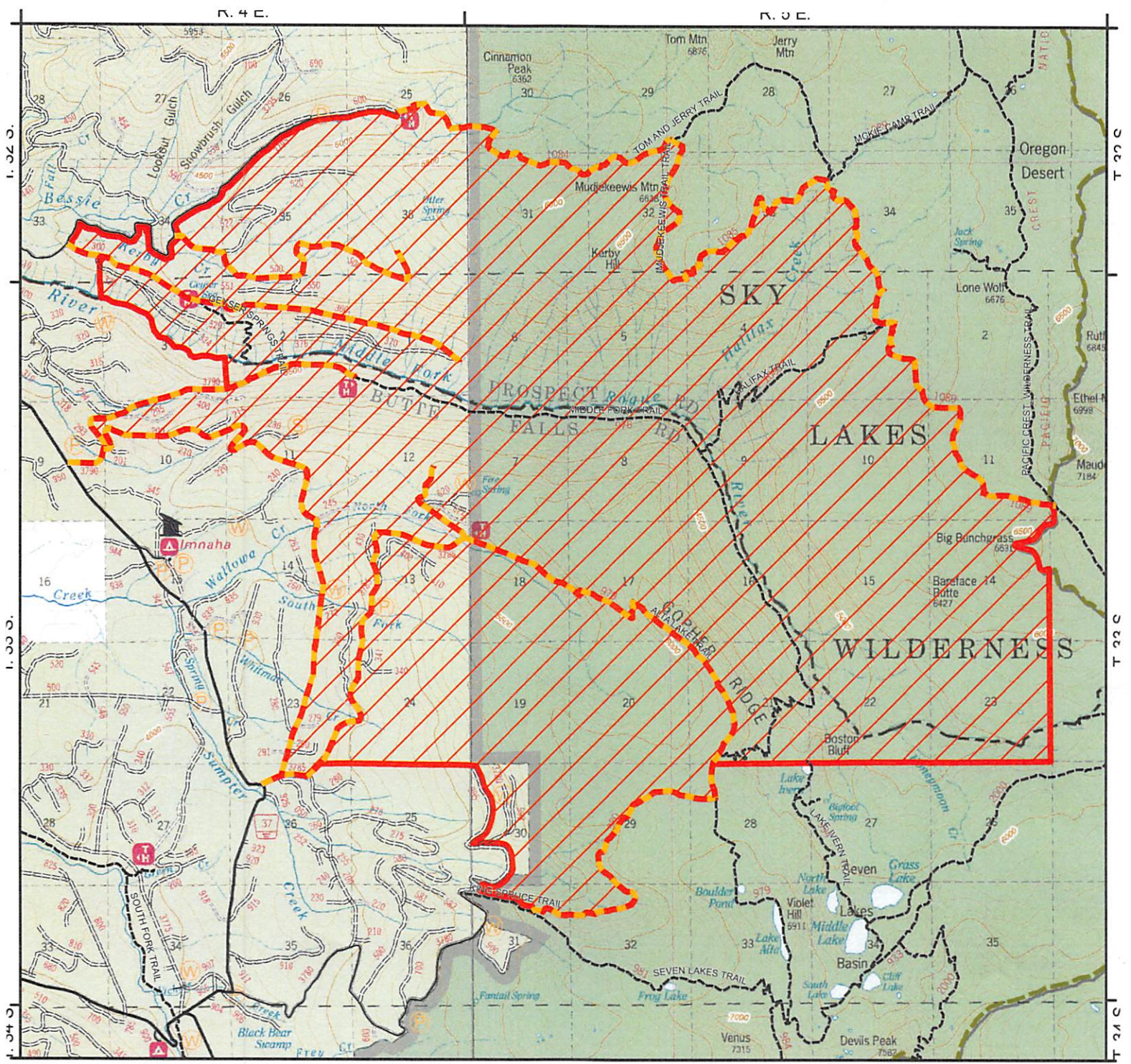
This prohibition is in addition to the general prohibitions in 36 C.F.R. Part 261, Subpart A.

Executed in Medford, Oregon this 9th day of September 2019.



Merv George Jr.
Forest Supervisor
Rogue River-Siskiyou National Forest

Violations of this prohibition is punishable as a Class B Misdemeanor, by a fine of not more than \$5,000 for an individual or \$ 10,000 for an organization, or imprisonment for not more than 6 months, or both (16 USC § 55 1; 18 USC § 3559 and 18 USC § 3571).



Gopher Fire
Exhibit A
Closure Number 06-10-24-19-11
High Cascades Ranger District
Rogue River-Siskiyou National Forest
541-618-2200

Legend

- Road and Trail Closure
- Area Closure
- USFS Admin Boundary

