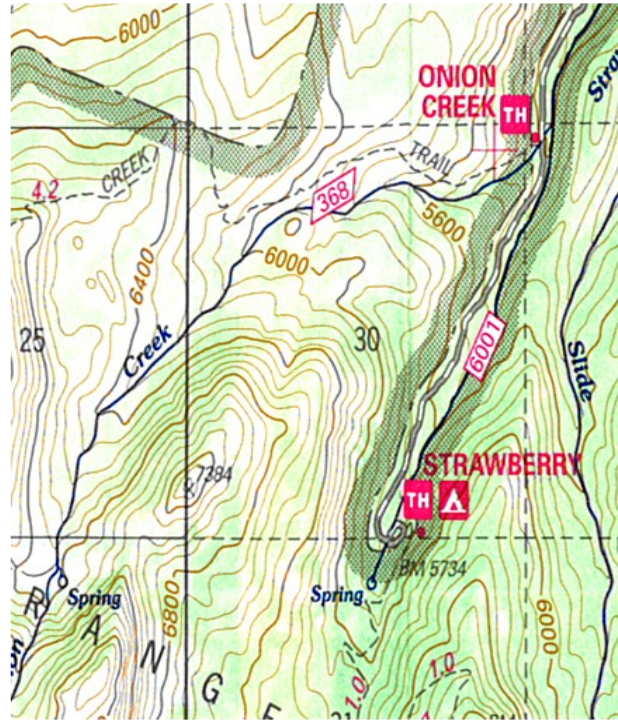


What is Wilderness?

The Wilderness Act of 1964 defines Wilderness as:

A wilderness, in contrast with those areas where man and his own works dominate the landscape, is hereby recognized as an area where the earth and its community of life are untrammelled by man, where man himself is a visitor who does not remain. An area of wilderness is further defined to mean in this Act an area of undeveloped Federal land retaining its primeval character and influence, without permanent improvements or human habitation, which is protected and managed so as to preserve its natural conditions and which (1) generally appears to have been affected primarily by the forces of nature, with the imprint of man's work substantially unnoticeable; (2) has outstanding opportunities for solitude or a primitive and unconfined type of recreation; (3) has at least five thousand acres of land or is of sufficient size to make practicable its preservation and use in an unimpaired condition; and (4) may also contain ecological, geological, or other features of scientific, educational, scenic, or historical value.



Map section taken from Strawberry Mountain Wilderness map, available for purchase at all Malheur National Forest Offices.

For More Information

Malheur National Forest
P.O. Box 909
431 Patterson Bridge Rd.
John Day, Or. 97845

www.fs.fed.us/r6/malheur

Facebook: @MalheurNationalForest

Twitter: @MalheurNF

541-575-3000



**United States
Department of
Agriculture**



Onion Creek Trail #368



**Forest Service Malheur
National Forest**

Onion Creek Trail #368

The Onion Creek Trail is located south of the town of Prairie City in the Strawberry Mountain Wilderness and ranges in elevation from 5520 ft. and climbing to 8640 ft.

This trail can be easily reached in the summer months. The trail has a 52% incline making it a more steep trail. Be prepared for the climb.

This trail is in the wilderness, no mechanized modes of travel are allowed. This includes bicycles, ohv's, or game carts.



What to Look Forward To

The Onion Creek Trail passes through an area burned by wildfire along the north face of Strawberry Mountain. The trail leads into the Strawberry Mountain Wilderness.

Great Hike

The trail head for the Onion Creek Trail begins below Strawberry Campground. The Onion Creek Trail is ideal for multiday and single day hikes. For a great single day hike climb Strawberry Mountain. For a multiday hike connect with other trails to make a large loop, these trails include Strawberry Basin Trail #375, and Roads End #201. The trail can be difficult to follow in the upper alpine meadows, follow rock cairns and blaze marks. If you are going to build a campfire please stay 100 ft. from water sources and use existing fire rings.

Safety In the Woods

Be prepared for all types of conditions and weather. Bring with you extra food and water, or a water filtration system. Be bear and cougar aware, tie food up in a tree or bring a bear box to protect food, never keep food in your tent. Let your family and friends know where you are planning on going as well as an estimated time of return. Don't count on cell coverage or GPS. Have a paper map and know how to read it. Plan ahead and be safe.



Trail Information

The trail is 6.3 miles one way.

The Onion Creek Trail connects with Strawberry Basin Trail #375. To the connection of the two trails is 5 miles.

The trail connects with Roads End Trail #20, to the connection of the two trails is 6.3 miles.

Moderate difficulty.

Directions

From Hwy 26 enter the town of Prairie City, turn onto South Main Street, at the first stop sign turn left. Just around this corner Bridge Street will be on the right side, turn onto Bridge Street, this will become County Rd. 60 follow this road to the trailhead. The trail head is 1 mile before Strawberry campground.