

File Code:

Date: September 18, 2019

To: File

From: Tammy Randall-Parker, Inyo National Forest Supervisor *JRP*

Re: Forest Order No. 05-04-50-19-10

This document explains my rationale and the regulatory basis for implementing a Forest Order closing the area, trails, and roads in the vicinity of the Taboose Fire on the Inyo National Forest.

The Taboose fire is 10 miles Southwest of Big Pine, California. The fire was first detected on September 4, 2019. The fire is currently about 10,263 acres and is 60% contained.

The purpose of this closure is to provide safety for the public and for the firefighters who are engaged in fire suppression and rehabilitation efforts on and in the vicinity of the Taboose Fire. This restriction is necessary for the purposes of ensuring public safety until the wildfire can be managed. Closure of the area, trails, and roads shown on the attached map is necessary to help ensure that no one is injured within or near the active fire perimeter. The higher elevations and remoteness of the Taboose Fire make it difficult to locate visitors in a timely manner if they were to enter the closure area, hike on the forest trails, or travel on the forest roads listed in the order and shown on the attached map. Extreme fire activity has been observed and the unpredictable wind direction changes at higher elevations further contributes to the need to close the area, trails and roads to protect the public. The Taboose Fire has increased in size daily and is burning in an area only accessed and escaped by foot travel. This closure will remain in effect until the fire is declared out.

Scoping regarding this temporary trail closure involved discussions with cooperators including the incident management team currently managing the incident, adjacent National Parks and Forests, Inyo County Sheriff's Department, who had no objections.

I have concluded that this decision may be categorically excluded from documentation in an Environmental Impact Statement (EIS) or Environmental Assessment (EA) under the National Environmental Policy Act. This action falls within the category identified in 36 CFR 220.6(d)(1) - prohibitions to provide short-term resource protection or to protect public health and safety - and does not require documentation in a decision memo, decision notice, or record of decision. I have determined that there are no extraordinary circumstances associated with this temporary closure. Implementation of the decision may begin immediately.

For further information please contact Taro Pusina, Interagency Fire Chief,
760-873-2400



Forest Order No.05-04-50-19-10
Inyo National Forest
Taboose Fire Closures

Pursuant to 16 USC 551 and 36 CFR 261.50(a) and (b), and to provide for public safety, the following act is prohibited within the Inyo National Forest. This Order is effective from September 18, 2019 until the Taboose Fire is declared out.

1. Entering or being in the Taboose Fire Closure Area, as shown on Exhibit A and described in Exhibit B. 36 CFR 261.53(e).
2. Being on any National Forest System Road within the Taboose Fire Closure Area as shown on Exhibit A. 36 CFR 261.54(e).
3. Being on Forest Trail 3304 (Taboose Pass Trail) beginning at the Taboose Pass Trailhead and continuing to the the border with Sequoia National Park 36 CFR 261.55(a).
4. Being on Forest Trail 3303 (Red Lake Trail) beginning at the Red Lake Trailhead and continuing to Red Lake 36 CFR 261.55(a).

Pursuant to 36 CFR 261.50(e), the following persons are exempt from the Order:

1. Persons with a permit from the Forest Service specifically authorizing the otherwise prohibited act or omission.
2. Any Federal, State, or local Officer or member of an organized rescue or fire fighting force in the performance of an official duty.

This prohibition are in addition to the general prohibitions contained in 36 CFR Part 261, Subpart A.

A violation of this prohibition is punishable by a fine of not more than \$5,000 for an individual or \$10,000 for an organization, or imprisonment for not more than six months, or both. 16 USC 551 and 18 USC 3559, 3571, and 3581.

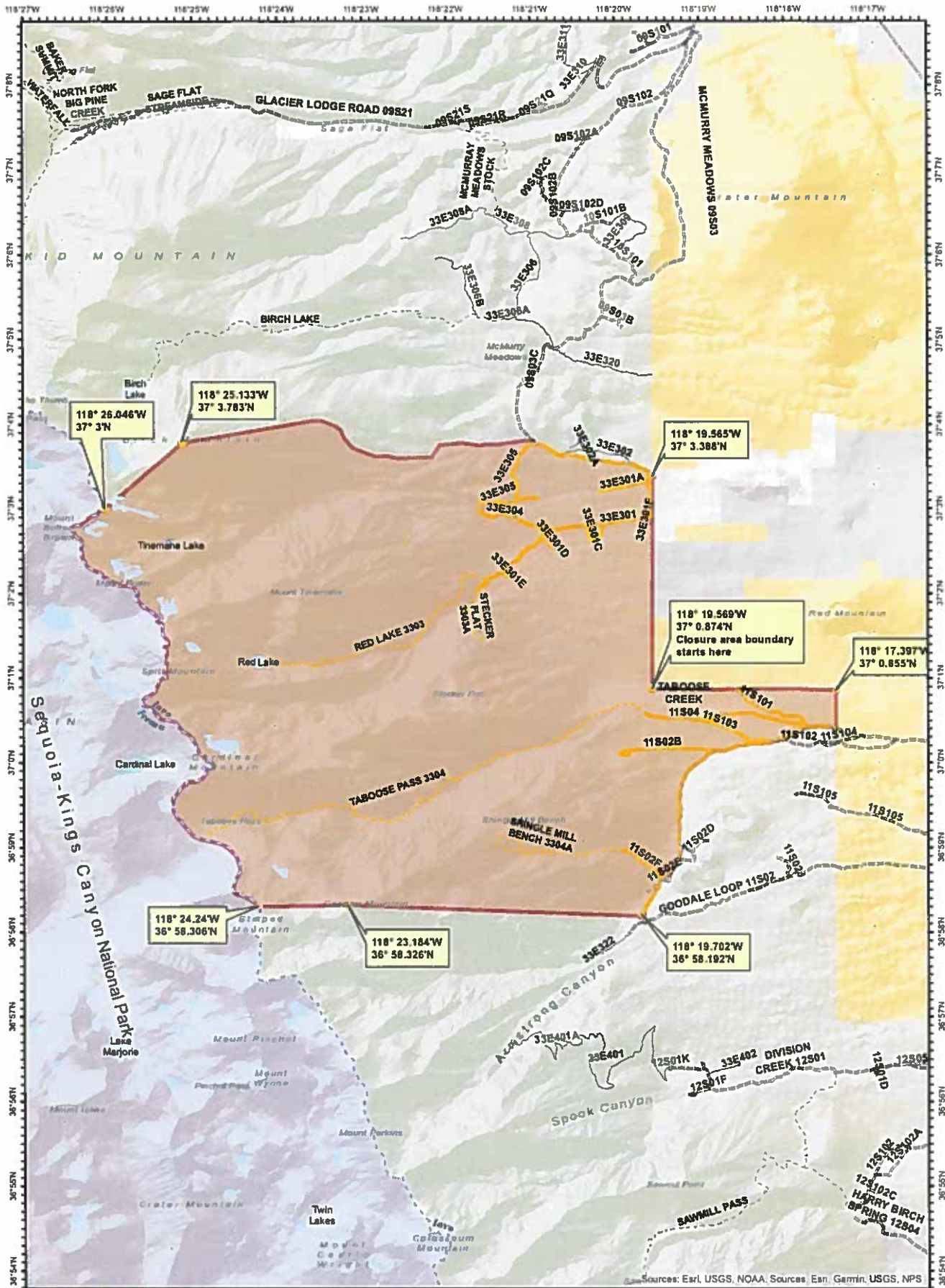
Executed in Bishop California on this 19th day of September, 2019.



Tammy Randall-Parker
Forest Supervisor
Inyo National Forest

ORDER NO. 05-04-50-19-10
USDA Forest Service
Inyo National Forest
Taboose Fire Closure
Exhibit B

The boundary of the Taboose Fire Closure Area begins at longitude 118 19.569W, latitude 37 0.874N, then continues west to Birch Mountain (longitude 118 25.133W, latitude 37 3.783N), then continues southwest to the border with Sequoia National Park (longitude 118 26.046W, latitude 37 3N), then continues south along the border with Sequoia National Park to Striped Mountain (longitude 118 23.24W, latitude 36 58.306N), then continues east to Goodale Mountain (longitude 118 23.184W latitude 36 58.326N), then continues north east to Shingle Mill Bench (longitude 118 21.433W, latitude 36 59.195N then continues north east to the interstation of Forest Road 11S02 (Goodale Loop Road) and Forest Road 11S02B then continues along the north west boundary of FS Road 11S02 (Goodale Loop Road) to its intersection with Forest Road 11S04, then continues east along Forest Road 11S04 to the Forest Boundary, then continues north along the Forest Boundary to longitude 118 17.397W, latitude 37 0.855N, then continues west along the Forest Boundary back to the starting point.



**Taboose Fire
CAINF002018**

**Exhibit A
Forest Order
05-04-50-19-10**

Closure Area

- | | |
|------------------------|----------------------------|
| Closure Points | Land Ownership |
| Closed Roads | Bureau of Land Management |
| Closed Standard Trails | Inyo National Forest |
| Closure Area | Kings Canyon National Park |
| Road | Local Government |
| Motorized Trail | Private |
| Standard Trail | |



Sources: Esri, USGS, NOAA, Sources, Esri, Garmin, USGS, NPS