

**ORDER NO. 14-19-07**

**SOUTH FIRE CLOSURE**

**SHASTA-TRINITY NATIONAL FOREST**

Pursuant to 16 USC 551 and 36 CFR 261.50(a) and (b), and to provide for public safety, the following acts are prohibited within the Shasta-Trinity National Forest. This Order is effective from October 3, 2019, until the South Fire is declared out.

1. Going into or being upon National Forest System lands within the South Fire Closure Area. The South Fire Closure Area boundary begins at the intersection of Forest Trail No. 09W39 (South Fork Cottonwood Creek) and the Shasta-Trinity National Forest boundary (Section 15 Township 26N, Range 9W, MDM), then continues north along the western edge of Forest Trail No. 09W39 to its intersection with Forest Trail No. 09W34 (Sanford Ridge) (Section 31 Township 27N, Range 9W, MDM), then continues north along the western edge of Forest Trail No. 09W34 to its intersection with Forest Trail No. 09W36 (Humboldt) (Section 20 Township 27N, Range 9W, MDM), then continues east along the northern edge of Forest Trail No. 09W36 to its intersection with Forest Trail No. 09W36A (Low Gap/ Humboldt Tie) (Section 20 Township 27N, Range 9W, MDM), then continues north along the western edge of Forest Trail No. 09W36A to its intersection with Forest Road No. 27N07 (Humboldt) (Section 20 Township 27N, Range 9W, MDM), then continues east along the northern edge of Forest Road No. 27N07 to its intersection with Forest Road No. 27N26 (Middle Ridge) (Section 32 Township 27N, Range 9W, MDM), then continues south along the eastern edge of Forest Road No. 27N26 to its intersection with Forest Road No. 27N06 (Tomhead Mountain) (Section 30 Township 27N, Range 8W, MDM), then continues south along the eastern edge of Forest Road No. 27N06 to its intersection with northern edge of Section 1 Township 26N, Range 9W, MDM, then continues due east along the northern edge of the section line to its intersection with the eastern edge of Section 5 Township 26N, Range 8W, MDM, then continues due south along the eastern edge of the section line to its intersection with the Shasta-Trinity National Forest boundary (Section 5 Township 26N, Range 8W, MDM), then continues west and south along the Shasta-Trinity National Forest boundary back to the starting point, as shown on the attached map. 36 C.F.R. 261.52(e).
2. Being on any National Forest System road within the South Fire Closure Area, as shown on the attached map. 36 CFR 261.54(e).
3. Being on any National Forest System trail within the South Fire Closure Area, as shown on the attached map. 36 CFR 261.55(a).

Pursuant to 36 CFR 261.50(e), the following persons are exempt from this order:

1. Persons with a permit from the Forest Service specifically authorizing the otherwise prohibited act or omission.
2. Any Federal, State, or local officer, or member of an organized rescue or fire fighting force in the performance of an official duty.

These prohibitions are in addition to the general prohibitions in 36 CFR Part 261, Subpart A. A violation of these prohibitions is punishable by a fine of not more than \$5,000 for an individual or \$10,000 for an organization, or imprisonment for not more than six months, or both. 16 USC 551 and 18 USC 3559, 3571, and 3581.

Executed at Redding, California this 2<sup>nd</sup> day of October, 2019.



TERRI SIMON-JACKSON  
Acting Forest Supervisor

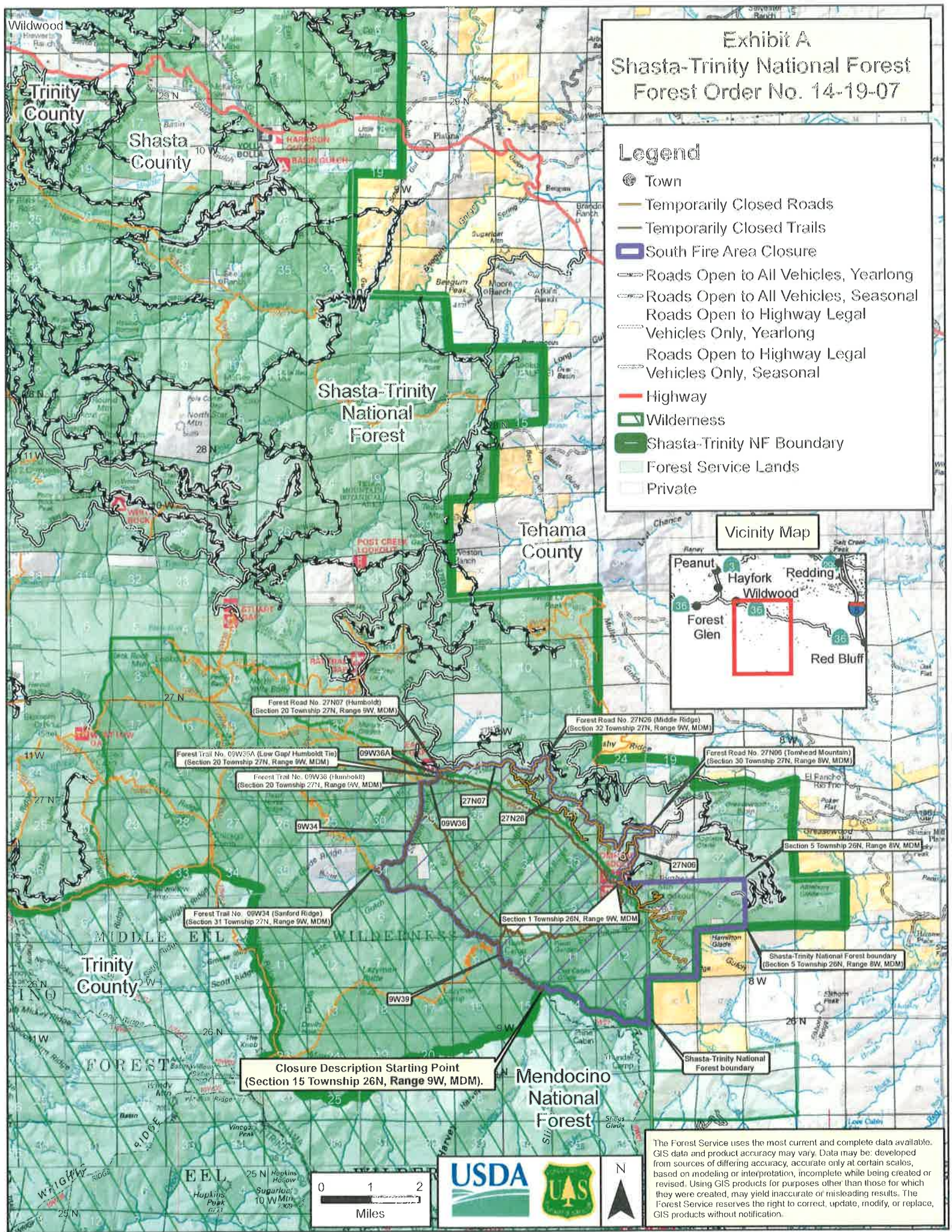


# Exhibit A Shasta-Trinity National Forest Forest Order No. 14-19-07

## Legend

- Town
- Temporarily Closed Roads
- Temporarily Closed Trails
- South Fire Area Closure
- Roads Open to All Vehicles, Yearlong
- Roads Open to All Vehicles, Seasonal
- Roads Open to Highway Legal Vehicles Only, Yearlong
- Roads Open to Highway Legal Vehicles Only, Seasonal
- Highway
- Wilderness
- Shasta-Trinity NF Boundary
- Forest Service Lands
- Private

## Vicinity Map



Closure Description Starting Point  
(Section 15 Township 26N, Range 9W, MDM).



The Forest Service uses the most current and complete data available. GIS data and product accuracy may vary. Data may be developed from sources of differing accuracy, accurate only at certain scales, based on modeling or interpretation, incomplete while being created or revised. Using GIS products for purposes other than those for which they were created, may yield inaccurate or misleading results. The Forest Service reserves the right to correct, update, modify, or replace, GIS products without notification.