

# SALMON-CHALLIS

# National Forest

## Winter 2022

### AT A GLANCE

The Salmon-Challis National Forest covers 4.3 million acres in east-central Idaho.

February 14, 2022

### Did You Know?

**F**orest Service has launched a robust, 10-year strategy to squarely address this wildfire crisis in the places where it poses the most immediate threats to communities. The strategy, called "Confronting the Wildfire Crisis: A Strategy for Protecting Communities and Improving Resilience in America's Forests," combines a historic investment of congressional funding with years of scientific research and planning into a national effort that will dramatically increase the scale of forest health treatments over the next decade. Learn more—><https://www.fs.usda.gov/managing-land/wildfire-crisis>



Upper Swauger Lake



"If you truly love nature, you will find beauty everywhere." Laura Ingalls Wilder

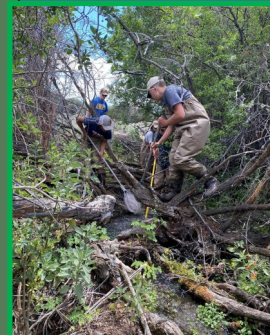
#### WILDFIRE CRISIS strategy

#### CONFRONTING THE WILDFIRE CRISIS

The Forest Service wildfire crisis strategy combines an historic investment from congressional funding with years of scientific research and planning into a national effort that will dramatically increase the scale of forest health treatments.



Our office, with the exception of mission-critical activities, is operating virtually until further notice. This means employees are teleworking and we are no longer doing any business in person. Maps can be purchased online at: <https://store.usgs.gov/maps> -- Annual Passes can be purchased online at: <https://store.usgs.gov/recreational-passes> -- Need a personal-use fuelwood permit? Call 208-756-5100 or your local district office to arrange for one to be picked up or mailed to you.



Corn Creek





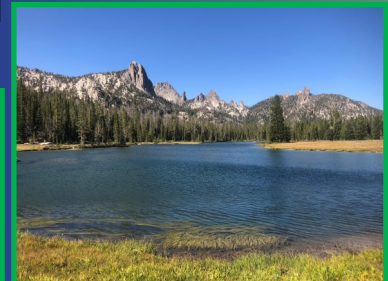
# Forest News

The Central Idaho Resource Advisory Committee provided funding in 2021 for 4 weeks of aspen habitat regeneration work by the Student Conservation Association (SCA) on the Withington Aspen Improvement Project. After fires burned through the area in 2003, conifer regrowth began to crowd out resprouting aspen groves and was diminishing vital winter habitat for elk and deer. The SCA crew was tasked with using handsaws and chainsaws to cut down conifers surrounding resprouting aspen. They were given a particularly dense and steep section of the project area to work on up Withington creek. The crew safely navigated the steep, matchstick like atmosphere of the project area, and set to work clearing a 40' radius around each healthy aspen sapling they could find. The work was meticulous with attention to detail and quality being emphasized throughout the project. Each conifer sapling was cut individually and low enough to the ground to prevent re-growth to the greatest extent possible.



Withington Aspen Improvement Project

In 2021, the Selway Bitterroot Frank Church Foundation removed over nine (9) pounds of trash, over 2,000 trees, and maintained over 58 miles of trail in the Frank Church River of No Return Wilderness. Photo: Before and after clearing a section of Waterfall Creek Trail.



Welcome Lake

Student Conservation Association (SCA) crews assisted with 6 weeks of project work for the North Zone Trails department. The crew's efforts included a 2-week hitch on the Continental Divide Trail, sandwiched between projects on McKim Creek, Williams Creek, Stein Gulch, and Mukluk Trail. More than 12 miles of trail were maintained including over 200 trees cleared from the trails, repairing a bridge crossing, and using a grip-hoist to rip stumps from a rerouted section of the CDT.



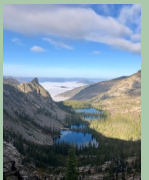
## SALMON-CHALLIS NATIONAL FOREST

*Forest Supervisor—Chuck Mark*

*Deputy Forest Supervisor—Heather DeGeest*

**208-756-5100**

Frankly Speaking Newsletter:  
<http://bit.ly/fsfcrnw>



[fs.usda.gov/scnf/](https://fs.usda.gov/scnf/)



[twitter.com/salmonchallisnf](https://twitter.com/salmonchallisnf)



[facebook.com/salmonchallisnf/](https://facebook.com/salmonchallisnf/)



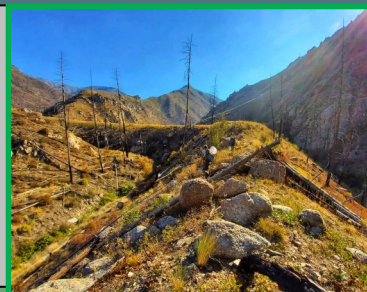
[scnf.oucell.com](https://scnf.oucell.com)

Trail maintenance on the south zone of the Salmon-Challis National Forest is a highlight of the season for all members who participate in these projects. SCA members spent 6 weeks working on projects throughout the south zone, including Boulder Creek, Hunter Creek, Five Mile Creek, Eleven Mile Creek, Lake Creek, and Hurst Canyon. The crew also assisted with the end of season closeout tasks at Custer historic site. Brushing trails and intensive rock and timber turnpike structures were constructed to improve the trails through various muddy sections. The crew completed 19 miles of brushing and clearing along with maintenance on 100's of water bars, and 900 ft. of turnpike construction.



## Welcome!

Alix Piven—Archeologist  
Liz Dolinar—Archeologist  
Michelle Platt—Archeologist  
Larry Vogel—Forest Fleet Manager  
Lance Pekus—Watershed/Soils



What are your plans for the weekend?  
#GetOutdoors