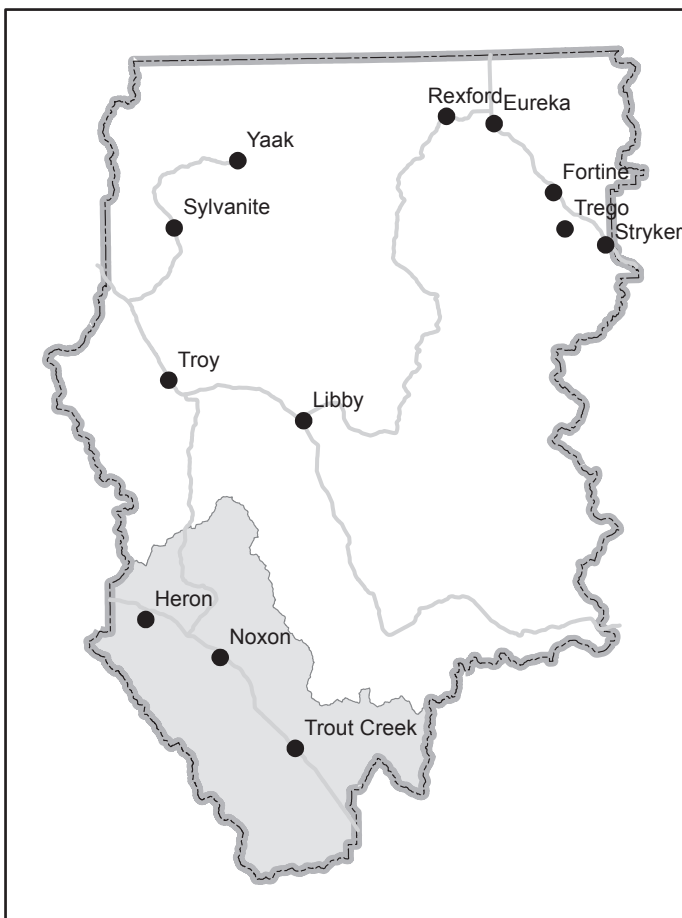




Motor Vehicle Use Map Kootenai National Forest Cabinet Ranger District

VICINITY MAP



INFORMATION SOURCES

For various reasons access conditions may change during the year. To assure that you have the most current information, please contact the Cabinet Ranger District.

Cabinet Ranger District
Cabinet Ranger Station
2693 Highway 200
Troy Creek, MT 59874
Phone: 406-627-5533

Other information sources:

Forest Supervisor's Office
31374 US Hwy 2
Libby, MT 59923-3022
Phone: 406-293-6211
www.fs.usda.gov/kootenai

Rexford & Fortine Ranger Districts
949 US Highway 93 N
Eureka, MT 59917
Phone: 406-296-2536

Libby Ranger District
Caneau Gulch Ranger Station
12557 Highway 37
Libby, MT 59923
Phone: 406-293-7773

Three Rivers Ranger District
Troy Ranger Station
12888 US Hwy 2
Troy, MT 59935
Phone: 406-296-4693



- Travel and recreate with minimal impact.
- Educate the environment and the rights of others.
- Educate yourself, plan and prepare before you go.
- Allow for future use of the outdoors by leaving it better than you found it.
- Discover the rewards of responsible recreation.

For more information on Tread Lightly! go to www.treadlightly.org or call 1-800-956-9900.

In accordance with Federal civil rights law and U.S. Department of Agriculture (USDA) civil rights regulations and policies, the USDA, its Agencies, offices, and employees, and institutions participating in or administering USDA programs are prohibited from discriminating based on race, color, national origin, religion, sex, gender identity (including gender expression), sexual orientation, disability, age, marital status, family/parental status, income derived from a public assistance program, political beliefs, or reprisal or retaliation for prior civil rights activity, in any program or activity conducted or funded by USDA (not all bases apply to all programs). Remedies and complaint filing deadlines vary by program or incident.

Persons with disabilities who require alternative means of communication for program information (e.g., Braille, large print, audiotape, American Sign Language, etc.) should contact the responsible Agency or USDA's TARGET Center at (202) 720-2600 (voice and TTY) or contact USDA through the Federal Relay Service at (800) 877-8339. Additionally, program information may be made available in languages other than English.

To file a program discrimination complaint, complete the USDA Program Discrimination Complaint Form, AD-3027, found online at http://www.ascr.usda.gov/complaint_filing_cust.html and at any USDA office or write a letter addressed to USDA and provide in the letter all of the information requested in the form. To request a copy of the complaint form, call (866) 632-6992. Submit your completed form or letter to USDA by: (1) mail: U.S. Department of Agriculture, Office of the Assistant Secretary for Civil Rights, 1400 Independence Avenue, SW, Washington, D.C. 20250-9410; (2) fax: (202) 690-7442; or (3) email: program.intake@usda.gov.

USDA is an equal opportunity provider, employer, and lender.

PURPOSE AND CONTENTS OF THIS MAP

The designations shown on this motor vehicle use map (MVUM) were made by the responsible official pursuant to 36 CFR 212.51, are effective as of the date on the front cover of this MVUM, and will remain in effect until superseded by next year's MVUM.

Michael B. Brown
Forest Supervisor, Kootenai National Forest

It is the responsibility of the user to acquire the current MVUM. This MVUM shows the National Forest System roads, National Forest System trails, and the areas on National Forest System lands in the Cabinet Ranger District that are designated for motor vehicle use pursuant to 36 CFR 212.51. This MVUM also identifies the vehicle classes allowed on each route and in each area, and any seasonal restrictions that apply on those routes and in those areas.

Designation of a road, trail, or area for motor vehicle use by a particular class of vehicle under 36 CFR 212.51 should not be interpreted as encouraging or inviting use or implying that the road, trail, or area is passable, actively maintained, or safe for travel. Motor vehicle designations include parking along designated routes and at facilities associated with designated routes when it is safe to do so and when not causing damage to National Forest System resources. Seasonal weather conditions and natural events may render designated roads and trails impassable for extended periods. Designated areas may contain dangerous or impassable terrain. Many designated roads and trails may be passable only by high-clearance vehicles or four-wheel-drive vehicles. Maintenance of designated roads and trails will depend on available resources, and many may receive little maintenance.

This motor vehicle use map identifies those roads, trails, and areas designated for motor vehicle use under 36 CFR 212.51 for the purpose of enforcing the prohibition at 36 CFR 261.13. This is a limited purpose. The other public roads are shown for information and navigation purposes only and are not subject to designation under the Forest Service travel management regulation.

These designations apply only to National Forest System roads, National Forest System trails, and areas on National Forest System lands.

PROHIBITIONS

It is prohibited to possess or operate a motor vehicle on National Forest System lands on the Kootenai National Forest other than in accordance with these designations (36 CFR 261.13).

Violators of 36 CFR 261.13 are subject to a fine of up to \$5,000, imprisonment for up to 6 months, or both (18 U.S.C. 357(e)). This prohibition applies regardless of the presence or absence of signs.

This map does not display nonmotorized uses, over-snow vehicle uses, or other facilities and attractions on the Cabinet Ranger District. Obtain forest visitor information from the local national forest office.

Designated roads, trails and areas may also be subject to temporary emergency closures. As a visitor, you must comply with signs notifying you of such restrictions. A national forest may issue an order to close a road, trail, or area on a temporary basis to protect the life, health, or safety of forest visitors or the natural or cultural resources in these areas. Such temporary and/or emergency closures are consistent with the Travel Management Rule (36 CFR 212.52 (b)), 36 CFR 261 (subpart B).

The designation "road or trail open to all motor vehicles" does not supersede State traffic law.

OPERATOR RESPONSIBILITIES

Operating a motor vehicle on National Forest System roads, National Forest System trails, and in areas on National Forest System lands carries a greater responsibility than operating that vehicle in a city or other developed setting. Not only must you know and follow all applicable traffic laws, you need to show concern for the environment as well as other forest users. The misuse of motor vehicles can lead to the temporary or permanent closure of any designated road, trail, or area. As a motor vehicle operator, you are also subject to State traffic law, including State requirements for licensing, registration, and operation of the vehicle in question.

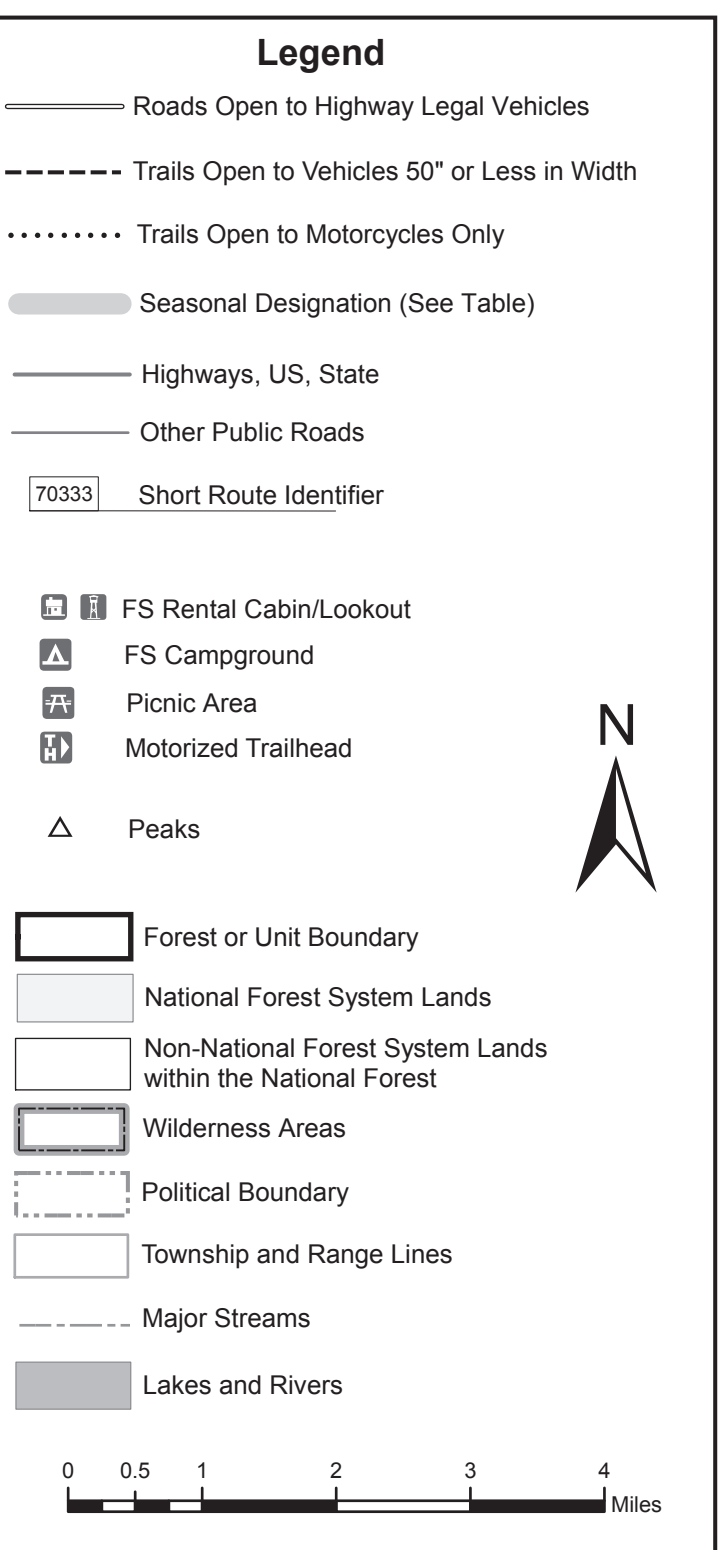
Motor vehicle use, especially off-highway vehicle use, involves inherent risks that may cause property damage, serious injury, and possibly death to participants. Drive cautiously and anticipate rough surfaces and features, such as snow, mud, vegetation, and water crossings common to remote driving conditions. By your participation, you voluntarily assume full responsibility for these damages, risks, and dangers. Take care at all times to protect yourself and those under your responsibility.

Much of the Cabinet Ranger District is remote. Medical assistance may not be readily available. Cellular telephones do not work in many areas of the Cabinet Ranger District. Take adequate food, water, first-aid supplies, and other equipment appropriate for the conditions and expected weather.

ALWAYS REMEMBER TO RESPECT PRIVATE LAND! PROTECT YOUR PRIVILEGE. STAY ON DESIGNATED ROADS AND TRAILS AND IN DESIGNATED AREAS.

Read and understand this map in its entirety. If you have questions, please contact the Kootenai National Forest for clarification.

As a motor vehicle operator on a National Forest System road, trail, or area you must comply with this map, as well as all Federal, State, and local laws and regulations. Compliance with these rules is your responsibility.



EXPLANATION OF LEGEND ITEMS

Roads Open to Highway Legal Vehicles Only:

These roads are open only to motor vehicles licensed under State law for general operation on all public roads within the state.

Trails Open to Vehicles 50 inches or Less in Width:

Trails open only to motor vehicles less than 50 inches in width at the widest point on the vehicle.

Trails Open to Motorcycles Only:

These trails are open only to motorcycles. Sidecars are not permitted.

Seasonal Designation:

This symbol, used in conjunction with one of the other road or trail symbols, indicates that the road or trail is open only during certain portions of the year. Refer to Seasonal and Special Designation Table for further instructions.

Other Public Roads and Trails:

These symbols are used to show routes the Forest Service does not have jurisdiction over and has not designated for motorized use. These symbols are part of the reference layers showing connections to towns and cities outside the forest boundary. Access on these roads is not guaranteed.

Short Route Identifier:

This symbol is used for roads that are too short to show a symbol type on the map. The symbol contains the number of the road or trail. Users should refer to the corresponding number in the Short Route Table for designation information.

Motorized Trail Access:

This symbol indicates a trailhead for access to a motorized route. Not all motorized routes have trailheads and those that do may range from primitive to developed.



Dispersed Camping

Motor vehicle use of off-designated roads and/or trails for the purpose of dispersed camping is permitted on National Forest Lands for up to 300 feet from the centerline of the road and/or trail.

Campsite selection must be completed by non-motorized means, and then accessed by the most direct route without causing resource damage. Cutting, damaging, or harming (such as driving over) trees or vegetation is not allowed to access dispersed camping spots. (CFR 261.15)

It is prohibited to operate any vehicle of National Forest System, State or County Roads in a manner which damages or unreasonably disturbs the land, wildlife, or vegetative resources. (CFR 261.15(h))

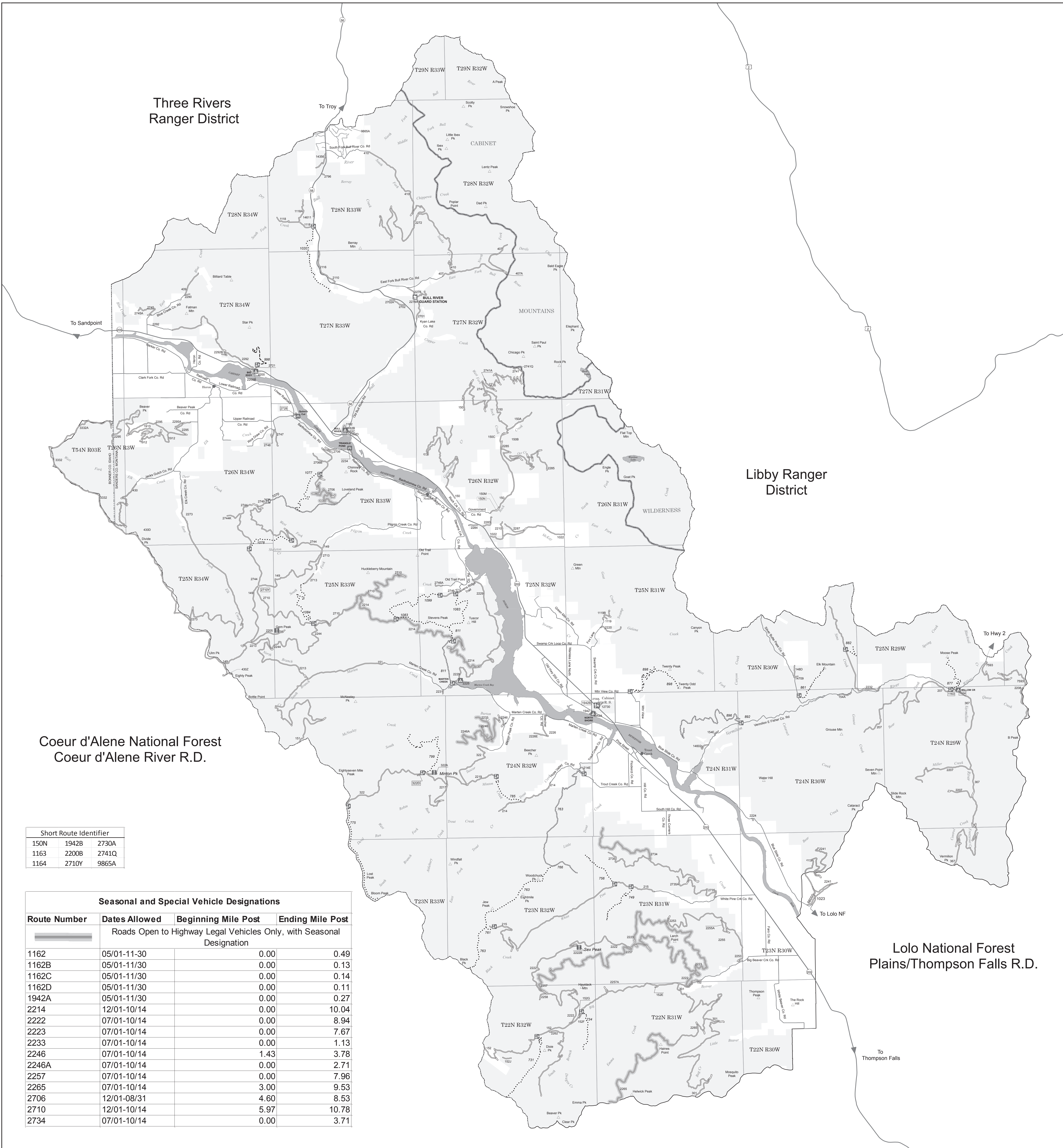
Moving, going around or over or past barriers on roads (i.e., gates, rocks, berms, barriers, signs, etc.) is not allowed. (CFR 261.12)

In all developed recreation sites such as developed campgrounds, picnic sites, trailheads, boat launches, etc., it is prohibited to operate or park a motor vehicle or trailer except in places developed or designated for that use. (CFR 261.16 (m))

Parking
Motor vehicles may be parked up to 30 feet from the edge of the road surface when it is safe to do so without causing damage to NFR resources or facilities, unless prohibited by state law, a traffic sign, or an order. (36 CFR 261.16)

Campgrounds

All roads within the Bull River and North Shore Campgrounds are open when the campground is open



Coeur d'Alene National Forest Coeur d'Alene River R.D.

Short Route Identifier			
150N	1942B	2730A	
1163	2200B	2741Q	
1164	2710Y	9865A	

Seasonal and Special Vehicle Designations

Route Number	Dates Allowed	Beginning Mile Post	Ending Mile Post
Roads Open to Highway Legal Vehicles Only, with Seasonal Designation			
1162	05/01-11-30	0.00	0.49
1162B	05/01-11-30	0.00	0.13
1162C	05/01-11-30	0.00	0.14
1162D	05/01-11-30	0.00	0.11
1942A	05/01-11-30	0.00	0.27
2214	12/01-10-14	0.00	10.04
2222	07/01-10-14	0.00	8.94
2223	07/01-10-14	0.00	7.67
2233	07/01-10-14	0.00	1.13
2246	07/01-10-14	1.43	3.78
2246A	07/01-10-14	0.00	2.71
2257	07/01-10-14	0.00	7.96
2265	07/01-10-14	3.00	9.53
2706	12/01-08/31	4.60	8.53
2710	12/01-10-14	5.97	10.78
2734	07/01-10-14	0.00	3.71

Libby Ranger District

Lolo National Forest Plains/Thompson Falls R.D.