

The designations shown on this motor vehicle use map (MVUM) were made by the responsible official pursuant to 36 CFR 212.51; are effective as of the date on the front cover of this MVUM; and will remain in effect until superseded by next year's MVUM.

It is the responsibility of the user to acquire the current MVUM. This MVUM shows the National Forest System roads that are closed to motor vehicles. The National Forest System roads are divided into three categories: 1) roads that are closed to all motor vehicles, 2) roads that are closed to motor vehicles except for those that are registered with the Forest Service, and 3) roads that are closed to motor vehicles except for those that are registered with the Forest Service and those that are registered with the Forest Service. The National Forest System roads are divided into three categories: 1) roads that are closed to all motor vehicles, 2) roads that are closed to motor vehicles except for those that are registered with the Forest Service, and 3) roads that are closed to motor vehicles except for those that are registered with the Forest Service and those that are registered with the Forest Service.

It is prohibited to possess or operate a motor vehicle on National Forest System lands on the Kootenai National Forest other than in accordance with these designations (36 CFR 261.13)

Violators of 36 CFR 261.13 are subject to a fine of up to \$5,000, imprisonment for up to 6 months, or both (18 U.S.C. 3571(e)). This prohibition applies regardless of the presence or absence of signs.

Designated roads, trails and areas may also be subject to temporary, emergency closures. As a visitor, you must comply with signs notifying you of such restrictions. A national forest may issue an order to close a road, trail or area on a temporary basis to protect the life, health, or safety of forest visitors or the natural or cultural resources in these areas. Such temporary and/or emergency closures are consistent with the Travel Management Rule (36 CFR 212.52 (b), 36 CFR 261 subpart B).

OPERATOR RESPONSIBILITIES

Operating a motor vehicle on National Forest System

Motor vehicle use, especially off-highway vehicle use, involves inherent risks that may cause property damage, serious injury, and possibly death to participants. Drive cautiously and anticipate rough surfaces and features, such as snow, mud, vegetation, and water crossings common to remote driving conditions. By your participation, you voluntarily assume full responsibility for these damages, risks, and dangers. Take care at all times to protect yourself and those under your responsibility.

Much of the Three Rivers Ranger District is remote. Medical assistance may not be readily available. Cellular telephones do not work in many areas of the Three Rivers Ranger District. Take adequate food, water, first-aid supplies, and other equipment appropriate for the conditions and expected weather.

Read and understand this map in its entirety. If you have questions, please contact the Three Rivers Ranger District for clarification.



It is your responsibility to know where you are and what federal and state regulations are in place for hunting and access.

Stay on designated routes.
Any violations on public lands should be reported

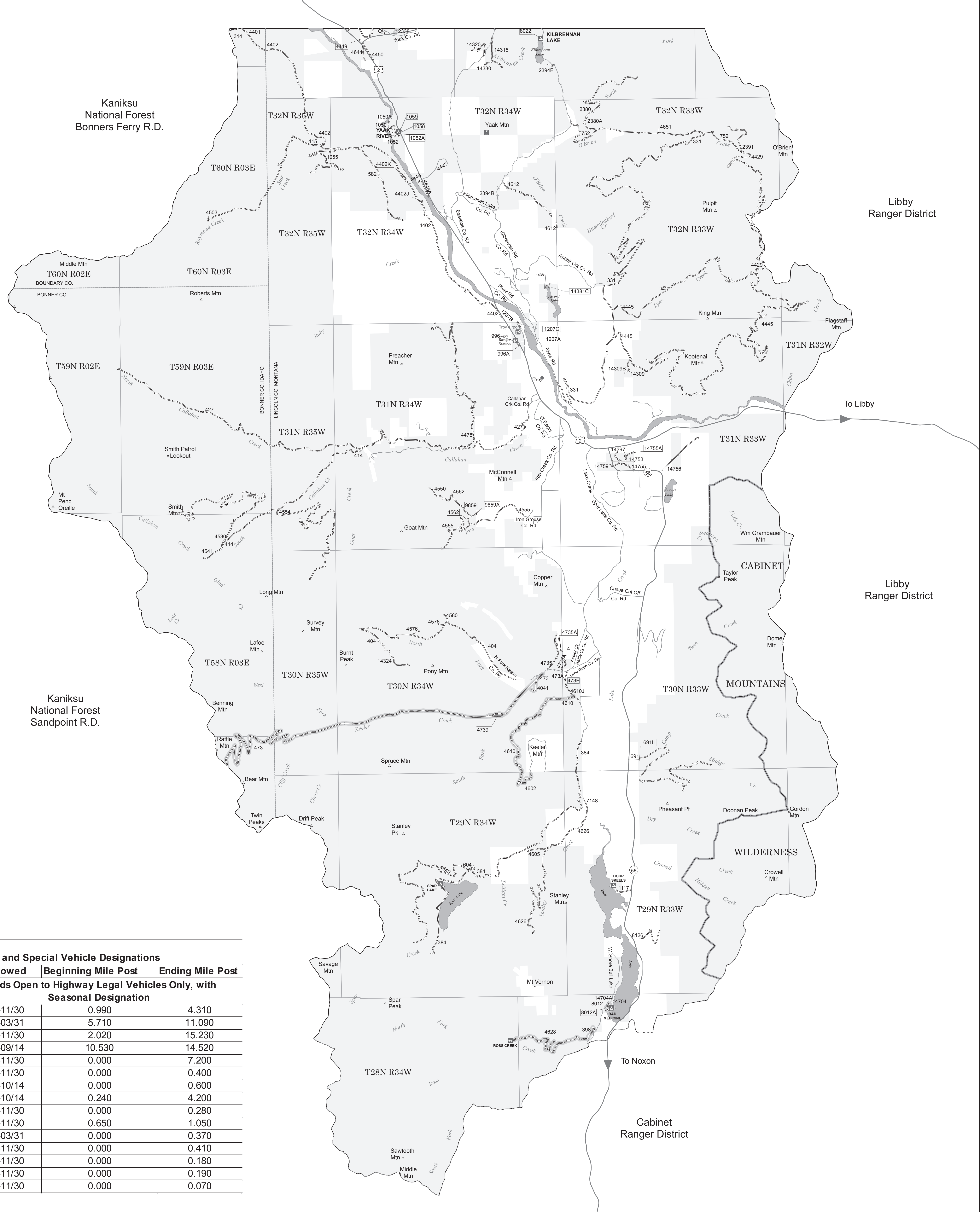
Report a Violation
1-800-TIP-MONT
1-800-847-6668

Persons with disabilities who require alternative means of communication for program information (e.g., Braille, large print, audiotope, American Sign Language, etc.) should contact the responsible Agency or USDA's TARGET Center at (202) 720-2600 (voice and TTY) or contact USDA through the Federal Relay Service at (800) 877-8339. Additionally, program information may be made available in languages other than English.

USDA is an equal opportunity provider, employer, and lender.

873-0114

Kaniksu
National Forest
Bonners Ferry R.D.



Roads Open to Highway Legal Vehicles Only:

These roads are open only to motor vehicles licensed under State law for general operation on all public roads within the state.

Seasonal Designation:

This symbol, used in conjunction with one of the other road or trail symbols, indicates that the road or trail is open only during certain portions of the year. Refer to Seasonal and Special Designation Table for further instructions.

Roads Open to Highway Legal Vehicles Only:

These roads are open only to motor vehicles licensed under State law for general operation on all public roads within the state.

Seasonal Designation:

Dispersed Camping:

This symbol is used along with a designated road or trail to indicate limited cross-country motor vehicle use within a specific distance of that route, solely for the purpose of dispersed camping and/or game retrieval. The dots indicate where this activity is permitted. They may be on the left, right, or both sides of the route. Refer to the Dispersed Camping and Game Retrieval Table for more details.

Other Public Roads:
 _____ Highways, U.S., State, County
 _____ Other Public Roads

These symbols are used to show routes the Forest Service does not have jurisdiction over and has not designated for motorized use. These symbols are part of the reference layer showing connections to towns and cities outside the forest boundary. Access on these roads is not guaranteed.

Short Route Identifier:

70333

This symbol is used for roads that are too short to show a symbol type on the map. The symbol contains the number of the road or trail. Users should refer to the corresponding number in the Short Route Table for designation information.



Motor vehicle use off of designated roads and/or trails for the purpose of dispersed camping is permitted on National Forest Lands for up to 300 feet from the centerline of the road and/or trail.

Motor vehicle use off of designated roads and/or trails for the purpose of dispersed camping is permitted on National Forest Lands for up to 300 feet from the centerline of the road and/or trail.

Campsite selection must be completed by non-motorized means, and then accessed by the most direct route without causing resource damage. Cutting, damaging, or harming (such as driving over) trees or vegetation is not allowed to access dispersed camping spots. (CFR 261.15)

It is prohibited to operate any vehicle off National Forest System, State or County Roads in a manner which damages or unreasonably disturbs the land, wildlife, representative resources. (CFR 281.45(b))

Moving, going around or over or past barriers on roads (i.e., gates, rocks, berms, barriers, signs, etc) is not allowed. (CFR 261.12)

In all developed recreation sites such as developed campgrounds, picnic sites, trailheads, boat launches, etc., it is prohibited to operate or park a motor vehicle or trailer except in places developed or designated for that use. (CFR 261.16 (m))

Parking

Motor vehicles may be parked up to 30 feet from the edge of the road surface when it is safe to do so without causing damage to NFS resources of facilities, unless prohibited by state law, a traffic sign, or an order. (36 CFR 261.54)

Motor vehicles may be parked up to 30 feet from the edge of the road surface when it is safe to do so without causing damage to NFS resources of facilities, unless prohibited by state law, a traffic sign, or an order. (36 CFR 261.54)

Campgrounds

All roads within the Caribou, Dorr Skeels, Kilbrennan, Pete Creek, Red Top, Spar Lake, Whitetail, Yaak Falls and Yaak River campgrounds are open when the campground is open.

All roads within the Caribou, Dorr Skeels, Kilbrennan, Pete Creek, Red Top, Spar Lake, Whitetail, Yaak Falls and Yaak River campgrounds are open when the campground is open.