








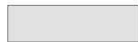
This is a high-elevation area and roads may receive heavy snowfall above 2,000 ft. Most Forest Service roads in the area are single lane with turnouts. High clearance 4x4 vehicles with chains are recommended to access these roads.

**Mt. Baker-Snoqualmie National Forest  
Snoqualmie Ranger District**


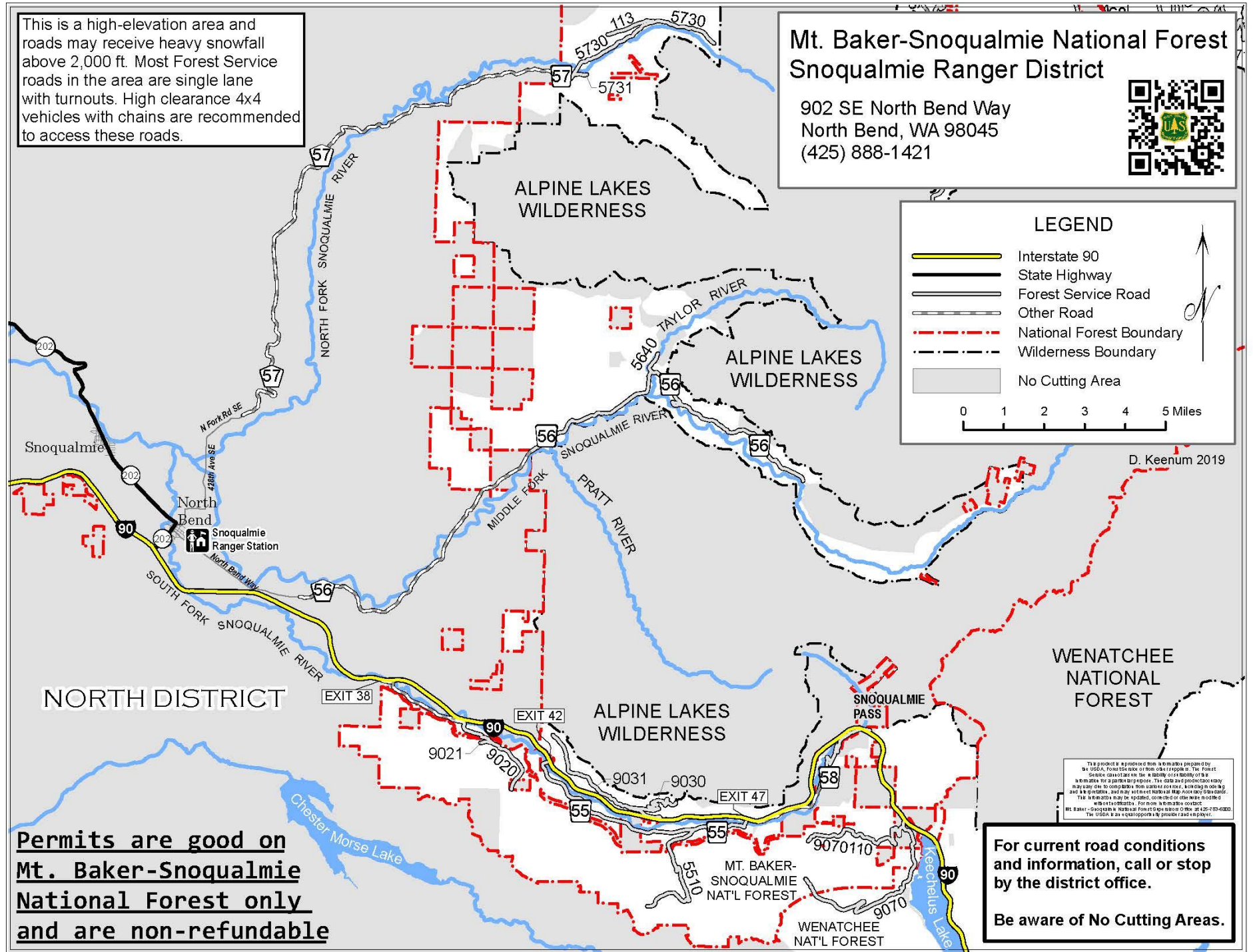
902 SE North Bend Way  
North Bend, WA 98045  
(425) 888-1421



**LEGEND**

-  Interstate 90
-  State Highway
-  Forest Service Road
-  Other Road
-  National Forest Boundary
-  Wilderness Boundary
-  No Cutting Area

0 1 2 3 4 5 Miles

D. Keenum 2019

**Permits are good on  
Mt. Baker-Snoqualmie  
National Forest only  
and are non-refundable**

**For current road conditions  
and information, call or stop  
by the district office.  
  
Be aware of No Cutting Areas.**

The product is produced from information prepared by the USFS. Forest Service or from other sources. The Forest Service does not warrant the accuracy or reliability of the information for any particular purpose. The user and producer may not be liable for damages from any use of the information, including but not limited to, loss of life, property, or other damages. The information may be updated, corrected, or otherwise modified without notice. For more information contact Mt. Baker-Snoqualmie National Forest Supervisor at (425) 888-0200. The USFS is an equal opportunity provider and employer.