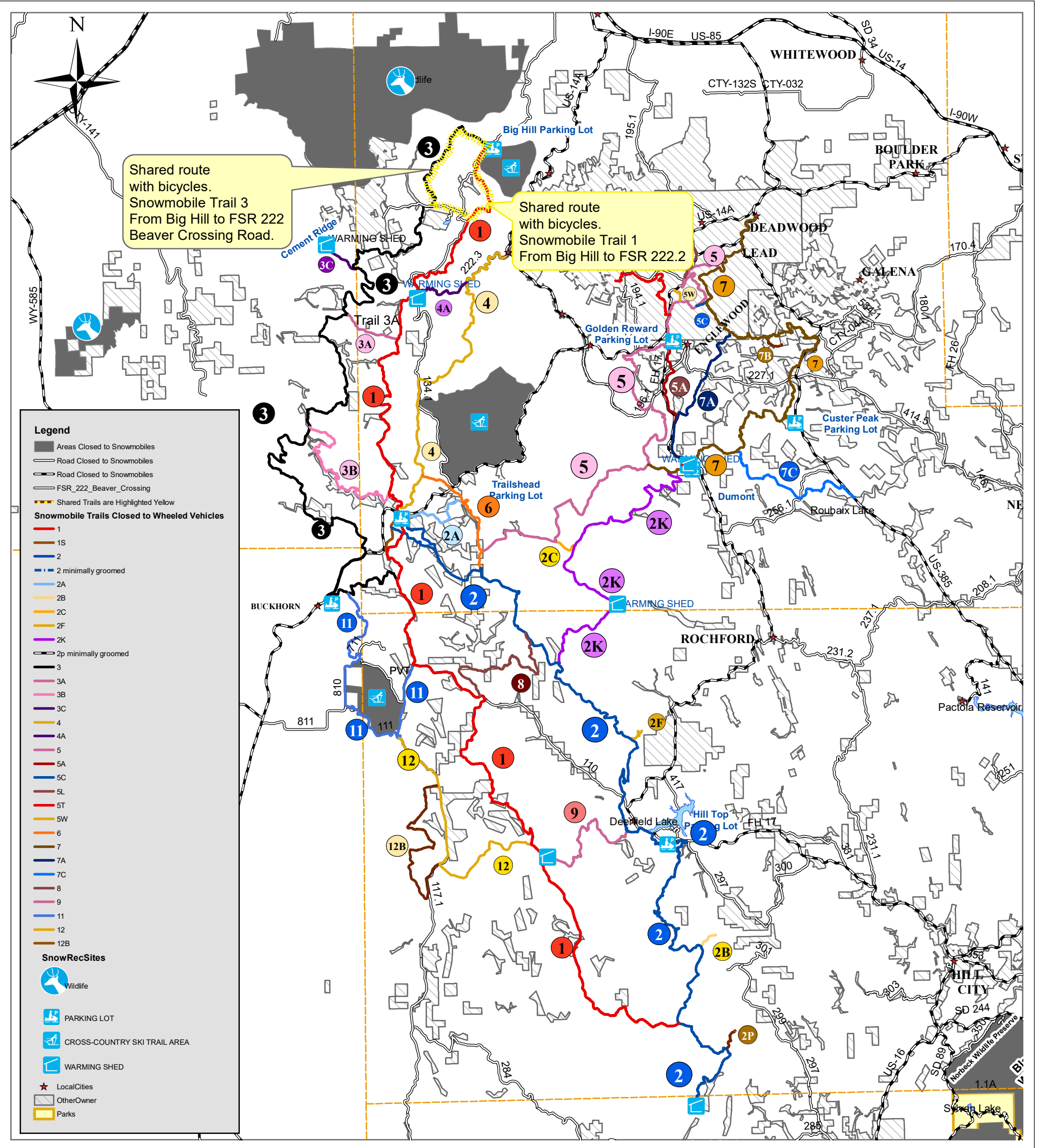


Black Hills National Forest South Dakota and Wyoming 2019_20



Appendix A Restricted Area Order #BKF 145-2019, Map 1 of 2



Approximately 415 miles of marked and groomed trails are located on the Black Hills National Forest in South Dakota and Wyoming through cooperative agreements between the U.S. Forest Service and South Dakota Game Fish and Parks, Recreation Division and Wyoming State Parks and Historical Sites. Parking areas which serve this trail system are signed, plowed, and have sanitary facilities, maps, and information available. During the designated snowmobile season, the groomed trail system is closed to wheeled vehicles. Exceptions are shown on map for portions of trails 1, 3 and A which are shared with bicycles.

Some plowed roads and areas are closed to snowmobiles to prevent conflicts with logging traffic, wildlife winter range, and cross country ski trails. These areas and roads are shown on this map and/or marked on the ground.

There may be additional restrictions on the occupancy and use of the National Forest. These restrictions may pertain to campfires, camping, parking, possession of animals, etc. To avoid an inconvenience, you are encouraged to contact a local Forest Service office for current information.

Forest Supervisor's Office and
Hell Canyon Ranger District
1019 N. 5th Ave.
Custer, SD 57730
(605) 673-9200

Northern Hills Ranger Dist.
2014 N. Main
Spearfish, SD 57783
(605) 642-4622

Bearlodge Ranger District
101 S. 21st St.
Sundance, WY 82729
(307) 283-1361

Hell Canyon Ranger Dist.
1225 Washington Blvd.
Newcastle, WY 82701
(307) 746-4622

Mystic Ranger District
8221 South Highway 16
Rapid City, SD 57702
(605) 343-1567