

Silver City Ranger District – Gila NF

FINAL Evaluation Map Identifying Levels of Wilderness Characteristics

This is only Step 2 of a required 4-step process identifying and evaluating lands that may be suitable for inclusion in the National Wilderness Preservation System, and determine whether to recommend any of the evaluated lands to Congress for wilderness designation. **Congress reserves the authority to designate wilderness through legislation.**

The evaluation step examines the level of wilderness characteristics possessed by the lands identified in the Inventory (step 1 of the process). Keep in mind that this is only an early step in a larger process and inclusion of an area in the evaluation step does not mean the area will be proposed or managed as a wilderness. After the Evaluation step is completed, the evaluations will be used to inform the Forest Supervisor's selection of which areas, or modified areas, are to be analyzed in each of the forest plan revision Environmental Impact Statement (EIS) alternatives and consideration of all factors that have relevance if an area were to be recommended, not just wilderness characteristics.

[Forest Service Handbook 1909.12 Chapter 70](#) provides criteria for the evaluation of wilderness characteristics.

Generally, these are:

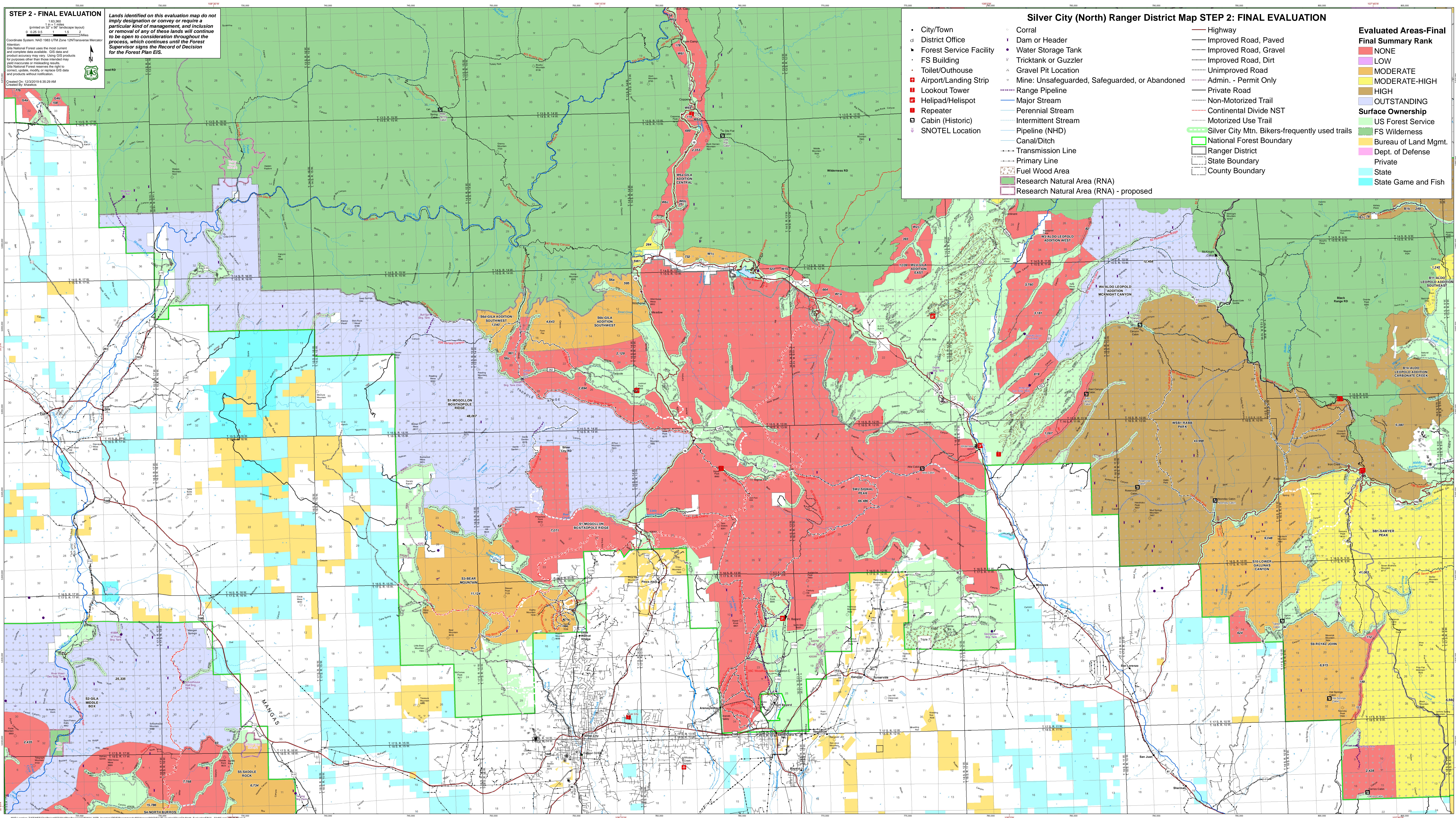
1. Sufficient Size to be Practicable to Manage as Wilderness (if less than 5,000 acres size)
2. Manageability to Protect Wilderness Characteristics (factors other than size)
3. Apparent Naturalness
4. Opportunities for Solitude or Primitive and Unconfined Recreation
5. Other Features of Value

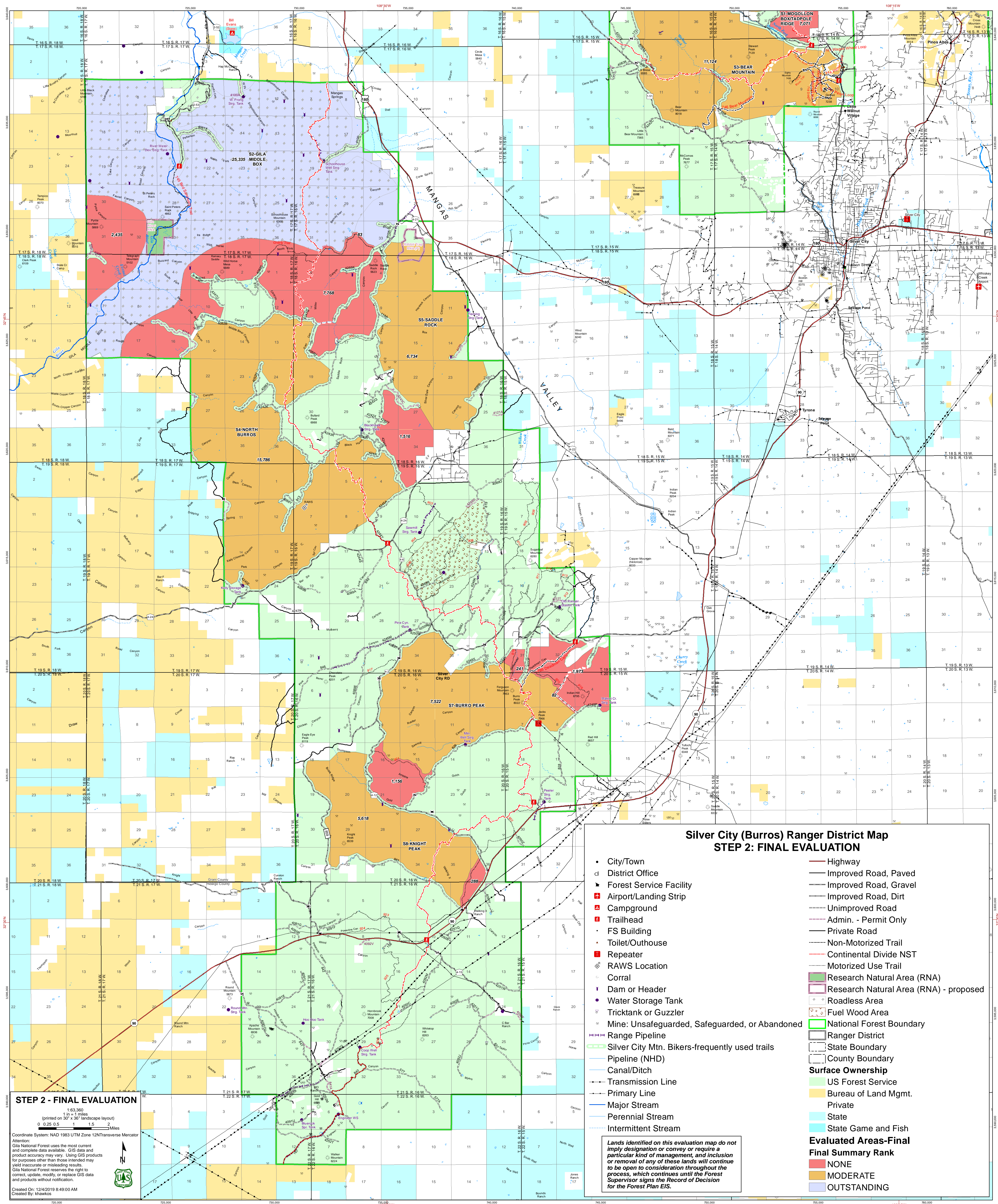
The [Evaluation Process of Lands Inventories for Potential Wilderness Characteristics Final Process Paper](#) outlines in detail the process employed to accomplish the Evaluation. This process paper was developed with input and feedback from stakeholders during community and technical meetings and draft review periods.

NOTICE:

Lands shown on this series of Evaluation maps do not imply designation or convey or require a particular kind of management, and inclusion or removal of any of these lands will continue to be open to consideration throughout the process until the Forest Supervisor signs the Record of Decision for the Forest Plan EIS. Copies of the FINAL Evaluation Maps will be made available in both electronic and hardcopy form (upon request: please email SM.FS.gilaplan@usda.gov or call 575-388-8280).

For more information on the Plan Revision Process, including the Inventory and Evaluation for Wilderness Characteristics Process, please visit the [Gila Forest Plan Revision webpage](#).






STEP 2 - FINAL EVALUATION

1:63,360
1 in = 1 miles
(printed on 30" x 36" landscape layout)
0 0.25 0.5 1 1.5 2 Miles

Coordinate System: NAD 1983 UTM Zone 12N Transverse Mercator

Attention: Gila National Forest uses the most current and complete data available. GIS data and product accuracy may vary. Using GIS products for purposes other than those intended may yield inaccurate or misleading results. Gila National Forest reserves the right to correct, update, modify, or replace GIS data and products without notification.

Created on: 12/4/2019 8:49:00 AM
Created by: khawkos



**Silver City (Burros) Ranger District Map
STEP 2: FINAL EVALUATION**

- City/Town
- ◻ District Office
- ▴ Forest Service Facility
- ✈ Airport/Landing Strip
- ⬢ Campground
- ⬢ Trailhead
- FS Building
- Toilet/Outhouse
- ◻ Repeater
- ◻ RAWs Location
- ◻ Corral
- Dam or Header
- Water Storage Tank
- ◻ Tricktank or Guzzler
- Mine: Unsafeguarded, Safeguarded, or Abandoned
- ▬ Range Pipeline
- ▬ Silver City Mtn. Bikers-frequently used trails
- ▬ Pipeline (NHD)
- ▬ Canal/Ditch
- ▬ Transmission Line
- ▬ Primary Line
- ▬ Perennial Stream
- ▬ Interim Stream

- ▬ Highway
- ▬ Improved Road, Paved
- ▬ Improved Road, Gravel
- ▬ Improved Road, Dirt
- ▬ Unimproved Road
- ▬ Admin. - Permit Only
- ▬ Private Road
- ▬ Non-Motorized Trail
- ▬ Motorized Use Trail
- ▬ Research Natural Area (RNA)
- ▬ Research Natural Area (RNA) - proposed
- ▬ Roadless Area
- ▬ Fuel Wood Area
- ▬ National Forest Boundary
- ▬ Ranger District
- ▬ State Boundary
- ▬ County Boundary

Surface Ownership

- ▬ US Forest Service
- ▬ Bureau of Land Mgmt.
- ▬ Private
- ▬ State
- ▬ State Game and Fish

Evaluated Areas-Final

Final Summary Rank

- ▬ NONE
- ▬ MODERATE
- ▬ OUTSTANDING

Lands identified on this evaluation map do not imply designation or convey or require a particular kind of management, and inclusion or removal of any of these lands will continue to be open to consideration throughout the process, which continues until the Forest Supervisor signs the Record of Decision for the Forest Plan EIS.