

Forest Order No.05-04-50-20-01  
Inyo National Forest  
Taboose Fire Closures

Pursuant to 16 USC 551 and 36 CFR 261.50(a) and (b), and to provide for public safety, the following act is prohibited within the Inyo National Forest. This Order is effective from January 10, 2020, until December 31, 2020.

1. Entering or being in the Taboose Fire Closure Area, as shown on Exhibit A and described in Exhibit B. 36 CFR 261.52(e).
2. Being on any National Forest System Road within the Taboose Fire Closure Area, as shown on Exhibit A. 36 CFR 261.54(e).
3. Being on Forest Trail 3304 (Taboose Pass Trail) beginning at the Taboose Pass Trailhead and continuing west to the border of the Inyo National Forest and the Sequoia National Park. 36 CFR 261.55(a).
4. Being on Forest Trail 3303 (Red Lake Trail) beginning at the Red Lake Trailhead and continuing to Red Lake. 36 CFR 261.55(a).


Pursuant to 36 CFR 261.50(e), the following persons are exempt from the Order:

1. Persons with a permit from the Forest Service specifically authorizing the otherwise prohibited act or omission.
2. Any Federal, State, or local Officer or member of an organized rescue or fire fighting force in the performance of an official duty.

This prohibition are in addition to the general prohibitions contained in 36 CFR Part 261, Subpart A.

A violation of this prohibition is punishable by a fine of not more than \$5,000 for an individual or \$10,000 for an organization, or imprisonment for not more than six months, or both. 16 USC 551 and 18 USC 3559, 3571, and 3581.

Executed in Bishop California on this 9<sup>th</sup> day of January, 2020.

  
Tammy Randall-Parker  
Forest Supervisor  
Inyo National Forest

**ORDER NO. 05-04-50-20-01**

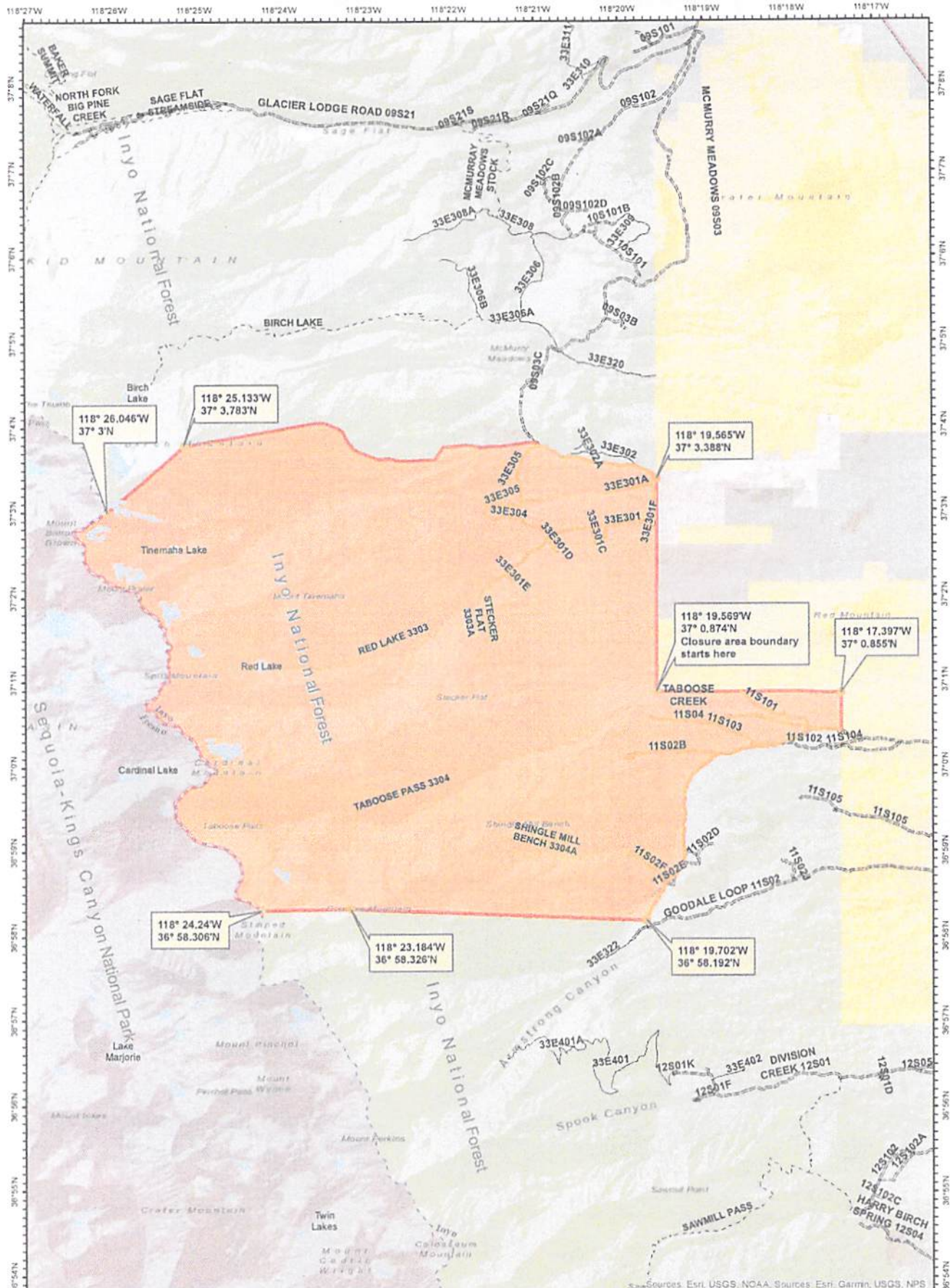
**USDA Forest Service**

**Inyo National Forest**

**Taboose Fire Closure**

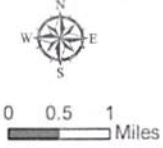
**Exhibit B**

The boundary of the Taboose Fire Closure Area begins at longitude 118 19.569W, latitude 37 0.874N, then continues 3.0 miles north to longitude 118 19.565W, latitude 37 3.482N, then continues 5 miles west to Birch Mountain (longitude 118 25.133W, latitude 37 3.783N), then continues 1.21 miles southwest to the border with the Sequoia National Park (longitude 118 26.046W, latitude 37 3N), then continues 6.9 miles south along the border with Sequoia National Park to Striped Mountain (longitude 118 24.231W, latitude 36 57.960N), then continues 1.05 miles east to Goodale Mountain (longitude 118 23.184W latitude 36 58.326N), then continues 3.23 miles to longitude 118 19.688W, latitude 36 58.270N, then continues north east 3.60 miles along the north west border of Forest Road 11S02, then continues east 0.4 miles on Forest Road 11S04 to the Inyo National Forest boundary, then continues north 0.5 miles along the Inyo National Forest boundary to longitude 118 17.397W, latitude 37 0.855N, then continues west 2.0 miles along the Inyo National Forest boundary back to the starting point.



**Taboose Fire**  
**CAINF002018**  
**Exhibit A**  
**Forest Order**  
**05-04-50-20-01**  
**Closure Area**

- |                        |                            |
|------------------------|----------------------------|
| Closure Points         | <b>Land Ownership</b>      |
| Closed Roads           | Bureau of Land Management  |
| Closed Standard Trails | Inyo National Forest       |
| Closure Area           | Kings Canyon National Park |
| Road                   | Local Government           |
| Motorized Trail        | Private                    |
| Standard Trail         |                            |



Source: Esri, USGS, NOAA, Sources: Esri, Garmin, USGS, NPS

Date: January 9<sup>th</sup>, 2020

To: File

From: Tammy Randall-Parker, Inyo National Forest Supervisor *JRP*

Re: Forest Order No. 05-04-50-20-01

This document explains my rationale and the regulatory basis for implementing a Forest Order closing the area, trails, and roads in the vicinity of the Taboose Fire on the Inyo National Forest. The Taboose Fire is 10 miles Southwest of Big Pine, California. The fire was first detected on September 4, 2019. The fire is 10,293 acres and is 100% contained and controlled. This closure is necessary to protect public safety in the Taboose Fire burn area as a result of hazardous post-fire conditions and protect critical natural and cultural resources.

As outlined in the September 22, 2019, Burned Area Emergency Response (BAER) report, the Taboose Fire has caused extensive damage to area trails and roads. The BAER report, which is attached, outlines the extensive damage and the work that will be required to repair the area. The BAER report provides that there is a threat of landslides and mudslides in the area during storm events as a result of the damage caused by the fire.

The Taboose fire created conditions on the Taboose Pass Trail and Red Lake Trail that present significant hazards to human life and health. The slopes above the trails are very steep, with angles approaching the angle of repose. Rocks on these slopes have lost their supporting vegetation and pose rock-fall hazards on the trails. Soils are exposed with dry ravel present on the hillslopes and trails. The area is characterized by mass wasting processes (past debris flows) with evidence of past debris flows throughout the burn area. Hyper-concentrated water flows, flooding, and debris flow risk is elevated during storm events due to new post-fire conditions. Recreationists within the fire area would be at risk within the Taboose, Red Mountain, and Tinemaha drainages, as well as smaller drainages throughout the fire area.

Based on the potential for debris flows, flooding, and rock falls, the BAER Team identified a serious risk to the public, employees, and Forest Service cooperators. As outlined in the BAER report, the probability of damage or loss is "very likely," the magnitude of consequences should we have a major rain event is "major," and the risk level is "very high."

Scoping regarding this temporary trail closure involved discussions with cooperators including the incident management team currently managing the incident, adjacent National Parks and Forests, Inyo County Sheriff's Department, and local Tribes who had no objections. Pre-historic and historic heritage sites are located throughout the fire footprint a temporary closure will allow



vegetation to recover and limit the exposure of sites to looting and other damage.

I have concluded that this decision may be categorically excluded from documentation in an Environmental Impact Statement (EIS) or Environmental Assessment (EA) under the National Environmental Policy Act. This action falls within the category identified in 36 CFR 220.6(d)(1) - prohibitions to provide short-term resource protection or to protect public health and safety - and does not require documentation in a decision memo, decision notice, or record of decision. I have determined that there are no extraordinary circumstances associated with this temporary closure. Implementation of the decision may begin immediately.

For further information please contact Taro Pusina, Interagency Fire Chief, 760-873-2400