

Black Hills National Forest Motor Vehicle Use Map

Black Hills National Forest Headquarters
1019 N. 5th Street, Custer, SD 57730
Phone: (605) 673-0200

Beardlog Ranger District
P.O. Box 680
101 S. 21st Street
Sundance, WY 82229
Phone: (307) 263-1381

Northern Hills Ranger District
2014 N. Main Street
Spearfish, SD 57783
Phone: (605) 642-4622

Black Hills National Forest
Website:
www.fs.usda.gov/blackhills
In Case of Emergency,
Dial 911

VICINITY MAP

South Dakota
Wyoming

Beardlog Ranger District
Northern Hills Ranger District
Mystic Ranger District
Hell Canyon Ranger District

INFORMATION SOURCES

Black Hills National Forest Headquarters
1019 N. 5th Street, Custer, SD 57730
Phone: (605) 673-0200

Beardlog Ranger District
P.O. Box 680
101 S. 21st Street
Sundance, WY 82229
Phone: (307) 263-1381

Northern Hills Ranger District
2014 N. Main Street
Spearfish, SD 57783
Phone: (605) 642-4622

Black Hills National Forest
Website:
www.fs.usda.gov/blackhills
In Case of Emergency,
Dial 911

FOREST SERVICE
U.S. DEPARTMENT OF AGRICULTURE

tread lightly!

Travel and recreate with minimum impact.

Respect the environment and the rights of others.

Educate yourself. Plan and prepare before you go.

Allow for future use of the outdoors by leaving it better than you found it.

Discover the rewards of responsible recreation.

For more information on Tread Lightly!, go to:
www.treadlightly.org or call 1-800-966-9900.

The U.S. Department of Agriculture (USDA) prohibits discrimination in all its programs and activities on the basis of race, color, national origin, age, disability, and where applicable, sex, marital status, familial status, parental status, religion, sexual orientation, genetic information, political beliefs, reprisal, or because all or part of an individual's income is derived from any public assistance program. (Not all prohibited bases apply to all programs.) Persons with disabilities who require alternative means for communication of program information (Braille, large print, audio tape, etc.) should contact USDA's TARGET Center at (202) 720-2600 (voice and TDD). To file a complaint of discrimination, write to USDA, Director, Office of Civil Rights, 1400 Independence Avenue, S.W., Washington, D.C. 20250-9410, or call (800) 795-3272 (voice) or (202) 720-6382 (TDD). USDA is an equal opportunity provider and employer.

PURPOSE AND CONTENTS OF THIS MAP

The designations shown on this motor vehicle use map (MVUM) were made by the responsible official pursuant to 36 CFR 212.51, are effective as of the date on the front cover of this MVUM, and will remain in effect until superseded by next year's MVUM. It is the responsibility of the user to acquire the current MVUM. This MVUM shows the National Forest System roads, National Forest System trails, and the areas on National Forest System lands in the Black Hills National Forest that are designated for motor vehicle use pursuant to 36 Code of Federal Regulations (CFR) 212.51. This MVUM also identifies the vehicle classes allowed on each route and in each area, and any seasonal restrictions that apply on those routes and in those areas.

Designation of a road, trail, or area for motor vehicle use by a particular class of vehicle under 36 CFR 212.51 should not be interpreted as encouraging or inviting use or implying that the road, trail or area is passable, actively maintained, or safe for travel. Motor vehicle designations include parking along designated routes and at facilities associated with designated routes when it is safe to do so and when not causing damage to National Forest System resources. Seasonal weather conditions and natural events may render designated roads and trails impassable for extended periods. Designated areas may contain dangerous or impassable terrain. Many designated roads and trails may be passable only by high-clearance vehicles or four-wheel-drive vehicles. Maintenance of designated roads and trails will depend on available resources, and many may receive little maintenance.

This motor vehicle use map identifies those roads, trails, and areas designated for the motor vehicle use under 36 CFR 212.51 for the purpose of enforcing the prohibition at 36 CFR 261.13. This is a limited purpose. The other public roads are shown for information and navigation purposes only and are not subject to designation under the Forest Service travel management regulation.

These designations apply only to National Forest System roads, National Forest System trails, and areas on National Forest System lands.

PROHIBITIONS

It is prohibited to possess or operate a motor vehicle on National Forest System lands on the Black Hills National Forest other than in accordance with these designations (CFR 261.13).

Violators of 36 CFR 261.13 are subject to a fine of up to \$5,000, imprisonment for up to 6 months, or both (18 U.S.C. 3571(e)). This prohibition applies regardless of the presence or absence of signs.

This map does not display nonmotorized uses, over-snow uses, or other facilities and attractions on the Black Hills National Forest. Obtain forest visitor information from the local national forest office.

Designated roads, trails and areas may also be subject to temporary, emergency closures. As a visitor, you must comply with signs notifying you of such restrictions. A national forest may issue an order to close a road, trail or area on a temporary basis to protect the life, health, or safety of forest visitors or the natural or cultural resources in these areas. Such temporary and/or emergency closures are consistent with the Travel Management Rule (36 CFR 212.52 (b), 36 CFR 261 subpart B).



OPERATOR RESPONSIBILITIES

Operating a motor vehicle on National Forest System roads, National Forest System trails, and in areas on National Forest System lands carries a greater responsibility than operating that vehicle in a city or other developed setting. Not only must you know and follow all applicable traffic laws, you need to show concern for the environment as well as other forest users. The misuse of motor vehicles can lead to the temporary or permanent closure of any designated road, trail, or area. As a motor vehicle operator, you are also subject to State traffic law, including State requirements for licensing, registration, and operation of the vehicle in question.

Motor vehicle use, especially off-highway vehicle use, involves inherent risks that may cause property damage, serious injury, and possibly death to participants. Drive cautiously and anticipate rough surfaces and features, such as snow, mud, vegetation, and water crossings common to remote driving conditions. By your participation, you voluntarily assume full responsibility for these damages, risks, and dangers. Take care at all times to protect yourself and those under your responsibility.

Much of the Black Hills National Forest is remote. Medical assistance may not be readily available. Cellular telephones do not work in many areas of the Black Hills National Forest. Take adequate food, water, first-aid supplies, and other equipment appropriate for the conditions and expected weather.

ALWAYS REMEMBER TO RESPECT PRIVATE LAND! PROTECT YOUR PRIVILEGE. STAY ON DESIGNATED ROADS AND TRAILS AND IN DESIGNATED AREAS.

Read and understand this map in its entirety. If you have questions, please contact the Black Hills National Forest for clarification.

As a motor vehicle operator on a National Forest System road, trail, or area you must comply with this map, as well as all Federal, State, and local laws and regulations. Compliance with these rules is your responsibility.

BLANKET TRAVEL MANAGEMENT STATEMENTS WYOMING Winter Months

In the Wyoming portion of the Black Hills National Forest, designated motorized routes may be closed to wheeled vehicles by a forest Over Snow Travel Order during winter months to provide safety to the public as routes are utilized as part of the Wyoming Snowmobile Trail System.

Current information may be obtained at one of the following websites:

Black Hills National Forest Special Orders and Public Notices website:
http://www.fs.usda.gov/alerts/blackhills/alerts-notices

Wyoming State Snowmobile Trail Maps:
http://wyostrails.state.wy.us/

Legend

- Roads Open to Highway Legal Vehicles Only
- Roads Open to All Vehicles
- Trails Open to All Vehicles
- Trails Open to Vehicles 50" or Less in Width
- Special Designation: Trails Open to Vehicles 62" or Less in Width
- Seasonal Designation
- Dispersed Camping and/or Elk Retrieval
- Elk Retrieval (ER) Zone
- Interstate
- Highways, US, State
- Other Public Roads
- Area Open to Cross Country Travel
- Motorized Trailhead
- FS Campground
- Picnic Area
- Information Site
- Peaks
- Forest or District Boundary
- National Forest System Lands
- Non-National Forest System Lands within the National Forest
- State or County Boundary
- Township and Range Lines
- Section Lines
- Lakes

1:85,000

N

EXPLANATION OF LEGEND ITEMS

Roads Open to Highway Legal Vehicles Only:

These roads are open only to motor vehicles licensed under State law for general operation on all public roads within the state.

Roads Open to All Vehicles:

These roads are open to all motor vehicles, including smaller off-highway vehicles that may not be licensed for highway use (but not to oversize or overweight vehicles under State traffic law).

Trails Open to All Vehicles:

These trails are open to all motor vehicles, including both highway legal and nonhighway legal vehicles.

Trails Open to Vehicles 50 inches or Less in Width:

A recreational vehicle primarily designed for off-road use which is fifty (50) inches or less in width.

Special Designation: Trails Open to Vehicles 62 inches or Less in Width:

Trails open only to motor vehicles 62 inches or less in width - measurement is taken from the outside of one tire to the outside of the opposite tire, measured using the widest tire tread width (front or rear).

Other Public Roads:

Interstate
Highways, U.S., State
Other Public Roads

These symbols show routes the Forest Service does not have jurisdiction over and has not designated for motorized use. These symbols are part of the reference layers showing connections to towns and cities outside the forest boundary.

Area Open to Cross Country Travel:

Beginner Practice Area less than 5 acres in size open to cross-country travel. Bearlog Pit and Spearfish Quarry

Motorized Trail Access:

This symbol indicates a trailhead for access to a motorized route. Not all motorized routes have trailheads and those that do may range from primitive to developed.

Seasonal Designation:

This symbol, used in conjunction with one of the other road or trail symbols, indicates that the road or trail is open during certain portions of the year. Refer to Seasonal Designation Tables

Dispersed Camping and/or Elk

This dotted symbol is used along with a designated road symbol to indicate limited cross-country motor vehicle use within a specific distance of that road, solely for the purpose of dispersed camping and/or elk retrieval. The dots indicate where this activity is permitted. They may be on the left, right, or both sides of the road. Refer to DISPERSED CAMPING and ELK RETRIEVAL Table for specific information.

Elk Retrieval (ER) Zone:

This symbol indicates limited cross-country motor vehicle use within a specific distance of roads, solely for the purpose of elk retrieval (South Dakota Only). Refer to ELK RETRIEVAL Tables on back for specific information.

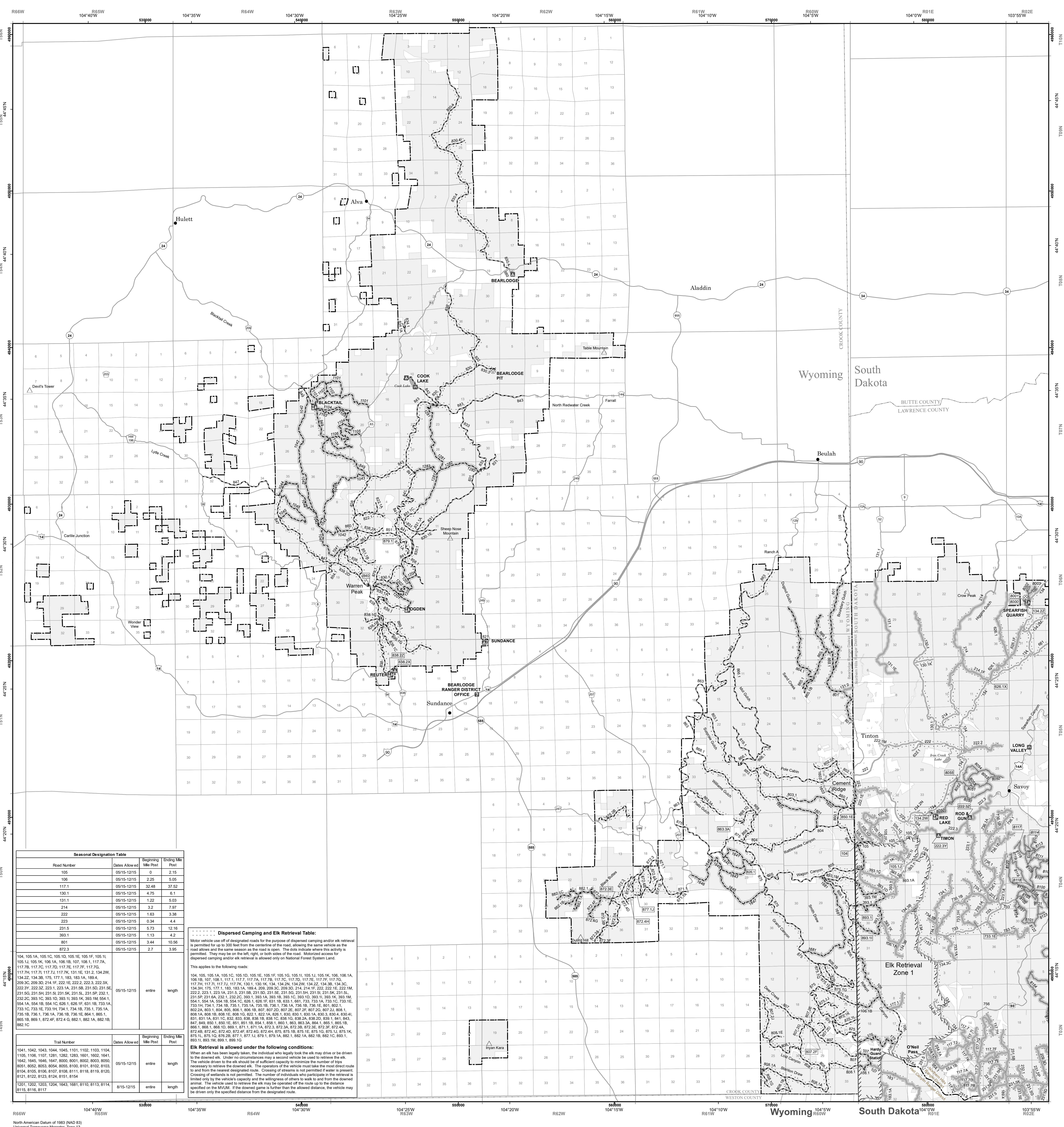
BLANKET TRAVEL MANAGEMENT STATEMENTS

Roads and Trails requiring Permits:
Motorized Trails in the Wyoming portion of the Black Hills National Forest are enrolled in the Wyoming ORV Program and require vehicles to display a Wyoming ORV Permit.

"Roads Open To All" in the Wyoming portion of the Black Hills National Forest that are enrolled in the Wyoming ORV Program require operators to have a Driver's License and vehicles to display a state license plate or a Wyoming ORV Permit.

Motorized Trails in the South Dakota portion of the Black Hills National Forest require vehicles to display a Black Hills National Forest Motorized Trail Permit.

"Roads Open To All" in the South Dakota portion of the Black Hills National Forest require operators to have a Driver's License and vehicles to display a state license plate or a Black Hills National Forest Motorized Trail Permit.



Seasonal Designation Table			
Road Number	Dates Allowed	Beginning Mile Post	Ending Mile Post
105	05/15-12/15	0	2.15
106	05/15-12/15	2.25	5.05
117.1	05/15-12/15	32.48	37.52
130.1	05/15-12/15	4.75	6.1
131.1	05/15-12/15	1.22	5.03
214	05/15-12/15	3.2	7.97
222	05/15-12/15	1.63	3.38
223	05/15-12/15	0.34	4.4
231.5	05/15-12/15	5.73	12.16
303.1	05/15-12/15	1.13	4.2
801	05/15-12/15	3.44	10.56
872.3	05/15-12/15	2.7	3.95
104, 105.1A, 105.1C, 105.1D, 105.1E, 105.1F, 105.1G, 105.1H, 105.1I, 105.1J, 105.1K, 105.1L, 105.1M, 105.1N, 105.1O, 105.1P, 105.1Q, 105.1R, 105.1S, 105.1T, 105.1U, 105.1V, 105.1W, 105.1X, 105.1Y, 105.1Z, 105.1AA, 105.1AB, 105.1AC, 105.1AD, 105.1AE, 105.1AF, 105.1AG, 105.1AH, 105.1AI, 105.1AJ, 105.1AK, 105.1AL, 105.1AM, 105.1AN, 105.1AO, 105.1AP, 105.1AQ, 105.1AR, 105.1AS, 105.1AT, 105.1AU, 105.1AV, 105.1AW, 105.1AX, 105.1AY, 105.1AZ, 105.1BA, 105.1BB, 105.1BC, 105.1BD, 105.1BE, 105.1BF, 105.1BG, 105.1BH, 105.1BI, 105.1BJ, 105.1BK, 105.1BL, 105.1BM, 105.1BN, 105.1BO, 105.1BP, 105.1BQ, 105.1BR, 105.1BS, 105.1BT, 105.1BU, 105.1BV, 105.1BW, 105.1BX, 105.1BY, 105.1BZ, 105.1CA, 105.1CB, 105.1CC, 105.1CD, 105.1CE, 105.1CF, 105.1CG, 105.1CH, 105.1CI, 105.1CJ, 105.1CK, 105.1CL, 105.1CM, 105.1CN, 105.1CO, 105.1CP, 105.1CQ, 105.1CR, 105.1CS, 105.1CT, 105.1CU, 105.1CV, 105.1CW, 105.1CX, 105.1CY, 105.1CZ, 105.1DA, 105.1DB, 105.1DC, 105.1DD, 105.1DE, 105.1DF, 105.1DG, 105.1DH, 105.1DI, 105.1DJ, 105.1DK, 105.1DL, 105.1DM, 105.1DN, 105.1DO, 105.1DP, 105.1DQ, 105.1DR, 105.1DS, 105.1DT, 105.1DU, 105.1DV, 105.1DW, 105.1DX, 105.1DY, 105.1DZ, 105.1EA, 105.1EB, 105.1EC, 105.1ED, 105.1EE, 105.1EF, 105.1EG, 105.1EH, 105.1EI, 105.1EJ, 105.1EK, 105.1EL, 105.1EM, 105.1EN, 105.1EO, 105.1EP, 105.1EQ, 105.1ER, 105.1ES, 105.1ET, 105.1EU, 105.1EV, 105.1EW, 105.1EX, 105.1EY, 105.1EZ, 105.1FA, 105.1FB, 105.1FC, 105.1FD, 105.1FE, 105.1FF, 105.1FG, 105.1FH, 105.1FI, 105.1FJ, 105.1FK, 105.1FL, 105.1FM, 105.1FN, 105.1FO, 105.1FP, 105.1FQ, 105.1FR, 105.1FS, 105.1FT, 105.1FU, 105.1FV, 105.1FW, 105.1FX, 105.1FY, 105.1FZ, 105.1GA, 105.1GB, 105.1GC, 105.1GD, 105.1GE, 105.1GF, 105.1GG, 105.1GH, 105.1GI, 105.1GJ, 105.1GK, 105.1GL, 105.1GM, 105.1GN, 105.1GO, 105.1GP, 105.1GQ, 105.1GR, 105.1GS, 105.1GT, 105.1GU, 105.1GV, 105.1GW, 105.1GX, 105.1GY, 105.1GZ, 105.1HA, 105.1HB, 105.1HC, 105.1HD, 105.1HE, 105.1HF, 105.1HG, 105.1HH, 105.1HI, 105.1HJ, 105.1HK, 105.1HL, 105.1HM, 105.1HN, 105.1HO, 105.1HP, 105.1HQ, 105.1HR, 105.1HS, 105.1HT, 105.1HU, 105.1HV, 105.1HW, 105.1HX, 105.1HY, 105.1HZ, 105.1IA, 105.1IB, 105.1IC, 105.1ID, 105.1IE, 105.1IF, 105.1IG, 105.1IH, 105.1II, 105.1IJ, 105.1IK, 105.1IL, 105.1IM, 105.1IN, 105.1IO, 105.1IP, 105.1IQ, 105.1IR, 105.1IS, 105.1IT, 105.1IU, 105.1IV, 105.1IW, 105.1IX, 105.1IY, 105.1IZ, 105.1JA, 105.1JB, 105.1JC, 105.1JD, 105.1JE, 105.1JF, 105.1JG, 105.1JH, 105.1JI, 105.1JJ, 105.1JK, 105.1JL, 105.1JM, 105.1JN, 105.1JO, 105.1JP, 105.1JQ, 105.1JR, 105.1JS, 105.1JT, 105.1JU, 105.1JV, 105.1JW, 105.1JX, 105.1JY, 105.1JZ, 105.1KA, 105.1KB, 105.1KC, 105.1KD, 105.1KE, 105.1KF, 105.1KG, 105.1KH, 105.1KI, 105.1KJ, 105.1KK, 105.1KL, 105.1KM, 105.1KN, 105.1KO, 105.1KP, 105.1KQ, 105.1KR, 105.1KS, 105.1KT, 105.1KU, 105.1KV, 105.1KW, 105.1KX, 105.1KY, 105.1KZ, 105.1LA, 105.1LB, 105.1LC, 105.1LD, 105.1LE, 105.1LF, 105.1LG, 105.1LH, 105.1LI, 105.1LJ, 105.1LK, 105.1LL, 105.1LM, 105.1LN, 105.1LO, 105.1LP, 105.1LQ, 105.1LR, 105.1LS, 105.1LT, 105.1LU, 105.1LV, 105.1LW, 105.1LX, 105.1LY, 105.1LZ, 105.1MA, 105.1MB, 105.1MC, 105.1MD, 105.1ME, 105.1MF, 105.1MG, 105.1MH, 105.1MI, 105.1MJ, 105.1MK, 105.1ML, 105.1MN, 105.1MO, 105.1MP, 105.1MQ, 105.1MR, 105.1MS, 105.1MT, 105.1MU, 105.1MV, 105.1MW, 105.1MX, 105.1MY, 105.1MZ, 105.1NA, 105.1NB, 105.1NC, 105.1ND, 105.1NE, 105.1NF, 105.1NG, 105.1NH, 105.1NI, 105.1NJ, 105.1NK, 105.1NL, 105.1NM, 105.1NN, 105.1NO, 105.1NP, 105.1NQ, 105.1NR, 105.1NS, 105.1NT, 105.1NU, 105.1NV, 105.1NW, 105.1NX, 105.1NY, 105.1NZ, 105.1OA, 105.1OB, 105.1OC, 105.1OD, 105.1OE, 105.1OF, 105.1OG, 105.1OH, 105.1OI, 105.1OJ, 105.1OK, 105.1OL, 105.1OM, 105.1ON, 105.1OO, 105.1OP, 105.1OQ, 105.1OR, 105.1OS, 105.1OT, 105.1OU, 105.1OV, 105.1OW, 105.1OX, 105.1OY, 105.1OZ, 105.1PA, 105.1PB, 105.1PC, 105.1PD, 105.1PE, 105.1PF, 105.1PG, 105.1PH, 105.1PI, 105.1PJ, 105.1PK, 105.1PL, 105.1PM, 105.1PN, 105.1PO, 105.1PP, 105.1PQ, 105.1PR, 105.1PS, 105.1PT, 105.1PU, 105.1PV, 105.1PW, 105.1PX, 105.1PY, 105.1PZ, 105.1QA, 105.1QB, 105.1QC, 105.1QD, 105.1QE, 105.1QF, 105.1QG, 105.1QH, 105.1QI, 105.1QJ, 105.1QK, 105.1QL, 105.1QM, 105.1QN, 105.1QO, 105.1QP, 105.1QQ, 105.1QR, 105.1QS, 105.1QT, 105.1QU, 105.1QV, 105.1QW, 105.1QX, 105.1QY, 105.1QZ, 105.1RA, 105.1RB, 105.1RC, 105.1RD, 105.1RE, 105.1RF, 105.1RG, 105.1RH, 105.1RI, 105.1RJ, 105.1RK, 105.1RL, 105.1RM, 105.1RN, 105.1RO, 105.1RP, 105.1RQ, 105.1RR, 105.1RS, 105.1RT, 105.1RU, 105.1RV, 105.1RW, 105.1RX, 105.1RY, 105.1RZ, 105.1SA, 105.1SB, 105.1SC, 105.1SD, 105.1SE, 105.1SF, 105.1SG, 105.1SH, 105.1SI, 105.1SJ, 105.1SK, 105.1SL, 105.1SM, 105.1SN, 105.1SO, 105.1SP, 105.1SQ, 105.1SR, 105.1SS, 105.1ST, 105.1SU, 105.1SV, 105.1SW, 105.1SX, 105.1SY, 105.1SZ, 105.1TA, 105.1TB, 105.1TC, 105.1TD, 105.1TE, 105.1TF, 105.1TG, 105.1TH, 105.1TI, 105.1TJ, 105.1TK, 105.1TL, 105.1TM, 105.1TN, 105.1TO, 105.1TP, 105.1TQ, 105.1TR, 105.1TS, 105.1TU, 105.1TV, 105.1TW, 105.1TX, 105.1TY, 105.1TZ, 105.1UA, 105.1UB, 105.1UC, 105.1UD, 105.1UE, 105.1UF, 105.1UG, 105.1UH, 105.1UI, 105.1UJ, 105.1UK, 105.1UL, 105.1UM, 105.1UN, 105.1UO, 105.1UP, 105.1UQ, 105.1UR, 105.1US, 105.1UT, 105.1UU, 105.1UV, 105.1UW, 105.1UX, 105.1UY, 105.1UZ, 105.1VA, 105.1VB, 105.1VC, 105.1VD, 105.1VE, 105.1VF, 105.1VG, 105.1VH, 105.1VI, 105.1VJ, 105.1VK, 105.1VL, 105.1VM, 105.1VN, 105.1VO, 105.1VP, 105.1VQ, 105.1VR, 105.1VS, 105.1VT, 105.1VU, 105.1VV, 105.1VW, 105.1VX, 105.1VY, 105.1VZ, 105.1WA, 105.1WB, 105.1WC, 105.1WD, 105.1WE, 105.1WF, 105.1WG, 105.1WH, 105.1WI, 105.1WJ, 105.1WK, 105.1WL, 105.1WM, 105.1WN, 105.1WO, 105.1WP, 105.1WQ, 105.1WR, 105.1WS, 105.1WT, 105.1WU, 105.1WV, 105.1WW, 105.1WX, 105.1WY, 105.1WZ, 105.1XA, 105.1XB, 105.1XC, 105.1XD, 105.1XE, 105.1XF, 105.1XG, 105.1XH, 105.1XI, 105.1XJ, 105.1XK, 105.1XL, 105.1XM, 105.1XN, 105.1XO, 105.1XP, 105.1XQ, 105.1XR, 105.1XS, 105.1XT, 105.1XU, 105.1XV, 105.1XW, 105.1XX, 105.1XY, 105.1XZ, 105.1YA, 105.1YB, 105.1YC, 105.1YD, 105.1YE, 105.1YF, 105.1YG, 105.1YH, 105.1YI, 105.1YJ, 105.1YK, 105.1YL, 105.1YM, 105.1YN, 105.1YO, 105.1YP, 105.1YQ, 105.1YR, 105.1YS, 105.1YT, 105.1YU, 105.1YV, 105.1YW, 105.1YX, 105.1YY, 105.1YZ, 105.1ZA, 105.1ZB, 105.1ZC, 105.1ZD, 105.1ZE, 105.1ZF, 105.1ZG, 105.1ZH, 105.1ZI, 105.1ZJ, 105.1ZK, 105.1ZL, 105.1ZM, 105.1ZN, 105.1ZO, 105.1ZP, 105.1ZQ, 105.1ZR, 105.1ZS, 105.1ZT, 105.1ZU, 105.1ZV, 105.1ZW, 105.1ZX, 105.1ZY, 105.1ZZ	entire	length	
Total Number	Dates Allowed	Beginning Mile Post	Ending Mile Post
1041, 1042, 1043, 1044, 1045, 1101, 1102, 1103, 1104, 1105, 1106, 1107, 1108, 1109, 1110, 1111, 1112, 1113, 1114, 1115, 1116, 1117, 1118, 1119, 1120, 1121, 1122, 1123, 1124, 1125, 1126, 1127, 1128, 1129, 1130, 1131, 1132, 1133, 1134, 1135, 1136, 1137, 1138, 1139, 1140, 1141, 1142, 1143, 1144, 1145, 1146, 1147, 1148, 1149, 1150, 1151, 1152, 1153, 1154, 1155, 1156, 1157, 1158, 1159, 1160, 1161, 1162, 1163, 1164, 1165, 1166, 1167, 1168, 1169, 1170, 1171, 1172, 1173, 1174, 1175, 1176, 1177, 1178, 1179, 1180, 1181, 1182, 1183, 1184, 1185, 1186, 1187, 1188, 1189, 1190, 1191, 1192, 1193, 1194, 1195, 1196, 1197, 1198, 1199, 1200, 1201, 1202, 1203, 1204, 1205, 1206, 1207, 1208, 1209, 1210, 1211, 1212, 1213, 1214, 1215, 1216, 1217, 1218, 1219, 1220, 1221, 1222, 1223, 1224, 1225, 1226, 1227, 1228, 1229, 1230, 1231, 1232, 1233, 1234, 1235, 1236, 1237, 1238, 1239, 1240, 1241, 1242, 1243, 1244, 1245, 1246, 1247, 1248, 1249, 1250, 1251, 1252, 1253,	05/15-12/15	entire	length
1201, 1202, 1203, 1204, 1205, 1206, 1207, 1110, 1111, 1112, 1113, 1114, 1115, 1116, 1117	8/15-12/15	entire	length