



**UNITED STATES DEPARTMENT OF AGRICULTURE  
FOREST SERVICE  
SOUTHWESTERN REGION  
REGIONAL OCCUPANCY AND USE RESTRICTIONS**

**PROHIBITIONS:**

Pursuant to 16 U.S.C. § 551 and 36 C.F.R. § 261.50(a), the following acts are prohibited in the areas described in this Order and depicted in the attached list and Maps ("Restricted Areas"), hereby incorporated into this Order as Exhibits A, B, and C, within the Southwestern Region National Forests and National Grasslands in the states of New Mexico, Arizona, Texas, and Oklahoma.

1. Entering or using a developed recreation site or portion thereof. **36 C.F.R. § 261.58(b)**

**DEFINITIONS:**

"Developed recreation site" means an area which has been improved or developed for recreation, as defined in 36 C.F.R. § 261.2.

**EXEMPTIONS:**

Pursuant to 36 C.F.R. § 261.50(e), the following persons are exempt from this Order:

1. Persons with a written Forest Service authorization specifically exempting them from the effect of this Order.
2. Any Federal, State, or local officer, or member of an organized rescue or fire fighting force in the performance of an official duty.

**RESTRICTED AREAS:**

See Attachment A for complete list of closed developed recreation sites.

**PURPOSE:**

The purpose of this Order, which reflects federal and state guidance to limit the spread of COVID-19, is to protect public health and safety.

**IMPLEMENTATION:**

1. This Order will be effective on March 24<sup>th</sup>, 2020 at 6:00pm and shall remain in effect until June 30, 2020, or until rescinded, whichever occurs first.
2. Any violation of this prohibition is punishable as a Class B misdemeanor by a fine of not more than \$5,000 for individuals and \$10,000 for organizations, or by imprisonment for not more than six (6) months, or both (*see* 16 U.S.C. § 551, 18 U.S.C. § 3571(b)(6), 18 U.S.C. § 3581(b)(7)).
3. A complete list of the Restricted Areas, by name, is attached and made a part of this Order as Exhibit A. Maps identifying the Restricted Areas are attached and made a part of this Order as Exhibits B and C.
4. This Order supersedes, rescinds, and replaces any previous orders prohibiting the same acts covered by this Order.
5. Further information regarding this Order may be obtained at the Southwestern Region Regional Office located in Albuquerque, New Mexico, telephone number 505-842-3292, and at the following website:

USDA Forest Service Southwestern Region website:  
<https://www.fs.usda.gov/main/r3/home>

Done at Albuquerque, New Mexico this 24 day of March, 2020.



Elaine Kohrman  
Regional Forester (Acting)  
Southwestern Region

**Restricted Areas - Closed Developed Recreation Sites, Southwestern  
Region:**

**Apache-Sitgreaves National Forests**

**Black Mesa Campgrounds**

Canyon Point Campground  
Aspen Campground  
Black Canyon Rim Campground  
Gentry Campground  
Rim Campground  
Mogollon Campground  
Crook Group Campground  
Woods Canyon Lake Group Campground  
Spillway Campground  
Spillway Group Campground  
Sinkhole Campground  
Chevelon Lake Campground  
Chevelon Crossing Campground

**Clifton Campgrounds**

Blackjack Campground  
Coal Creek Campground  
Granville Campground  
Strayhorse Campground  
Honeymoon Campground  
Upper Juan Miller  
Lower Juan Miller

**Lakeside Campgrounds**

Scott Reservoir Campground  
Lewis Canyon Group Campground  
Los Burros Campground  
Fool Hollow Campground

**Springerville Campgrounds:**

Rainbow Campground  
Grayling Campground  
Brookchar Campground  
Cutthroat Campground  
Apache Trout Campground  
Benny Creek Campground  
Winn Campground  
Hoyer Campground

**Prescott National Forest:**

**Bradshaw Ranger District:**

Wekuvde Day Use  
Yavapai  
Groom Creek Horse Camp  
Groom Creek Schoolhouse Group Day Use and Nature Trail  
Lower Wolf Creek Campground  
Spruce Mountain Picnic Site  
Upper Wolf Creek Group Campground  
Eagle Ridge Group Campground  
Hilltop Campground  
Lynx Lake Campground  
Alto Pit OHV Recreation Area (Day Use and Campground)  
Hazlett Hollow  
Horsethief Cabin Rental  
Turney Gulch Group Campground  
White Spar

**Verde Ranger District:**

Hayfield Draw OHV area  
Mingus Mountain Campground  
Playground Group Campground  
Potato Patch Campground  
Powell Springs Campground  
Summit Picnic Area  
Sycamore Cabin Rental  
Vista (ON Mingus Mtn)

**Carson National Forest:**

Agua Piedra  
Amole  
Cabresito Lake  
Capulin  
Cebolla Mesa Camp Ground  
Cimarron  
Columbine  
Comales  
Cuchilla  
Cuchilla De Medio  
Duran Canyon  
El Nogal

Elephant Rock  
Fawn Lakes  
Hodges  
Junebug  
La Junta  
La Sombra  
La Petacas  
Lower Hondo  
McCrystal  
Pot Creek Cultural Site  
Santa Barbara  
Shuree Ponds  
Trampas Canyon  
Twining  
Canjillon Lakes  
Echo Ampitheatre  
El Rito  
Hopewell Lake  
Lagunitas  
Rio de Los Pinos  
Trout Lakes

**Gila National Forest:**

Kingston Campground  
Big Horn Campground  
Catwalk Recreation Area  
Cosmic Campground  
Cottonwood Campground  
Pueblo Park Campground  
Armijo Springs Campground  
El Caso Campground I,II, III,IV,V  
Head of the Ditch Campground  
Juniper Campground  
Pinon Campground  
Valle Tio Vines Horse Camp  
Aeroplane Mesa Campground  
Apache Creek Campground  
Ben Lilly Campground  
Dipping Vat Campground  
Willow Creek Campground  
Cherry Creek Campground  
Gomez Peak Group Picnic Site  
Iron Creek Campground  
Little Walnut Picnic Site  
Little Walnut Group East and West Picnic Site  
McMillian Campground

Railroad Canyon Campground  
Upper Galinas Campground  
Forks Campground  
Grapevine Campground  
Lake Roberts Picnic Site  
Lower Scorpion Campground  
Lower Black Canyon Campground  
Mesa Campground  
Rocky Canyon Campground  
Sapillo Group Campground  
Upper Black Canyon Campground  
Upper Scorpion Campground

**Lincoln National Forest:**

Three Rivers Campground  
Bluff Springs Dispersed Recreation Area  
Lower Karr Campground  
Upper Karry Recreation Area  
James Canyon Campground  
Trestle Recreation Area

**Tonto National Forest:**

**Payson Ranger District**

Christopher Creek Campground and Group Site  
Houston Mesa Campground and Equestrian Sites  
Lower Tonto Creek Campground  
Ponderosa Campground and Group Sites  
Sharp Creek Campground and Group Sites  
Upper Tonto Creek Campground  
Water Wheel Day Use  
First Crossing Day Use  
Second Crossing Day Use  
Third Crossing Day Use  
East Verde Day Use

**Pleasant Valley Ranger District**

Airplane Flat Dispersed Camping Area  
Colcord Ridge Dispersed Camping Area

Haigler Canyon Campground and Day Use  
Upper Canyon Creek Dispersed Camping Area  
Valentine Ridge Campground  
Reynolds Creek Group Campground

**Tonto Basin Ranger District**

Bachelor Cove Shoreline Area  
Bermuda Flat Shoreline Area

Burnt Corral Campground (boat launch, boat launch access and boat launch parking will remain open to provide access)

Cholla Bay Day Shoreline Area

Cholla Campground (boat launch, boat launch access and boat launch parking will remain open to provide lake access)

Frazier Horse Camp

Frazier Group Site

Lower Burnt Corral Shoreline Area

Schoolhouse Campground (boat launch, boat launch access and boat launch parking will remain open to provide lake access)

Three Mile Wash Shoreline Area

Upper Burnt Corral Shoreline Area

Windy Hill Campground except FR 82 to Bobcat boat ramp, Bobcat boat ramp, and associated parking  
Grapevine Group Site, except FR 84 to Grapevine boat ramp, Grapevine boat ramp, and associated parking

Indian Point Campground, (boat launch, boat launch access and boat launch parking will remain open to provide lake access)

Vineyard Picnic Area

Cottonwood Picnic Area

Roosevelt Dam Overlook

Diversion Dam

H-Z Wash

Eucalyptus 1,2,3

Ead's Wash

Rafter Take Out

Orange Peel Day Shoreline Area

**Cave Creek**

Riverside Campground  
Rattlesnake Cove  
Yellow Cliffs  
SB Cove  
Bartlett Flats  
Mesquite Campground  
Horseshoe Campground  
Catfish Point  
CCC Campground  
Needle Rock  
Box Bar  
Sears Kay  
Bronco Trailhead  
Trailhead 4  
Cave Creek Group Campground

**Mesa**

Palo Verde  
Laguna  
Tortilla Campground  
Boulder  
Acacia  
Firstwater Trailhead  
Peralta Trailhead  
Granite Reef  
Coons Bluff  
Phon D. Sutton  
Goldfield  
Sheeps Crossing  
Blue Point  
Pebble Beach  
Water Users  
Saguaro Del Norte  
Butcher Jones  
Pobrecito  
Larry Forbis Group Site

**Globe**

Timber Camp Picnic  
Timber Camp Recreation Area and Group Campgrounds  
Timber Camp Equestrian  
Kellner Group Site  
Jones Water  
Pioneer Pass  
Sulfide del Ray  
Upper Pinal Campground



Lower Pinal Campground  
Ice House Day Use  
Picket Post Trailhead

**Kaibab National Forest:**

**North Kaibab RD:**

LaFevre Overlook

**Tusayan RD:**

Grandview Lookout Tower Day Use Site  
Russel Tank Day Use Site

**Williams RD:**

Oak Hill Snow Play Area  
Kaibab Lake Day Use (boat launch and parking to remain open)  
Dogtown Lake Day Use Site (boat launch and parking to remain open)  
Sycamore Falls Climbing Area and Day Use Site

**Coconino National Forest:**

Red Rock Visitor Center  
Oak Creek Visitor Center  
Honanki Heritage Site  
Palatki Heritage Site  
V-V heritage Site  
Chavez Cross Group Campground  
Clear Creek Group Campground  
Dairy Spring Group Campground  
Elks Group Campground  
Long Valley W.C. Group Campground  
Moqui Group Campground  
O'Leary Group Campground  
Ashurst Lake Campground  
Bonito Campground  
Blue Ridge Campground  
Canyon Vista Campground  
Cave Springs Campground  
Clear Creek Campground  
Clints Well Campground  
Dairy Springs Campground  
Double Springs Campground

Kehl Springs Campground  
Knoll Lake Campground  
Lakeview Campground  
Little Elden Springs Horse Camp  
Lockett Meadow Campground  
Manzanita Campground  
Pine Flat Campground  
Pine Grove Campground  
Rock Crossing Campground  
Apache Maid Cabin  
Crescent Moon cabin  
Fernow Cabin  
Kendrick Cabin  
Oak Creek Vista  
Fossil Creek (including Waterfall, Irving, 502/708 jnct., Homestead (upper & lower), Fossil Bridge, Tonto Bench, Mazatzal, and Childs)  
Encinosa Picnic Site  
Bootlegger Picnic Site  
Banjo Bill Picnic Site  
Halfway Picnic Site  
Clints Well Picnic Site and Campground  
Long Valley Day-Use Site  
Lawrence Crossing Dispersed Camping

**Coronado National Forest:**

**Douglas RD**

Rucker Group Site  
The Portal VIC

**Nogales RD**

Bog Spring Group Site  
Calabasas Group Site  
Pena Blanca/White Rock Group Site

**Sierra Vista RD**

Reef Townsite Group Site  
Rock Bluff Group Site  
Carr Canyon Visitor Center

**Safford RD**

Arcadia Group Site

Stockton Group Site  
Twilight Group Site

**Santa Catalina RD**

Shower's Point Group Sites 1-3  
Whitetail Group Sites-1-5  
Bobcat Group Site  
Lizard Rock Group Site  
Cactus Picnic Area  
Molino Basin Group Site  
Palisades VC  
Sabino Canyon VC

**Santa Fe National Forest:**

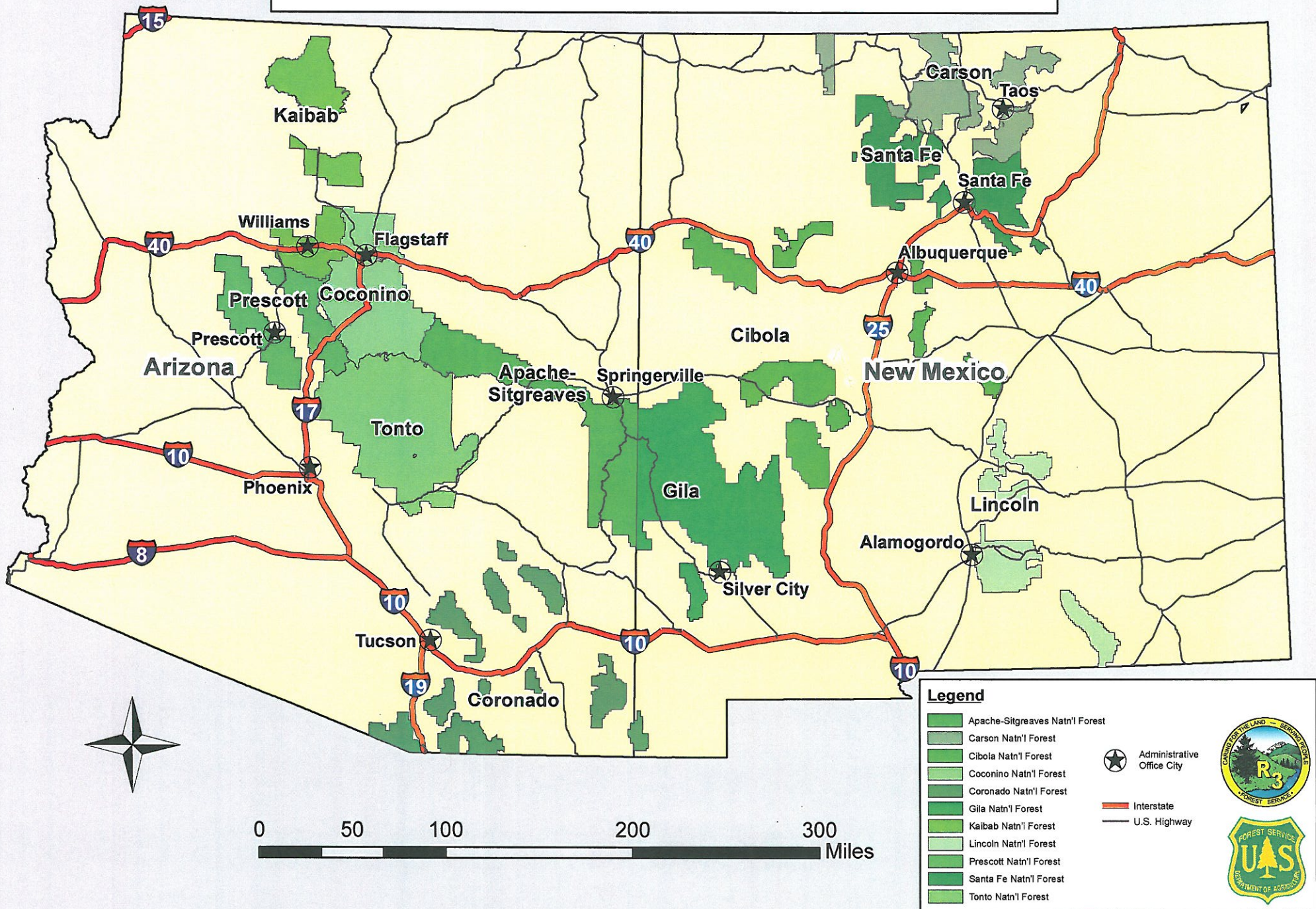
Clear Creek Group Campground  
Paliza Group Campground  
Jemez Falls Group Picnic Site  
Holy Ghost Group Campground  
Jacks Creek Group Campground

**Cibola National Forest:**

No sites closed



# Southwestern Region (R3) National Forests US Forest Service





# Southwestern Region (R3) National Grasslands US Forest Service

