



**UNITED STATES DEPARTMENT OF AGRICULTURE
FOREST SERVICE
SOUTHWESTERN REGION
REGIONAL OCCUPANCY AND USE RESTRICTIONS**

PROHIBITIONS:

Pursuant to 16 U.S.C. § 551 and 36 C.F.R. § 261.50(a), the following acts are prohibited in the areas described in this Order and depicted in the attached list and Maps (“Restricted Areas”), hereby incorporated into this Order as Exhibits A, B, and C, within the Southwestern Region National Forests and National Grasslands in the states of New Mexico, Arizona, Texas, and Oklahoma.

1. Entering or using a developed recreation site or portion thereof. **36 C.F.R. § 261.58(b)**

DEFINITIONS:

“Developed recreation site” means an area which has been improved or developed for recreation, as defined in 36 C.F.R. § 261.2.

EXEMPTIONS:

Pursuant to 36 C.F.R. § 261.50(e), the following persons are exempt from this Order:

1. Persons with a written Forest Service authorization specifically exempting them from the effect of this Order.
2. Any Federal, State, or local officer, or member of an organized rescue or fire fighting force in the performance of an official duty.

RESTRICTED AREAS:

See Attachment A for complete list of closed developed recreation sites.

PURPOSE:

The purpose of this Order, which reflects federal and state guidance to limit the spread of COVID-19, is to protect public health and safety.

IMPLEMENTATION:

1. This Order will be effective on _____, 2020 at _____ and shall remain in effect until June 30, 2020, or until rescinded, whichever occurs first.
2. Any violation of this prohibition is punishable as a Class B misdemeanor by a fine of not more than \$5,000 for individuals and \$10,000 for organizations, or by imprisonment for not more than six (6) months, or both (*see* 16 U.S.C. § 551, 18 U.S.C. § 3571(b)(6), 18 U.S.C. § 3581(b)(7)).
3. A complete list of the Restricted Areas, by name, is attached and made a part of this Order as Exhibit A. Maps identifying the Restricted Areas are attached and made a part of this Order as Exhibits B and C.
4. This Order supersedes, rescinds, and replaces any previous orders prohibiting the same acts covered by this Order.
5. Further information regarding this Order may be obtained at the Southwestern Region Regional Office located in Albuquerque, New Mexico, telephone number 505-842-3292, and at the following website:

USDA Forest Service Southwestern Region website:

<https://www.fs.usda.gov/main/r3/home>

Done at Albuquerque, New Mexico this _____ day of April, 2020.

Elaine Kohrman
Regional Forester (Acting)
Southwestern Region

Restricted Areas - Closed Developed Recreation Sites, Southwestern Region:

Carson National Forest:

Agua Piedra Campground
Amole Group Shelter
Cabresto Lake Campground
Capulin Campground
Canjillon Lakes Campground and Day Use Sites
Cebolla Mesa Campground
Cimarron Campground
Columbine Campground
Comales Campground
Cuchilla Campground
Cuchilla De Medio Campground
Duran Canyon Campground
Elephant Rock Campground
Echo Amphitheatre Campground and Day Use Site
El Rito Campground and Group Shelter
Fawn Lakes Campground
Hodges Campground
Hopewell Lake Campground
Junebug Campground
Lagunitas Campground
La Junta Canyon Campground and Upper La Junta Canyon Campground
La Sombra Campground
La Petacas Campground
Lower Hondo Campground
McCrystal Campground
Rio de Los Pinos Campground
Santa Barbara Campground
Trampas Canyon Campground
Trout Lakes Campground
Twining Campground

Santa Fe National Forest:

Clear Creek Group Campground
Paliza Group Campground
Jemez Falls Group Picnic Site
Holy Ghost Group Campground
Jacks Creek Group Campground
Rio Chama Campground
Coyote Canyon Camping Area
Rio Puerco Camping Area
Clear Creek Campground
Rio De Las Vacas Campground
Clear Creek Campground
Clear Creek Picnic Site
Borrego Mesa Campground
Little Tesuque Picnic Site
Jemez Falls Campground
Paliza Family campground
Redondo Campground
San Antonio Campground
Vista Linda Campground
Paliza Group Campground
Jemez Falls Group Picnic Site
La Cueva Picnic Site
Seven Springs Picnic Site
Battleship Rock Picnic Site
Las Conchas Picnic Site
Spanish Queen Picnic Site
Spence Hot Springs Trailhead
Johnson Mesa Campground
Cowles Campground
El Provenir Campground
EV Long Campground
Field Tract Campground
Links Tract Camping Area
Holy Ghost Group Campground
Jacks Creek Group Campground
Jacks Creek Horse Camp
Baker Flat Picnic Site
Big Pine Picnic Site
Oak Flats Picnic Site
Windy Bridge Picnic Site

San Antonio Hot Springs
Spence Hot Springs
McCauley Warm Springs

Cibola National Forest:

No sites closed at this time

Gila National Forest:

Kingston Campground
Big Horn Campground
Whitewater Picnic Area
Cosmic Campground
Cottonwood Campground
Pueblo Park Campground
Armijo Springs Campground
El Caso Campground I,II, III,IV,V
Head of the Ditch Campground
Juniper Campground
Pinon Campground
Valle Tio Vincas Horse Camp
Aeroplane Mesa Campground
Apache Creek Campground
Ben Lilly Campground
Dipping Vat Campground
Willow Creek Campground
Cherry Creek Campground
Gomez Peak Group Picnic Site
Iron Creek Campground
Little Walnut Picnic Site
Little Walnut Group East and West Picnic Site
McMillian Campground
Railroad Canyon Campground
Upper Galinas Campground
Forks Campground
Grapevine Campground
Lake Roberts Picnic Site
Lower Scorpion Campground

Lower Black Canyon Campground
Mesa Campground
Rocky Canyon Campground
Sapillo Group Campground
Upper Black Canyon Campground
Upper Scorpion Campground
Wolf Hollow Campground

Lincoln National Forest:

Three Rivers Campground
Bluff Springs Dispersed Recreation Area
Lower Karr Campground
Upper Karry Recreation Area
James Canyon Campground
Trestle Recreation Area

Apache-Sitgreaves National Forests

Black Mesa Campgrounds

Canyon Point Campground
Aspen Campground
Black Canyon Rim Campground
Gentry Campground
Rim Campground
Mogollon Campground
Crook Group Campground
Woods Canyon Lake Group Campground
Spillway Campground
Spillway Group Campground
Sinkhole Campground
Chevelon Lake Campground
Chevelon Crossing Campground

Clifton Campgrounds

Blackjack Campground
Coal Creek Campground
Granville Campground
Strayhorse Campground
Honeymoon Campground

Upper Juan Miller

Lower Juan Miller

Lakeside Campgrounds

Scott Reservoir Campground

Lewis Canyon Group Campground

Los Burros Campground

Springerville Campgrounds:

Rainbow Campground

Grayling Campground

Brookchar Campground

Cutthroat Campground

Apache Trout Campground

Benny Creek Campground

Winn Campground

Hoyer Campground

Kaibab National Forest:

North Kaibab RD:

LaFevre Overlook

Tusayan RD:

Grandview Lookout Tower Day Use Site

Russel Tank Day Use Site

Williams RD:

Oak Hill Snow Play Area

Kaibab Lake Day Use (boat launch and parking to remain open)

Dogtown Lake Day Use Site (boat launch and parking to remain open)

Sycamore Falls Climbing Area and Day Use Site

Coconino National Forest:

Red Rock Visitor Center

Oak Creek Visitor Center

Honanki Heritage Site
Palatki Heritage Site
V-V heritage Site
Chavez Cross Group Campground
Clear Creek Group Campground
Dairy Spring Group Campground
Elks Group Campground
Long Valley W.C. Group Campground
Moqui Group Campground
O'Leary Group Campground
Ashurst Lake Campground
Bonito Campground
Blue Ridge Campground
Canyon Vista Campground
Cave Springs Campground
Clear Creek Campground
Clints Well Campground
Dairy Springs Campground
Double Springs Campground
Kehl Springs Campground
Knoll Lake Campground
Lakeview Campground
Little Elden Springs Horse Camp
Lockett Meadow Campground
Manzanita Campground
Pine Flat Campground
Pine Grove Campground
Rock Crossing Campground
Apache Maid Cabin
Crescent Moon cabin
Fernow Cabin
Kendrick Cabin
Oak Creek Vista
Fossil Creek (including Waterfall, Irving, 502/708 jnct., Homestead (upper & lower), Fossil Bridge, Tonto Bench, Mazatzal, and Childs)
Encinosa Picnic Site
Bootlegger Picnic Site
Banjo Bill Picnic Site
Halfway Picnic Site
Clints Well Picnic Site and Campground
Lawrence Crossing Dispersed Camping
Lava River Cave

Grasshopper Point Swimming and Picnic Site
Lockett Meadow Trailhead
Arizona Snowbowl Ski Area
Humphreys Trailhead
Kachina Trailhead

Prescott National Forest:

Bradshaw Ranger District:

Wekuvde Day Use
Yavapai
Groom Creek Horse Camp
Groom Creek Schoolhouse Group Day Use and Nature Trail
Lower Wolf Creek Campground
Spruce Mountain Picnic Site
Upper Wolf Creek Group Campground
Eagle Ridge Group Campground
Hilltop Campground
Lynx Lake Campground
Alto Pit OHV Recreation Area (Day Use and Campground)
Hazlett Hollow
Horsethief Cabin Rental
Turney Gulch Group Campground
White Spar

Verde Ranger District:

Hayfield Draw OHV area
Mingus Mountain Campground
Playground Group Campground
Potato Patch Campground
Powell Springs Campground
Summit Picnic Area
Sycamore Cabin Rental
Vista (ON Mingus Mtn)

Tonto National Forest:

Payson Ranger District

Christopher Creek Campground and Group Site
Houston Mesa Campground and Equestrian Sites
Lower Tonto Creek Campground
Ponderosa Campground and Group Sites
Sharp Creek Campground and Group Sites
Upper Tonto Creek Campground
Water Wheel Day Use
Second Crossing Day Use
Third Crossing Day Use

Pleasant Valley Ranger District

Airplane Flat Dispersed Camping Area
Colcord Ridge Dispersed Camping Area
Haigler Canyon Campground and Day Use
Upper Canyon Creek Dispersed Camping Area
Valentine Ridge Campground
Reynolds Creek Group Campground

Tonto Basin Ranger District

Bachelor Cove Shoreline Area
Bermuda Flat Shoreline Area

Burnt Corral Campground (boat launch, boat launch access and boat launch parking will remain open to provide access)
Cholla Bay Day Shoreline Area
Cholla Campground (boat launch, boat launch access and boat launch parking will remain open to provide lake access)
Frazier Horse Camp
Frazier Group Site
Lower Burnt Corral Shoreline Area
Schoolhouse Campground (boat launch, boat launch access and boat launch parking will remain open to provide lake access)
Three Mile Wash Shoreline Area
Upper Burnt Corral Shoreline Area
Windy Hill Campground except FR 82 to Bobcat boat ramp, Bobcat boat ramp, and associated parking
Grapevine Group Site, except FR 84 to Grapevine boat ramp, Grapevine boat ramp, and associated parking
Indian Point Campground,(boat launch, boat launch access and boat launch parking will remain open to provide lake access)

Vineyard Picnic Area
Cottonwood Picnic Area
Roosevelt Dam Overlook
Diversion Dam
H-Z Wash
Eucalyptus 1,2,3
Ead's Wash
Rafter Take Out
Orange Peel Day Shoreline Area

Cave Creek

Riverside Campground
Rattlesnake Cove
Yellow Cliffs
SB Cove
Bartlett Flats
Mesquite Campground
Horseshoe Campground
Catfish Point
CCC Campground
Needle Rock
Box Bar
Sears Kay Trail, Trailhead, and Parking Area
Cave Creek Group Campground
South Cove at Bartlett Lake

Mesa

Palo Verde
Laguna
Tortilla Campground
Boulder
Acacia
Firstwater Trailhead
Peralta Trailhead
Granite Reef
Coons Bluff
Phon D. Sutton
Goldfield
Sheeps Crossing
Blue Point

Pebble Beach
Water Users
Saguaro Del Norte
Butcher Jones
Pobrecito
Larry Forbis Group Site

Globe

Timber Camp Picnic
Timber Camp Recreation Area and Group Campgrounds
Timber Camp Equestrian
Kellner Group Site
Jones Water
Pioneer Pass
Sulfide del Ray
Upper Pinal Campground
Lower Pinal Campground
Ice House Day Use
Picket Post Trailhead

Sabino Canyon Visitors Center
General Hitchcock Campground
Gordon Hirabayashi Campground
Molino Basin Campground
Peppersauce Campground
Rose Canyon Campground
Spencer Canyon Campground

Coronado National Forest:

Douglas RD

Rucker Group Site
Portal Visitor Information Center
Cypress Park Campground
Herb Martyr Campground
Idlewilde Campground
Rucker Forest Camp Campground
Rustler Park Campground

Stewart Campground
Sunny Flat Campground
Sycamore Campground
Cochise Stronghold Campground

Nogales RD

Bog Spring Campground
Calabasas Group Site
White Rock Campground

Sierra Vista RD

Reef Townsite Campground and Group Site
Rock Bluff Group Site
Carr Canyon Visitor Center
Lakeview Campground
Ramsey Vista Campground

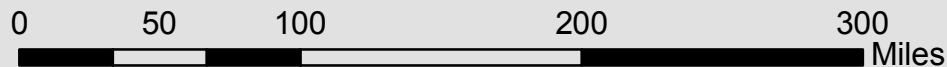
Safford RD

Upper Arcadia Group Site
Stockton Pass Campground
Twilight Group Site
Arcadia Campground
Clark Peak Corrals Campground
Cunningham Campground
Hospital Flat Campground
Upper Hospital Flat Group Site
Noon Creek Campground
Riggs Flat Campground
Round the Mountain Campground
Shannon Campground
Soldier Creek Campground
Stockton Pass Campground
Twilight Group Campground
Snow Flat Group Site
Treasure Park Group Site
Columbine Visitor Center and Group Ramada

Santa Catalina RD

Showers Point Group Site
Whitetail Group Campground
Bobcat Group Site
Lizard Rock Group Site
Cactus Picnic Area Group Ramadas
Molino Basin Campground and Group Site
Palisades Visitors Center
Sabino Canyon Visitor Center
General Hitchcock Campground
Gordon Hirabayashi Campground
Peppersauce Campground
Rose Canyon Campground
Spencer Canyon Campground

Southwestern Region (R3) National Forests US Forest Service

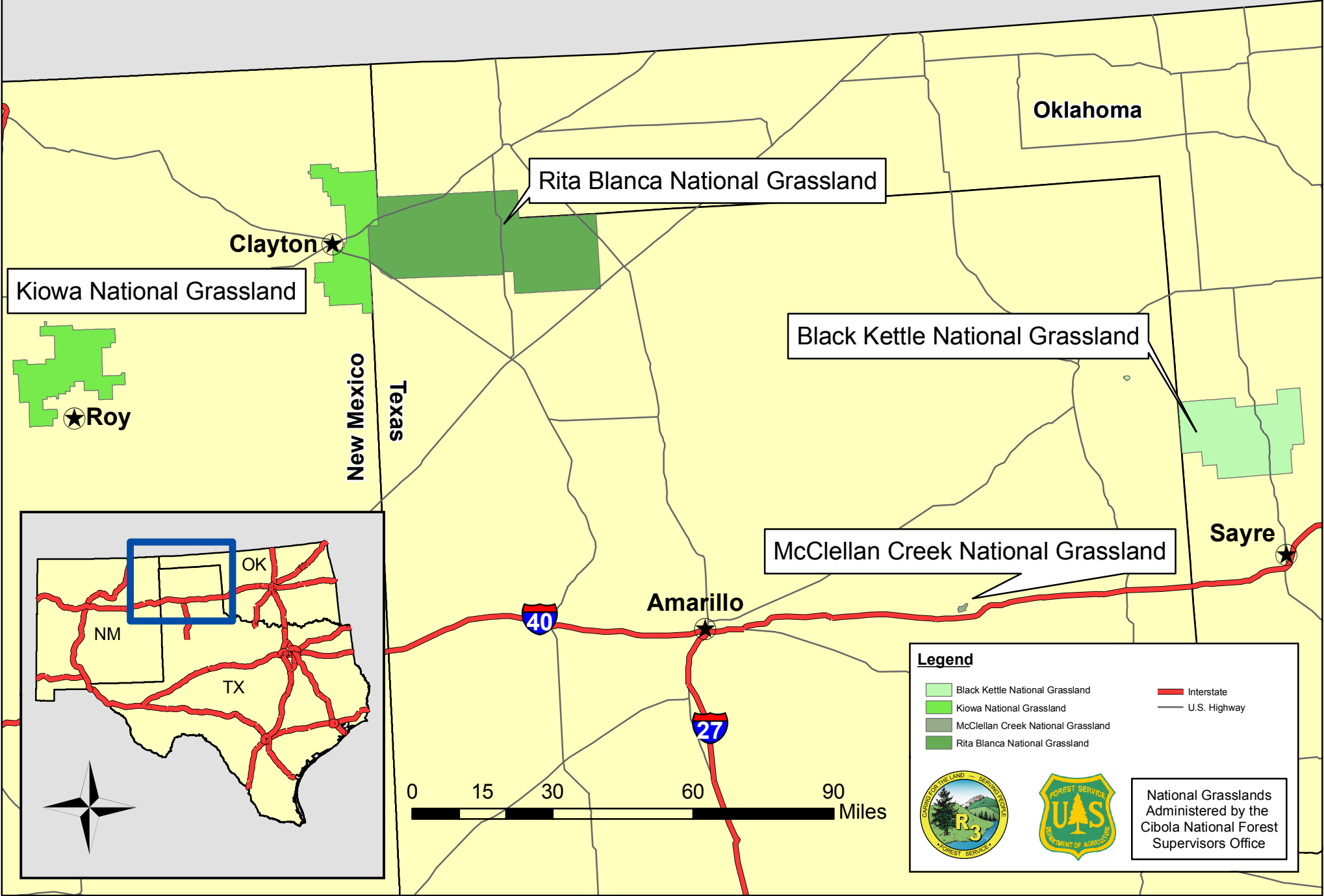


Legend

- Apache-Sitgreaves Natn'l Forest
- Carson Natn'l Forest
- Cibola Natn'l Forest
- Coconino Natn'l Forest
- Coronado Natn'l Forest
- Gila Natn'l Forest
- Kaibab Natn'l Forest
- Lincoln Natn'l Forest
- Prescott Natn'l Forest
- Santa Fe Natn'l Forest
- Tonto Natn'l Forest
- ★ Administrative Office City
- Interstate
- U.S. Highway



Southwestern Region (R3) National Grasslands US Forest Service



Kiowa National Grassland

Rita Blanca National Grassland

Black Kettle National Grassland

McClellan Creek National Grassland

Legend

- Black Kettle National Grassland
- Kiowa National Grassland
- McClellan Creek National Grassland
- Rita Blanca National Grassland
- Interstate
- U.S. Highway



National Grasslands
Administered by the
Cibola National Forest
Supervisors Office

