

**UNITED STATES DEPARTMENT OF AGRICULTURE  
FOREST SERVICE  
BRIDGER-TETON NATIONAL FOREST  
PINEDALE RANGER DISTRICT**

***Occupancy and Use***

**PROHIBITIONS:**

Pursuant to Title 36 CFR 261.50 (a) and (b) the following acts are prohibited within the areas described in this Order, all within the Pinedale Ranger District, Bridger-Teton National Forest. These two areas are closed throughout the calendar year to the following.

1. Camping. 36 CFR 261.58(e)
2. Building, maintaining, attending or using a fire, campfire, or stove fire.  
36 CFR 261.52 (a)

**EXEMPTIONS:**

Pursuant to 36 CFR 261.50 (e) the following persons are exempt from this Order:

1. Persons with a permit specifically exempting them from the effect of this Order.
2. Any Federal, State, or local officer, or member of an organized rescue or fire fighting force in the performance of an official duty.
3. Fremont Lake campground is excluded from Order.

**AREA DESCRIBED:**

The two areas are described below:

Area 1 - National Forest System lands on the South and East sides of Fremont Lake as described below and shown on the attached map.

Sections 12, 13, 23, 24, T34N, R109W, 6<sup>th</sup> Principal Meridian  
Sections 6, 7, NW ¼ of 5, T34N, R108W, 6<sup>th</sup> Principal Meridian  
Sections 31, W ½ of 32, T35N, R108W, 6<sup>th</sup> Principal Meridian

Area 2 - National Forest System lands in the Half Moon Lake Area as described below and shown on the attached map.

SW ¼ of Section 10, T34N, R108W, 6<sup>th</sup> Principal Meridian, at the end of Forest Service Road #743

NE ¼ of Section 9, T34N, R108W, 6<sup>th</sup> Principal Meridian

The above described areas are within the proclaimed and administrative boundaries of the Pinedale Ranger District, Bridger-Teton National Forest, Sublette County, Wyoming.

**DEFINITIONS:**

*Camping* means the temporary use of National Forest System lands for the purpose of overnight occupancy without a permanently fixed structure.

*Campfire* means a fire, not within any building, mobile home or living accommodation mounted on a motor vehicle, which is used for cooking, personal warmth, lighting, ceremonial, or esthetic purpose. *Fire* includes campfire.

**PURPOSE:**

Area 1 - Fremont Lake serves as the unfiltered municipal drinking water source for the Town of Pinedale, which is authorized to operate a drinking water treatment facility on the National Forest at the south end of Fremont Lake. The primary purpose for Area 1 is to address health and safety issues and to enhance water quality protection measures for the Fremont Lake Municipal Watershed. In addition, the potential for wildfire from escaped campfires is of high concern due to proximity of private homes and resorts.

Area 2 - These sites are intended for day-use only. In addition, the potential for wildfire from escaped campfires is of high concern in proximity to private homes and resorts near these sites.

**IMPLEMENTATION:**

1. This Order will be in effect when signed and shall remain in effect until April 30, 2029 or until rescinded, whichever occurs first.
2. Any violation of this prohibition is punishable by a fine of not more than \$5,000.00 for individuals, and \$10,000.00 for organizations and/or imprisonment for not more than six (6) months. [Title 16 USC 551, Title 18 USC 3571(b)(6), Title 18 USC 3581 (b)(7)].
4. Order supersedes any previous orders prohibiting the same acts covered by this order.

Done at Jackson, Wyoming this 18 day of <sup>October</sup>~~September~~, 2019.



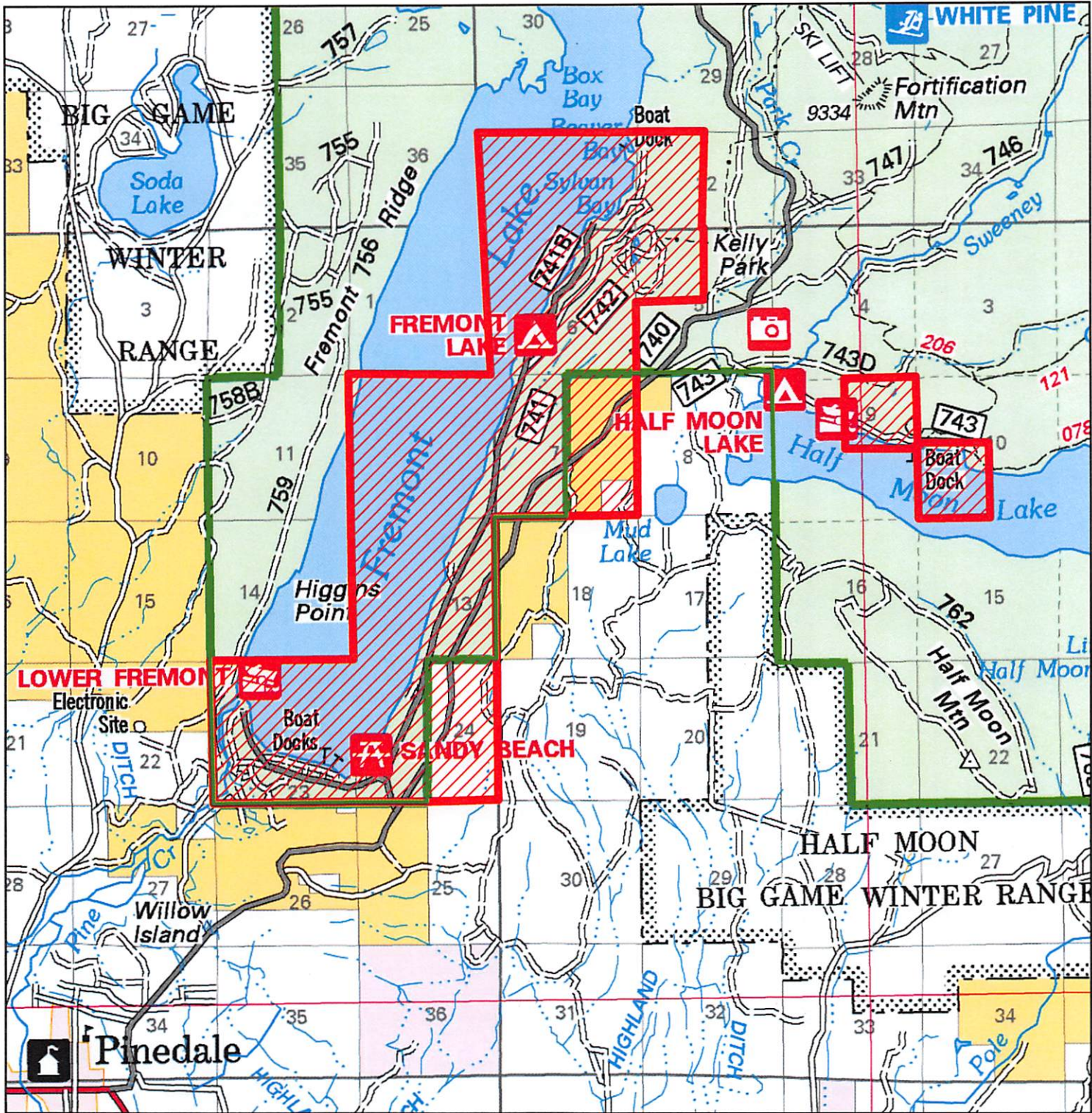
PATRICIA O'CONNOR  
Forest Supervisor  
Bridger-Teton National Forest

Order Number: 04-03-310



# Fremont and Half Moon Lake Campfire and Camping Prohibition Order # 04-03-310

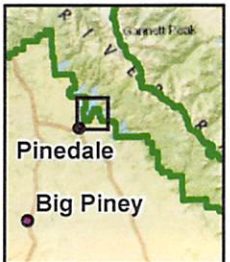
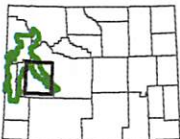
Bridger-Teton National Forest - Pinedale Ranger District



## Legend

- Order # 04-03-310
- Forest Boundary

## WYOMING



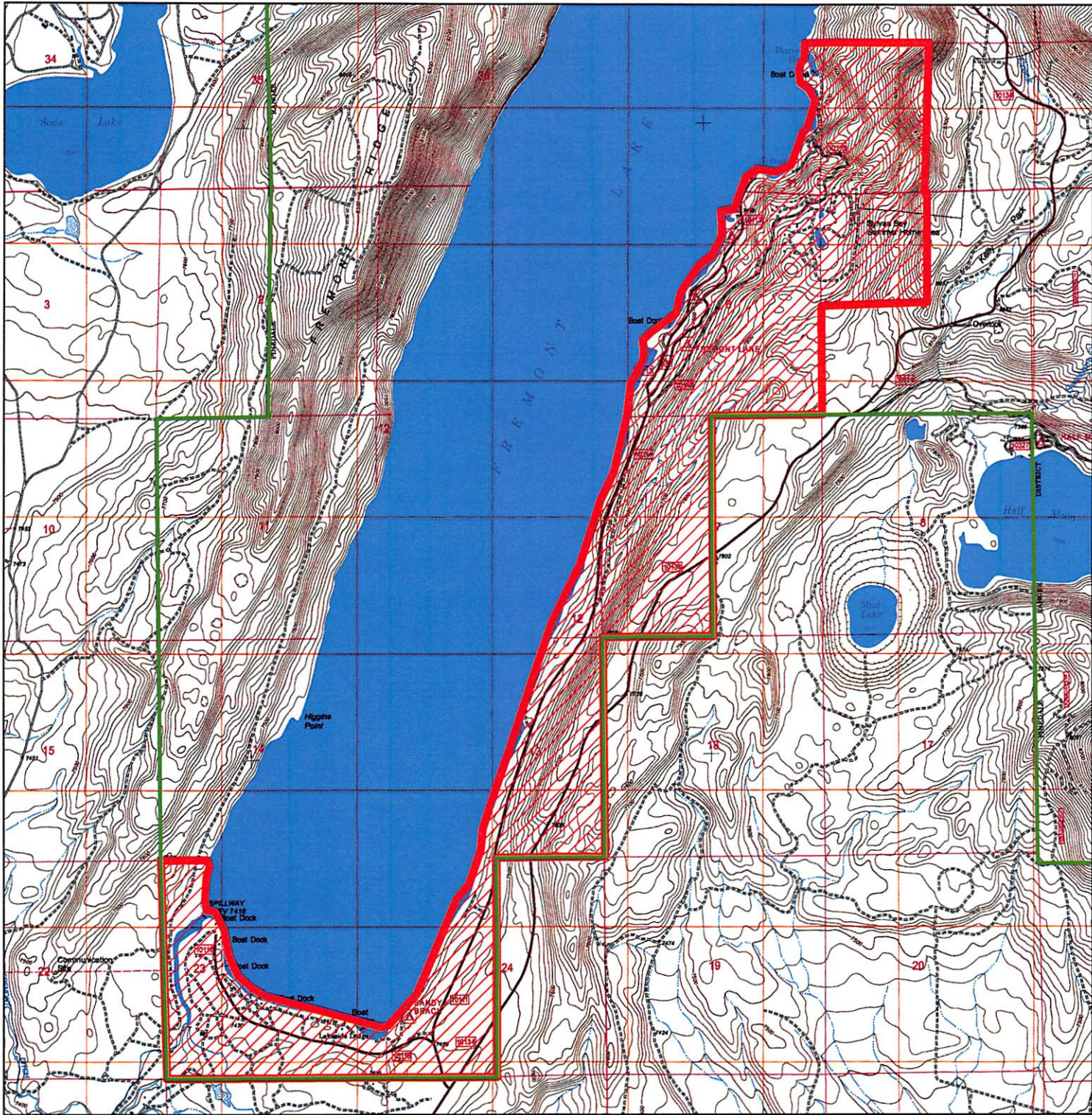
## Disclaimer

The USDA Forest Service makes no warranty, expressed or implied regarding the data displayed on this map, and reserves the right to correct, update, modify, or replace this information without notification.



Fremont Lake Campfire and Camping Prohibition  
Order # 04-03-310

Bridger-Teton National Forest - Pinedale Ranger District



Legend



Order # 04-03-310

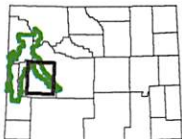


Forest Boundary

0.25 0 0.25 0.5 Miles



WYOMING



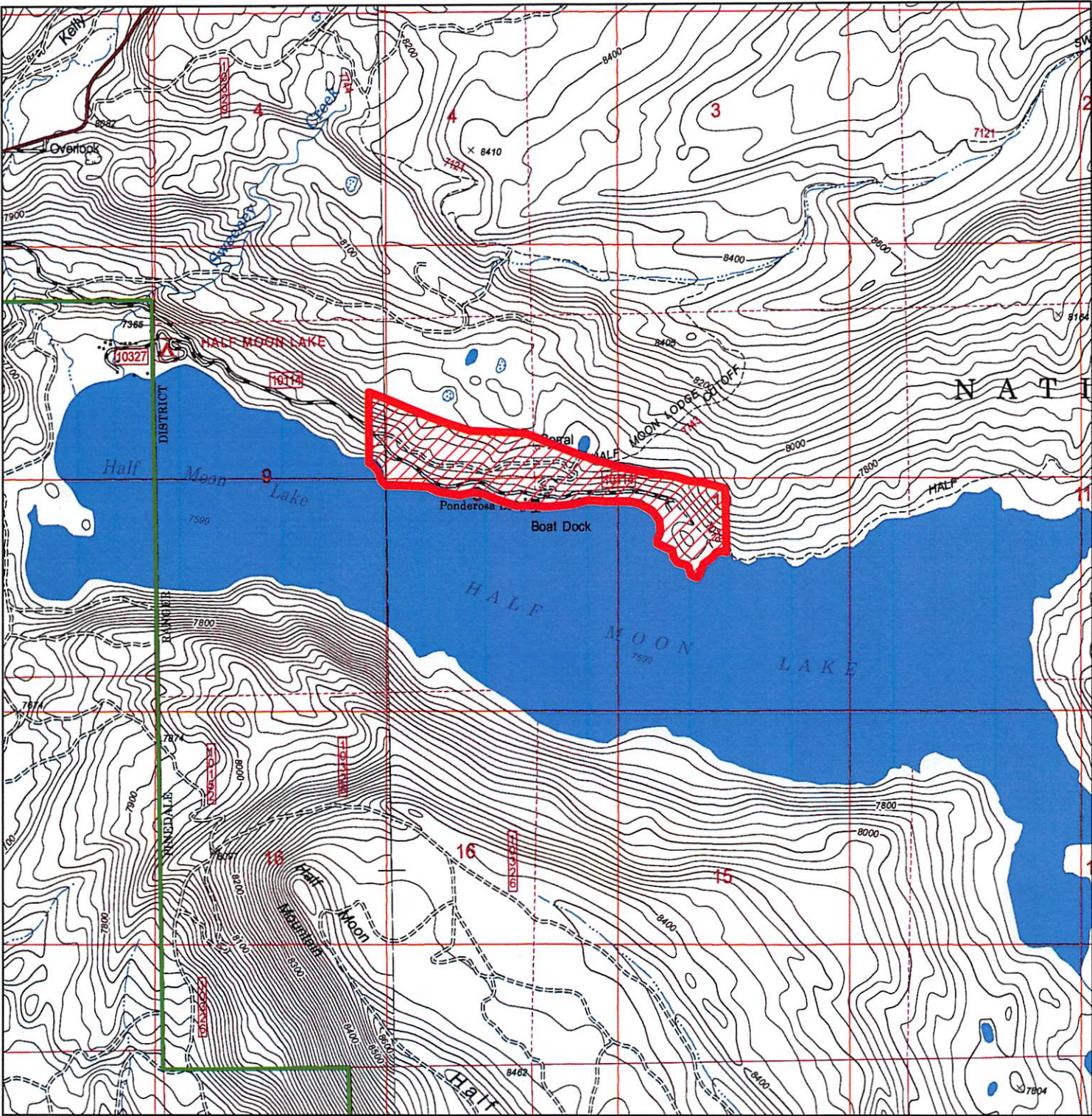
Disclaimer

The USDA Forest Service makes no warranty, expressed or implied regarding the data displayed on this map, and reserves the right to correct, update, modify, or replace this information without notification.



# Half Moon Lake Campfire and Camping Prohibition Order # 04-03-310

Bridger-Teton National Forest - Pinedale Ranger District



### Legend



Order # 04-03-310



Forest Boundary

0.15 0 0.15 0.3 Miles



### WYOMING



### Disclaimer

The USDA Forest Service makes no warranty, expressed or implied regarding the data displayed on this map, and reserves the right to correct, update, modify, or replace this information without notification.