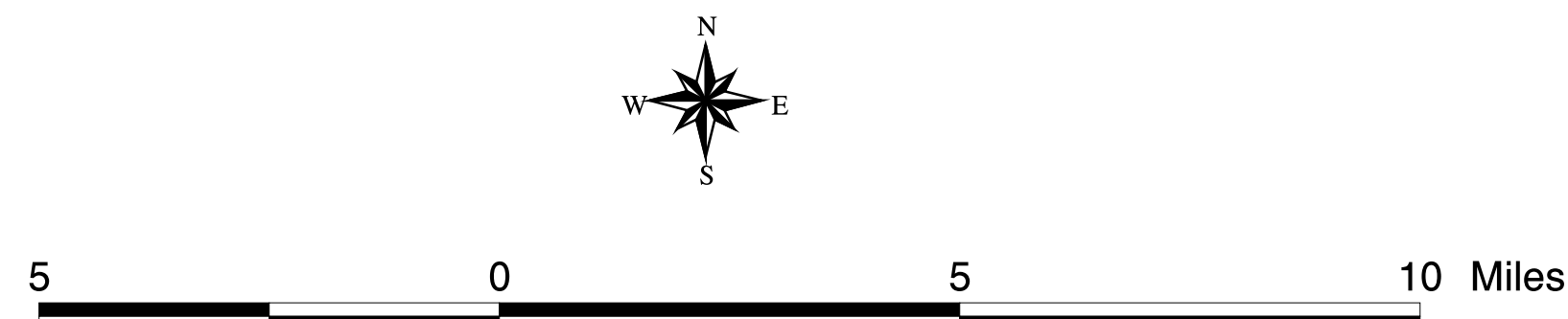
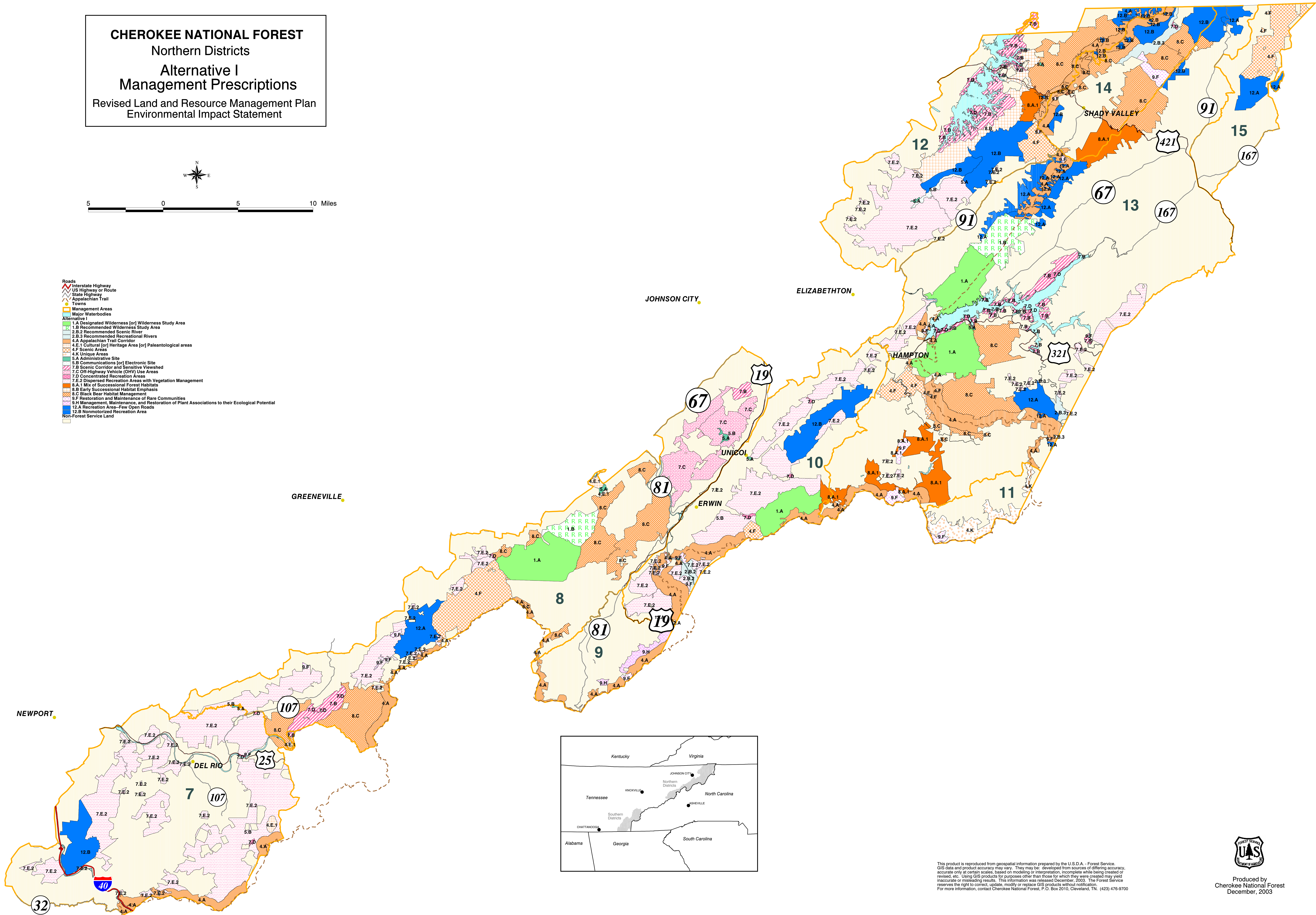


CHEROKEE NATIONAL FOREST
Northern Districts
Alternative I
Management Prescriptions
Revised Land and Resource Management Plan
Environmental Impact Statement



- Roads**
Interstate Highway
US Highway or Route
State Highway
Appalachian Trail
Towns
- Management Areas**
Major Waterbodies
Alternative I
1.A Designated Wilderness [or] Wilderness Study Area
1.B Recommended Wilderness Study Area
2.B.2 Recommended Scenic River
2.B.3 Recommended Recreational Rivers
4.A Appalachian Trail Corridor
4.E.1 Cultural [or] Heritage Area [or] Paleontological areas
4.F Scenic Areas
4.K Unique Areas
5.A Administrative Site
5.B Communications [or] Electronic Site
7.B Scenic Corridor and Sensitive Viewshed
7.C Off-Highway Vehicle (OHV) Use Areas
7.D Concentrated Recreation Areas
7.E.2 Dispersed Recreation Areas with Vegetation Management
8.A.1 Mix of Successional Forest Habitats
8.B Early Successional Habitat Emphasis
8.C Black Bear Habitat Management
9.F Restoration and Maintenance of Rare Communities
9.H Management, Maintenance, and Restoration of Plant Associations to their Ecological Potential
12.A Recreation Area-Few Open Roads
12.B Nonmotorized Recreation Area
Non-Forest Service Land



This product is reproduced from geospatial information prepared by the U.S.D.A. - Forest Service. GIS data and product accuracy may vary. They may be developed from sources of differing accuracy, accurate only at certain scales, based on modeling or interpretation, incomplete while being created or revised, etc. Using GIS products for purposes other than those for which they were created may yield inaccurate or misleading results. This information was released December, 2003. The Forest Service reserves the right to correct, update, modify or replace GIS products without notification. For more information, contact Cherokee National Forest, P.O. Box 2010, Cleveland, TN, (423) 476-9700



Produced by
Cherokee National Forest
December, 2003