

Camping on the East Fork

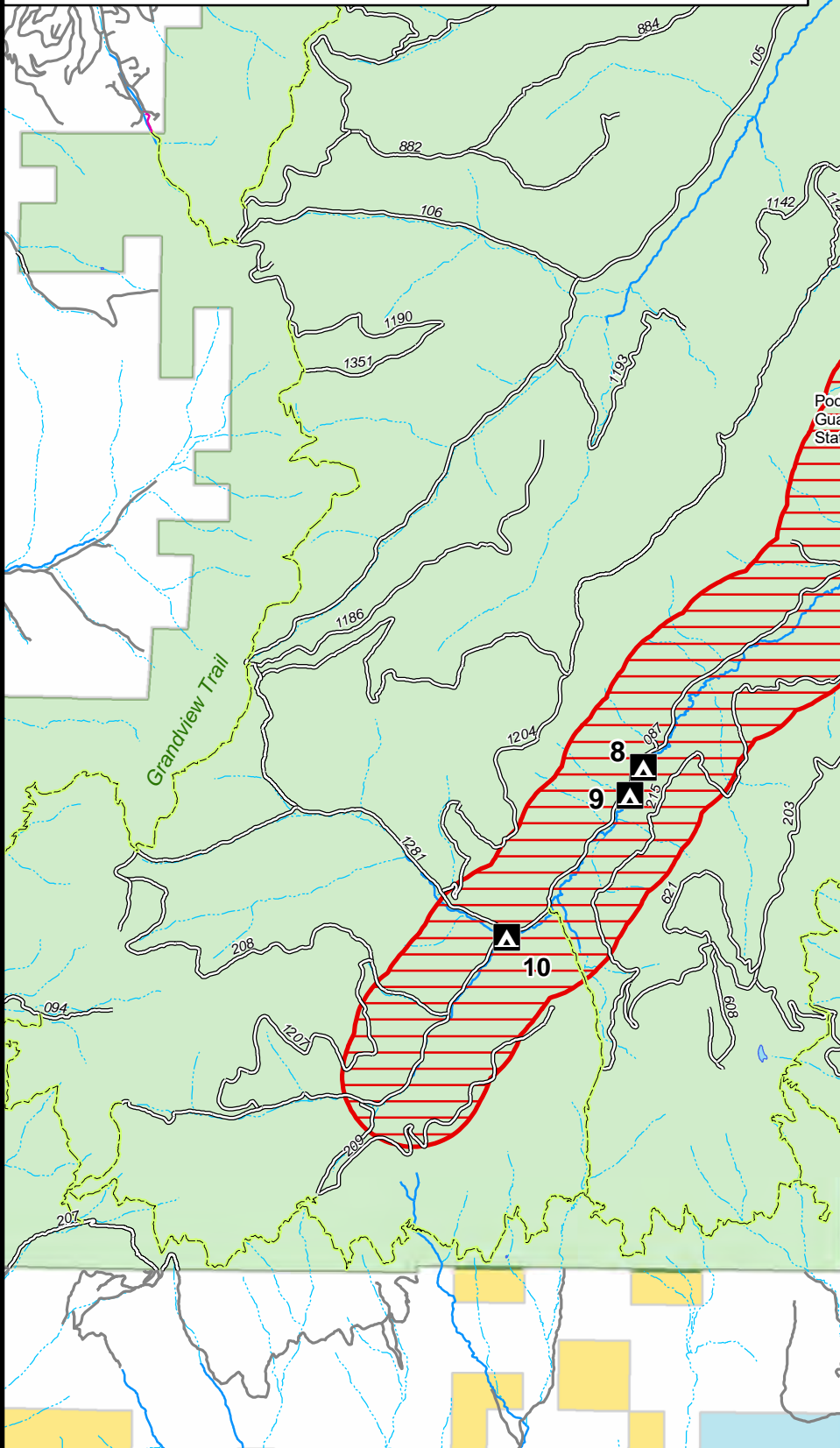
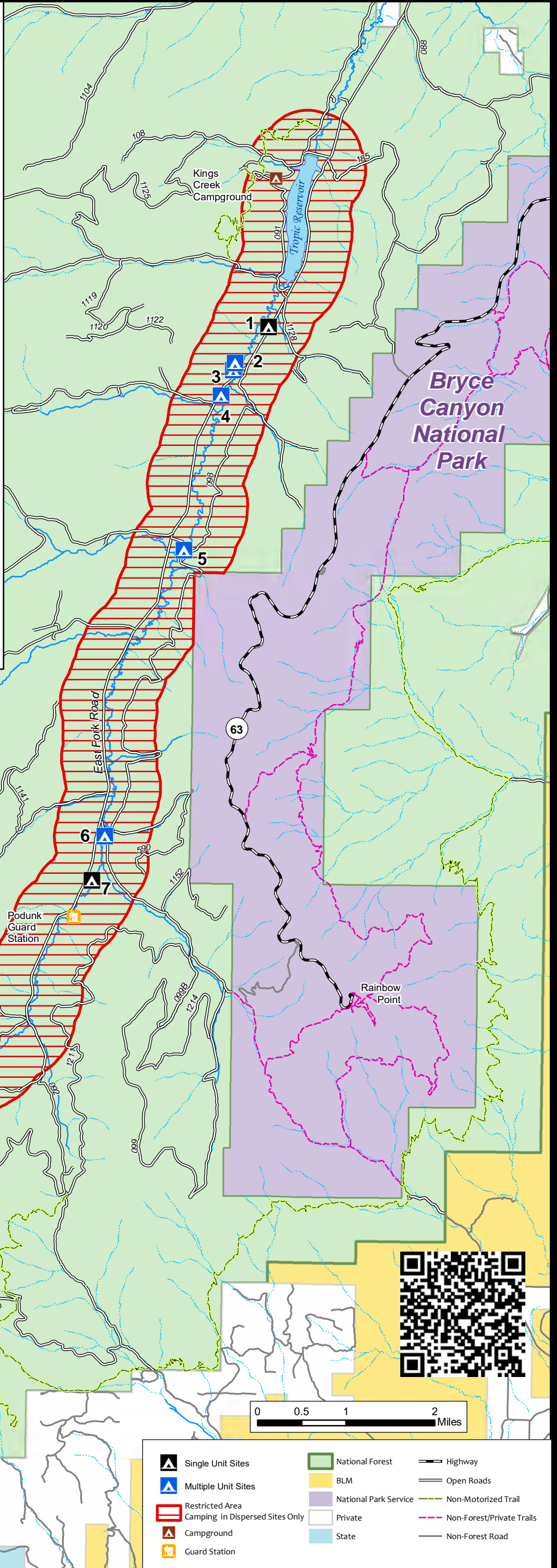
-Camping is allowed only in developed campgrounds or any of the 10 designated dispersed campsites shown on the map.

-Camping is allowed for **16 days** within a 60-day period in the 10 dispersed campsites or outside of the restricted area

-Leaving camping equipment unattended for more than **24 hours** without permission is prohibited.

Closure Order

Two closure orders signed by the Forest Supervisor are in place for the East Fork management area. One limits camping to at least one-half mile from Tropic Reservoir except in King's Creek Campground. The other limits camping and motor vehicle travel to designated sites within one-half mile of the East Fork the Sevier River south of Tropic Reservoir. Beyond one-half mile, camping and motor vehicle travel is open per the Dixie National Forest Travel Map.



Dixie National Forest

