

INFORMATION SOURCES

For more information or assistance, please contact one of the offices below:

Mt. Baker-Snoqualmie National Forest
Supervisor's Office
2930 Wetmore Avenue, Suite 3A
Everett, WA 98201
425-753-6500

Mt. Baker Ranger District
813 State Route 20
Severson, WA 98284
360-856-8700

Darwin Ranger District
1405 Forest Street
Darrington, WA 98241
360-436-1150

SkiKOMAH Ranger District
74920 N. E. Stevens Pass Highway
Stevens Pass, WA 98288
360-677-2414

Snoqualmie Ranger District
902 S. E. North Bend Way, Ste. 1
North Bend, WA 98822
425-885-1421

http://www.fs.usda.gov/landm/mtbaker/mtbaker.html#pubs/7038168106280



Travel and recreate with minimum impact.

Respect the environment and the rights of others.

Educate yourself plan and prepare before you go.

Allow for future use of the outdoors by leaving it better than you found it.

Discover the rewards of responsible recreation.

For more information on Tread Lightly!, go to www.treadlightly.org or call 1-800-968-9900.

The U.S. Department of Agriculture (USDA) prohibits discrimination in all its programs and activities on the basis of race, color, national origin, age, disability, and where applicable, sex, marital status, familial status, parental status, religion, sexual orientation, genetic information, political beliefs, reprisal, or because all or part of an individual's income is derived from any public assistance program. (Not all prohibited bases apply to all programs.) Persons with disabilities who require alternative means for communication of program information (Braille, large print, audiotape, etc.) should contact USDA's TARGET Center at (202) 720-2600 (voice and TDD). To file a complaint of discrimination, write to USDA, Director, Office of Civil Rights, 1400 Independence Avenue, S.W., Washington, D.C. 20250-9410, or call (800) 795-3272 (voice) or (202) 720-6382 (TDD). USDA is an equal opportunity provider and employer.



PURPOSE AND CONTENTS OF THIS MAP

The designations shown on this motor vehicle use map are effective as of the date on the front cover and will remain in effect until superseded by the next year's motor vehicle use map. It is the responsibility of the user to acquire the current MVUM. This map shows the National Forest System roads, National Forest System trails, and the areas on National Forest System lands in the MT. BAKER-SNOQUALMIE NATIONAL FOREST that are designated for motor vehicle use pursuant to 36 Code of Federal Regulations (CFR) 212.51. This map also contains a list of those designated roads, trails, and areas; the types of vehicles that are allowed on each route and in each area; and any seasonal restrictions that apply on those routes and in those areas.

Designation of a road, trail, or area for motor vehicle use by a particular class of vehicle under 36 CFR 212.51 should not be interpreted as encouraging or inviting use or implying that the road, trail or area is passable, actively maintained, or safe for travel. Motor vehicle designations include parking along designated routes and all facilities associated with designated routes where it is safe to do so and when not causing damage to National Forest System resources. Seasonal weather conditions and natural events may render designated routes and trails impassable for extended periods. Designated areas may contain dangerous or impassable terrain. Many designated roads and trails may be passable only by high-clearance vehicles or four-wheel-drive vehicles. Maintenance of designated roads and trails will depend on available resources, and many may receive little maintenance.

This motor vehicle use map identifies those roads, trails, and areas designated for the motor vehicle use under 36 CFR 212.51 for the purpose of enforcing the prohibition at 36 CFR 261.13. This is a limited purpose. The other public roads are shown for information and navigation purposes only and are not subject to designation under the Forest Service travel management regulation.

These designations apply only to National Forest System roads, National Forest System trails, and areas on National Forest System lands.

Legend

- Roads Open to Highway Legal Vehicles
- Trails Open to Motorcycles Only
- Seasonal Designation (See Table)
- Interstate
- Highways, U.S. State
- Other Public Roads
- Short Route Identifier
- Milepost Marker
- FIS Campground
- Picnic Area
- Motorized Trailhead
- Information Site
- Peaks
- Forest or Unit Boundary
- National Forest System Lands
- Non-National Forest System Lands within the National Forest
- Wilderness Areas
- Political Boundary
- Township and Range Lines
- Section Lines
- Lakes and Rivers

Scale: 0 0.5 1 2 Miles

EXPLANATION OF LEGEND ITEMS

Roads Open to Highway Legal Vehicles Only:
These roads are open only to motor vehicles licensed under State law for general operation on all public roads within the State.

Trails Open to Motorcycles Only:
These trails are open only to motorcycles. Sidecars are not permitted.

Seasonal Designation:
This symbol, used in conjunction with one of the other road or trail symbols, indicates that the road or trail is open only during certain portions of the year. Refer to Seasonal and Special Designation Table for further instructions.

Other Public Roads and Trails:
Interstate
Highways, U.S. State
Other Public Roads
Other Public Trails

These symbols are used to show routes the Forest Service does not have jurisdiction over and has not designated for motorized use. These symbols are part of the reference layers showing connections to towns and cities outside the forest boundary.

Short Route Identifier:
This symbol is used for roads that are too short to show a symbol type on the map. The symbol contains the number of the road or trail. Users should refer to the corresponding number in the Short Route Table for designation information.

Milepost Marker:
This symbol is used to display the beginning and ending mileposts of a road that has a change in the designation but not the symbology.

Motorized Trail Access:
This symbol indicates a trailhead for access to a motorized route. Not all motorized routes have trailheads and those that do may range from primitive to developed.

OPERATOR RESPONSIBILITIES

Operating a motor vehicle on National Forest System roads, National Forest System trails, and in areas on National Forest System lands carries a greater responsibility than operating that vehicle in a city or other developed setting. Not only must you know and follow all applicable traffic laws, you need to show concern for the environment as well as other forest users. The misuse of motor vehicles can lead to the temporary or permanent closure of any designated road, trail, or area. As a motor vehicle operator, you are also subject to State traffic law, including State requirements for licensing, registration, and operation of the vehicle in question.

Motor vehicle use, especially off-highway vehicle use, involves inherent risks that may cause property damage, serious injury, and possibly death to participants. Drive cautiously and anticipate rough surfaces and features, such as snow, mud, vegetation, and water crossings common to remote driving conditions. By your participation, you voluntarily assume full responsibility for these dangers, risks, and dangers. Take care at all times to protect yourself and those under your responsibility.

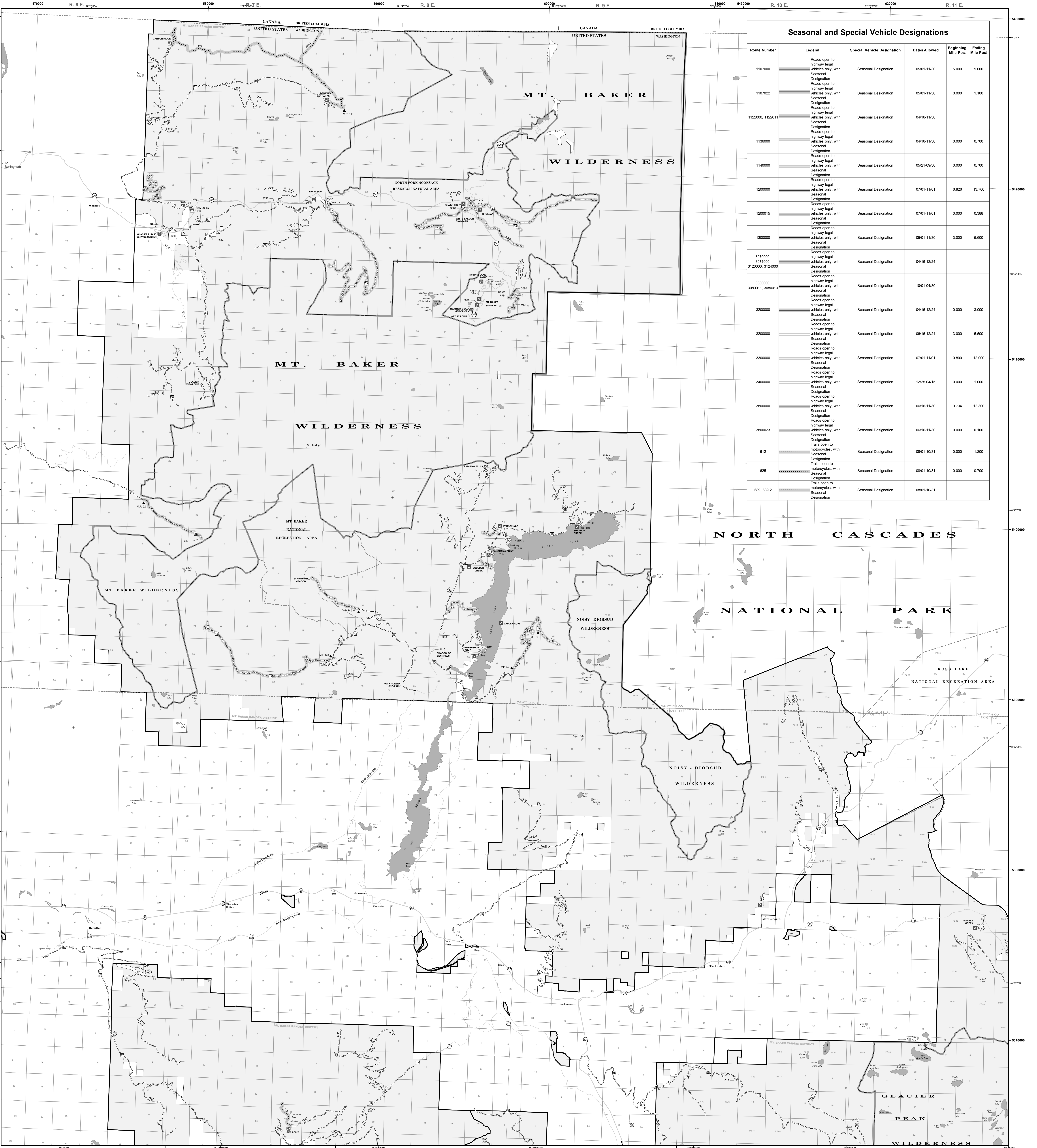
Much of the MT. BAKER-SNOQUALMIE NATIONAL FOREST is remote. Medical assistance may not be readily available. Cellular telephones do not work in many areas of the MT. BAKER-SNOQUALMIE NATIONAL FOREST. Take adequate food, water, first aid supplies, and other equipment appropriate for the conditions and expected weather.

ALWAYS REMEMBER TO RESPECT PRIVATE LAND! PROTECT YOUR PRIVILEGE. STAY ON DESIGNATED AREAS.

Read and understand this map in its entirety. If you have questions, please contact the MT. BAKER-SNOQUALMIE NATIONAL FOREST for clarification.

As a motor vehicle operator on a National Forest System road, trail, or area you must comply with this map, as well as all Federal, State, and local laws and regulations. Compliance with these rules is your responsibility.

Dispersed Camping:
Motor vehicle use off designated roads for the purpose of dispersed camping is permitted for up to 150 feet from the centerline of the road.



Seasonal and Special Vehicle Designations

Route Number	Legend	Special Vehicle Designation	Dates Allowed	Beginning Mile Post	Ending Mile Post
110700	Roads open to highway legal vehicles only with Seasonal Designation	Seasonal Designation	05/01-11/30	5.000	9.000
110702	Roads open to highway legal vehicles only with Seasonal Designation	Seasonal Designation	05/01-11/30	0.000	1.100
112200, 112211	Roads open to highway legal vehicles only with Seasonal Designation	Seasonal Designation	04/16-11/30	0.000	0.700
113800	Roads open to highway legal vehicles only with Seasonal Designation	Seasonal Designation	05/21-09/30	0.000	0.700
114000	Roads open to highway legal vehicles only with Seasonal Designation	Seasonal Designation	05/21-09/30	0.000	0.700
120000	Roads open to highway legal vehicles only with Seasonal Designation	Seasonal Designation	07/01-11/01	6.828	13.700
120015	Roads open to highway legal vehicles only with Seasonal Designation	Seasonal Designation	07/01-11/01	0.000	0.388
130000	Roads open to highway legal vehicles only with Seasonal Designation	Seasonal Designation	05/01-11/30	3.000	5.600
307000, 307100, 312000, 312400	Roads open to highway legal vehicles only with Seasonal Designation	Seasonal Designation	04/16-12/24	0.000	3.000
308000, 308011, 308013	Roads open to highway legal vehicles only with Seasonal Designation	Seasonal Designation	10/01-04/30	0.000	3.000
320000	Roads open to highway legal vehicles only with Seasonal Designation	Seasonal Designation	04/16-12/24	0.000	3.000
320000	Roads open to highway legal vehicles only with Seasonal Designation	Seasonal Designation	06/16-12/24	3.000	5.500
330000	Roads open to highway legal vehicles only with Seasonal Designation	Seasonal Designation	07/01-11/01	0.800	12.900
340000	Roads open to highway legal vehicles only with Seasonal Designation	Seasonal Designation	12/25-04/15	0.000	1.000
380000	Roads open to highway legal vehicles only with Seasonal Designation	Seasonal Designation	06/16-11/30	9.734	12.300
3800023	Roads open to highway legal vehicles only with Seasonal Designation	Seasonal Designation	06/16-11/30	0.000	0.100
612	Trails open to motorcycles with Seasonal Designation	Seasonal Designation	08/01-10/31	0.000	1.200
625	Trails open to motorcycles with Seasonal Designation	Seasonal Designation	08/01-10/31	0.000	0.700
689, 689.2	Trails open to motorcycles with Seasonal Designation	Seasonal Designation	08/01-10/31	0.000	0.700