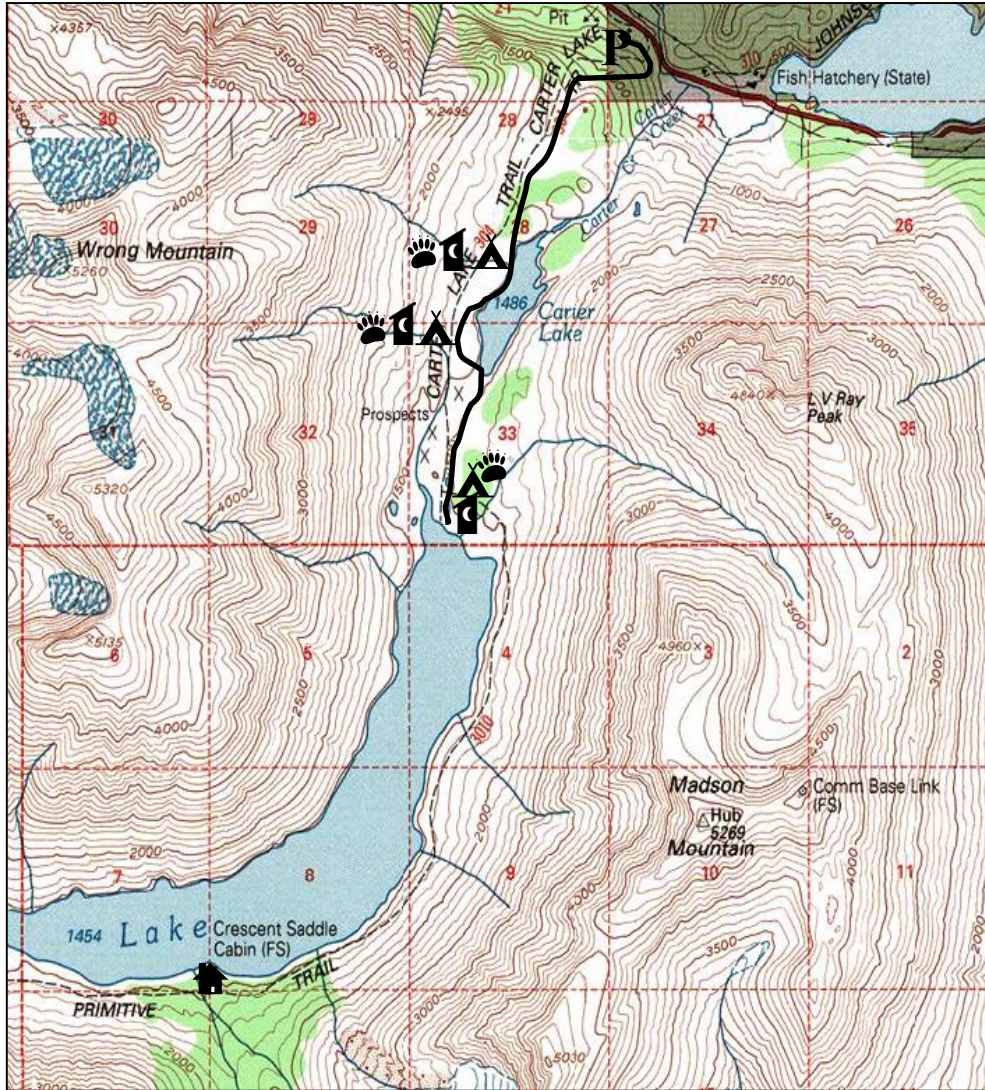




# Carter Lake Trail

Seward Ranger District, Chugach National Forest (907) 288-3178



Map not to scale







## Designated Campsites

- Mile 1.9 N 60° 29' 30.4" W 149° 27' 51.3"
- Mile 2.3 N 60° 29' 17" W 149° 28' 10.1"
- Mile 3.2 N 60° 28' 28.9" W 149° 28' 12.5"

## Cabins

Crescent Saddle Mile 7 N 60° 26' 40" W 149° 30' 14"




## LEGEND

-  Carter Lake Trail
-  Trailhead Parking
-  Forest Service Cabin
-  Designated Campsite
-  Bear Box (food storage)
-  Backcountry Toilet



# Carter Lake Trail

Seward Ranger District, Chugach National Forest  
(907) 288-3178

<b>Recommended Uses</b>	  
<b>Difficulty</b>	Moderate to difficult
<b>Public Use</b>	Moderate
<b>Length (one way)</b>	3.4 miles

<b>USGS Map</b>	Seward B7, C7
<b>Trip Time (one way)</b>	2 hours
<b>Recommended Season</b>	Year round
<b>Elevation Gain</b>	955 feet

## Trail Access

Trailhead is at Mile 34, Seward Highway. *Trail is closed to saddle/pack stock from April 1 to June 30 and motorized vehicles from May 1 to Nov 30.*

## Trail Grade/Condition

An old jeep road. Steep first 1.5 miles, relatively level for remainder. Well maintained, though will be muddy during spring snowmelt and after rains.

## Recreational Opportunities

Trail provides access to sub-alpine and alpine country after 1.5 miles of travel. This is a good trail for day hiking. Multi-day trip with tent camping at designated campsites. Good winter access for alpine activities though the trail may be difficult to travel in the steep sections. For a longer hike it is 17.7 miles from the Carter Lake trailhead to Crescent Creek trailhead via the Crescent Lake Primitive trail, which includes the Crescent Saddle cabin. It is 7 miles from Carter Lake Trailhead to Crescent Saddle Cabin.

During steep first half of trail, hiker passes through hemlock forests with alder and willow. As trail levels out, vegetation changes to the sub-alpine with lower growing shrubs and a multitude of wildflowers. This level terrain offers best camping sites and excellent vistas.

Wildlife includes moose, black and brown bear, mountain goat, ptarmigan, wolverine, coyote and Dall sheep. Hunting for these species is permitted in designated seasons. Stocked rainbow trout in Carter Lake. Grayling fish in Crescent Lake. [Review Alaska Department of Fish and Game \(ADF&G\) hunting and fishing regulations.](#)

## Special Considerations

Summer access may be difficult on the Crescent Lake Primitive trail. Creek crossings at mile 0.3 and 6.3 do not have bridges and may be difficult to cross during high water. The primitive trail around Crescent Lake is not recommended for children, horse and bike due to difficult trail, tall grasses and brush that obscure travel.

Use caution with bear and moose. Giardia (a microscopic parasite that can infect warm-blooded animals and humans) could be present in all open water sources. Filter surface water before drinking. Winter travel may be hazardous due to avalanches, thin lake ice, and white out conditions above tree line. Winter travelers need to be able to evaluate avalanche and over-ice travel hazards. Be prepared for rapid weather changes. Remember to pack out your trash. You can contact a U.S. Forest Service office to receive more detailed information on safety precautions and Leave No Trace outdoor skills and ethics.

## Cabin Reservations

Occupancy of Forest Service cabins is by permit only. Reservations may be made up to 180 days in advance by calling 1-877-444-6777 or via the Internet at [www.recreation.gov](http://www.recreation.gov).