

FOREST ORDER
USDA FOREST SERVICE
Arapaho and Roosevelt National Forests
Sulphur Ranger District

STAGE 3 CLOSURE ORDER

Pursuant to 16 U.S.C. § 551 and 36 C.F.R. § 261.50 (a) and (b), the following acts are prohibited on National Forest System lands within the Arapaho and Roosevelt National Forests that are located in Grand County within the Sulphur Ranger District in the State of Colorado (“Restricted Areas”) and on all National Forest System roads and trails located within the Restricted Areas (“the Restricted Roads and Trails”). The Restricted Area is depicted on the attached map hereby incorporated into this order as Exhibit A.

The purposes of this Order are to: (1) provide for public safety; and (2) prevent interference with firefighting operations.

PROHIBITIONS: This Order prohibits the following:

- 1) Going into or being upon the Restricted Areas depicted on the Map in Exhibit A. 36 C.F.R. § 261.52(e).
- 2) Being on the National Forest System Roads within the Restricted Areas. 36 C.F.R. § 261.54(e).
- 3) Being on the National Forest System Trails within the Restricted Areas. 36 C.F.R. § 261.55(a).

EXEMPTIONS:

Pursuant to 36 C.F.R. § 261.50(e), the following persons are exempt from this order:

- 1) Any federal, state or local officer, or member of an organized rescue or firefighting force, in the performance of an official duty;
- 2) Persons with a Forest Service permit specifically exempting them from the effect of this Order.

This Order supersedes other existing fire restrictions and closure orders in place for the Sulphur Ranger District, including Order ARP-2020-12. When this Stage 3 Order is rescinded the previous Orders will remain in effect until rescinded or expiration.

This Order becomes effective at 12:00pm on October 22, 2020 and remains in effect until November 15, 2020 or until rescinded, whichever event occurs first.

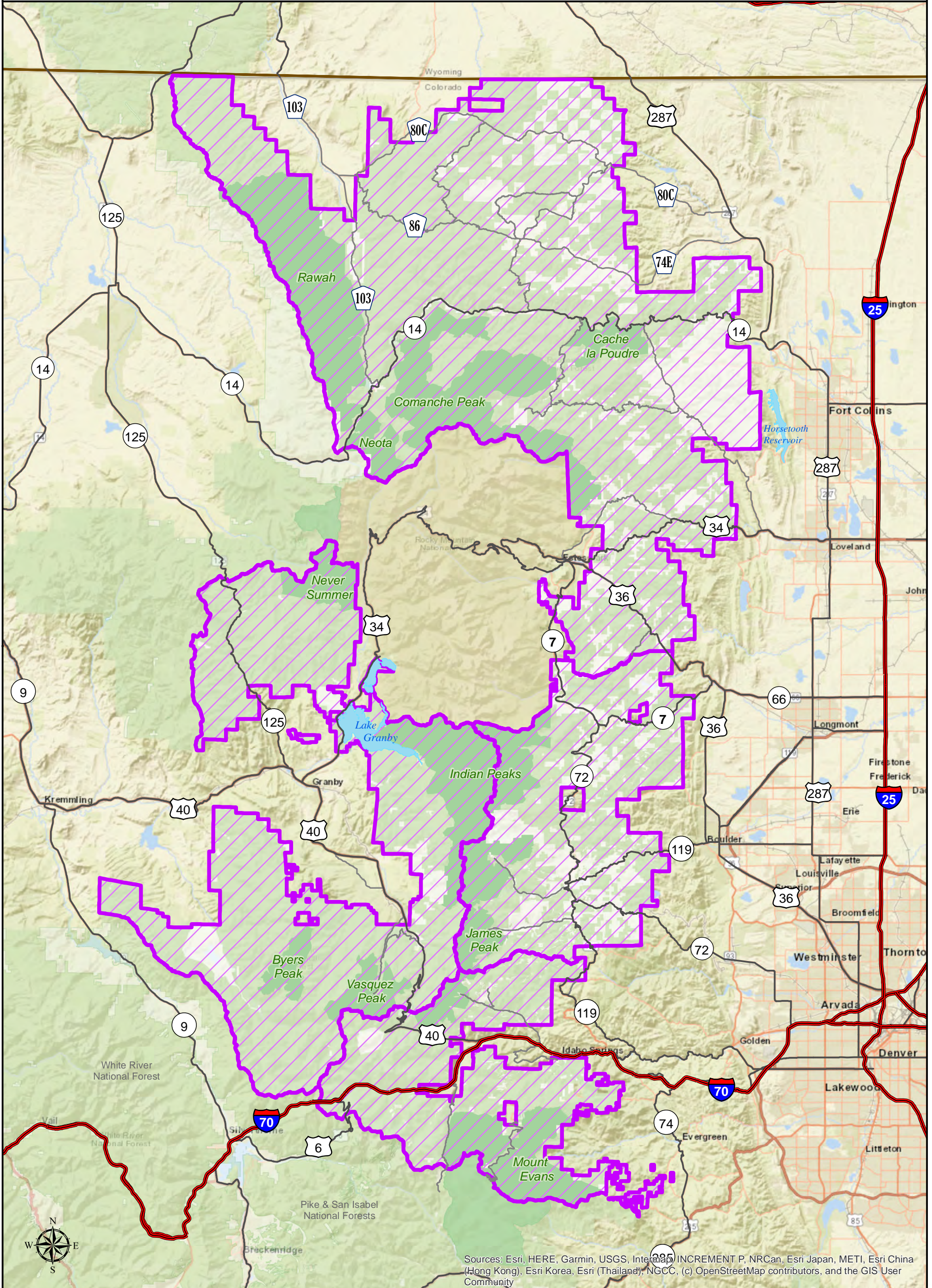
Executed in Fort Collins, Colorado October 22, 2020.

MONTE WILLIAMS
Forest Supervisor
Arapaho and Roosevelt National Forests and
Pawnee National Grassland

A violation of the prohibitions in this Order is punishable as a Class B misdemeanor by a fine of not more than \$5,000 for an individual or \$10,000 for an organization, or imprisonment for not more than 6 months, or both. (16 U.S.C. § 551 and 18 U.S.C §§ 3559 and 3571).



Arapaho and Roosevelt National Forests
 Exhibit A (Applies to National Forest System Lands Only)
 Order No. ARP-2020-14



Sources: Esri, HERE, Garmin, USGS, Intermap, INCREMENT P, NRCan, Esri Japan, METI, Esri China (Hong Kong), Esri Korea, Esri (Thailand), NGCC, (c) OpenStreetMap contributors, and the GIS User Community

Key to Features

- Stage 3 Closure Area
- Interstate
- Major Roads
- ForestRoads_VicinityMap
- National Forest System Land
- Non-Forest System Land
- Wilderness
- Rocky Mountain National Park

Disclaimer:
 This map is for display purposes only and not for navigation. This product is reproduced from geospatial information prepared by the U.S. Department of Agriculture, Forest Service. GIS data and product accuracy may vary. Using GIS products for purposes other than those for which they were created may yield inaccurate or misleading results. The Forest Service reserves the right to correct, update, modify, or replace GIS products based on new inventories, new or revised information, and if necessary in conjunction with other federal, state or local public agencies or the public in general as required by policy or regulation. Previous recipients of the products may not be notified unless required by policy or regulation. For more information, contact: Arapaho/Roosevelt National Forest Supervisors Office: 970-295-6600

